

Ngaaruawaahia, Hopuhopu and Taupiri Structure Plan & Ngaaruawaahia Town Centre Plan



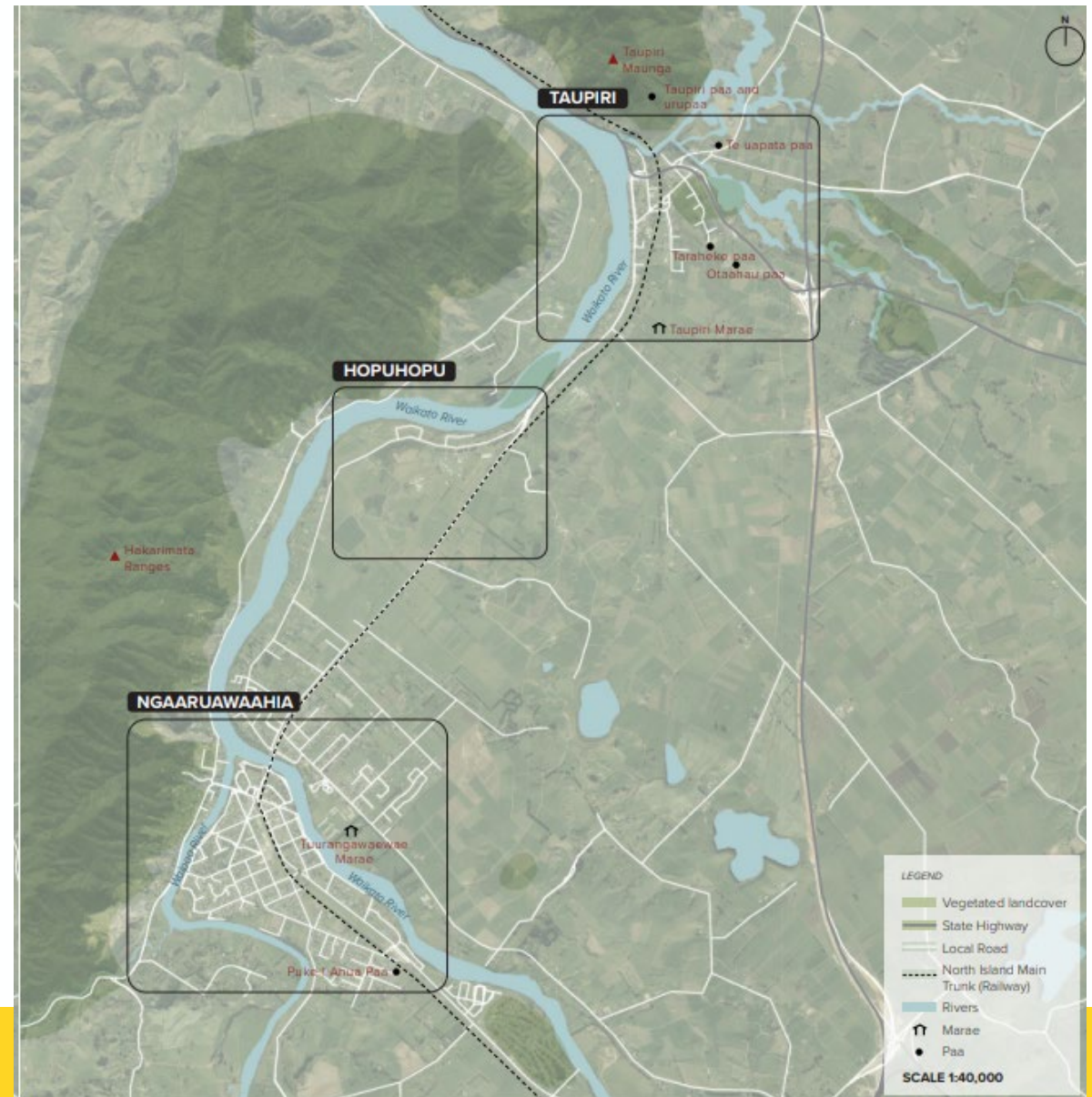
Councillor Workshop - 29 April 2024
Fletcher Bell and Elsa Snyders

Agenda

- Structure Plan/Town Centre Plan
- Way Forward

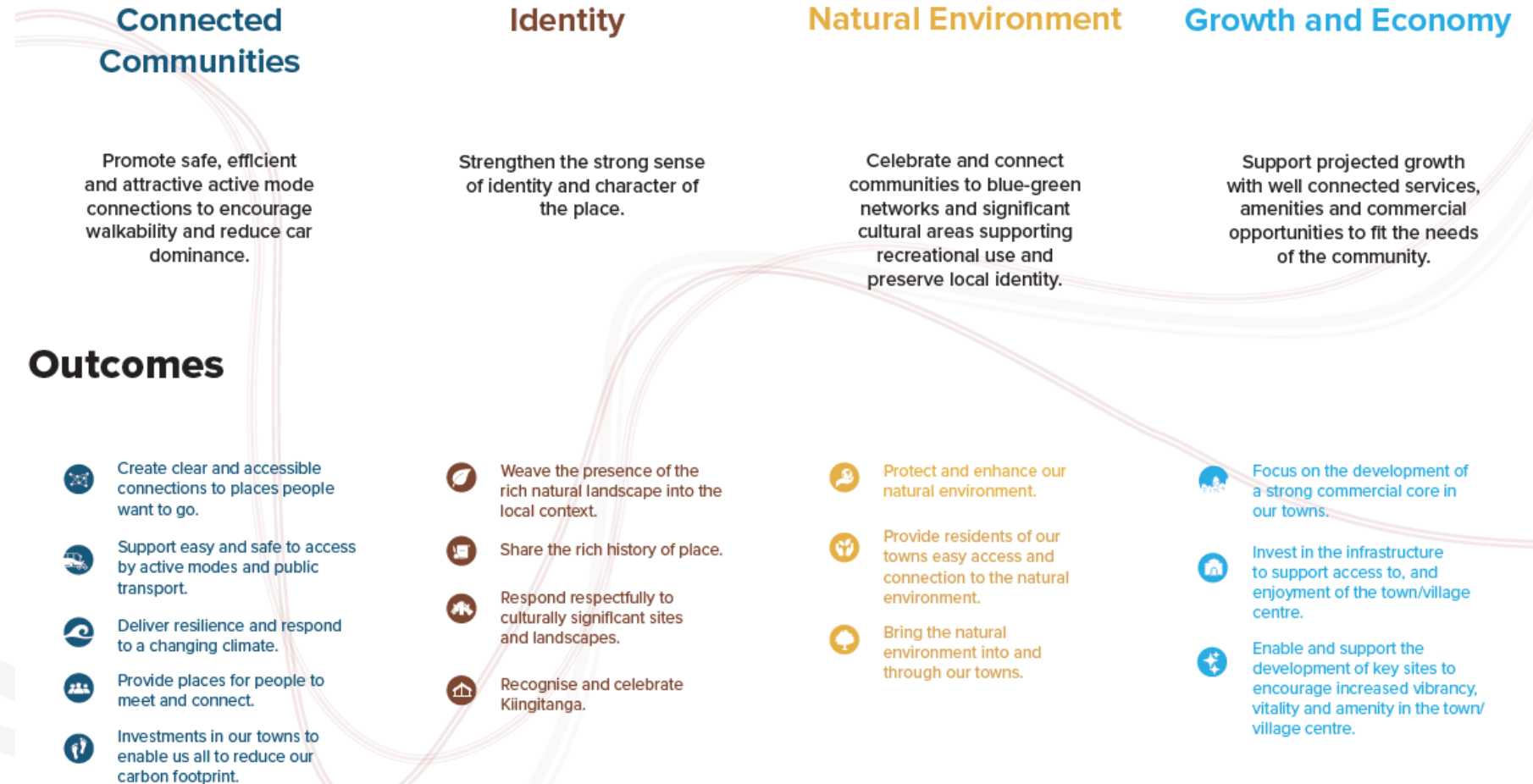
Ngaaruawaahia's current estimated population for 2024 is 8,200 (University of Waikato, 2021) and is projected to experience steady population growth over the next 26 years to around 9,000 by 2050.

Taupiri's current estimated population for 2024 is 700 (University of Waikato, 2021) and is projected to experience steady population growth over the next 26 years to around 1,200 by 2050.



Vision and Strategy

“To create opportunities for the communities of Ngaaruawaahia, Hopuhopu, and Taupiri and their descendants, connected through the landscape, the awa, and collective yet unique histories.”



Statutory and Non-Statutory Consideration

Regional Strategy Frameworks

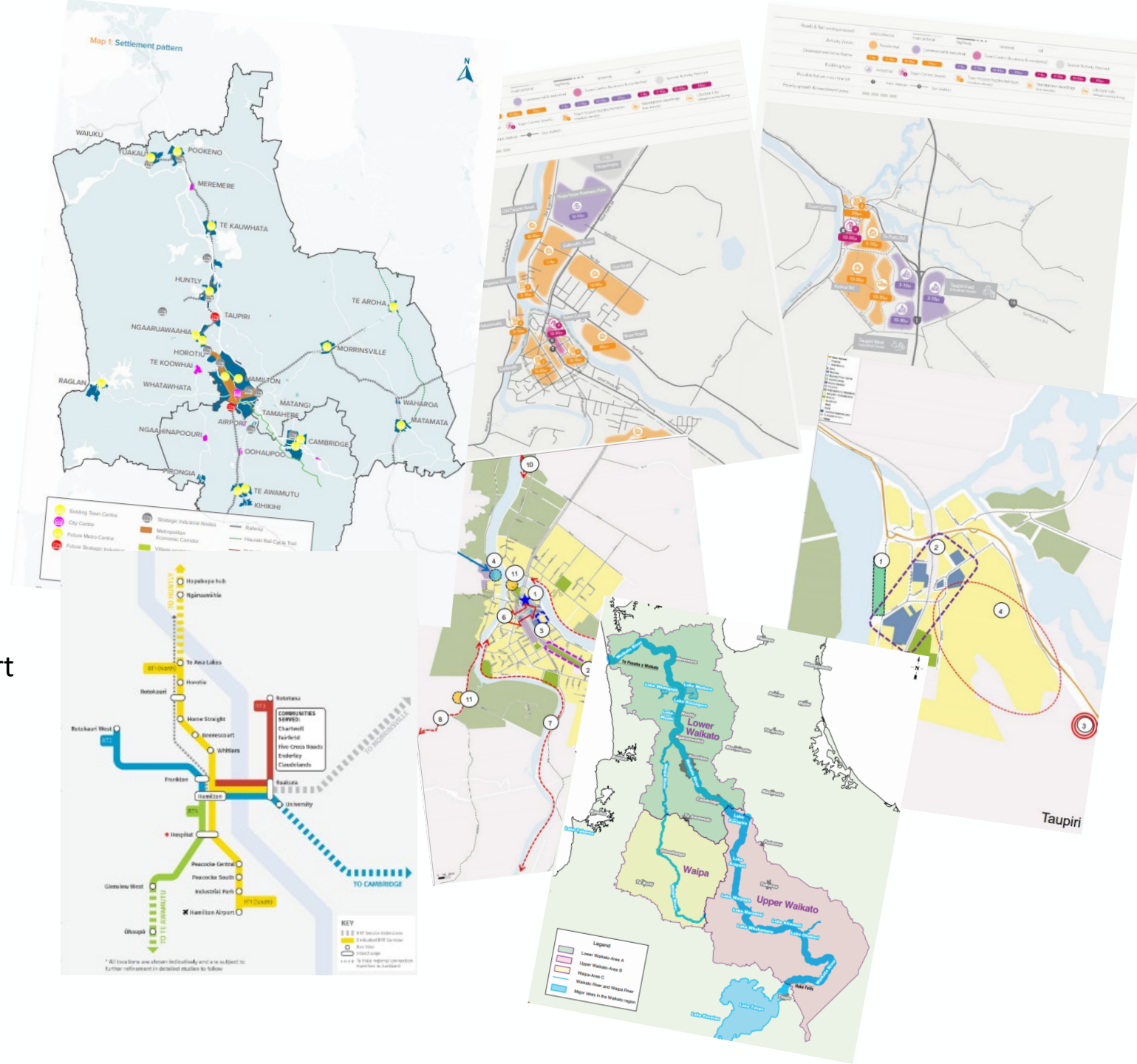
- Future Proof Strategy
- Te Ture Whaimana (Vision and Strategy)

Local Strategy Frameworks

- The Waikato District Council Growth & Economic Development Strategy (Waikato 2070)
- Local Area Blueprint Initiatives

The supporting technical documents include:

- Economics Assessment
- Geotechnical Assessment
- Ground Contamination Assessment
- Landscapes Assessment
- Tangata Whenua Statement and Engagement Report
- Water and Waster Assessment
- Parks and Facilities Assessment
- Crime Prevention Through Environmental Design
- Urban Design Assessment
- Archaeological Assessment
- Heritage Assessment
- Heritage and Notable Trees Addendum Assessment
- Transport Assessment
- Stormwater Assessment



Consultation / Engagement

**Together for tomorrow:
Shaping our Community's Future!**

Join us at the Ngaaruwaahia, Hopuhopu, and Taupiri

Structure Plan and Town Centre Plan Roadshow

Be a part of building liveable, thriving, and connected communities. Come along to one of our interactive drop-in sessions and share your vision and aspirations for the future of the district. **Details below:**

Ngaaruwaahia
Ngaaruwaahia War Memorial Hall
5 Galileo St, Ngaaruwaahia
5:30 - 8:30pm | Tuesday 26 September 2023

Taupiri
Taupiri War Memorial Hall | 16 Greenlane Rd, Taupiri
5:30pm - 8:30pm | Thursday 28 September 2023

Community Open Day at Ngaaruwaahia War Memorial Hall

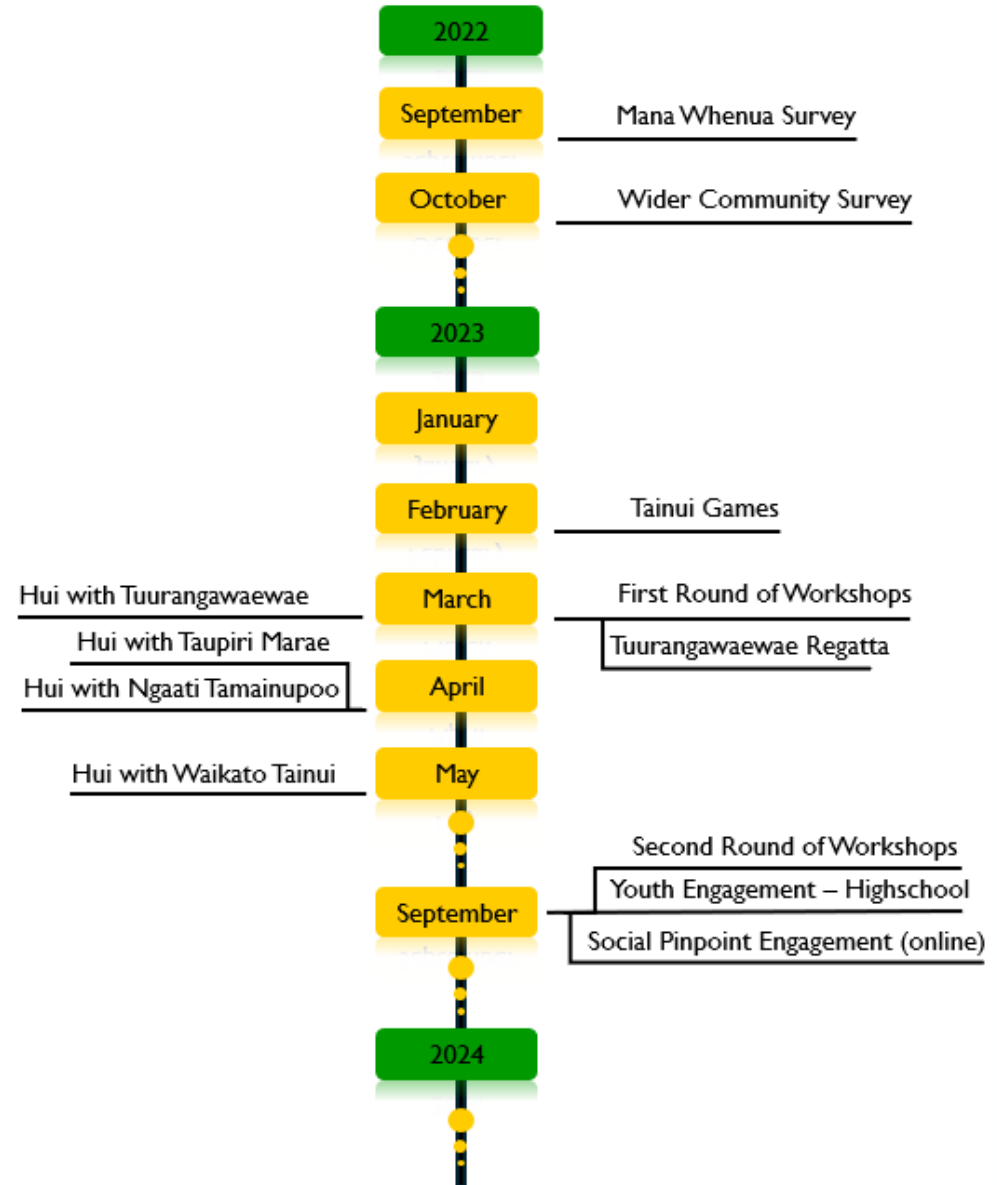
Can't attend in person? No worries! We've got you covered with online feedback or your input is valuable to us, and we want to ensure that everyone's voice is heard.

Visit our website below for more details.

Contact us
0800 492 452
info@wardc.govt.nz
www.waikatodistrict.govt.nz

Independent Engagement (Te Huia Natural Resources)

Council Engagement

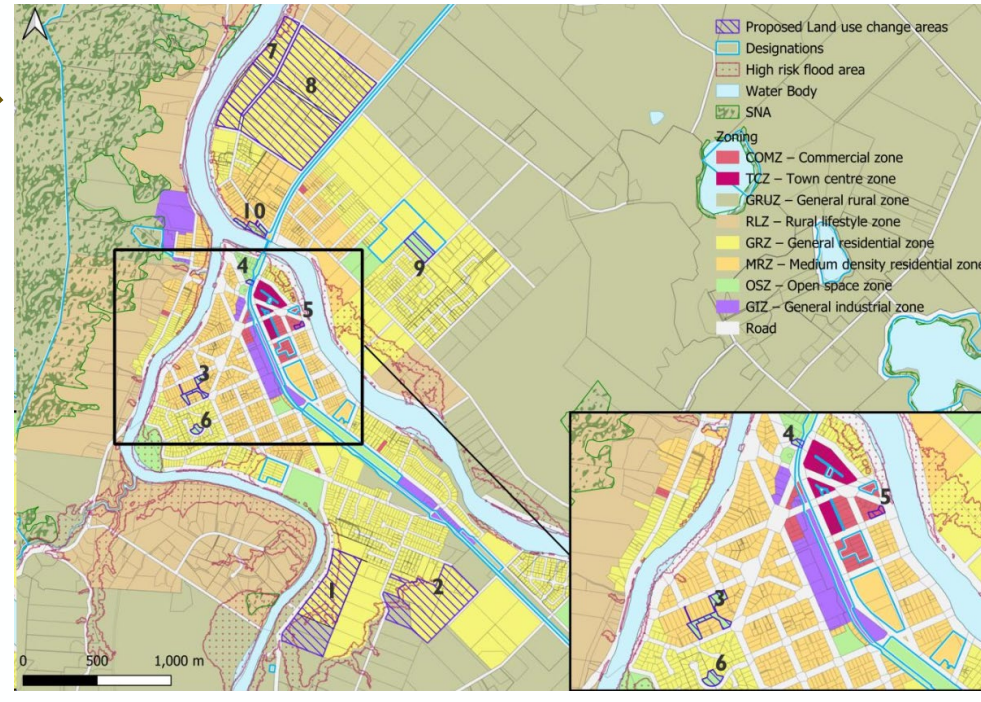
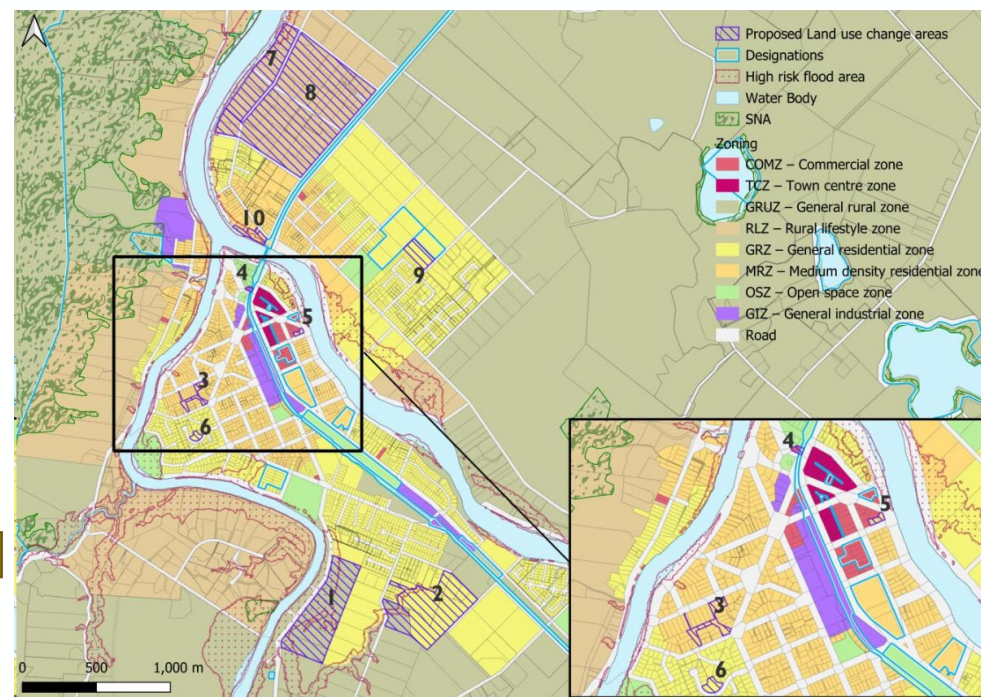
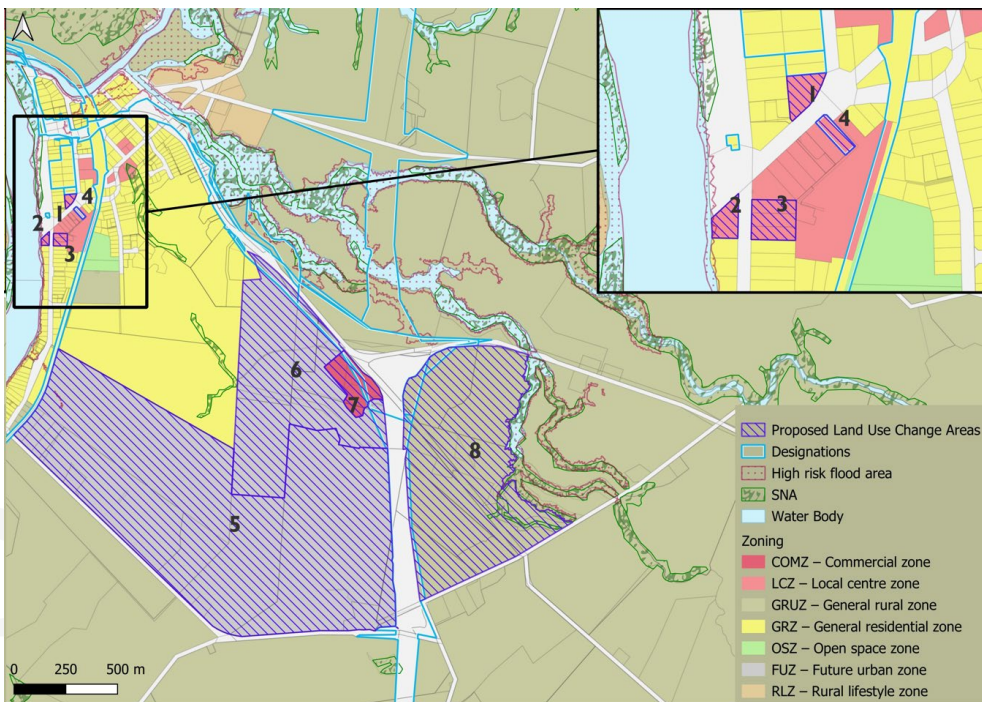
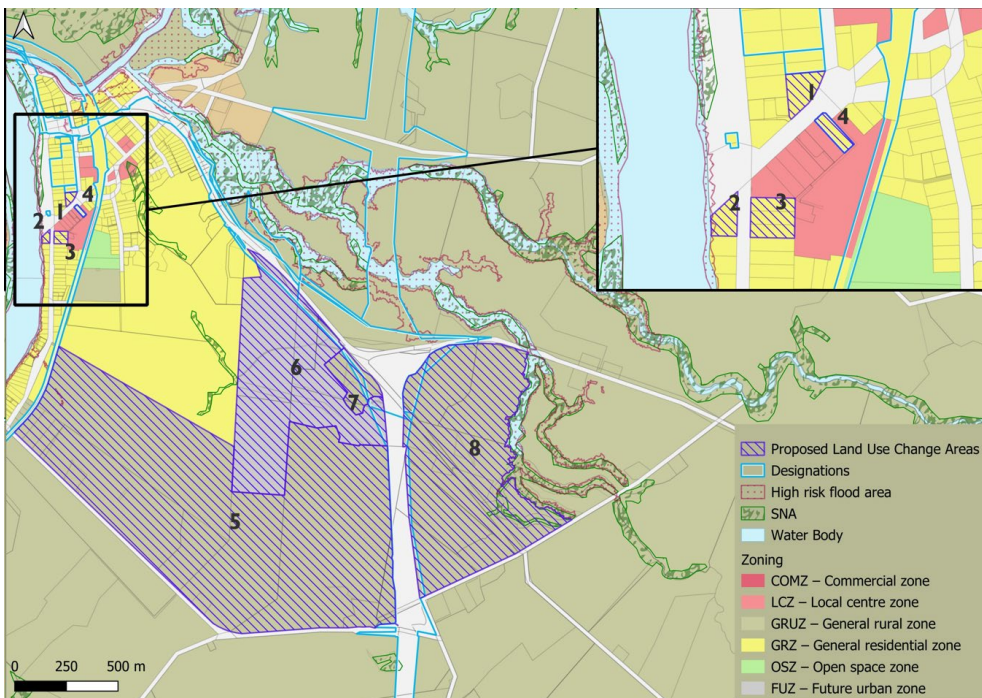


Population Growth, Market Viability and Development Pressures

- Taupiri and Ngaaruawaahia will **not require any net additional commercial/retail zoning** as there is sufficient capacity to meet expected demand, any additional commercial/retail zoning puts the centres at risk of being diluted, pulling business from the economic centre and shifting the focus.
- Strategic sites have been identified in Taupiri for retail/commercial which will provide a more defined economic core for Taupiri without diluting or compromising the existing state. Taupiri follows a similar recommendation as Ngaaruawaahia where consolidation and a focus must be made on the economic core of Taupiri for economic revitalisation.
- Commercial/retail zones provisions have been revamped making it more permissive to develop, which opens more opportunities to see a variety of different shops in the future, this being highly sought after in our initial Structure plan/Town Centre survey.
- The new commercial zones allows also for residential development to occur on the above floors, enabling mixed used development which supports the needed density required for an active economic core.

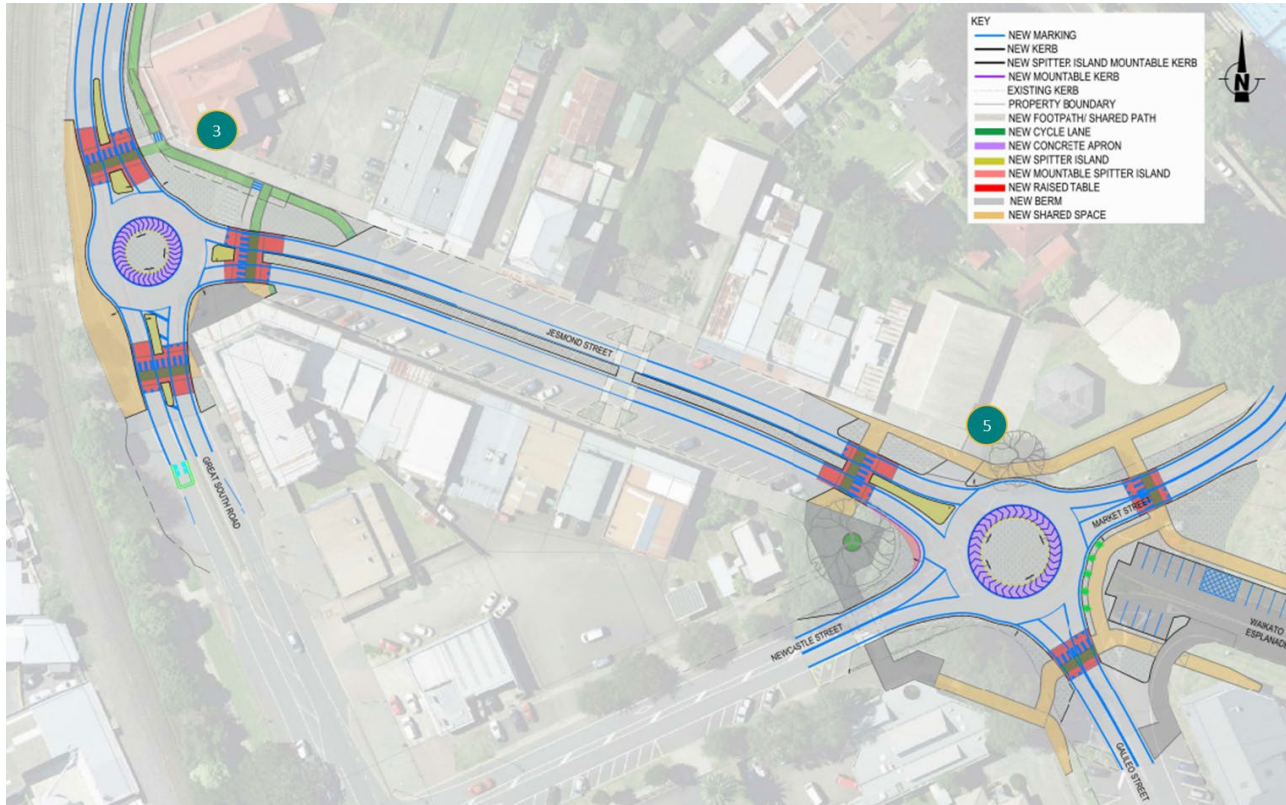
Taupiri – Housing Sufficiency			
Timing	Demand + Margin	Reasonably Realised Capacity	Sufficiency
Short Term (2022-2025)	10	10	0
Medium Term (2022-2032)	200	50	-150
Long Term (2022-2052)	1200	1190	-10

Ngaaruawaahia – Housing Sufficiency			
Timing	Demand + Margin	Reasonably Realised Capacity	Sufficiency
Short Term (2022-2025)	300	20	-280
Medium Term (2022-2032)	500	180	-320
Long Term (2022-2052)	1,800	2,380	580



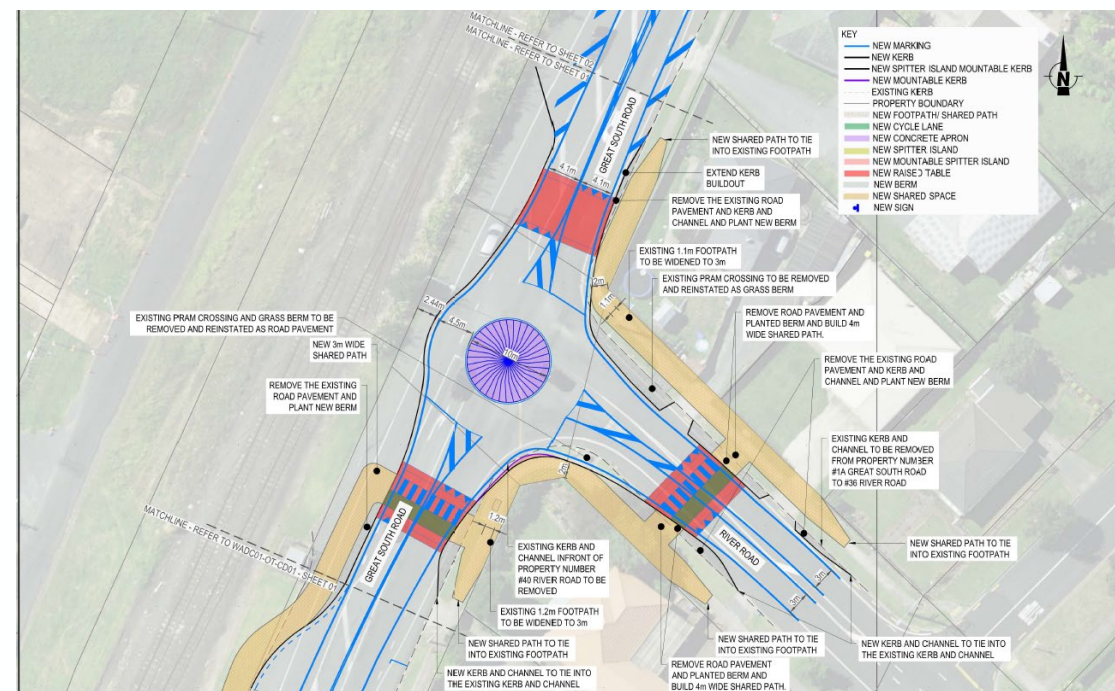
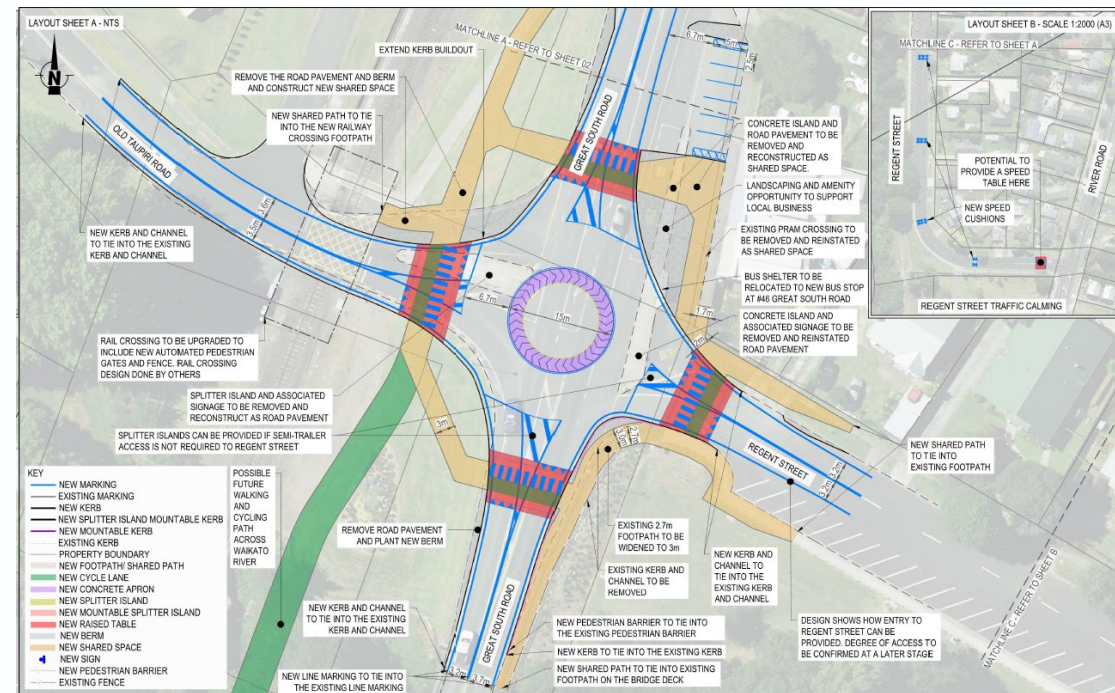
Infrastructure (Transport and Waters)

- Access and Connections (Transport)



95th percentile Project Cost Estimate:
\$ 3.2 million

95th percentile Project Cost Estimate:
\$ 3 million



Ngaaruawaahia - Active Modes

Active Modes

- 1 Future walking and cycling facility across Waikato River.
- 2 Improved walking and cycling connection to Hakarimata Ranges and Te Aroa.
- 3 Improved walking and cycling connection to Te Awa River Ride via Jesmond Street and Waikato Esplanade.
- 4 Upgrade Old Taupiri Road/Great South Road intersection (under investigation).
- 5 Upgrade Great South Road/Princess St intersection to better integrate with rail crossing. Potential signalisation and a raised intersection under investigation.
- 6 Proposed roundabout with raised platforms for pedestrians and cyclists (under investigation).
- 7 Safety improvements at existing roundabout (under investigation).
- 8 Jesmond Street upgrade. This could include providing safer facilities for active modes, increased space for pedestrians, or provision of more space next to shop frontages for outdoor dining (under investigation).
- 9 Remove existing zebra crossing when new crossings are provided at Princess St signals and Jesmond roundabout.
- 10 Provide raised platform at the existing zebra crossing to improve access to public toilets.
- 11 Closure of Waingaro Road intersection and level crossing.



Taupiri - Active Modes

Active Modes

- 1 Provide raised platform at existing zebra crossing.
- 2 Investigate options to reallocate space on Te Putu Street. This could include removing the flush median to provide space for wider footpaths, cycleways and changes to on-street parking.
- 3 Investigate new pedestrian crossing at Te Putu Street intersection using existing island. Could provide a staged crossing on raised platforms.
- 4 Investigate new crossing of Great South Road to improve access to existing bus stops.
- 5 Investigate footpath widening on the approach to the pedestrian underpass.
- 6 New raised crossing outside childcare and extend existing footpath to new crossing.
- 7 Investigate options to improve pedestrian safety when crossing The Crescent. Review kerblines and provide kerb build-outs to reduce the crossing distance.
- 8 Provide raised platform at existing crossing outside the school. Investigate shared paths along Greenlane Road to encourage walking and cycling to school.
- 9 Provide angle parking within existing berm north of the school.
- 10 Investigate new raised crossing at Te Putu St/Greenlane Road intersection to support a continuous route along Te Putu Street.
- 11 Investigate pedestrian and cycle overbridge of railway at Lovell Ave connecting Great South Road to Murphy Lane via sports fields.



Legend

Existing

- Bus stop
- Public toilet

Proposed

- Lower speed limit
- Extension to Te Awa River Ride
- Shared walking and cycling path
- Trail
- Footpath

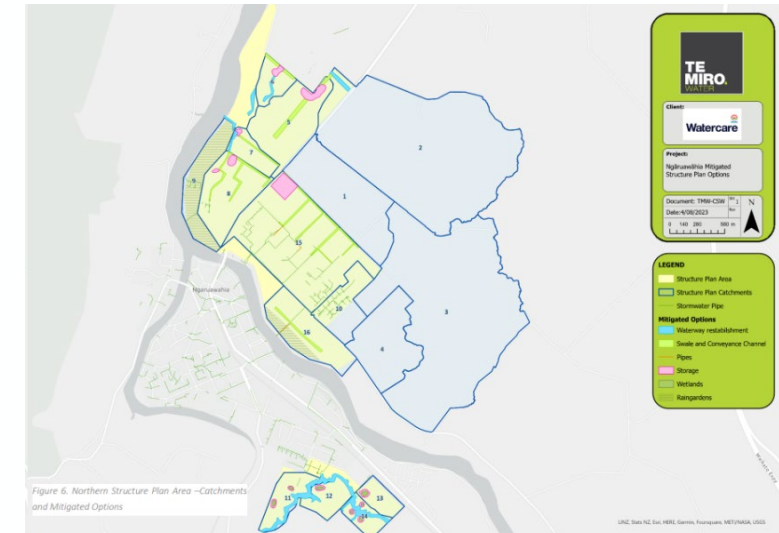
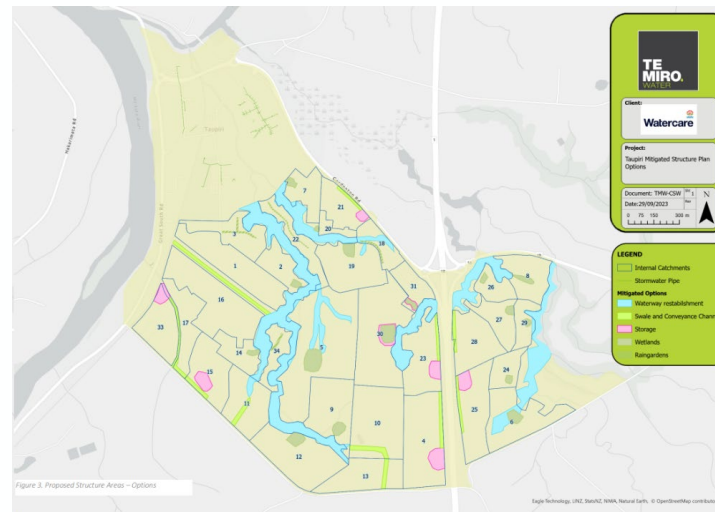
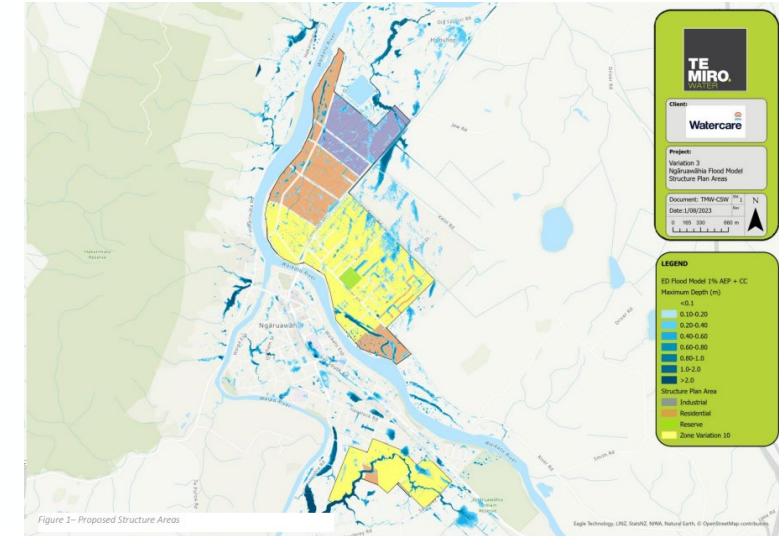
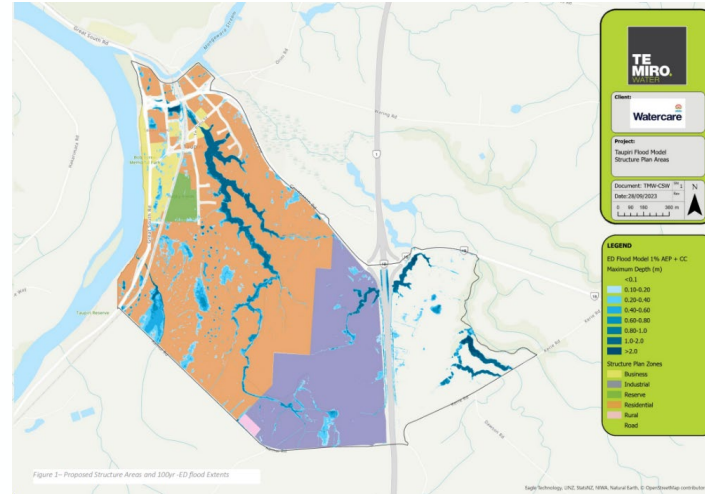
Infrastructure

• Potable Water, Wastewater, and Stormwater

- Potable Water network is functioning as intended and can deal with future growth.
- Wastewater has several level of service issues, but options have been put forward to address this.
- The Ngaaruwaahia Structure Plan presents an opportunity to determine the best practice catchment management solutions, mitigating flood hazard, increased peak flows, volume changes and contaminant loads (including hydrocarbons and heavy metals (zinc/copper) from existing farm practices and new residential development.

Mitigation measures proposed include:

- Flood storage basins;
- Channels or open swales;
- Water treatment devices; and
- Waterway enhancement.

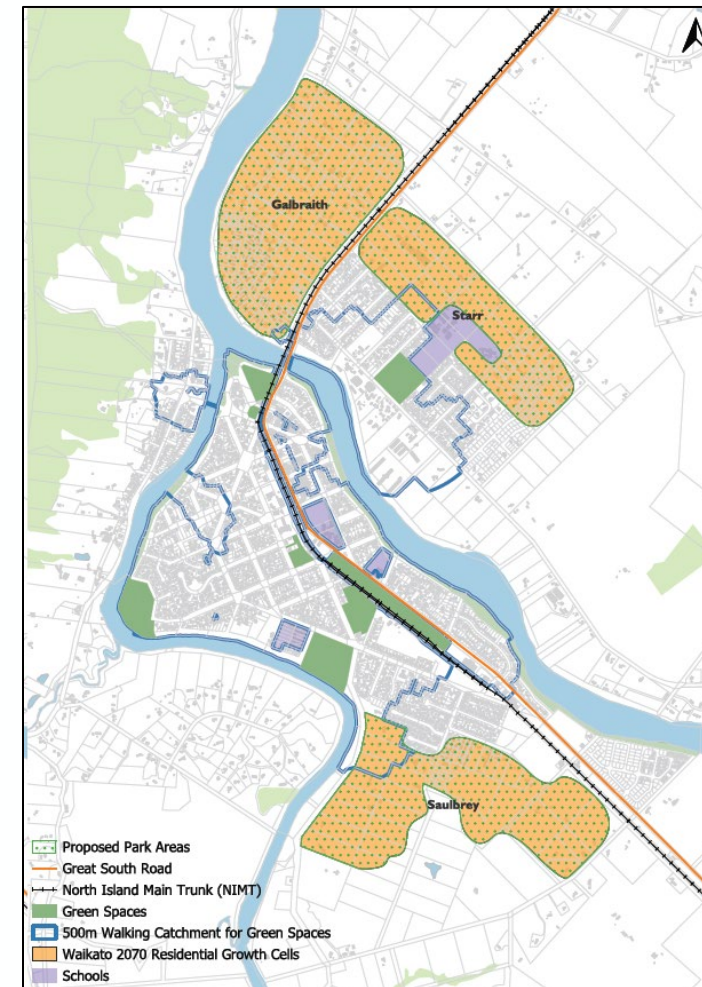
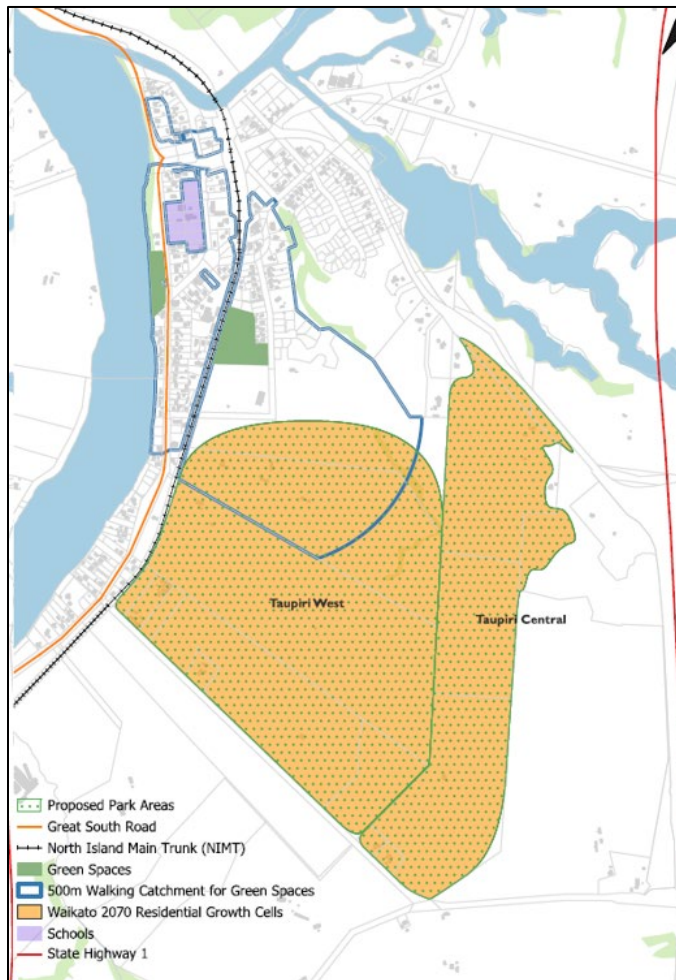


Taupiri		
University of Waikato Scenario		
Possible Park Locations	Required green space in growth cell (ha)	Category
Taupiri Central Growth Cell	0.4	Neighbourhood Or Sports and recreation
Taupiri West Growth Cell	0.9	Neighbourhood Or Sports and recreation
Waikato 2070 Scenario		
Possible Park Locations	Required green space in growth cell (ha)	Category
Taupiri Central Growth Cell	3.7	Neighbourhood Or Sports and recreation
Taupiri West Growth Cell	8.7	Neighbourhood Or Sports and recreation

Ngaaruawaahia		
Possible Park Locations	Required green space in growth cell (ha)	Category
Starr Growth Cell	3.8	Neighbourhood Or Sports and recreation
Galbraith Growth Cell	4.5	Neighbourhood Or Sports and recreation
Saulbrey Growth Cell	5.7	Neighbourhood Or Sports and recreation

Community facilities

- Opportunity to consider the repurpose of the soldiers and settler’s hall at 12 Te Putu Street, Taupiri into a more a more utilised community focused facility.
- Opportunity to consider the repurpose of the Plunket building at 31 Jesmond Street, Ngaaruawaahia into a shared community space.
- Opportunity to consider the veranda space at 18 Jesmond Street, Ngaaruawaahia as a community garden, urban play space, or weekend market.
- Opportunity to develop the recently purchased 60 Jesmond Street, Ngaaruawaahia into a multifunctional community hub.



Cultural and Archaeology

- At the centre of the Tangata Whenua and Statement and Engagement report are the principals of Te Tiriti o Waitangi, meaningful and genuine engagement as well as Tangata Whenua. These have been woven throughout huis to understand the cultural, economic, social, and environmental outcomes sought by Tangata Whenua. Stories have been shared, and planning outcomes incorporated.
- Through discussion is the recommended addition of new Sites and areas of significant to Maaori (“SASM”) which will offer additional protection over areas and significant sites that are important to Maaori. These are:
 - Taupiri Maunga
 - Te Mata o Tuutonga
 - Te Hihi
 - Tuurangawaewae Marae
 - Tuurangawaewae House
 - Te Paemaunga o Hakarimata
- Archaeological sites are both Maaori and European and provide insights into the different eras of the Waikato, sites and their histories are not isolated, but form an archaeological layer that can safeguard/keep special places and may also provide information about human behaviour in past.

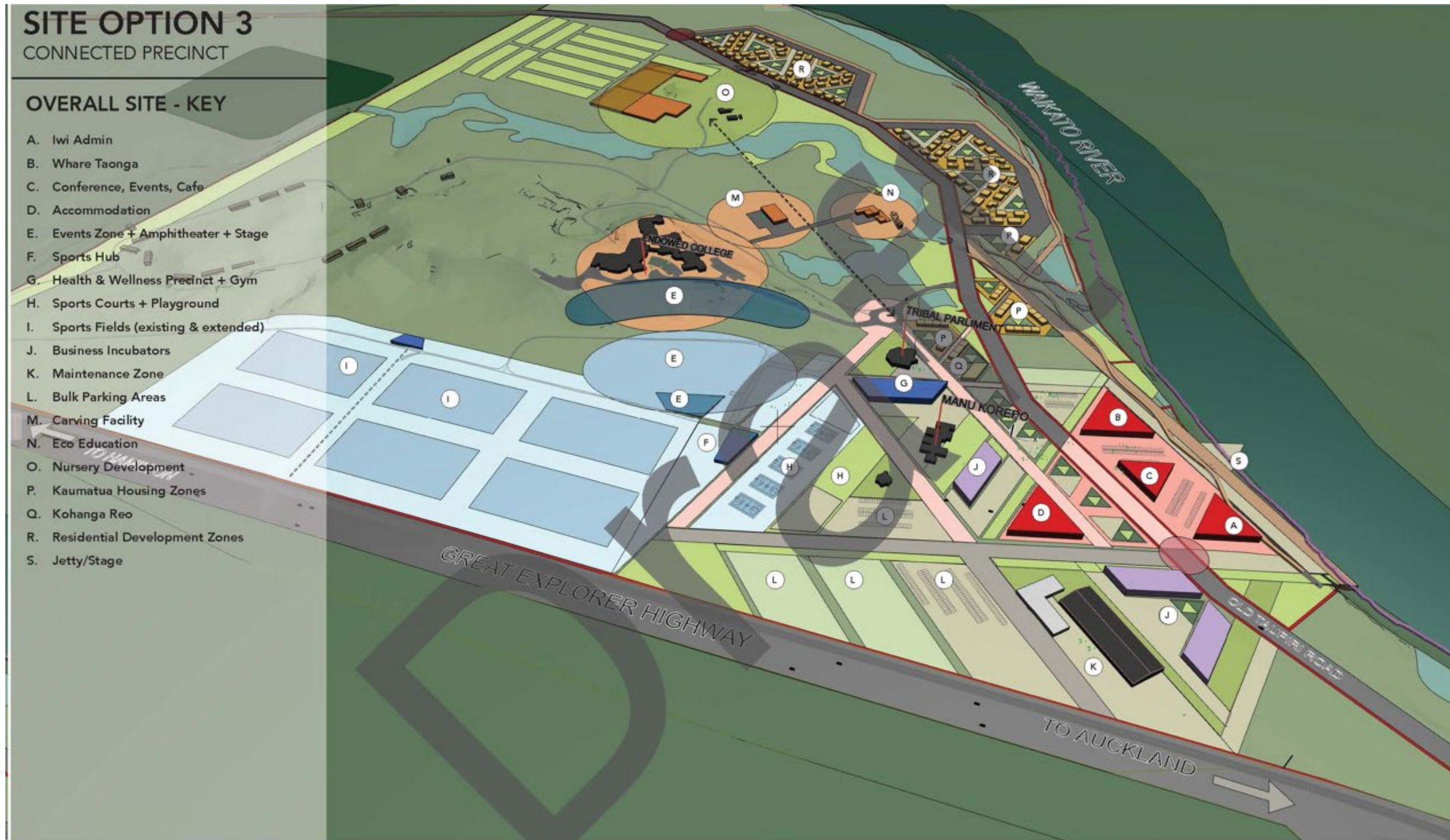


SITE OPTION 3

CONNECTED PRECINCT

OVERALL SITE - KEY

- A. Iwi Admin
- B. Whare Taonga
- C. Conference, Events, Cafe
- D. Accommodation
- E. Events Zone + Amphitheater + Stage
- F. Sports Hub
- G. Health & Wellness Precinct + Gym
- H. Sports Courts + Playground
- I. Sports Fields (existing & extended)
- J. Business Incubators
- K. Maintenance Zone
- L. Bulk Parking Areas
- M. Carving Facility
- N. Eco Education
- O. Nursery Development
- P. Kaumatua Housing Zones
- Q. Kohanga Reo
- R. Residential Development Zones
- S. Jetty/Stage



Ngaaruawaahia



Insights and Opportunities

If you have trouble reading the project lists or implementation plan, please refer to “Appendix 9 - N.H.T Structure Plan & Town Centre Plan - Urban Design Assessment”

Ngaaruwaahia - Wider Town Opportunities

Connected Communities

Promote safe, efficient and attractive active mode connections to encourage walkability and reduce car dominance.

1. Extend the Te Awa River Ride cycle route from Ngaaruwaahia via Hopuhopu, with links to Taupiri Maunga summit track and urupaa. There is a desire to promote Ngaaruwaahia as a destination (part of a cultural and heritage tourism route) incorporating the Hakarimata Ranges, Waipaa and Waikato Rivers.
2. Connect the town centre with the Waikato River and Te Awa River Ride cycle route.
3. Identify a site along Great South Road for a Te Hula stop (Hamilton to Auckland Rail service).
4. Provide safer east west active mode connections across Great South Road and NIMT.
5. Improve active mode connections across the Great South Road bridge to connect to the wider community.
6. Establish walking and cycling path along Old Taupiri Road.
7. Improve walking and cycling along Waingaro Road bridge.
8. Provide traffic calming initiatives along Hakarimata Road to reduce speeding issues.
9. Provide a pedestrian access point to Waipaa River from Hakarimata Road.
10. Establish signage to the Hakarimata Ranges.
11. Opportunity to reroute freight movement.
12. Strengthen connections between the Waipaa Esplanade Walkway to The Point.

Identity

Strengthen the existing identity and character of the place.

1. Celebrate areas of cultural significance such as the Klingitanga Reserve, the Point, Hakarimata Ranges, Tuurangawaewae Marae and House through wayfinding, artwork and storytelling.
2. The Waikato River is well-used for the annual Waka Ama event held in March. Opportunities for riverside recreation, access, river edge improvements and viewing areas toward Marae.
3. Opportunity to highlight the riverside heritage features of the flour mill.
4. Opportunity for additional amenities such as seating and picnic tables at Te Mana o Te Rangitanga Reserve.
5. Opportunity for additional seating, upgrade of toilets and playground at Paterson Park.
6. Emphasise entry to Tuurangawaewae House.
7. Establish township gateways as a way of physical markers to signify the town's entrance and exit points.

Other opportunities

- Identify locations for youth facilities such as a basketball courts.

Natural Environment

Connect communities to blue-green networks and provide recreational activities and opportunities.

1. Provide community amenities to the riverside such as viewing platforms, shelters and community gathering spaces.
2. Native re-vegetation of riverside to improve water quality, biodiversity and pest control.
3. Identify locations for community gardens and community nurseries.
4. Rehabilitate old quarry back to native bush with the potential for recreation uses.
5. Provide secure bike parking at Hakarimata Reserve.
6. Provide additional community amenities to utilise this open space.

Other opportunities

- Identify opportunities for additional open spaces for the northern community.

Growth and Economy

Support projected growth with well connected services, amenities and commercial opportunities to fit the needs of the community.



Insights and Opportunities

Ngaaruawaahia - Town Centre Opportunities

Connected Communities

Promote safe, efficient and attractive active mode connections to encourage walkability and reduce car dominance

1. Create a high quality pedestrian experience along Jesmond Road with reduced speeds and pedestrian prioritised movement.
2. Provide a clear pedestrian link from bridge down to edge of the Waikato River.
3. Improve the Jesmond Street five leg roundabout at the eastern end with a pedestrian and cycling focused solution.
4. Provide a safe and prioritised pedestrian and cycling connection.
5. Review of on street parking, there are carparks too close to zebra crossing obstructing visibility.
6. Upgrade Intersection at Old Taupiri Rd and Regent St.
7. Clear sightlines and visibility at New World carpark entry points.
8. Increase visibility turning out of Martin Street.
9. Maximise active mode connectivity through roundabout to improve access to Durham Street Precinct.
10. Improve visibility at the corner of Waingaro Road and Herschel Street.

Other opportunities

- Create a wayfinding and signage strategy and plan that reinforces key cultural sites, routes and amenities.

Identity

Strengthen the existing identity and character of the place

1. Klingitanga Reserve and Tuurangawaewae House are significant cultural sites that deserve recognition by way of protection and preservation.
2. Provide visual cues across the North Island Main Trunk by improving the back/service areas of Durham Street buildings and edge of Klingitanga Reserve with landscape treatment and art.
3. Opportunity for a rest point with bike parking and e bike charging stations at The Point and along Waikato River.
4. Market area at Jesmond Street - inclusion of shelter to encourage more active use of the space.
5. Proposed masterplan for The Point with recreational facilities, extended Te Awa River Ride cycle route/Walkway and carparking.
6. Key corner site - opportunity for mixed use community functions such as library, meeting rooms and retail.

Other opportunities

- Design guidelines around town centre appearance and improved existing retail and commercial frontages with canopies, street furniture, seating, planting etc. Involve local schools in painting murals to build a sense of ownership within the community.
- Opportunity for story telling, signage and expression of cultural narratives through township - specific places to be investigated.
- Consolidate community facilities where possible, consider relocation or land swap.

Natural Environment

Connect communities to blue-green networks and provide recreational activities and opportunities

1. Protect existing trees and look to provide upgraded seating, bins and other amenities.

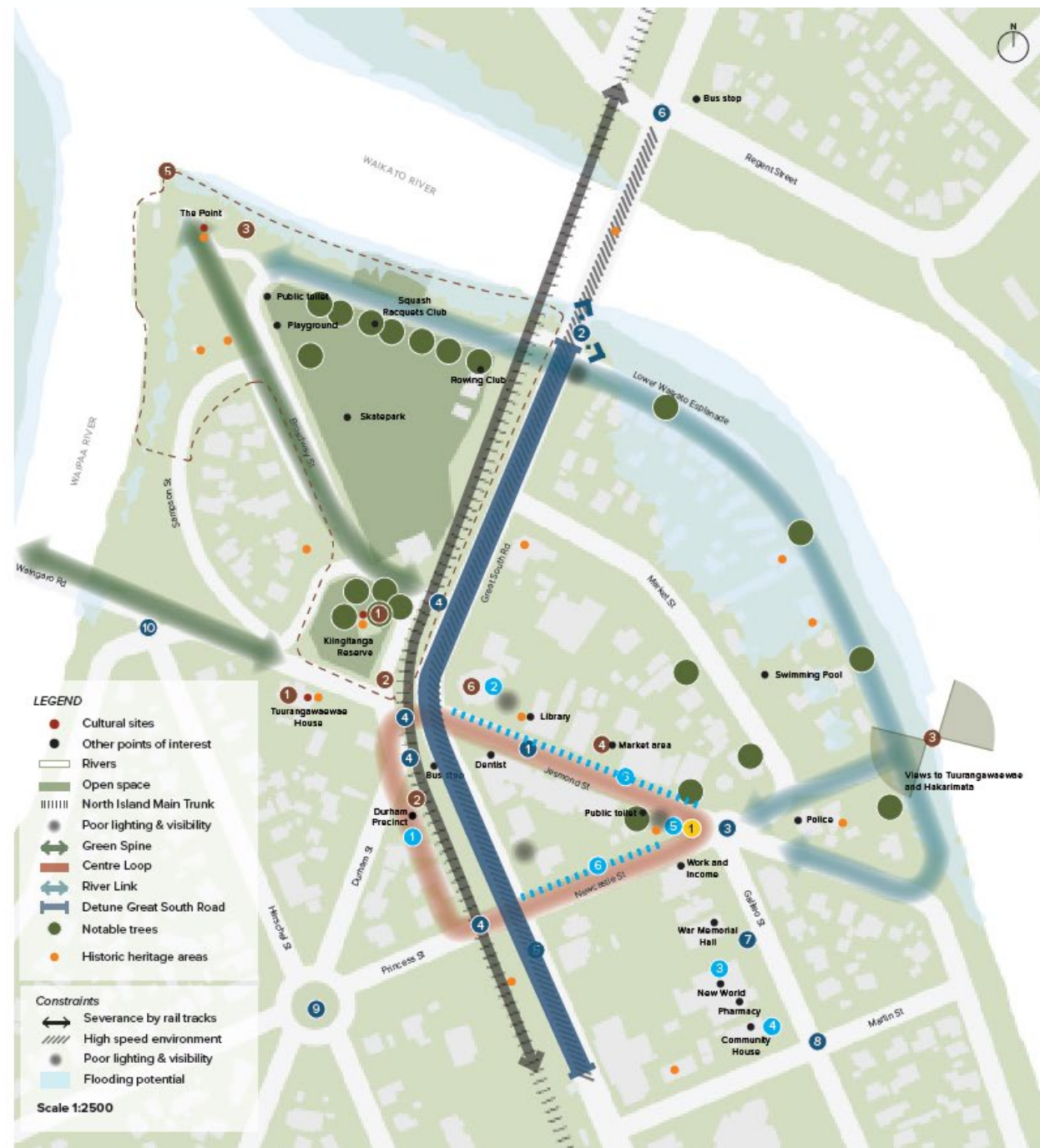
Other opportunities

- Consider inclusion of water sensitive design initiatives such as rain gardens, planted medians, permeable paving, swales and drought resistant planting.

Growth and Economy

Support projected growth with well connected services, amenities and commercial opportunities to fit the needs of the community

1. Future proof Durham Precinct
2. Redevelop the corner site with opportunities to combine with other community uses.
3. Consider future expansion of New World as an anchor tenant and catalyst
4. Opportunity to relocate Community House to accommodate and enable growth of community services.
5. Redevelop Plunket building for future community use.
6. Consolidate gaps in the streetscape and reactivate vacant sites with functions that provide active uses after hours.



Key Moves

Ngaaruwaahia - Wider Town

Natural Environment

Recreational opportunities

1. Undertake open space and playground assessment and investigate potential locations for parks to serve wider Ngaaruwaahia. Consider multi functional uses such as wetland, playground and community gardens.
2. Complete masterplan for The Point.

Ecological opportunities

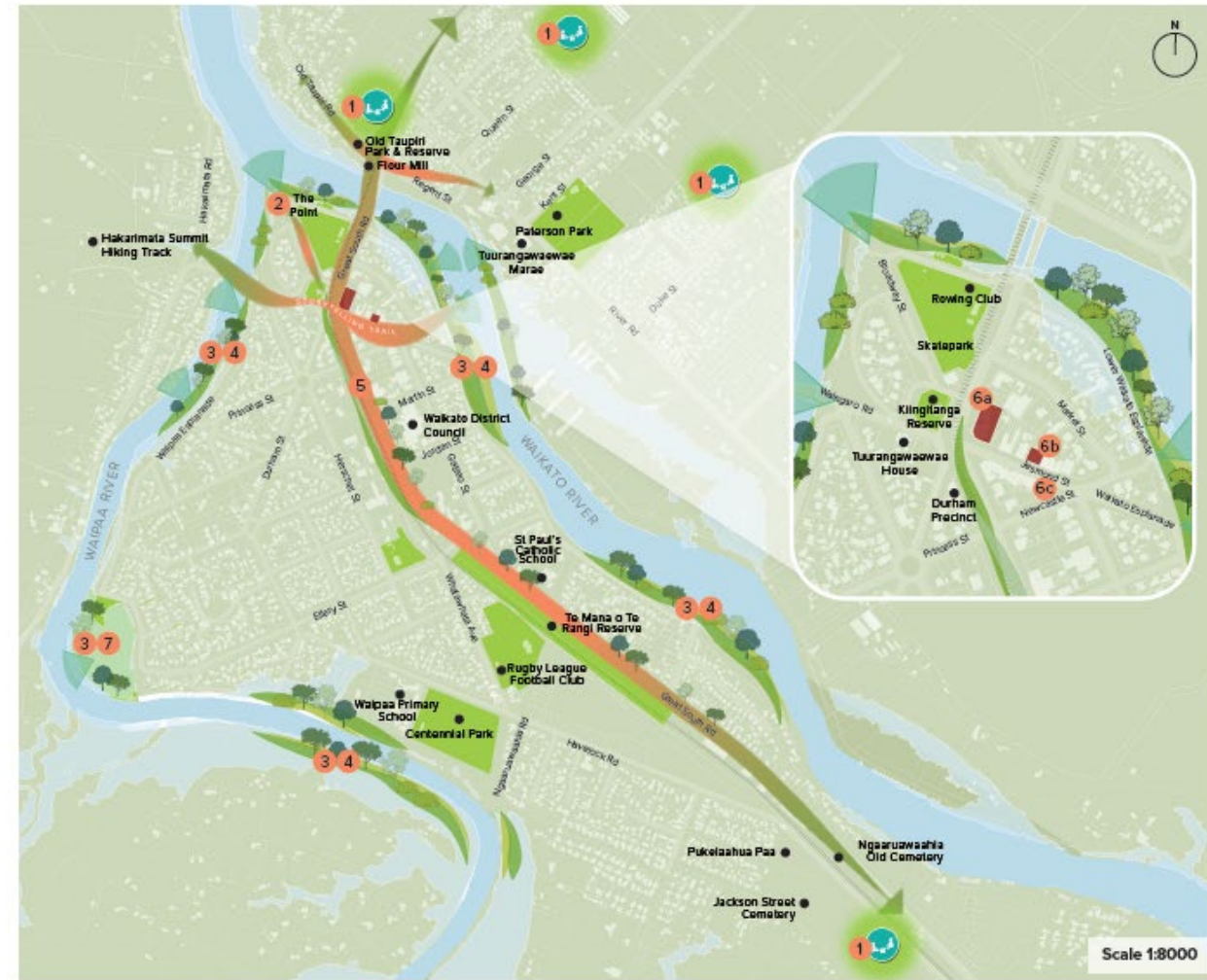
3. Improve resilience to localised flooding through a possible suite:
 - Increased permeable surfaces and attenuation planting.
 - Riverbank planting.
 - River edge terracing to protect recreation areas next to the river.
 - Greening of current paved spaces (swales).
 - Wetlands (to be confirmed through investigation).
 - Water sensitive urban design (to be confirmed through investigation).
4. Increase native tree cover and fruit trees in town.
5. Include additional street trees along Great South Road.

Other projects

- Improve native fauna habitat through education/interpretation and restoration of waterways (native fish, eels etc).
- Undertake a climate risk assessment.

Growth and Economy

6. Key catalyst development sites:
 - a. Corner of Great South Road and Jesmond Street
Community uses - Library, community hall, innovation hub, communal working hub.
 - b. Investigate the use of the Chorus site at centre of Jesmond Street as a village green - Potential uses include urban community garden, urban play space and maintaining the weekend market.
 - c. Redevelop Plunket building for future community use.



Playground



Urban play in Village Green



Mountain bike/pump track



Kids bike park



River access



Urban community garden

Ngaaruawaahia - Town Centre

Connected Communities

Active mode opportunities

1. Extension of the Te Awa River Ride cycle route.
2. Create a clear walking and cycling recreation link from the Waikato River to the Waipaa River, linking Hakarimata Ranges through Klingitanga Reserve, Jesmond Street and Waikato Esplanade.
3. Create a clear walking and cycling recreational loop to include Waipaa Esplanade Reserve, The Point, Regent Street/Old Taupiri Road, Lower Waikato Esplanade, Durham Precinct and Turangawaewae House.
4. Create a pedestrian and cycle connection between Te Awa River Ride cycle route (Belt Street), St Paul's Catholic School, Rugby League Club (Whatawhata Avenue), Centennial Park and the Waipaa River Trail.
5. New active mode connection over the Waikato River.
6. Upgrade active modes facilities over Waingaro Road bridge.
7. Create a gateway marker at 46 & 106 Great South Road.
8. Upgrade of corridors with active modes:
 - Jesmond Street
 - Great South Road (Both directions - cycleway and footpath)
 - Hakarimata Road and Brownlee Avenue (shared path)
 - Waikato Esplanade (bi-directional cycleway and footpath)
 - Lower Waikato Esplanade (Both directions - cycleway and footpath)

Intersection and roundabout upgrade

9. Improve the safety and visibility of intersections:
 - Great South Road and River Road.
 - Great South Road and Jesmond Street (proposed new roundabout).
 - Great South Road, Princess Street and Newcastle Street (signalisation under investigation).
 - Great South Road and Waingaro Road (proposed closure under investigation).
 - Great South Road and Market Street.
 - Waingaro Road and Herschel Street (traffic calming or mirrors).
 - Old Taupiri Road (south), Great South Road and Regent Street.
 - Martin Street and Galileo Street (still under investigation).
10. Improve the safety and visibility of Jesmond Street roundabout.

Enhancing the corridor experience

11. Jesmond Street Improvements:
 - Consider shared zones and additional informal crossings to improve pedestrian connections.
 - Additional informal crossings and streetscape upgrades. Integrate crossings with intersection upgrades and development sites.
12. Great South Road Improvements:
 - Traffic calming and speed management.
 - Roadway art at existing pedestrian crossings.
 - Additional informal crossing points.
 - Beautify the streetscape with planted promenade.
 - Separated active modes corridor.
 - Formalise crossing on Galileo Street outside Ngaaruawaahia Primary School.
13. River Road:
 - Traffic calming and speed management.
 - Formalise crossings in front of Turangawaewae Marae.

Transport Infrastructure

14. Locate Transport Hub to south of Durham Precinct (location under investigation).
15. Provide bike parking at the base of the Hakarimata Ranges and The Point.
16. Identify spaces for charging points for electric vehicles and bikes at Hakarimata Ranges, Jesmond Street and Durham Precinct.
17. Define and formalise car parks at the Paterson Park in front of the netball courts.



Wayfinding signage



Active modes bridge



Sheltered and protected bike parking



Separated active modes



Tactical urbanism at crossings



Bus hub

Identity

Amenities

1. Development of a reserve site masterplan for Te Mana O Te Rangi Reserve that expresses and represents hapuu koorero through signage, planting and artwork.
2. Upgrade toilets, provide shelter and seating at Paterson Park.
3. Provide rest stops, drinking fountains, bike parking, shelters and viewing platforms along the Waikato River (Lower Waikato Esplanade and Sampson Street).
4. Upgrade Waipaa Esplanade walkway trail with rest stops, lookouts, outdoor seating.
5. Create a wayfinding suite for key destinations including the following: Ngaaruaaahia town centre, Hakarimata Ranges, The Point and Waipaa Esplanade Walkway.
6. Celebrate sites of cultural significance and protect waahi tapu sites through a suite of bi-lingual signage, art work trails, cultural expression and storytelling opportunities at Kingitanga Reserve, The Point, Hakarimata Ranges, Taurangawaewae Marae and House, Pukeiaahua Paa and The Flour Mill.
7. Placement of expressions (pou, koowhatu, native trees) to whakanoa (restore balance) to locations of colonial reminders.

Maintenance/CPTED/Safety

9. Fix light bulbs that are not working along Great South Road.
10. Introduce mirrors and lights at staircase at the base of the bridge.
11. Trim overgrown vegetation at 3 Galileo Street, 3 Kent Street, The Point, Great South Road and Market Street.
12. Clean up of graffiti at 11 Jordan Street, 21 River Road, 3 Broadway Street, Great South Road bridge and along Great South Road.

Other projects

- Review and update the Commercial Design Guidelines.
- Undertake maintenance and repair of street lighting across the township.



Cultural storytelling signage



Integrated narratives



Shelter and shade at parks



Viewing platform along river



Village green/Town Square



Integrated gateway and interpretive signage

Artist Impressions of Key Moves

Amenity upgrades to Paterson Park



Implementation

Ngaaruawaahia

Project	Prioritisation			Complexity		
	Short term 1-3 years	Medium term 3-10 years	Long term 10+ years	Low	Medium	High
NATURAL ENVIRONMENT						
2. Complete masterplan for The Point.	✓			✓		
3. Improve resilience to localised flooding through a possible suite:						
- Increased permeable surfaces and attenuation planting.	✓	✓	✓			✓
- Riverbank planting.	✓	✓	✓			✓
- River edge terracing to protect recreation areas next to the river.	✓	✓	✓			✓
- Greening of current paved spaces (swales).	✓	✓	✓			✓
- Wetlands (tbc).	✓	✓	✓			✓
- Water sensitive urban design (tbc).	✓	✓	✓			✓
CONNECTED COMMUNITIES						
1. Extension of the Te Awa River Ride cycle route.			✓			✓
4. Create a pedestrian and cycle connection between Te Awa River Ride cycle route (Belt Street), St Paul's Catholic School, Rugby League Club (Whatawhata Avenue), Centennial Park and the Waipaa River Trail.			✓			✓
5. New active mode connection over the Waikato River.			✓			✓
6. Upgrade active modes facilities over Waingaro Road bridge.			✓			✓
7. Create a gateway marker at 46 & 108 Great South Road.	✓			✓		
8. Upgrade of corridors with active modes:						
- Jesmond Street.			✓		✓	
- Great South Road (Both directions - cycleway and footpath).		✓			✓	
- Hakanimata Road and Brownlee Avenue (shared path).	✓			✓		
- Waikato Esplanade (bi-directional cycleway and footpath).	✓			✓		
- Lower Waikato Esplanade (Both directions - cycleway and footpath).	✓			✓		
9. Improve the safety and visibility of Intersections:						
- Great South Road and River Road.		✓	✓			✓
- Great South Road and Jesmond Street (proposed new roundabout).		✓	✓			✓
- Great South Road, Princess Street and Newcastle Street (signalisation under investigation).		✓	✓			✓
- Great South Road and Waingaro Road (proposed closure under investigation).		✓	✓			✓
- Great South Road and Market Street.		✓	✓			✓
- Waingaro Road and Herschel Street (traffic calming or mirrors).		✓			✓	
- Old Taupiri Road (south), Great South Road and Regent Street.	✓					✓
- Martin Street and Galileo Street (still under investigation).		✓	✓			✓
10. Improve the safety and visibility of Jesmond Street roundabout.		✓	✓			✓
11. Jesmond Street improvements:						
- Consider shared zones and additional informal crossings to improve pedestrian connections.			✓		✓	
- Additional informal crossings and streetscape upgrades. Integrate crossings with intersection upgrades and development sites.			✓		✓	

Ngaaruwaahia

Project	Prioritisation			Complexity		
	Short term 1-3 years	Medium term 3-10 years	Long term 10+ years	Low	Medium	High
12. Great South Road improvements:						
· Traffic calming and speed management.		✓			✓	
· Roadway art at existing pedestrian crossings.		✓			✓	
· Additional informal crossing points.		✓			✓	
· Beautify the streetscape with planted promenade.		✓			✓	
· Separated active modes corridor.		✓			✓	
· Formalise crossing on Galileo Street outside Ngaaruwaahia Primary School.	✓	✓		✓		
13. River Road:						
· Traffic calming and speed management.		✓			✓	
· Formalise crossings in front of Tuurangawaewae Marae.		✓			✓	
IDENTITY						
5. Create a wayfinding suite for key destinations including the following; Ngaaruwaahia town centre, Hakarimata Ranges, The Point, Waipaa Esplanade Walkway, Te Awa River Ride cycle route and proposed extension.	✓			✓		
6. Celebrate sites of cultural significance and protect waahi tapu sites through a suite of bi-lingual signage, art work trails, cultural expression and storytelling opportunities at:						
· Kiingitanga Reserve.	✓				✓	
· The Point.	✓				✓	
· Hakarimata Ranges.	✓				✓	
· Tuurangawaewae Marae.	✓				✓	
· Tuurangawaewae House.	✓				✓	
· Pukeiaahua Paa.	✓				✓	
7. Placement of expressions (pou, koowhatu, native trees) to whakanoa (restore balance) to locations of colonial reminders.		✓			✓	



View of Great Street Road in Ngaaruwaahia

Норухору

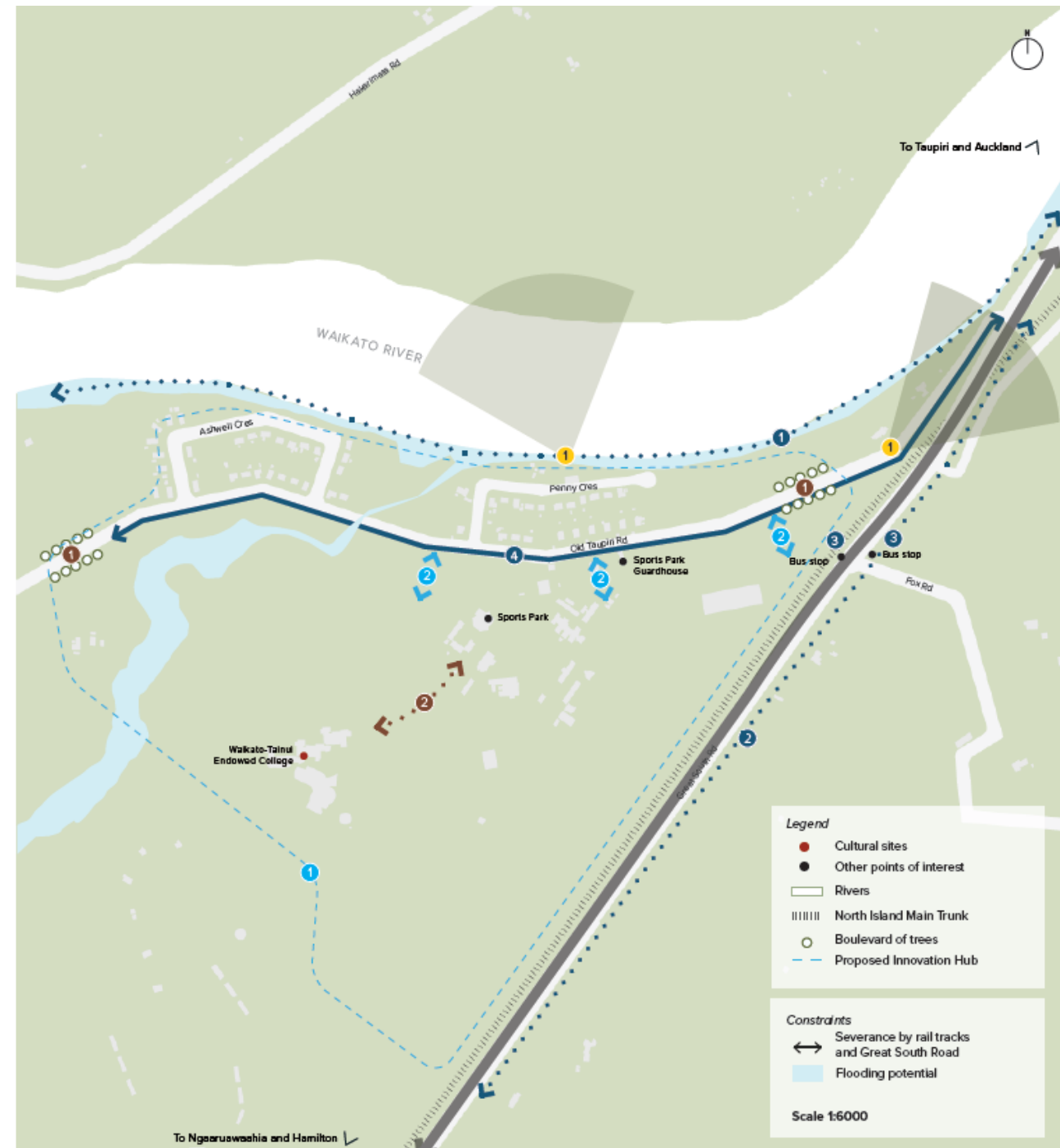


Insights and Opportunities

If you have trouble reading the project lists or implementation plan, please refer to “Appendix 9 - N.H.T Structure Plan & Town Centre Plan - Urban Design Assessment”

Hopuhopu Opportunities

- Connected Communities**
 Promote safe, efficient and attractive active mode connections to encourage walkability and reduce car dominance.
 1. Extend the Te Awa River Ride cycle route from Ngarauwāhia through Hopuhopu with the inclusion of wayfinding, rest stops and improved facilities along the river.
 2. Provide safe and prioritised active mode connections between Ngarauwāhia and Taupiri that is located off the main road. Consider safety, directness and visibility.
 3. Upgrade and bus shelters and improve access to bus stops on Great South Road.
 4. Review bus routes and bus stops down Old Taupiri Road in response to anticipated growth of the settlement, providing residents better access to public transport.
- Identity**
 Strengthen the existing identity and character of the place.
 1. A boulevard of trees line Old Taupiri Road as you enter the Hopuhopu area from the north-east. There is opportunity for a physical marker and a similar boulevard to be planted on the west as gateways into the township.
 2. Enable continued development of cultural and visitor activities in collaboration with Waikato-Tainui that reflects the heritage of the area.
- Natural Environment**
 Connect communities to blue-green networks and provide recreational activities and opportunities.
 1. Opportunities to open up view corridors to significant natural features such as the Waikato River, Taupiri Maunga and Hakerimata Ranges.
- Growth and Economy**
 Support projected growth with well connected services, amenities and commercial opportunities to fit the needs of the community.
 1. Future Hopuhopu Innovation Hub which will include residential, commercial, education and recreational functions.
 2. Proposed entry points.



Key Moves

Key Moves & Outcomes

The opportunities identified were shared with the community across two open days and through online engagement, where feedback and support was gathered. The opportunities were also assessed against the agreed Outcome Principles for the project, providing a basis for assessment.

The feedback received relating to the opportunities identified were considered together to confirm the key moves and outcomes for Hopuhopu and how these are to be prioritised over the short, medium and long term. It is recognised that some of the projects are highly complex, will have associated cost, and will need further detailed investigation before they are able to be confirmed in the Long Term Plan for delivery.

The key moves and outcomes have been identified on the following maps. The anticipated prioritisation of these is addressed in the Implementation Section of the document. The key moves and outcomes have also been grouped into the design principles of:

- Connected Communities
- Identity
- Natural Environments
- Growth and Economy

Walking and cycling activities have been identified separately as inputs from the Transport Workstream.

Hopuhopu

Connected Communities

Active mode opportunities

1. Extension of the Te Awa River Ride through Hopuhopu with the inclusion of rest stops and formal and informal viewing areas.
2. Create a safe and clear active mode connection between Ngaaruwaahia and Taupiri along Great South Road (separated cycleway).

Enhancing the pedestrian experience

3. Establish a boulevard of trees as a gateway marker into Hopuhopu.
4. Protect existing trees/boulevard.
5. Provide bus shelters and a new pedestrian crossing for existing and future bus stops. Explore the re-location of bus stops to a location within Hopuhopu that does not require users to cross Great South Road and the NIMT and provides better access to public transport for residents.

Intersection and roundabout upgrade

6. Improve the safety and visibility of the Old Taupiri (north) Great South Road intersection (under investigation).

Identity

7. Support the development of the Waikato-Tainui Masterplan for Hopuhopu.



Rest stop and viewing area



Upgraded bus shelters



Riverside shared path



Tree boulevard

Implementation

Hopuhopu

Project	Prioritisation			Complexity		
	Short term 1-3 years	Medium term 3-10 years	Long term 10+ years	Low	Medium	High
CONNECTED COMMUNITIES						
1. Extension of the Te Awa River Ride cycle route through Hopuhopu with the inclusion of rest stops and formal and informal viewing areas.			✓			✓
2. Create a safe and clear active mode connection between Ngaaruwaahia and Taupiri along Great South Road (separated cycleway).			✓		✓	
3. Establish a boulevard of trees as a gateway marker into Hopuhopu.		✓			✓	
6. Improve the safety and visibility of the Old Taupiri (north)/Great South Road intersection (under investigation).		✓			✓	
BUSINESS AS USUAL						
4. Protect existing trees/boulevard.	✓			✓		
5. Provide bus shelters and a new pedestrian crossing for existing and future bus stops.	✓			✓		



Taupiri



Insights and Opportunities

If you have trouble reading the project lists or implementation plan, please refer to “Appendix 9 - N.H.T Structure Plan & Town Centre Plan - Urban Design Assessment”

Taupiri Opportunities

Connected Communities

Promote safe, efficient and attractive active mode connections to encourage walkability and reduce car dominance.

1. Opportunity to extend the Te Awe River Ride cycle route from Ngaaruwaahia via Hopuhopu to Taupiri, with link to the Taupiri Maunga summit track and urupaa.
2. Provide safe walking and cycling connections to the service station precinct on Gordonton Road.
3. Create safe and visible pedestrian and cycling connections between Taupiri Marae and Hopuhopu.
4. Provide a safe crossing facility at Great South Road bus stop.
5. Review layout of the Great South Rd and Gordonton Rd roundabout to improve visibility and safety.
6. Provide signage to Taupiri urupaa along Watts Grove.
7. Create safer crossings at Te Putu St from Educare to the footpath across the road.
8. Upgrade active modes facilities on Te Putu Street bridge.
9. Improve the connection at Taupiri School, currently a lee crossing but no formal pedestrian crossing. Manoeuvring & on-street parking outside Taupiri School is limited.
10. Improve the safety of Murphy Lane/Te Putu St intersection visibility.
11. Upgrade stairs to the urupaa.
12. Provide interim CPTED solutions at the two underpass - Te Putu Street and Greenlane Rd and consider future alternative crossing solutions.
13. Detune Great South Road to enable better cross connectivity and minimise severance to the river.
14. Provide north-south connections through the new growth area between Taupiri Marae and Murphy Lane.
15. Improve safety and visibility of Button Lane and Gordonton Road intersection.

Identity

Strengthen the existing identity and character of the place.

1. Utilise the river as a future transportation route and/or ecotourism opportunity with fishing/river fall activities to tie-in with local community.
2. Opportunity for storytelling to improve connections, outcomes & protection of areas of cultural significance. E.g. Puka I Ahua, Taupiri Maunga, paa sites, urupaa.
3. Establish a community focal point on the eastern side of the rail tracks that reflects the local “village” identity.
4. Establish a riverside focal point that connects between the Hopin Stopin cafe, Bob Bryna Memorial Park and Te Putu Street commercial functions.
5. Improve lighting in targeted areas such as the Rugby Football Club.

Natural Environment

Connect communities to blue-green networks and provide recreational activities and opportunities.

1. Taupiri Maunga, Waikato River, Urupaa, Hakarimata Ranges, Flaxmill and several heritage sites are the assets that make Taupiri unique. These should be celebrated and promoted through story telling, way finding and iconic sculptures.
2. Upgrade pathways to include wayfinding, shelter, and rest stops to support riverside recreational use along the Waikato River and adjacent reserves. Consider other benefits such as weed/pest control and re-vegetation for river ecosystem restoration.
3. Initiatives to restore kiwi habitat at Taupiri Maunga.

Growth and Economy

Support projected growth with well connected services, amenities and commercial opportunities to fit the needs of the community.

1. Opportunity to consider local convenience to service new growth area closer to the Taupiri Marae.
2. Opportunity for future industrial uses around service station precinct on Gordonton Road.
3. The existing Taupiri Rugby Football Club are well used with the desire for another sports/community hub targeted for the youth.
4. Opportunity for new community amenities within township i.e. Supermarket, post office, afterschool care and Educare.

Other opportunities

- Future proof for the aging population in Taupiri with the provision of appropriate accommodation and amenities.
- Identify and provide high quality open spaces to service future growth.



Key Moves

Taupiri Township

Connected Communities

Active mode opportunities

- 1 Extension of the Te Awa River Ride to Taupiri with the inclusion of rest stops and viewing areas.
- 2 Create a clear walking and cycling loop from town centre - Great South Road, Te Putu Street, Onslow Avenue, Gordonton Road and segregating off to Watts Grove to connect to Taupiri paa and urupaa.
- 3 Other active mode connections:
 - a. Upgrade Te Putu Street and bridge.
 - b. Tarahoke Paa, Taupiri Marae and Great South Road with a connection over rail (under investigation).
 - c. Investigate pedestrian and cycle overbridge of railway connecting Great South Road to sports fields.
- 4 Create a wayfinding suite for key destinations including the urupaa, Taupiri Maunga, Te Putu Street, historic waka landing, Bob Byrne Memorial Park and sports field.
- 5 Create gateway markers into Taupiri.

Enhancing the pedestrian experience

- 6 Great South Road Improvements:
 - Create more pedestrian connections with additional crossings including existing bus stops.
 - Short term tactical urbanism at existing pedestrian crossings.
 - Beautify the streetscape with green promenade and provision for active modes.
- 7 Te Putu Street Improvements:
 - Beautify the streetscape.
 - Traffic calming measures.
 - Upgrade pedestrian crossings.
 - Safe access to The Crescent.
 - Provide a pedestrian crossing outside of the childcare facility.
 - Roadway art at Te Putu Street and Great South Road intersection.

Intersection and roundabout upgrade

8. Improve the safety and visibility of Intersections:
 - Gordonton Road and Te Putu Street.
 - Murphy Lane and Te Putu Street.
 - Great South Road and Te Putu Street to connect to Bob Byrne Memorial Park.
 - Greenlane Road and Te Putu Road.
9. Improve the pedestrian safety and visibility of Gordonton Road and Great South Road roundabout (under investigation).



Streetscape beautification



Wayfinding



Te Awa River Ride extension



Protected cycleway on Great South Road



Raised pedestrian crossing



Traffic calming with planted buildouts

Identity

Amenities

1. Investigate the use of Council-owned facilities within Taupiri and consider additional community needs or commercial development that could be accommodated.
2. Celebrate sites of cultural significance and protect wahi tapu sites through a suite of bi-lingual signage, art work trails, cultural expression and storytelling opportunities (Taupiri Mountain, urupaa, historical waka landing site, Taraheke paa, Taupiri Marae, and Te Uapata paa, key transport nodes (i.e. roundabouts).
3. Provide formal viewing areas and storytelling boards for waka landings beside existing carpark/boat ramp. In particular for major Tangi processions from Taurangawewee Marae to the urupaa.
4. Upgrade and provide signage to public toilets.
5. Upgrade bus stops and shelters.
6. New bi-lingual "Welcome to Taupiri" sign.

Maintenance/CPTED/Safety

7. Introduce mirrors, art and wayfinding at Murphy Lane and Greenlane Road underpasses.
8. Provide lighting at the Rugby Field carpark/Murphy Lane.
9. Trim overgrown vegetation at Murphy Lane and Greenlane Road underpass, Te Putu Street and urupaa bridge.
10. Clean up of graffiti at Murphy Lane underpass and along Great South Road.

Other projects

- Identify opportunities and locations for cultural expression and symbolism.
- Upgraded suite of street furniture including rubbish bins, drinking fountains and seating.
- Undertake maintenance and repair of street lights across the township.

Natural Environment

Recreational opportunities

11. Investigate potential locations for playgrounds to serve wider Taupiri (Gordonton Road and Kaimul Road).
12. Upgrade Bob Byrne Memorial Park with nature play and improved connections north and south to the Hopin Stopin Cafe.

Ecological opportunities

13. Improve the resilience to localised flooding through:
 - Increased permeable surfaces and attenuation planting.
 - Riverbank planting.
 - River edge terracing to protect recreation areas next to the river.
14. Increase native tree and fruit trees in town – Urban Ngahere (Forest), to attract native birds into township.
15. Native tree restoration for Taupiri Maunga.
16. Pest and predator management plan on Taupiri Maunga.

Other projects

- Improve native fauna habitat through education/interpretation and restoration of waterways (native fish, eels etc).



Riverside seating



Storytelling and cultural narratives



Underpass



Village feel



Nature play at Bob Byrne Memorial Park



Separated cycleway on Great South Road

Artist Impressions of Key Moves

Amenity upgrades to Bob Byrne Memorial Park



Enhance Te Putu Street pedestrian experience



Implementation

Taupiri

Project	Prioritisation			Complexity		
	Short term 1-3 years	Medium term 3-10 years	Long term 10+ years	Low	Medium	High
CONNECTED COMMUNITIES						
1. Extension of the Te Awa River Ride cycle route to Taupiri with the inclusion of rest stops and viewing areas.			✓			✓
2. Create a clear walking and cycling loop from town centre - Great South Road, Te Putu Street, Onslow Avenue, Gordonton Road and segregating off to Watts Grove to connect to Taupiri paa and urupaa.		✓			✓	
3. Other active mode connections:						
- Upgrade Te Putu Street and bridge.			✓			✓
- Taraheke Paa, Taupiri Marae and Great South Road with a connection over rail (under investigation).			✓			✓
- Investigate pedestrian and cycle overbridge of railway connecting Great South Road to sports fields.			✓			✓
4. Create a wayfinding suite for key destinations including the urupaa, Taupiri Maunga, Te Putu Street, Bob Byrne Memorial Park and sports field.		✓		✓		
5. Create gateway markers into Taupiri.		✓		✓		
6. Great South Road improvements:						
- Create more pedestrian connections with additional crossings including existing bus stops.			✓			✓
- Short term tactical urbanism at existing pedestrian crossings.			✓			✓
- Beautify the streetscape with green promenade and provision for active modes.			✓			✓
7. Te Putu Street improvements:						
- Beautify the streetscape.			✓		✓	✓
- Traffic calming measures.			✓		✓	✓
- Upgrade pedestrian crossings.			✓		✓	✓
- Safe access to The Crescent.			✓		✓	✓
- Provide a pedestrian crossing outside of the childcare facility.			✓		✓	✓
- Roadway art at Te Putu Street and Great South Road intersection.			✓		✓	✓
8. Improve the safety and visibility of intersections:						
- Gordonton Road and Te Putu Street.		✓	✓		✓	
- Murphy Lane and Te Putu Street.			✓			✓
- Great South Road and Te Putu Street to connect to Bob Byrne Memorial Park.			✓			✓
- Greenlane Road and Te Putu Road.		✓	✓	✓		
9. Improve the pedestrian safety and visibility of Gordonton Road and Great South Road roundabout (under investigation).			✓		✓	✓
IDENTITY						
2. Celebrate sites of cultural significance and protect waahi tapu sites through a suite of bi-lingual signage, art work trails, cultural expression and storytelling opportunities (Taupiri Mountain, urupaa, historical waka landing site, Taraheke paa, Taupiri Marae, and Te Uapata paa).	✓				✓	
3. Provide formal viewing areas and storytelling boards for waka landings beside existing carpark/boat ramp. In particular for major Tangi processions from Tuurangawaewae Marae to the urupaa.	✓				✓	
5. Upgrade bus stops and shelters.		✓	✓	✓		
6. New bi-lingual "Welcome to Taupiri" sign.	✓			✓		
Other projects						
- Identify opportunities and locations for cultural expression and symbolism.		✓			✓	

Taupiri

Project	Prioritisation			Complexity		
	Short term 1-3 years	Medium term 3-10 years	Long term 10+ years	Low	Medium	High
NATURAL ENVIRONMENT						
13. Improve the resilience to localised flooding through:						
· Increased permeable surfaces and attenuation planting.	✓	✓	✓			✓
· Riverbank planting.	✓	✓	✓			✓
· River edge terracing to protect recreation areas next to the river.	✓	✓	✓			✓
14. Increase native tree and fruit trees in town – Urban Ngahere (Forest), to attract native birds into township.	✓			✓		
BUSINESS AS USUAL						
7. Introduce mirrors, art and wayfinding at Murphy Lane and Greenlane Road underpasses.	✓			✓		
8. Provide lighting at the Rugby Field carpark/Murphy Lane.	✓			✓		



View of Taupiri Maunga and Church

What will this Plan cost to implement?

- This Plan is a 30 year time frame 2024-2054 so will cover many LTP cycles
- Some of the projects do have a substantive cost associated to them (3 million dollar intersection, 21 million in Stormwater Infrastructure)
- Each project needs to be weighed up and considered against priority for funding in each LTP
- Some projects are already funded in our current LTP
- Some projects have been considered and are proposed to be included in the next LTP
- Many of the projects are essential projects to cater for the growth or meet our current level of service requirements
- Some projects are 'nice to have', that may mean the community chooses other priorities due to affordability
- Projects will be funded by (or a combination of);
 - Developer led (assets vested to council)
 - Developer funded (DC's)
 - General rate (level of service and renewal components)
 - Community led/private funding



Way Forward



	Milestones
Catch up with Ward/Maori Councillors	11 April 2024
Ngaaruawaahia Community Board Meeting	17 April 2024
ELT Update	18 April 2024
Taupiri Community Board Meeting	22 April 2024
Update to Reference Group (email)	24 April 2024
Councillor Workshop (online)	29 April 2024
Draft report for P&S Committee	30 April 2024
P&S Committee meeting	13 May 2024
Draft out for consultation	15 May 2024
- Directly affected Landowner notification – land use change, Road closures, etc.	
Consultation closes (4 weeks)	12 June 2024
Feedback analysis (2 Weeks)	13 June 2024
P&S Committee meeting Plan Adoption	5 August 2024

Waikato District Council

Thank you