

- 3 SPRING CLEAN YOUR SECTION
- 4 HOME IS WAIKATO DISTRICT
- 7 WAIKATO GOES DIGITAL

All roads lead to *our communities*

The first sod has just been turned on the Huntly section of the Waikato Expressway only 18 months after the Ngaruawahia section opened, diverting traffic away from the town centre.

So what effect, if any, has the Expressway had on Ngaruawahia and what advice would locals share with their Huntly neighbours?

Peter Ayson has a unique insight into the community.

He's lived in Ngaruawahia for "18 plus years" and currently works for a local real estate agent. He's confident that, like Ngaruawahia, Huntly will thrive.

"The reasons people move here now are pretty much the same as they were back then. The price of lifestyle blocks was far better value than many other areas then and we still have affordable housing. But this is rapidly changing as more and more people from Hamilton purchase in Ngaruawahia and North Waikato/ Auckland folk are creating a surge in Huntly. They're buying this way because of our central location."

So what's your sales pitch?

"Both towns have most of the services you need from banks to food outlets, sporting groups and medical services, if you need anything else it's only 12 minutes to The Base."

And for people who like the odd trip to the big city? "It's getting easy and quicker to get onto the motorway north. People love the new Expressway and are saying positive things about it."

Tracey Oakes agrees.

Born and bred in Ngaruawahia "a number of years ago" Tracey's worked at Anexa FVC Veterinary Services on the old State Highway One (SH1) since 2001. She feels diverting heavy traffic to the Expressway has been good for business and improved road safety.

"Parking was always an issue especially when customers had two cats to carry in. They parked at the supermarket because trucks took up the spaces. Now they can pull up out the front – that's increased our drop-in business too. We used to have two or three near crashes outside each week, now we might have one or two a month. It's definitely much safer."



There's a great community feeling



Giving leaders of tomorrow a voice today

Mayor's message

As one of the few districts experiencing growth, we are also fortunate to be home to a large number of young people. Some 13,000 people in the district are aged between 10 and 24 years. Our youth are our future and as such they are a significant stakeholder in what we decide and do – both now and in the future.

As a Council (and as adults in general) often we might feel pressured to have “all the answers” that “kids don’t know what they want” (especially from Council) and that we should show the way and decide. Sometimes that can work well, but if we stop and reflect maybe it is us – adults and Council – who “don’t know” what our young people want of us and that maybe we should simply ask.

Youth’s voice is important. It brings energy, innovation and skills adults don’t have. It’s a perspective on the world currently lived in and ultimately inherited.

Council wants to tap into this. We want to connect, engage and interact more meaningfully with our young people. We want to hear their voice, work with them, connect them meaningfully to their communities, get their input, give them opportunities and a real, tangible part in our district’s future.

My message to our young people is that on this one we don’t have all the answers. As a first step, we do have a plan which Sam Dockary, who is our Youth Engagement Advisor and known to many of you, helped put together. But we could do with your help too.

We want pride in this place we call home and to put the plan to work. We want leaders and followers, ‘ideas’ people and doers, innovators, skills and solutions.

Contact me, Sam or one of the Huntly, Ngaruawahia or Te Kauwhata ward councillors if you want to get on board, be part of this and make your voice heard.



Allan Sanson Mayor, Waikato District Council
mayor@waidc.govt.nz



He aha te mea nui o te ao? He tangata.
He tangata. He tangata.

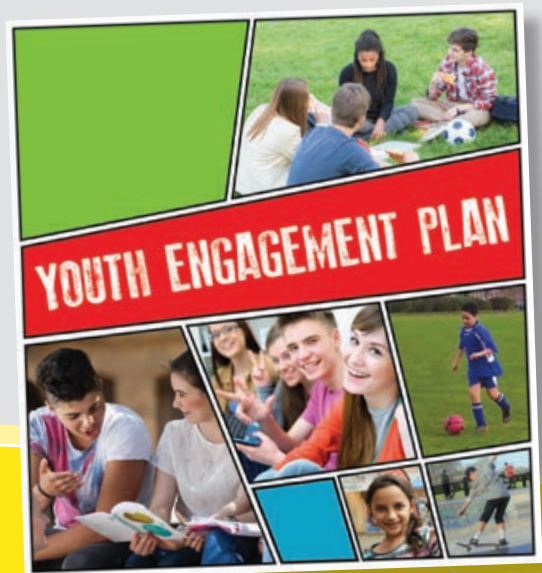
What is the most important thing in the world? It is people. It is people. It is people.

In 2013 the Ministries of Social Development, Justice, Education and Health and New Zealand Police launched the Waikato Social Sector Trial in Waikato district. The objective – to improve outcomes for youth (12 to 18 years) in Huntly, Ngaruawahia, Raglan, Te Kauwhata and Tuakau.

With over 13,000 youth in our district – a sixth of the total population – we saw this as a prime opportunity to give youth a voice. And even though they’re too young to pay rates and many can’t vote, they have valuable information on issues relevant to youth, who are the future leaders of our communities.

So in partnership with the Ngaruawahia and Huntly community boards, Te Kauwhata Community Committee and various youth groups, we developed the Youth Engagement Plan (YEP). It’s a guide to help young people have a voice in their community while becoming more youth-focused. That could be by including young people in our conversations or offering them a platform to air their views. It’s also about helping them acquire skills in our district and encouraging them to look for long-term opportunities to remain a member of the community.

Council adopted the plan earlier this month and because the YEP focuses on how Council, community boards and community committees can work together on giving youth a say in local decision-making, we need everyone to get on board. Once the Ngaruawahia and Huntly community boards and Te Kauwhata Community Committee sign it off, we’ll come back to you with the next steps.



Spring clean your section!

The frosts and freezing temperatures are nearly over but has winter's chill left your section and garden in need of a clean-up?

Overgrown and untidy sections are the cause for over 100 complaints to Council each year. They're not just unsightly, they're a hazard for a number of reasons:

- Unkempt vegetation encourages flies, mosquitoes and other insects.
- Combustible materials can be a fire hazard.
- During summer, long dry grass poses a fire risk.

If that's not bad enough, there's also the issue of vermin. If your section is overgrown you could be sharing your home with a number of unwanted critters.

If it's time to clean up your yard and wage war against rats, mice and other unwanted pests, here's some tips:

- Remove weeds, overgrown grass and other makeshift hiding places for small visitors.
- Set bait and traps to control rodents.
- Remove all rubbish and store in secure containers.
- Don't leave rubbish bags out overnight and keep your property clear of food scraps.

Concerned about an overgrown property or rodent infestation? Contact your Environmental Health team on 0800 492 452.

Did you know you're responsible for maintaining the grassed area in front of your property?

We spray this part of the roadside, the berm, to ensure road drainage systems are kept clear and operational. But we rely on you to mow the berm and maintain any overhanging vegetation from your property.

Trees and flowers are great, but footpaths are for people. Overhanging vegetation makes it unsafe for pedestrians and restricts visibility for motorists; don't let vegetation on your boundary grow onto the footpath.

By the way, if your berms aren't maintained and pose a safety risk, we'll need to clear them. The cost for this is funded from your rates.

Make sure our berms are safe:

- Planting new vegetation? You need to maintain it, so choose plants that are going to work best for you.
- Moving into a new property? Check where your boundaries are, you're responsible for all vegetation inside them.
- Think you have plants on your property that are a pest? Visit www.waikatoregion.govt.nz and view the Waikato Regional Pest Management Plan.

Home is Waikato District

This year each edition of Link will feature different communities in our district. Let's take a visit to Ngaruawahia and Huntly.

HUNTLY – the centre of the universe with everything on offer for young & old

Enjoy scenic walks around Lake Hakanoa or the Green Cathedral Gardens. Visit Lake Puketirini for waka ama competitions and one of the highest-qualified deep sea dive schools in New Zealand.

Love engines? We've got the best stock-car events at Huntly Speedway or perhaps visit the coal mining museum and steam train rides for a touch of history. Afterwards, try one of our many multi-cultural eateries.

Care and education services for all ages – a birthing unit, Kimihia Home and Hospital (a community-owned charitable trust), the Wananga, two high schools, four primary schools, kindies and daycare centres providing educational needs. Just a few of the features at the heart of the mighty Waikato district.



Shelley Lynch
Huntly Ward Councillor
shelley.lynch@waikato.govt.nz



Graeme Tait
Huntly Ward Councillor
graeme.tait@waikato.govt.nz



Stay connected – hop on the Northern Connector



Connecting Huntly, Taupiri, Ngaruawahia, The Base and Hamilton 365 days a year.

With 15 return trips a day Monday to Friday and five services a day on weekends and public holidays, there's plenty of opportunity to get on board. Use the bus to get to work or school, travel with us to appointments, go shopping or visit family and friends. Whatever the reason, you'll travel in comfort in fully accessible, air-conditioned buses. BUSIT! card adult fares range from \$1.70 to \$4.40.

Find out more – visit www.busit.co.nz or call 0800 4 BUSLINE.

Rescue services receive additional funds

Good news for the Huntly Volunteer Fire Brigade which will receive a one-off payment for the 2015/16 financial year of \$15,000. The funds will be used for ongoing maintenance of the emergency services rescue boat and equipment.

The boat is used on a regular basis for search and rescue operations on Waikato River as well as lakes in and around the district.

NGARUAWAHIA WARD

Plenty on offer for everyone

Draw a large circle around the township of Ngaruawahia and you'll embrace the villages of Hopuhopu, Taupiri, Horotiu and Glen Massey.

Encompassing farms, lifestyle blocks, homes, schools, murals, artwork, golf courses, sports facilities, parks and a heritage trail, our community offers something for everyone.

And there's more. Flowing through the middle, the Waikato and Waipa rivers meet at the recreation reserve 'The Point'. The Hakarimata Ranges and Taupiri Mountain provide scenic walks and native fauna and flora for our enjoyment. The Te Awa cycleway beckons us to start or end our walk or ride opposite Turangawaewae Marae which nestles proudly along the banks of the Waikato River.



Janet Gibb
Ngaruawahia Ward Councillor
janet.gibb@waikato.govt.nz

Through the looking glass

Kia ora tatou. Council's adoption of the Long Term Plan reinforces the commitment we've made to achieve many goals including those which stimulated submissions from residents.

Now we turn our focus to the implementation of the Ngaruawahia Structure Plan which sets the direction for development of land, business (Horotiu Industrial Park), and education (Endowment College) in our community. Heritage and history forums are also seeking information and direction to help our township create its own integrity as a destination.

We are already recognised for our unique physical assets with international cultural acclaim including, but not limited to, the Hakarimata track and our piece of the national cycleway, Te Awa The Great NZ River Ride. Completion of the new Expressway will allow us to celebrate in our streets.



Moera Solomon
Ngaruawahia Ward Councillor
moera.solomon@waikato.govt.nz



Ngaruawahia mural

Thanks to the Ngaruawahia Community Board and the Ngaruawahia Community House, the bakery wall in the New World carpark was given a new lease of life earlier this year by artist Jeremy Shirley.

The mural progresses from morning to evening, left to right, showing a fantail, a kereru, a ruhi and the Hakarimata Ranges.

How Ngaruawahia got its name

One version of the events behind the naming of Ngaruawahia stems from a great feast in the 17th century.

Ngaere (the son of a Waikato chief) and Heke i te Rangi (the daughter of a Ngati Maniapoto chief) eloped and settled at Ngaruawahia, causing a rift between their tribes.

When their first child was born, Ngati Maniapoto was invited to the celebration in an attempt to reconcile the tribes.

After everyone had been welcomed, Ngaere's father held up the baby and named him Te Mana o te Rangi in honour of the reconciliation with Ngati Maniapoto.

Ngaere then arose and called out "Wahia nga rua" – "let the food pits be opened," and from those words, Ngaruawahia was named.

Source: Archaeological report on Puke-I – Aahua compiled for Waikato District Council by Kaumaatua, Tame Pokaia.



Sign confusion to be removed

Those of you with keen eyes may have noticed the 'Civil Defence' signs spread across the district. The signs point out where to go in a significant emergency if you need assistance and information.

Previously, all public schools and many community halls were registered as Civil Defence centres and have been signposted for the community. This means we now have over 100 signs across the district pointing to facilities that can't all cope with an influx of people in an emergency.

During a disaster not all Civil Defence centres will be open. The location and type of event will determine where people should go for support.

For these reasons and to avoid confusion in emergencies, we're taking down the Civil Defence signs.

We'll still be running Civil Defence centres but if there is an emergency you'll receive official information by:

- listening to your local radio station
- visiting www.waikatodistrict.govt.nz
- or following www.facebook.com/WaikatoDistrictCouncil

Civil Defence signs across the district will be removed

Ngaruawahia welcomes **Red Cross**

The scene that greets the Civil Defence response teams is one of utter carnage

A car is wedged under a train barrier arm and there's a woman on the ground severely injured. Inside the wrecked car is a distressed family – the father's leg is trapped, the mother has an exposed compound femoral fracture and the teenage girls in the back seat are crying and pleading for help.

This is just an example of a realistic scenario Red Cross emergency teams respond to as part of their training.

From 11 to 13 September, Red Cross teams from around the North Island will be converging on Ngaruawahia for their annual training exercise.

Faced with a real-time emergency scenario, volunteers will face mass casualties, first-aid and pre-hospital emergency care, shelter management, community outreach and rescue missions.

Volunteers will be spread throughout different locations in Ngaruawahia and will be supported by the Fire Service, St John and Waikato District Council Civil Defence team members.

While you're out and about you may see people in red overalls, a large number of fire engines or actors with make-up replicating injuries. Please don't be alarmed, this is a training exercise and everything is scenario based.

We'll be updating www.facebook.com/WaikatoDistrictCouncil with photos and news as the exercise is underway so be sure to follow us to find out more.



*New Zealand Red Cross
emergency management
training in Rotorua 2014*

Photo credit: Graeme Murray



WAIKATO goes digital

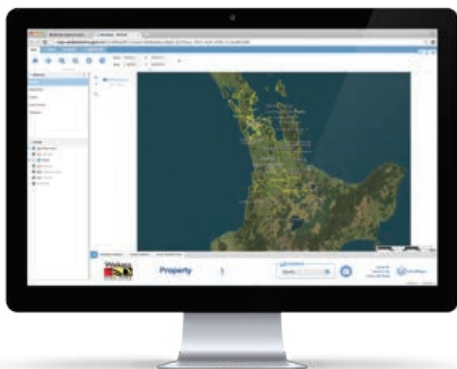
Now all of Waikato district can be seen online via one public map viewer.

We've released our new online map viewer 'Maps Online' giving you the ability to view and search for:

- a property
- property and road boundaries
- property and rating information
- District Plan information
- utilities information (water, wastewater and stormwater)
- aerial photography.

The online tool has many features familiar to people who use Google Maps or Google Earth. It also offers the ability to measure distances, annotate or make notes and add text and shapes to maps.

Explore Waikato district through Maps Online at www.waikatodistrict.govt.nz



Sunset Beach users — keep yourselves safe

Agencies monitoring erosion at Sunset Beach (Port Waikato) say wild weather and the volatile nature of the beach environment have increased the risk to users.

Tim Harty, Council's Service Delivery General Manager says any beach environment is an extremely difficult situation to manage.

"We're assessing the situation for short and long-term solutions in partnership with all stakeholders but in the meantime we need the public to take responsibility for their safety. There are risks from overhangs created by erosion but the risk increases when people stand on, or near, this area. It's a simple message – please stay behind the fence."

"With every tide there is more or less debris on the beach, both natural and man-made, with the ocean adding to and removing items on the beach from tide to tide. We continue to observe the situation and have ensured the appropriate fencing and signage is in place to warn of the dangers in front of the carpark."

"While removing the debris after every tide is neither cost-effective nor feasible, the plan is to have the beach cleared of major debris prior to the summer season."

"We're continuing to work with the community to provide information on the best and safest access routes enabling us to enjoy this fabulous asset in the district."

STAY INFORMED

Email your contact details to sunset@waikato.govt.nz to be included on our database for regular updates including community workshops.

If a dog's on its own, leave it alone!

Our animal control officers and their canine friends are ready to visit schools across the district to deliver an important message – if a dog's on its own, leave it alone.

We're delivering a new Dogsmart Education Programme to help children understand:

- the role of an animal control officer
- pet care
- pet health and hygiene
- behaviour around dogs (bite prevention and entering properties safely).

"It's only natural for a child to see a cute dog waiting for its owner outside a shop and want to pat it. Our goal is to explain the possible dangers and teach children how to keep safe," says Animal Control Team Leader, Megan May.

The programme is fun and interactive and uses real dogs, as well as Angus the mascot to demonstrate messages.

Students are taught how and when to approach dogs and avoid danger when in a situation with a threatening dog.

While the programme is aimed at primary-aged children, the Animal Control team can deliver a tailored presentation to any community group.

"On average, every day in New Zealand two people will get bitten by a dog. We want to prevent as many of these incidents as possible by educating people about how to approach dogs safely."

Ring 0800 492 452 to talk to our Animal Control team about visiting your school or community group.

If the dog's on its own...
leave it alone!





Getting from A to B

The Waikato Expressway Project began in January 2009 with a scheduled completion date of December 2019. The new 46.3km road is being built in seven stages and has an estimated cost of \$100+ million.

Stay updated on the Waikato Expressway Project visit www.nzta.govt.nz/waikato-expressway or like their Facebook page www.facebook.com/waikatoexpressway

Koroneihana 2015

Koroneihana has a special place and importance in the tribal calendars of iwi around the country.

This week-long celebration of the Maaori King, Tuheitia's Koroneihana (Coronation) commemorates Tuheitia taking up the position as the leader of the King Movement.

Tribes from all over Aotearoa come to Turangawaewae to pay tribute to the King and his iwi, Waikato-Tainui and to show their allegiance and support.

In recognition of this important hui in the Waikato-Tainui tribal calendar, Waikato District Council provides a traffic management plan to ensure the safety of everyone who attends.

Got a question about Council business?
Email communications@waikato.govt.nz

Ngaa Mihi – How do I say hello?

For a language to thrive it needs to be used regularly and meaningfully. This is especially so with the Maaori language, as it's one of the three recognised languages of New Zealand.

Greeting others is important. It is an opportunity to show respect through the language used.

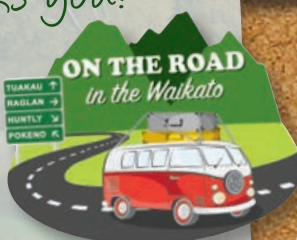
So how do you say hello in Maaori?

- Hi – *Kia ora*
- Hello (to one person) – *Teena koe*
- Hello (to two people) – *Teena koorua*
- Hello (to three or more people) – *Teena koutou*

District Plan thanks you!

Thank you to everyone who joined us 'On the road in the Waikato' by attending one of our 18 District Plan Review drop-in sessions. We met lots of great people, had plenty of interesting discussions and now have a huge amount of feedback to sort through!

We'll need your input again once we have completed the draft District Plan based on your initial feedback in the first half of next year, so keep following the journey at www.waikatodistrict.govt.nz/districtplanreview



Get ready for inorganic refuse collections

Planning is underway for the 2015 inorganic refuse collection. Just like last year, collections will be completed in line with your normal rubbish collection day and they are likely to be in late November. We'll provide detailed information closer to the date through our website, Facebook page and posters in your community.

Our next edition of Link will be distributed from 27 to 30 October. If you don't receive your Link during this period email communications@waikato.govt.nz with your address details so we can look into the non-delivery. Please note if you have 'No Junk Mail' on your mailbox we can't deliver the newsletter.