



Policy and Regulatory Meeting - November 2017

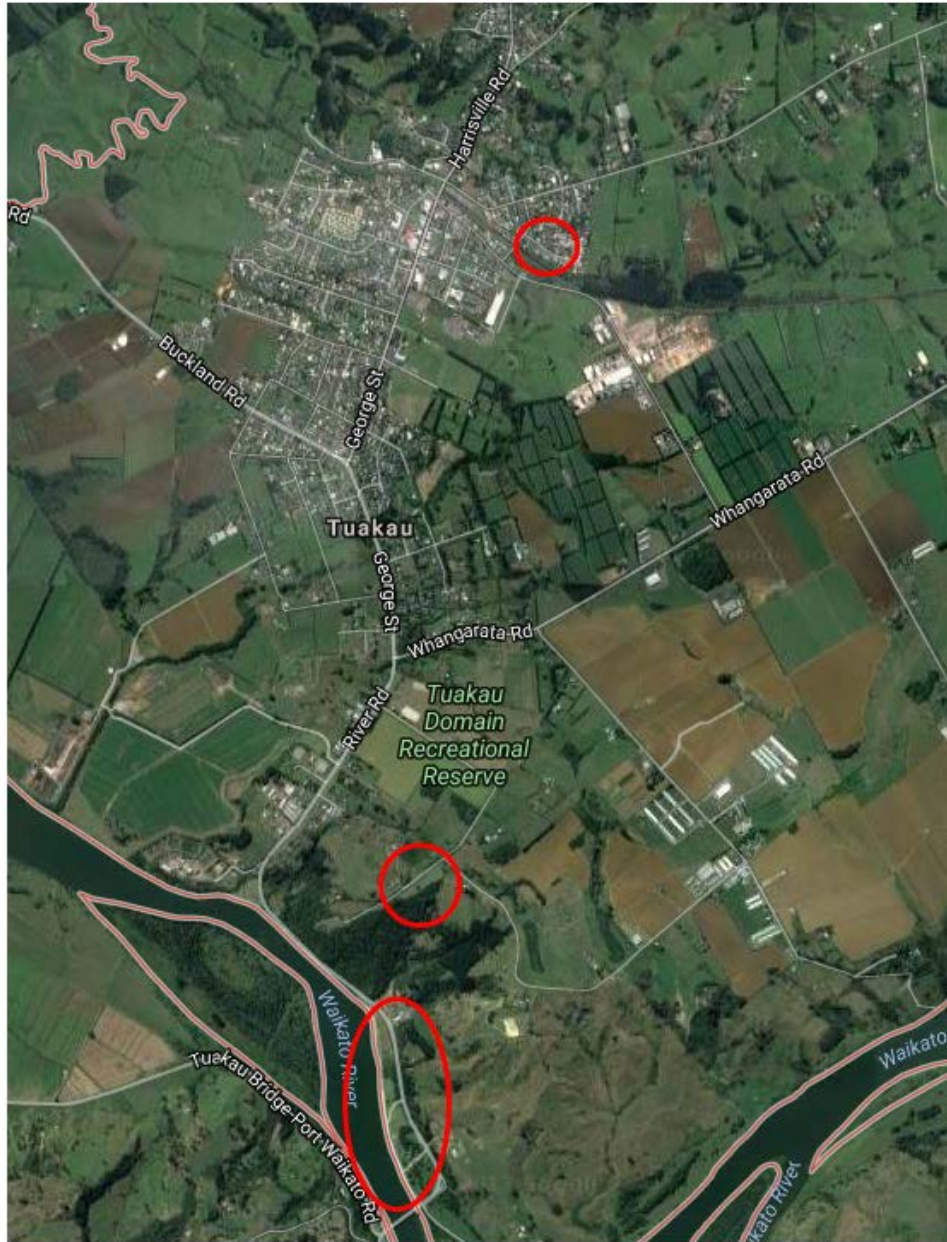
Amendment of Schedule One of the Dog Control Bylaw 2015

Introduction

- Background to Bylaw review
- Need for additional engagement
- Consultation process followed
- Assessment of feedback
- Options available

Background

- Consultation occurred 2014/15
- Exclusion of Centennial Park on draft document



Background

- Minimal Feedback
- Dog Control Bylaw 2015

Need for Additional Engagement

- Lack of clarity
- Feedback from members of the public

Section 8.0 Dog Control Bylaw 2015

The Council may from time to time by resolution designate certain areas as exercise areas

- Engagement approved

Engagement Process

- Tuakau dog owners - letters
- Residents adjacent to parks - letters
- Display at Tuakau Office
- Public Notices
- Social Media

Staff assessment and recommendation

- Discussions with Parks and Facilities staff
- Concerns of members of the public
- Fencing implications
 - Cost
 - Constraint of children
 - Detract from the beauty and use of the park
- Plans for additional recreational areas

Options available

- Include both parks as off leash areas
- Consider concerns raised
- Introduce measures to allow both activities to occur at Centennial Park
- Determine the need for an additional site when land is obtained.

Centennial Park



Centennial Park



Centennial Park



Centennial Park



Les Batkin Reserve



Te Kowhai

