

# Appendix D – Landscape Masterplan





# TAMAHERE COUNTRY CLUB

## STAGE 6 AND EXTENSION

JULY 2023







Boffa Miskell is proudly a  
Toitū net carbonzero certified consultancy

DOCUMENT QUALITY ASSURANCE

BIBLIOGRAPHIC REFERENCE FOR CITATION:

Boffa Miskell, 2023. TAMAHERE COUNTRY CLUB, STAGE 6 AND EXTENSION *MASTERPLAN*. Report by Boffa Miskell Limited for Sanderson Group.

PREPARED BY:	Tim Utteridge Landscape Architect Boffa Miskell Ltd	
REVIEWED BY:	Jo Soanes Landscape Architect Boffa Miskell Ltd	
STATUS:	Version: 2	Issue date: July, 2023

File ref: BM230149\_Final\_Extension\_Masterplan\_Updated

Cover photograph: TCC Main Entrance, © BOFFA MISKELL, 2021



# CONTENTS

EXISTING DEVELOPMENT	4
OVERALL MASTERPLAN	5
STAGE 6 AND EXTENSION MASTERPLAN	6
TYPICAL ROAD CROSS-SECTIONS	7
SPINE ROAD	7
TYPICAL ROAD CROSS-SECTIONS	8
LANEWAYS	8
TYPICAL BOUNDARY TREATMENTS CROSS-SECTIONS	9
SOUTHERN BOUNDARY	9
TYPICAL BOUNDARY TREATMENTS CROSS-SECTIONS	10
SOUTHERN BOUNDARY	10
TYPICAL BOUNDARY TREATMENTS CROSS-SECTIONS	11
WESTERN BOUNDARY - BUND	11
ROAD HIERARCHY AND PEDESTRIAN MOVEMENT	12
BOUNDARY & ENTRY TREATMENTS	13
COMMON SPACES	14
STREET TREE & PLANTING STRATEGY	15
PLANTING PALETTE	16



EXISTING DEVELOPMENT





# OVERALL MASTERPLAN

The Masterplan strategy aims to work with the existing context of the site, including the existing surrounding residential development and open space network.

The Masterplan includes a central ‘spine’ with small scaled side streets/laneways giving access to proposed independent living villas to the east and west of the site and leading to the common facilities located across the site, including the proposed health spa on the extension site and the existing facilities on the existing TCC site (Clubhouse, bowling green croquet lawn, clubrooms etc.)

Overall the masterplan is designed to have a clear and legible structure with good on-site amenity for older residents, generous tree planting and a limited off site presence in the landscape.

Community spaces will include a clubhouse and a range of indoor and outdoor amenities such as a tennis court, a meandering footpath and rose garden which will provide residents with active lifestyle choices in a vibrant rural landscape setting.

KEY

- A Main Site Entrances
- B Club House and Visitor Car parking
- C Bowls Lawn/Putting Green
- D Open Space/Retention of Existing Mature Oak Trees
- E Meandering Walkways
- F 2.5m high planted bund
- G Post and Rail Boundary Fence
- H Campervan Parking
- I Wastewater Storage Plant
- J Tennis Court
- K Amenity Croquet Lawn
- L Lake & Water Feature
- M Lake House, Wellness Centre / Private Function Area
- N Outdoor Seating and Garden Party Area
- O 1.8m high Acoustic Fence
- P 3m high planted bund
- Q Orchard
- R Gardeners Shed
- S Mens Shed
- T Rose Garden
- U Club House
- V Driving Range
- W Spine Road
- X Care Facility
- Y Planted Swale
- Z Health Spa
- 1 Protected ‘She-Oak’ Tree
- 2 ‘Native Bush’ Buffer Planting
- 3 Existing Trees To Remain
- 4 Outdoor Gym

Figure 1: Masterplan showing stages 1-4. Current stage shown in colour.





# STAGE 6 AND EXTENSION MASTERPLAN

- KEY
- A Main Site Entrances
  - B Visitor Car Parking
  - E Meandering Walkways
  - G Post and Rail Boundary Fence
  - W Spine Road
  - Z Health Spa
  - 1. Protected 'She-Oak' Tree to Remain
  - 2. 'Native Bush' Buffer Planting
  - 3. Existing Trees to Remain
  - 4. Outdoor Gym





# TYPICAL ROAD CROSS-SECTIONS

## SPINE ROAD

Key design features include:

- » 1.5m Footpath
- » Planted medians with flowering trees
- » Main connector of the country club with all communal facilities



Villa Gardens



*Prunus yedoensis*  
'Awanui'



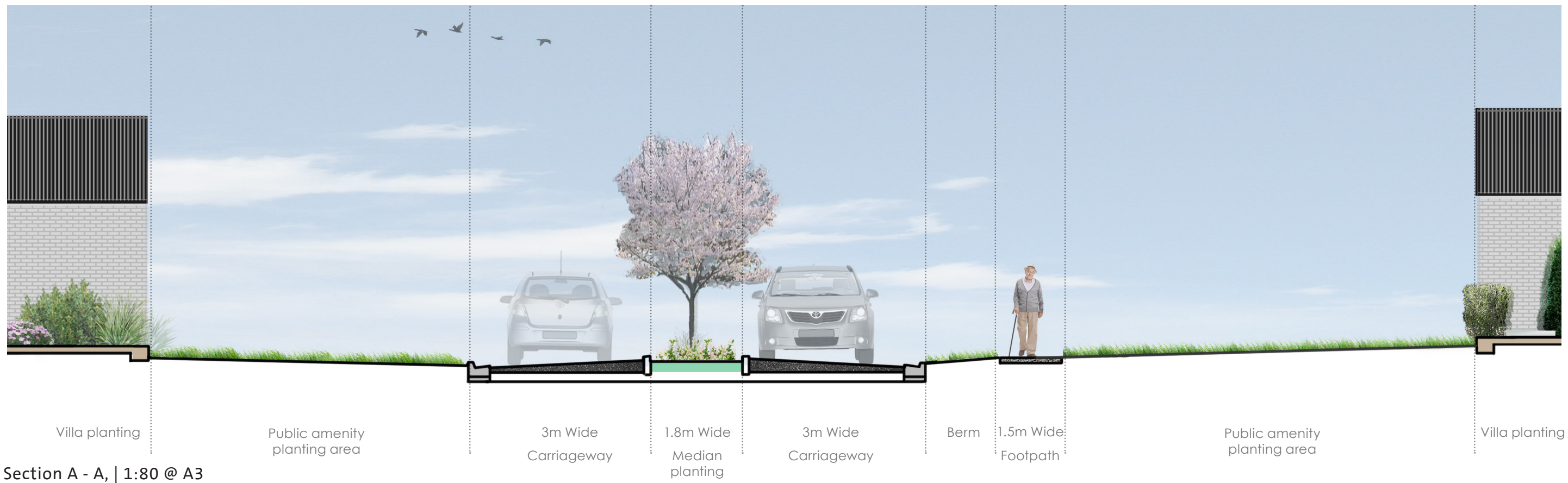
*Libertia grandiflora*  
(median planting)



Footpath



Villa Gardens





# TYPICAL ROAD CROSS-SECTIONS

## LANEWAYS

Key design features include:

- » 1.5m Footpath
- » Provides access to the individual residential villas
- » Green Open Space
- » Varied Boundary offsets



Footpath & planting



*Prunus yedoensis*  
'Awanui'



*Acer buergerianum*



*Libertia grandiflora*  
(median planting)



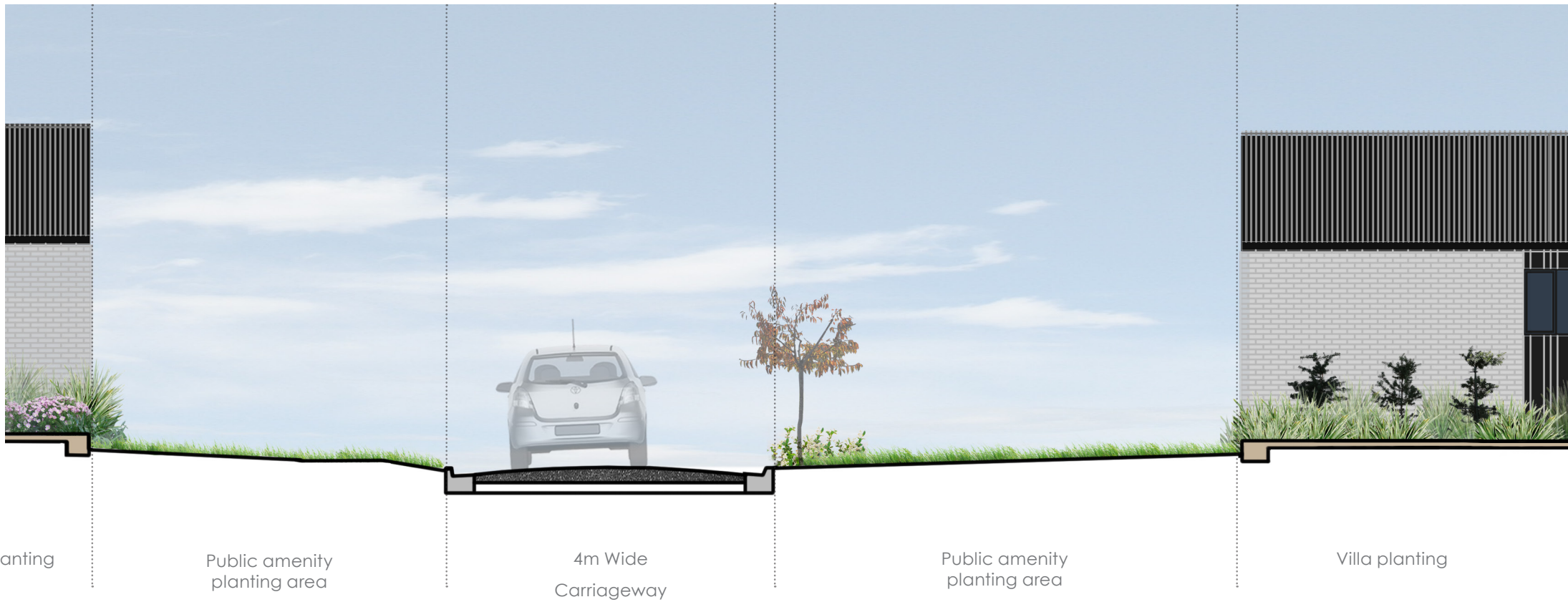
*Cercis canadensis*  
'Forest Pansy'



Flower picking garden



*Corokia* 'Geentys Green'  
(hedge)



Villa planting

Public amenity  
planting area

4m Wide  
Carriageway

Public amenity  
planting area

Villa planting

Section B - B, | 1:80 @ A3



# TYPICAL BOUNDARY TREATMENTS CROSS-SECTIONS

## SOUTHERN BOUNDARY

Key design features include:

- » Visual screening and amenity
- » 1.3 m high post and rail fence along boundary line
- » 25m Boundary Setback of Villas within Tamahere Country Club
- » Native planting buffer strip with meandering path along the boundary of the South Western Corner of the site.



Villa Gardens



Footpath



Native Bush Planting

Section C - C, | 1:100 @ A3





# TYPICAL BOUNDARY TREATMENTS CROSS-SECTIONS

## SOUTHERN BOUNDARY

Key design features include:

- » Visual screening and amenity
- » 1.3 m high post and rail fence along boundary line
- » Boundary setback
- » Planted buffer strip



Griselinia littoralis  
Hedge



Footpath



Villa Gardens

Section D - D, | 1:100 @ A3





# TYPICAL BOUNDARY TREATMENTS CROSS-SECTIONS

## WESTERN BOUNDARY - BUND

Earth bund key design features include:

- » 3 m high planted earth bund
- » Noise attenuation
- » Visual screening and amenity
- » Planted in native plantings and exotics
- » Open rural styled timber post and rail fencing



Post and rail fence



*Sophora microphylla*



Bund planting



Footpath



*Fagus sylvatica*



Grassed open space area



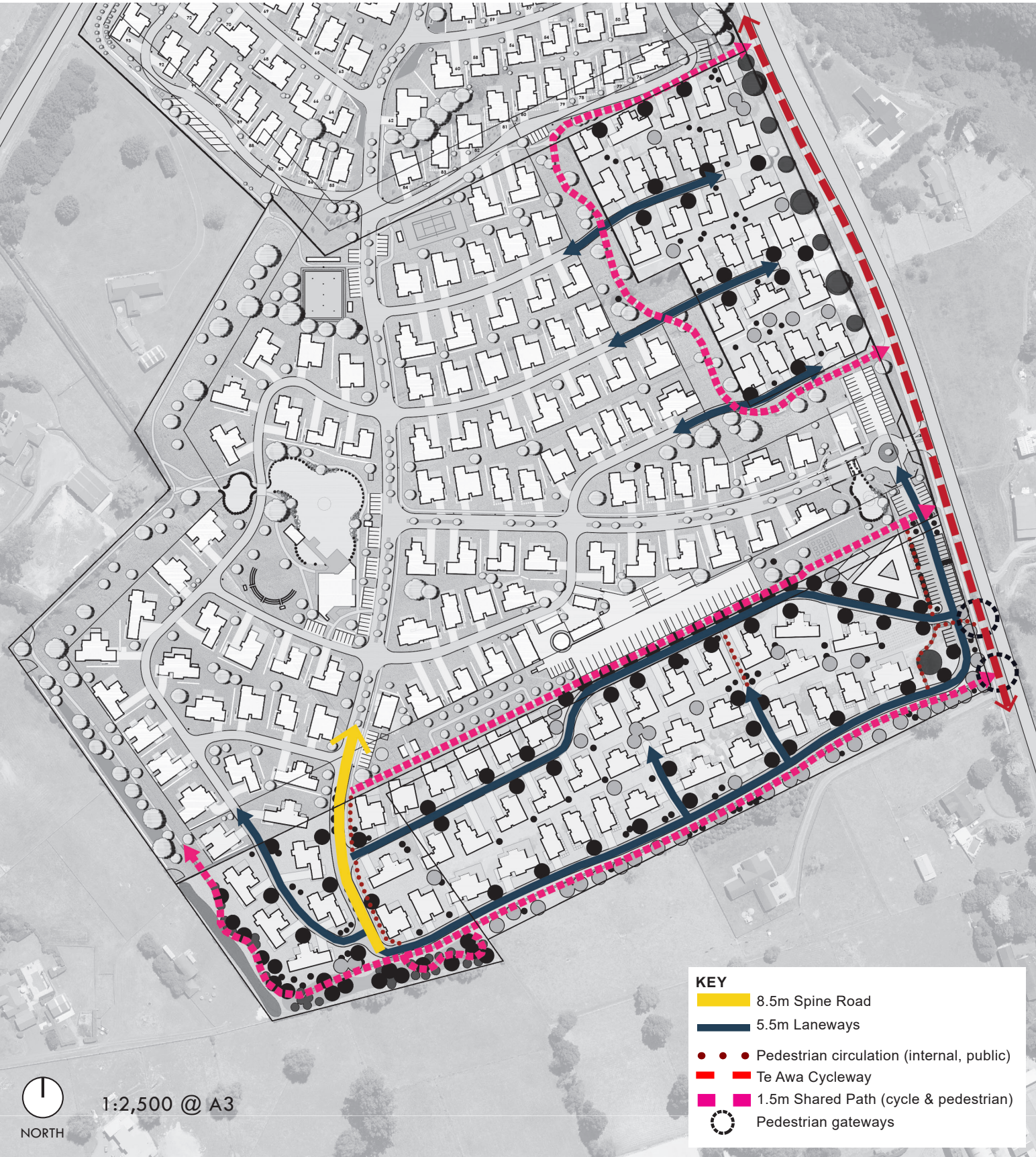
Villa Gardens

Section E - E, | 1:80





# ROAD HIERARCHY AND PEDESTRIAN MOVEMENT



## VEHICULAR AND PEDESTRIAN MODE EXAMPLES



VEHICULAR & PEDESTRIAN ENTRANCES  
EXAMPLE

LANE WAYS



SPINE ROAD



SHARED PATHWAYS



INTERNAL CIRCULATION



# BOUNDARY & ENTRY TREATMENTS



The periphery of the Tamahere Country Club will have a combination of fencing treatments in response to the edge context - main entrance, public roads, rural, reserve and common residential boundaries.

## BOUNDARY TREATMENT EXAMPLES



■ ■ RURAL BOUNDARY TREATMENT EXAMPLE - 1.3M POST AND RAIL FENCING

NOTE: FENCING AS ABOVE UNLESS ALTERNATIVE DESIGN IS AGREED WITH ADJACENT LANDOWNER



# COMMON SPACES



## COMMON SPACES EXAMPLES

### SEATING AREAS



### RECREATION AND AMENITY



### HEALTH SPA





STREET TREE & PLANTING STRATEGY



STREET TREE & PLANTING EXAMPLES



Spine Road Planting



Existing She-Oak



Camelia Hedging



Internal - Health Spa planting



Setback Boundary Planting



Bund Planting



Internal - Villa Planting



Native Screen Planting



PLANTING PALETTE

Spine Road Planting



*Acer buergerianum*



*Libertia grandiflora*



*Prunus yedoensis* 'Awanui'

Main Entrance Planting



*Quercus robur*

Planted Bund



*Phormium tenax*



*Sophora microphylla*

Native Screen Planting



*Cordyline australis*



*Phormium tenax*



*Plagianthus regius*



*Pseudopanax arboreus*



*Sophora microphylla*

Boundary Setback Planting



*Acer buergerianum*



*Fagus sylvatica*



*Griselinia littoralis*



*Prunus yedoensis* 'Awanui'



*Sophora microphylla*



*Quercus palustris*

Internal Planting



*Acer buergerianum*



*Camellia sasanqua* 'Setsugekka'



*Cercis canadensis* 'Forest Pansy'



*Crokia* 'Geentys Green'



*Magnolia grandiflora* 'Little Gem'



*Pyrus calleryana* 'Candelabra'



*Sophora microphylla*



About Boffa Miskell

Boffa Miskell is a leading New Zealand professional services consultancy with offices in Whangarei, Auckland, Hamilton, Tauranga, Wellington, Nelson, Christchurch, Dunedin, and Queenstown. We work with a wide range of local and international private and public sector clients in the areas of planning, urban design, landscape architecture, landscape planning, ecology, biosecurity, cultural advisory, graphics and mapping. Over the past five decades we have built a reputation for professionalism, innovation and excellence. During this time we have been associated with a significant number of projects that have shaped New Zealand's environment.

www.boffamiskell.co.nz

Whangarei	Auckland	Hamilton	Tauranga	Wellington	Nelson	Christchurch	Queenstown	Dunedin
09 358 2526	09 358 2526	07 960 0006	07 571 5511	04 385 9315	03 548 8551	03 366 8891	03 441 1670	03 470 0460