



Pōkeno Community Committee Plan 2024-2026

TABLE OF CONTENTS



01

**A message from your
Community Committee**
Page 2

02

**About community
committees**
Page 3

03

**Our community
outcomes**
Page 4

04

Our vision
Page 5

05

Our priorities
Page 6

06

Map of community area
Page 11

07

**Key amenities and
facilities**
page 12

08

**Community committee
investment**
Page 13

09

**Your community
committee**
Page 14

A message from your Community Committee

Kia ora koutou,

We are proud to present our Pōkeno Community Committee Plan for 2024-2026.

We envisage Pookeno as a vibrant, inclusive community where economic growth and cultural diversity thrive, and we are responsible stewards of our environment, where every resident can enjoy a high quality of life.

We are passionate about fostering a community that prioritises sustainable development, celebrates its rich diversity, and actively engages in protecting our natural resources. We believe that a united community can achieve remarkable progress.

Our goals include:

- To stimulate economic growth through support for local businesses, investment opportunities, and initiatives that promote tourism.
- To create a welcoming environment that celebrates diverse cultures and encourages community involvement in cultural events and activities.
- To enhance our natural environment through education programs, community clean-up initiatives, and partnerships with local environmental groups.
- To promote social connections and inclusivity, ensuring that Pookeno remains a great place to live, work, and play for all residents.

The future of Pookeno looks bright. Together, we will build a sustainable and prosperous Pookeno where everyone has the opportunity to thrive.

Ngaa mihi nui,

The Pōkeno Community Committee



About community committees

Community Committees play an important role in local governance and citizen-led democracy, serving as the primary link between the local community and the Council. We are your representatives at council, and respected connectors into the community.

Our roles are governed by the Local Government Act 2002. Some of the roles specified are:

- The key connector between the community and council.
- Advocate for and represent the interests of our community.
- Consider and report on all matters referred to us by the council, or any other matter of interest to us as a committee.
- Keep track of the services provided by the council in our community.
- Prepare an annual submission to the council for expenditure within our community.
- Engage with organisations and special interest groups within the local community.

Community Committee Plans

Community Committee Plans are developed every three years and outline our key priorities for our elected term. They also indicate how we will work in partnership with locals and mana whenua to achieve the Council's community outcomes.

A key part of the development of our plan is engagement with locals to ensure that our priorities reflect the needs and desires of Pookeno.



Our Community Outcomes



Everything we do is aimed at improving the wellbeing of the people that live, work, and explore the Waikato District. Our Community outcomes are developed under the four wellbeing pillars and describe what we want to achieve for the Waikato District into the future.



Cultural

We celebrate who we are.

We celebrate all cultures. We treasure our diverse communities, and acknowledge our cultural rights and obligations. We honour, understand and implement Te Tiriti o Waitangi and acknowledge the relationship with mana whenua of our district.



Economic

We support local prosperity.

We champion sustainable growth in our local economy. We support local enterprise and encourage innovation and socio-economic prosperity for all, while managing regulatory processes to protect and promote our unique district. We acknowledge our rural and Maaori economies as key contributors to our district's prosperity and sustainability.



Environmental

Our environmental health underpins the health of our people.

We want waterways which are healthy and create connections. We protect and enhance our soils, water and native biodiversity and take care of our taiao (natural environment) for the health and wellbeing of our people, our communities and for future generations.



Social

We have well connected communities.

Our communities are connected, safe, accessible and resilient. We put community wellbeing at the heart of our decisions, and we embrace partnerships to get things done to improve people's lives.



The Pōkeno Community Committee is the go to place where everyone in our community can speak up and make things happen.

Our vision statements:

- We are committed to upholding Te Tiriti o Waitangi by engaging well with mana whenua and holding Te Ao Māori values at the core of our decision-making.
- The views, interests, needs and aspirations of residents are effectively represented.
- We have an open and transparent decision-making process that residents can understand and engage in.
- Our focus is to enhance environmental, cultural, social and economic wellbeing.
- To have an strong relationship with our community as a respected arm of Waikato District Council.
- To strengthen our relationship with council so that the voice of our community is kept well-informed of things happening in our area.

Our priorities

Cultural Wellbeing

We celebrate diversity.

This matters because...

Alongside mana whenua we are kaitiaki of an area with a unique natural environment and significant heritage which make up our unique identity providing a sense of togetherness and belonging. We actively promote and celebrate arts, culture, and heritage by valuing and respecting diversity and fostering inclusion in Pookeno.

Our commitment

- Celebrate and promote our arts, all cultures, and heritage to encourage strength, togetherness and belonging.
- Promote and celebrate language weeks, the Christmas Parade, Diwali, Waitangi Day, Matariki, Chinese New Year and other significant cultural events.
- Hold Te Ao Maori values at the core of our decision-making.
- Continue to build and strengthen our relationship with mana whenua to ensure their input and perspective is heard.
- Co-opt mana whenua representation to provide advice on enhancing cultural wellbeing across Pookeno.
- Promote and celebrate in partnership with mana whenua, our cultural heritage and unique natural environment.

- Work in partnership with our local artists to promote the arts for Pookeno.
- As a Community Committee we will support community-led development with letters of support for our community's priorities identified through the Blueprints and other community aspirations that our community wants to undertake.

Success looks like...

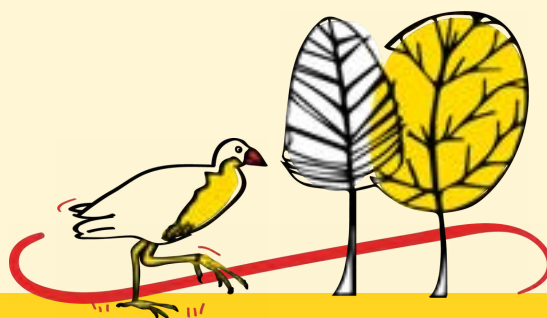
- Regular hui is being held with mana whenua.
- Arts and culturally significant events are celebrated and actively promoted in Pookeno.
- Our cultural heritage and unique natural environment is actively promoted in Pookeno.
- Relationships with local artists has been established.

Environmental Wellbeing

As kaitiaki we have a duty of care to protect, educate and enhance our natural environment.

This matters because...

We have a duty to protect, enhance and preserve our natural environment, including Mount William, the integrity of our waterways, rich biodiversity, significant heritage, now and for future generations.



Our commitment

- Partner with Council, the Waikato Regional Council, mana whenua, the Department of Conservation, and Waka Kotahi to identify the many opportunities for native planting and ecological restoration.
- Hold community days, in partnership with other organisations, to educate and encourage the preservation and enhancement of our natural environment.
- Advocate for the protection of our natural environment and significant heritage.
- Continue to build and strengthen our relationships with our environment groups.
- Support and promote environmental projects and initiatives happening within Pookeno.
- Partner with other organisations to explore training opportunities for youth into environmental career pathways for example the Te Araroa Trail.
- Partner with local environmental businesses and schools to scope opportunities for young people to get involved in environmental projects and initiatives.
- Promote and celebrate environmental events such as Arbor Day.
- Establish a group of local volunteers passionate about protecting and enhancing our natural environment to assist in the education of our community.
- Encourage and support community-led resilience planning.
- As a Community Committee we will support community-led development with letters of support for our

community's priorities identified through the Blueprints and other community aspirations that our community wants to undertake.

Success looks like...

- A meeting with Council, Waikato Regional Council, Department of Conservation, mana whenua, and Waka Kotahi to discuss opportunities for native planting and ecological restoration is held.
- An education day is held with the community to promote the importance of protecting and preserving our natural environment in partnership with others.
- A meeting has been co-ordinated with the Council's Climate Action and Sustainability Teams on opportunities to educate the Pookeno community on what it means to protect and enhance our environment.
- Community Committee members have established a group of passionate individuals within the community to support and assist with environmental initiatives within the community.
- Resilience planning which includes climate mitigation measures within the Pookeno community has been promoted through various channels.
- A meeting has been held with organisations to explore training opportunities for youth into environmental career pathways for example the Te Araroa Trail.



- Meetings have taken place with local environmental businesses and schools to scope opportunities for young people to get involved in environmental projects and initiatives.
- Environmental events such as Arbor Day have been actively promoted by the Community Committee.

Social Wellbeing

Pookeno is a great place to live, work and play.

This matters because...

With a growing community rich in diversity, it is important that we are an inclusive community by fostering and nurturing social cohesion to ensure our community feel connected, safe and welcome.

Our commitment

- Promote and celebrate our diverse community.
- Identify and promote social activities such as, Matariki celebrations, Waitangi Day, and Diwali.
- Promote and celebrate the volunteer organisations that support Pookeno.
- Identify and promote the social services that exist in Pookeno.
- Work in partnership with others on how we welcome the new residents to Pookeno.
- Advocate for walkways and green spaces to enable connectivity within our community.
- Advocate for public transport to enable connection.



- We will promote and advocate for Te Whare Tapa Wha, the four cornerstones of health, physical, spiritual, family and mental alongside mana whenua.
- In partnership with our local Police and others we will advocate for safe spaces within our community.
- Co-opt passionate individuals in its community to enhance the social wellbeing for our community.
- As a Community Committee we will support community-led development with letters of support for our community's priorities identified through the Blueprints and other community aspirations that our community wants to undertake.

Success looks like...

- The Community Committee has actively promoted social activity across its community using multiple communication channels.
- The Community Committee has identified and promoted social services that exist in Pookeno.
- The Community Committee has conducted a stocktake of all social activity within its community.
- Our community will be aware of the different social activities available to them within the Pookeno community.
- Communities will have access to local community facilities.
- A meeting has been held with the local Police around community safety.
- Te Whare Tapa Wha has been activity promoted by the Community Committee using multiple communication channels.

Economic Wellbeing

Pookeno has a thriving local economy.

This matters because...

A thriving economy is dependent on growth, investment, and tourism and all have a considerable positive impact on our people in Pookeno through business creation, increased workforce, youth employment and visitor attraction.

Our commitment

- Advocate and lobby for land to be designated appropriately to enable growth and investment to occur.
- Advocate and encourage localism, including local employment opportunities.
- Collaborate with mana whenua, other organisations, and local business to connect around workforce opportunities.
- Work with our youth and other organisations to ensure that our young people are well positioned for sustainable career pathways.
- Advocate for training opportunities for young people in Pookeno.
- Partner with other organisations, including Manukau Institute of Technology, on practical, on the ground training opportunities.
- Promote and advocate for tourism opportunities, including environmental tourism, to attract visitors to our village.
- Hold a business networking hui event to showcase our economic priorities for Pookeno.

- Continue to build and strengthen our relationship with the Tuakau and Districts Development Association.
- As a Community Committee we will support community-led development with letters of support for our community's priorities identified through the Blueprints and other community aspirations that our community wants to undertake.

Success looks like...

- A meeting has been co-ordinated with the Strategic Planning Team to identify future growth and commercial land opportunities.
- The Community Committee has actively promoted and advocated for growth, investment and tourism for Pookeno.
- Youth to employment sessions have been held in partnership with others.
- Discussions with the schools, mana whenua, and other organisations on sustainable career pathways are underway.
- Relationships have been built and a networking hui held with local business to showcase the Community Committee's priorities regarding economic wellbeing and youth to local employment.

Engagement

We are committed to citizen-led decision-making.

This matters because...

Engagement is vital for fostering a strong sense of community and leads to better



wellbeing outcomes for our communities. We are representative of the community that elected us to office therefore it is important that we bring the voice of our people to the decision-making table.

Our commitment

- Build capability in our community around Council processes for example, Long Term Plans, Annual Plans, Policy Reviews and other matters that Council is seeking consultation on.
- Through its partnership with Council the Community Committee will be the main conduit out to its community to increase participation in citizen led decision-making.
- Engage with our community on plans in the Pookeno area using a variety of communication channels.
- Facilitate community hui on matters of interest to ensure the voice of the community, including the voice of mana whenua, is well represented within our decision-making.
- Identify key stakeholders within our community and strengthen our relationships with them.
- Continue to strengthen our relationship with local Marae and hapu groups.
- Co-opt passionate individuals to support the Community Committee when required.

What success looks like...

- Increased numbers of submissions are evidenced on areas that the community feel strongly about.
- Regular communication to the community following Community

Committee meetings and on matters directly relating to the Pookeno community is made.

- Increased levels of community involvement on matters and issues that relate to them.
- Relationships with key stakeholders are being fostered and nurtured.
- The community is using Council systems for their requests.







Key amenities and services

Council Facilities



1 Community hall



2 Council parks

Community and Education



[entry of committee's choice]



[entry of committee's choice]



1 Primary school, 5 Early childhood education centres

Emergency Services



1 Volunteer fire brigade



1 Highway patrol
Police station

Recreation and shopping



Pookeno offers a range of recreational activities for all ages.



1 Shopping area on the main street







Your Community Committee



Allen Grainger
Chairperson



Helen Clotworthy
Deputy Chairperson



Ian Leader



Bronwyn Heath



Mike Holroyd



Janet Baillie



Cecilia Heta



Ginny Bullock



**Councillor Kandi
Ngataki**

CREATING
LIVEABLE, THRIVING
+ CONNECTED
COMMUNITIES