



Taupiri Community Board Plan 2024-2026

TABLE OF CONTENTS



01

**A message from your
community board**
Page 2

02

**About community boards
and committees**
Page 3

03

**Our community
outcomes**
Page 4

04

Our vision
Page 5

05

Our priorities
Page 6

06

Map of community area
Page 11

07

**Key amenities and
facilities**
Page 12

08

**Community committee
investment**
Page 13

09

**Your community
committee**
Page 14

A message from your Community Board

Kia ora Taupiri community.

The Taupiri Community Board is excited to present our Community Board Plan. The Plan focusses on enhancing economic, social, cultural and environmental well-beings for our community, now and for future generations.

Our commitment is to represent and advocate for our community, and to strengthen relationships for the betterment of Taupiri.

We are here to encourage our local voices to be heard.

Ngaa mihi,

Taupiri Community Board



About community boards

Community Boards play an important role in local governance and citizen-led democracy, serving as the primary link between the local community and the Council. We are your representatives at council, and respected connectors into the community.

Our roles are governed by the Local Government Act 2002. Some of the roles specified are:

- The key connector between the community and council.
- Advocate for and represent the interests of our community.
- Consider and report on all matters referred to us by the council, or any other matter of interest to us as a board.
- Keep track of the services provided by the council in our community.
- Prepare an annual submission to the council for expenditure within our community.
- Engage with organisations and special interest groups within the local community.

Community Board Plans

Community Board Plans are developed every three years and outline our key priorities for our elected term. They also indicate how we will work in partnership with locals and mana whenua to achieve the Council's community outcomes.

A key part of the development of our plan is engagement with locals to ensure that our priorities reflect the needs and desires of Taupiri.



Our Community Outcomes

Everything we do is aimed at improving the wellbeing of the people that live, work, and explore the Waikato District. Our Community outcomes are developed under the four wellbeing pillars and describe what we want to achieve for the Waikato District into the future.



Cultural

We celebrate who we are.

We celebrate all cultures. We treasure our diverse communities, and acknowledge our cultural rights and obligations. We honour, understand and implement Te Tiriti o Waitangi and acknowledge the relationship with mana whenua of our district.



Economic

We support local prosperity.

We champion sustainable growth in our local economy. We support local enterprise and encourage innovation and socio-economic prosperity for all, while managing regulatory processes to protect and promote our unique district. We acknowledge our rural and Maaori economies as key contributors to our district's prosperity and sustainability.



Environmental

Our environmental health underpins the health of our people.

We want waterways which are healthy and create connections. We protect and enhance our soils, water and native biodiversity and take care of our taiao (natural environment) for the health and wellbeing of our people, our communities and for future generations.



Social

We have well connected communities.

Our communities are connected, safe, accessible and resilient. We put community wellbeing at the heart of our decisions, and we embrace partnerships to get things done to improve people's lives.



Our Vision

Listen to and empower our diverse community to protect and enhance our unique identity for Taupiri in partnership with other organisations.

Our vision statements:

- We are committed to upholding Te Tiriti o Waitangi by engaging well with our community and holding Te Ao Maaori values at the core of our decision-making.
- The views, interests, needs and aspirations of residents are effectively represented.
- We have an open and transparent decision-making process that residents can understand and engage in.
- Our focus is to enhance environmental, cultural, social and economic wellbeing.
- To have a strong relationship with our community as a respected arm of Waikato District Council.
- To have a strong relationship with Council so that the voice of our community is kept well-informed of things happening in our area.

Our priorities

Cultural Wellbeing

Strengthen and nurture our relationships with mana whenua and our community to ensure that our unique environment, which has a high cultural significance, is protected, celebrated, and enhanced.

This matters because...

Alongside mana whenua our community is kaitiaki of an area with a unique natural environment and significant heritage that includes Taupiri Maunga, the Waikato awa, and the Hakarimata Ranges which make up our unique identity providing a sense of togetherness and belonging.

Our commitment

- Promote and celebrate arts, culture and heritage to encourage strength, togetherness and belonging.
- Continue to strengthen our relationship with mana whenua to ensure their input and perspective is heard.
- Work in partnership with mana whenua around education and promotion of our unique environment and significant heritage.
- We as a Board will support discretionary funding on projects aligned to enhancing cultural wellbeing.
- As a Board we will support community-led development with letters of support for our community's priorities identified through the Blueprints and other community aspirations that our community wants to undertake.

Success looks like...

- Increased signage that provides education on our significant heritage.
- Regular hui is being held with mana whenua.
- Arts are celebrated and actively promoted in Taupiri.

Economic Wellbeing

Growth, investment, and tourism are supported to enable a positive thriving economy.

This matters because...

A positive thriving economy is built on a foundation of growth, investment, tourism all of which lead to opportunities for our community. All of these areas will enable more business and attract visitors leading to employment opportunities and career pathways for our young people.

Our commitment

- Advocate and lobby for land to be designated appropriately to enable growth and investment to occur.
- Co-ordinate a meeting between Council and the Community Board to discuss planning options for future residential and commercial growth.
- Partner with organisations and local businesses to offer the right support to our young people into employment.
- Work with our youth and other organisations to ensure that our young people are well positioned for sustainable career pathways.
- Promote and advocate for tourism opportunities to attract visitors to our village.

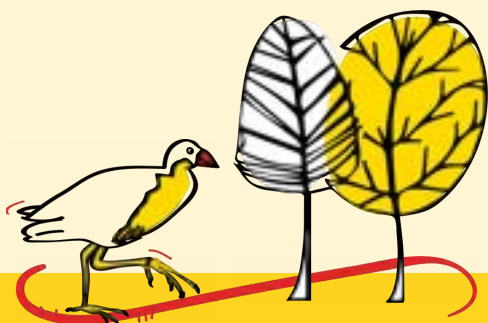
- We as a Board will support discretionary funding on projects aligned to enhancing economic wellbeing.
- As a Board we will support community-led development with letters of support for our community's priorities identified through the Blueprints and other community aspirations that our community wants to undertake

Success looks like...

- A meeting has been co-ordinated with the Strategic Planning Team to identify future growth and commercial land opportunities.
- The Board has actively promoted and advocated for growth, investment, and tourism for Taupiri.
- Youth to employment sessions have been held in partnership with others.
- Discussions with the schools, mana whenua, and other organisations on sustainable career pathways are underway.
- Relationships have been built and a networking hui held with local business to showcase the Board's priorities regarding economic wellbeing and youth to local employment.

Environmental Wellbeing

Protect, preserve and enhance our natural environment and biodiversity for present and future generations.



This matters because...

As kaitiaki, alongside mana whenua, we have a duty of care to look after our environment particularly with the threat and impact of climate change now and for our future generations.

Our commitment

- Partner with Council, the Waikato Regional Council, Waikato Tainui, mana whenua, Taupiri Community Trust and Waka Kotahi to identify the many opportunities for native planting and ecological restoration.
- Hold community days, in partnership with other organisations, to educate and encourage the preservation and enhancement of our natural environment and biodiversity.
- Hold and promote annual clean-up days with the Taupiri community in partnership with the Waste minimisation team at Council and our schools.
- Establish a group of local volunteers passionate about protecting and enhancing our natural environment to assist in the education of our community.
- Encourage and support community-led resilience planning.
- Encourage the use of ecological initiatives to mitigate natural hazards where appropriate.
- Advocate that climate change adaptation and resilience planning includes climate mitigation measures, so that adaptation activities do not contribute to climate change.
- We as a Board will support discretionary funding on projects aligned to enhancing environmental wellbeing.

- As a Board we will support community-led development with letters of support for our community's priorities identified through the Blue Prints and other community aspirations that our community wants to undertake

Success looks like...

- A meeting with Council, Waikato Regional Council, Waikato Tainui, mana whenua, Waikato District Council, Taupiri Community Trust and Waka Kotahi to discuss opportunities for native planting and ecological restoration is held.
- An education day is held with the community to promote the importance of our protecting and preserving our natural environment and biodiversity in partnership with others.
- A meeting has been co-ordinated with the Council's Waste Minimisation and Climate Action and Sustainability Teams on opportunities to educate the Taupiri community on what it means to protect and enhance our environment.
- Board members have established a group of passionate individuals within the community to support and assist with environmental initiatives within the community.
- Resilience planning which includes climate mitigation measures within the Taupiri community has been promoted through various channels.

Social Wellbeing

Connecting our community through social activities to foster meaningful relationships.

This matters because...

With changing demographics and increasing growth we need to preserve and enhance our social infrastructure that provides our community a sense of togetherness and belonging.

It is through this infrastructure that will ensure Taupiri is a great place for our people to live, work, play and invest in.

Our commitment

- Promote social activity to reduce social isolation.
- The Board will undertake a stocktake of what social activity exists in Taupiri.
- The Board will establish an events calendar for its community to raise awareness of social activity taking place within its area.
- Advocate for connected walkways from the Service Centre just off State Highway 1 into the Taupiri village.
- Advocate for walkways to enable our children to safely walk to school.
- Work with its community to ensure that community facilities are positioned in places that supports community connection such as entertainment and recreational events to create a vibrant outdoor space. As part of this mahi it will draw the connection with the Community-Led Development Advisor to provide support through the Blueprints and community aspirations.
- Co-opt passionate individuals in its community to develop welcome packs for new people into the village.
- We as a Board will support discretionary funding on projects aligned to enhancing social wellbeing.

- As a Board we will support community-led development with letters of support for our community's priorities identified through the Blueprints and other community aspirations that our community wants to undertake.

Success looks like...

- The Board has actively promoted social activity across its community using multiple communication channels.
- The Board has conducted a stocktake of all social activity within its community.
- Our community will be aware of the different social activities available to them within the Taupiri community.
- Communities will have access to local community facilities.
- Communities will have access to local community facilities and our beautiful natural environment.
- The Community Board has held a community connection day.

Engagement

We are committed to citizen-led decision-making.

This matters because...

Engagement is vital for fostering a strong sense of community and leads to better wellbeing outcomes for our communities. We are representative of the community that elected us to office therefore it is important that we bring the voice of our people to the decision-making table.



Our commitment

- Build capability in our community around Council processes for example, Long Term Plans, Annual Plans, Policy Reviews and other matters that Council is seeking consultation on.
- Through its partnership with Council the Board will be the main conduit out to its community to increase participation in citizen led decision-making.
- Engage with our community on plans in the Taupiri area using a variety of communication channels.
- Facilitate community hui on matters of interest to ensure the voice of the community, including the voice of mana whenua, is well represented within our decision-making.
- Identify key stakeholders within our community and strengthen our relationships with them.
- Continue to strengthen our relationship with local Marae and hapu groups.
- Co-opt passionate individuals to support the Board when required.

Success looks like...

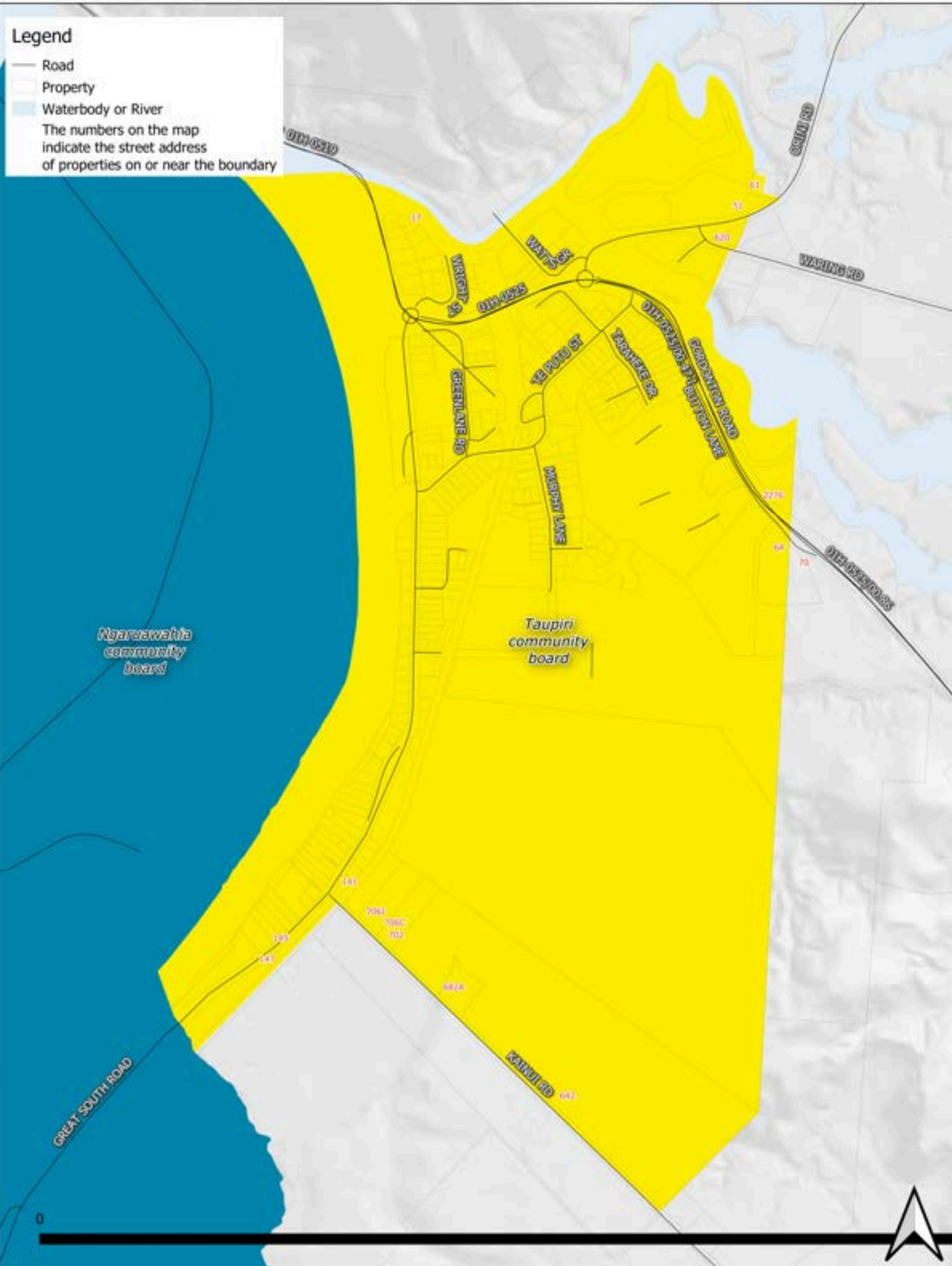
- Increased numbers of submissions are evidenced on areas that the community feel strongly about.
- Regular communication to the community following Community Board meetings and on matters directly relating to the Taupiri community is made.
- Increased levels of community involvement on matters and issues that relate to them.
- Relationships with key stakeholders are being fostered and nurtured.
- The community is using Council systems for their requests.



Legend

- Road
- Property
- Waterbody or River

The numbers on the map indicate the street address of properties on or near the boundary





Key amenities and services

Council Facilities



2 nearby libraries and
1 nearby Council Office



1 park and
reserve

Community and Education



1 community
church



1 Playcentre
and 1 Plunket



1 afterschool
care service



1 Primary school, 1 early childhood education centres,
1 Koohanga Reo

Emergency Services



3 Defibulators



2 Nearby volunteer fire brigades,
2 Nearby ambulance stations,
2 Nearby police stations

Recreation and shopping



Taupiri offers
a range of recreational
activities for all ages.



Taupiri has a variety
of retail and services.



Community Board Investment

The Taupiri Community Board has funding available for allocation each year. The purpose of this fund is to assist community groups projects.

If you would like to apply for funding, or for more information, please visit waikatodistrict.govt.nz/community-funding-grants or scan the below QR code.



Your Community Board



Joanne Morley
Chairperson



Sharnay Ormsby
Cocup-Hughes
Deputy Chair



Dorothy Lovell



Howard Lovell



Councillor Janet Gibb



Councillor Tilly Turner

CREATING
LIVEABLE, THRIVING
+ CONNECTED
COMMUNITIES