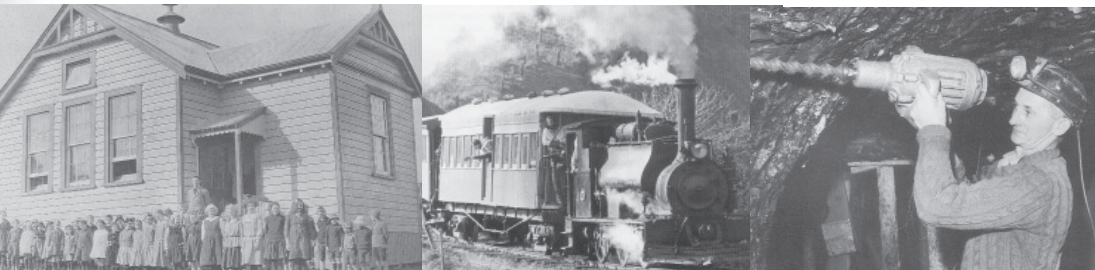


SECRETARY: G. POLLOCK.
All Communications to be Addressed to the Secretary

PHONES
HEAD OFFICE 43-323
SECRETARY ONLY 45-387
M'EDEN 43-440
COLLIERY HUNTLY 47

SOLE PRODUCERS OF "PUKE-COAL"

PUKEMIRO CHAMBERS
53 ANZAC AVENUE
P.O. BOX 940, AUCKLAND, 9th September 1932



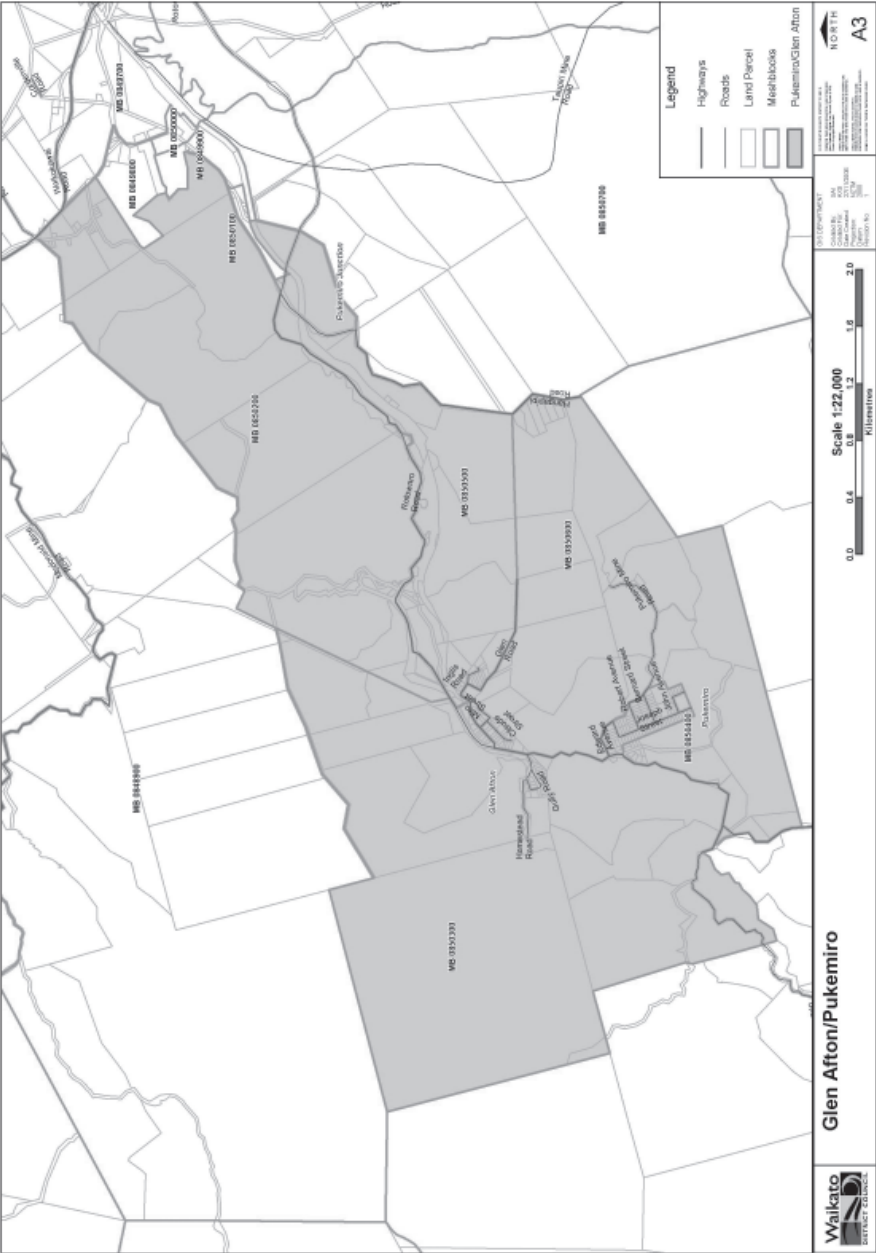
GLEN AFTON AND PUKEMIRO

Community Plan 2007-2017

201	8	Pukemiro	*	*	*	*	6 15	GO	*	*	*
329	10	Glen Afton ..	arr	7 50	12 42	2 0	3 52	6 50	11 20	11 50

Miles.	UP.	TIME-TABLE.										
		Not Mon. am	am	pm	Sat. pm	Not Sat. pm	Not Sat. pm	Not Sat. pm	Sat. pm	Sat. pm	Goods, with car.	
2	Glen Afton ..	dep	12 20	8 15	1 7	2 45	..	4 25	..	6 50	7 10	11 30
3	Pukemiro
4	Rotowaro
5	Renown Collieries' Sdg
6	Mahuta
7	Weavers Crossing
10	Huntly ..	arr	1 0	9 0	1 50	3 25	4 35	5 5	7 30	7 55	12 0	..

The Glen Afton and Pukemiro Area



Key Statistics

2006 Census Statistics

	Glen Afton/ Pukemiro	Waikato District	New Zealand
Population	315	43,959	4,027,947
Percentage aged under 15 ys	20.95%	25.50%	21.54%
Percentage aged over 65 ys	12.38%	10.00%	12.30%
Private Dwellings	129	15,090	1,471,746
Ethnicity - Percentage of Maori	31.91%	25.85%	14.65%
Post School Qualifications	44.19%	44.80%	46.18%
Unemployment Rate	7.23%	3.54%	3.37%
Median Income	\$19,333.33	\$25,700.00	\$24,400.00



Historical Background

Glen Afton and Pukemiro developed with the bridging of the Waikato River at Huntly in 1913. By the 1920's these small coalmining settlements were established in the hills to the west, located approximately 17 kilometres from Huntly.

A branch line was built westward from Huntly to Pukemiro Junction to convey coal from the large coalfields. Pukemiro Junction was the end of the line until 1923, when the line was extended to Glen Afton.

On September the 24th 1939 there was a fire in the Glen Afton Mine, and 11 men lost their lives to carbon monoxide poisoning.

Pukemiro Mine closed in September 1967 followed by Glen Afton in March 1969 and the MacDonald Mine (originally Glen Afton No 2 Mine) in November 1971. As there was no other traffic the line from Rotowaro to Glen Afton was closed in March 1973.

Originally the whole district was known as Pukemiro Township. In its heyday it had thirteen shops mainly built along Joseph Street. The community increased as people moved to the area to work in the mines. Glen Afton also had a variety of traders once the mine opened and it became a separate settlement.

Because of the increase in population to the area, there was a need for a local school. An application for the erection of a school at Pukemiro to accommodate 18 pupils was put forward in September 1913. The unavailability of a building saw the school being conducted in a double Bach that had previously been miners' accommodation. Today the school is on a different site and the roll stands at 36.

The local halls in these settlements were a vital part of the community; Pukemiro hall was built about 1913 and housed almost all the entertainment over the next 60 years. Glen Afton still has a citizens' sports club, known as the "Blue Rooms" built on the site of the old Pottery works.

In the early days the township of Pukemiro and Glen Afton had many recreational activities. There was regular Badminton, Indoor bowls Tournaments, Outdoor bowls, Basketball, Cycling, Rugby League, Soccer, Boxing, Golf Club, Tennis Club, Dances, 500 and Euchre Card evenings, Beetles mornings, Women's Institute, a Social Club and picnics.

The Bush Tramway Club, sited at Pukemiro Junction, was formed in 1965. The club is

a volunteer steam preservation group providing the public with steam train rides in a replica heritage bush tramway setting. The Line will operate from Rotowaro/Pukemiro Junction to Glen Afton when finished.

Glen Afton and Pukemiro are communities that respect the past and appreciate the environment they live in.



What will this plan achieve?

Your Community Plan is the vehicle for community discussion, on which future outcomes for Glen Afton and Pukemiro can be determined.

This Plan represents the community's shared view on Glen Afton and Pukemiro's future.

It is important to remember, this is not a Council Plan. This Plan is for the whole of the Glen Afton and Pukemiro Community, and is owned by you!

Your Community Plan is a collection of ideas for action. It is a priority list of desired works and activities that has been identified over the past few months. The plan gives voice to local aims and aspirations and provides an opportunity for involvement by people who are interested in the future of this area.

Local leadership on community planning, now, will ensure that available resources are used in the best possible way by matching agreed community priorities.

As well as focusing community debate, getting people involved in the future of their community, and avoiding haphazard development, the Plan will help influence Waikato District Council's programme of works during its annual and long-term planning processes.

The process...

The Glen Afton/Pukemiro Committee formed in 2006. The Committee held a public meeting to discuss the issues in the area and will continue to work with the Glen Afton and Pukemiro community to take forward this Plan.

The Committee will promote this Plan to Council to provide clear direction for the future development of Glen Afton and Pukemiro.

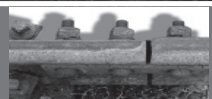
The Plan is a living document and will undergo a regular monitoring and reviewing process.

Your Community Committee

Name

Phone Number

John Reid (Chairperson)	828 4699
Lesley Morrell (Secretary)	828 6618
Cilla Wilson	-
Peter Boyd	-
Colin Jenner	828 4850
Jim Tandy	828 4688
Bill Anderson	828 4842
Beth Pickering	828 4688
Daniel Wright	828 4660
Brian Wallace	828 4984
Andrea Bullivant	828 4892
Rita Hunter	828 4845

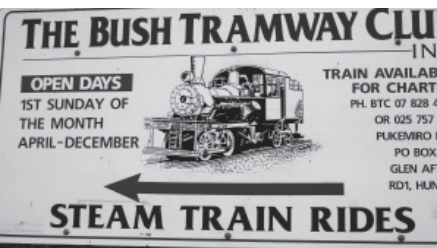


Key issues and projects

Link to Community Outcomes

Under the Local Government Act 2002, Councils are required to facilitate the identification of, and report on the achievement towards **Community Outcomes** for their residents. Having consulted with the Waikato District community, the following Community Outcomes have been identified:

Accessible Waikato	A district where the community's access to infrastructure, transport and technology meets its needs.
Active Waikato	A district that provides a variety of recreation and leisure options for the community,
Educated Waikato	A district where education options are varied, and allow our community to be skilled for work and life.
Green Waikato	A district where our natural resources are protected, developed and enhanced for future generations.
Safe Waikato	A district where people feel safe and supported within their communities and where crime is under control.
Sustainable Waikato	A district where growth is effectively managed.
Thriving Waikato	A district where business and industry are encouraged and supported and employment contributes to a successful local economy.
Vibrant Waikato	A district where our heritage and culture are recognised, protected and celebrated.
Well Waikato	A district where people can access quality community health and care services.



Specific issues and projects

The following key issues and projects are consistent with the Council's nine Community Outcomes.

Signage

links to Vibrant Waikato

- Look at signage for Glen Afton and Pukemiro, which is visible from the Main Roads
- Pukemiro School needs improved signage

Environment

links to Green and Sustainable Waikato

- Weed control requires attention
- Clear empty sections and remove abandoned cars
- Clean culverts and drains
- Trim Willow trees (Leeming hill) to improve visibility
- Planting should be undertaken to improve the village surroundings
- Waterways need clearing and maintaining
- Privet Control
- Address flooding and stormwater issues

Road safety

links to Accessible and Safe Waikato

- Review speed limits in and around Glen Afton and Pukemiro
- Traffic Calming measures need to be put in place to control traffic movement and speed
- Address blackspots in the area
- Maintain tidy roadsides
- Remove beams on old railway tracks
- Improve traffic street lights



Transport/Roading

links to Accessible Thriving and Vibrant Waikato

- Upgrade kerb and channel
- Finalise sealing in the village
- Roadsides need to be regularly mown
- Investigate public transport
- Maintain Claude Road to a proper standard
- Isolated Improvements

Recreation Facilities

links to Green/Active Waikato

- Review use of Council land in the area
- Playground
- Green open space
- Upgrade the old walking bridge for access from the main road
- Develop Walkways and footpaths

Refuse/Recycling

links to Green Waikato

- Support community recycling
- Investigate options for recycling services including kerbside service

Social

links to Safe Waikato

- Improve dog control
- Ensure general upkeep of tidiness of the area
- Investigate memorial ideas as recognition of the history





Ngaruawahia District Office

15 Galileo Street

Telephone: 07 824 8633

Fax: 07 824 8091

Huntly Area Office

142 Main Street

Telephone: 07 828 7551

Raglan Area Office

7 Bow Street

Telephone: 07 825 8129

Hamilton Agency

Hamilton City Council Building

Garden Place, Hamilton

Waikato District Council

Postal Address:

Private Bag 544

Ngaruawahia

NEW ZEALAND

www.waikatodistrict.govt.nz



SECRETARY: G. POLLOCK.
All Communications to be Addressed to the Secretary

SOLE PRODUCERS OF "PUKE-COAL"

PHONES
HEAD OFFICE 43-323
SECRETARY ONLY 45-387
M'EDEN 43-440
COLLIERY HUNTLY 47

PUKEMIRO CHAMBERS
53 ANZAC AVENUE
P.O. BOX 940, AUCKLAND, 9th September 1932



GLEN AFTON AND PUKEMIRO

Community Plan 2007-2017

Miles.	UP.	Not Mon. am	am	pm	Sat. pm	Not Sat. pm	Not Sat. pm	Not Sat. pm	Sat. pm	Sat. pm	
201	8 Pukemiro	*	*	*	*	6 15	Go	*	*	
329	10 Glen Afton ..	arr	7 50	12 42	2 0	3 52	..	6 50	11 20	11 50	
			TIME-TABLE.								
12	Glen Afton .. dep	12 20	8 15	1 7	2 45	..	4 25	..	7 10	11 30	
14	Pukemiro ..	*	*	*	*	..	6 50	*	*	*	
15	Itowaro ..	*	*	*	*	4 10	*	*	*	*	
15	Renown Collieries' Sdg	
16	Mahuta ..	*	*	*	*	
17	Weavers Crossing ..	*	*	*	*	
10	Huntly .. arr	1 0	9 0	1 50	3 25	4 35	5 5	7 30	7 55	12 0	

Where To From Here?

The Next Steps

This Community Plan has been drafted by the Glen Afton/Pukemiro Community Committee as a starting point for the area.

While some of the ideas and priorities listed in this document will take a lot longer than a few years to realise - and require more resources than are available at the moment - at least there is a Plan.

The Community Committee will work with Council to prioritise issues and projects.

Please contact the Glen Afton/Pukemiro Community Committee, or the Waikato District Council if you would like any further information.

