

EW – Earthworks [000078] {000047}

The relevant area specific zone chapter provisions apply in addition to this chapter.

Objectives

EW-O1 Earthworks in all zones except the MRZ – Medium density residential zone. [000078] {000047}

Earthworks facilitate subdivision, use and development.

EW-O2 Earthworks in the MRZ – Medium density residential zone. [000078] {000047}

Earthworks facilitate subdivision, use and development while avoiding, mitigating or remedying potential adverse effects.

Policies

EW-P1 Earthworks in the GRZ – General residential zone, MRZ – Medium density residential zone, LLRZ – Large lot residential zone, SETZ – Settlement zone or OSZ – Open space zone. [000078] {000047}

- (1) Manage the effects of earthworks to ensure that:
 - (a) Erosion and sediment loss is avoided or mitigated;
 - (b) Changes to natural water flows and established drainage paths are mitigated;
 - (c) Adjoining properties and public services are protected;
 - (d) The importation of cleanfill is avoided in the zone; and
 - (e) Adverse effects on historic heritage are avoided.
- (2) Earthworks are designed and undertaken in a manner that ensures the stability and safety of surrounding land, buildings and structures.
- (3) Manage the amount of land being disturbed at any one time to avoid, remedy or mitigate adverse construction noise, vibration, dust, lighting and traffic effects.
- (4) Subdivision and development occur in a manner that maintains fundamental shape, contour and landscape characteristics.
- (5) Manage the geotechnical risks to ensure the ground remains sound, safe and stable for the intended land use.

EW-P2 Earthworks in the GRUZ – General rural zone, FUZ – Future urban zone, CORZ – Corrections zone or TTZ – TaTa Valley zone. [000078] {000047}

- (1) Enable earthworks associated with rural or conservation activities including:
 - (a) Ancillary rural earthworks;
 - (b) Farm quarries;
 - (c) The importation of controlled cleanfill material to a site; and
 - (d) Indigenous biodiversity restoration.
- (2) Manage earthworks to ensure that:

Part 2: District-wide matters / General district-wide matters / EW – Earthworks

- (a) Erosion and sediment loss is avoided or mitigated;
- (b) The ground is geotechnically sound and remains safe and stable for the duration of the intended land use;
- (c) Changes to natural water flows and established drainage paths are avoided or mitigated;
- (d) Adjoining properties and infrastructure are protected;
- (e) Historic heritage and cultural values are recognised and protected; and
- (f) Ecosystem protection, restoration, rehabilitation or enhancement works are encouraged.

EW-P3 Earthworks in the RLZ – Rural lifestyle zone. [000078] {000047}

- (1) Manage the effects of earthworks to ensure that:
 - (a) Erosion and sediment loss is avoided or mitigated;
 - (b) The ground is geotechnically sound and remains safe and stable for the duration of the intended land use;
 - (c) Changes to natural water flows and established drainage paths is avoided or mitigated.
- (2) Manage the importation of fill material to a site.
- (3) Appropriately manage the importation of cleanfill to a site.
- (4) Manage the amount of land being disturbed at any one time to avoid, remedy or mitigate adverse construction noise, vibration, odour, dust, lighting and traffic effects.
- (5) Subdivision and development occur in a manner that maintains shape, contour and landscape characteristics.

EW-P4 Earthworks in the LCZ – Local centre zone, COM – Commercial zone or TCZ – Town centre zone. [000078] {000047}

- (1) Manage earthworks in the zone to minimise:
 - (a) The adverse effects and of sediment, of dust and stormwater runoff; and
 - (b) Adverse effects on heritage.

EW-P5 Earthworks in the MAZ – Mercer Airport zone. [000078] {000047}

Provide for the unique operational requirements of an airport whilst at the same time achieving appropriate levels of amenity for surrounding properties.

Rules

Land use – effects (zones specified in the first column)

EW-RI	Gardening or disturbance of land for the installation of fence posts [000078] {000047}	
All zones	(1) Activity status: PER Activity specific conditions: Nil.	(2) Activity status where compliance not achieved: n/a

<p>EW-R2</p>	<p>Earthworks activities within the National Grid Yard [000078, 000074] {000047,000051}</p>	
<p>All zones</p>	<p>(1) Activity status: PER Activity specific conditions:</p> <p>(a) Earthworks within the National Grid Yard that comply with all of the following standards:</p> <p>(i) Do not exceed a depth (measured vertically) of 300mm within 12m of the outer visible edge of any National Grid support structure foundation.</p> <p>(ii) Do not compromise the stability of a National Grid support structure;</p> <p>(iii) Do not result in the loss of access to any National Grid support structure; and</p> <p>(iv) Do not result in a reduction in the ground to conductor clearance distances of less than 6.5m (measured vertically) from a 110kV National Grid transmission line, or 7.5m (measured vertically) from a 220kV National Grid transmission line.</p> <p>(b) The following earthworks activities are exempt from Rules EW-R2(1)(a):</p> <p>(i) Earthworks that are undertaken by a network utility operator (other than for the reticulation and storage of water for irrigation purposes) as defined by the Resource Management Act 1991;</p> <p>(ii) Earthworks undertaken as part of agricultural or domestic cultivation, or repair, sealing or resealing of a road, footpath, driveway or farm track;</p> <p>(iii) Vertical holes not exceeding 500mm in diameter that:</p> <p>(1) Are more than 1.5m from the outer edge of the pole support structure or stay wire; or</p>	<p>(2) Activity status: RDIS Where:</p> <p>(a) Earthworks within the National Grid Yard that do not comply with Standard EW-R2(1)(a)(i) but complies with Standards EW-R2(1)(a)(ii) – (iv).</p> <p>Council’s discretion is restricted to the following matters:</p> <p>(b) Impacts on the operation, maintenance, upgrading and development of the National Grid;</p> <p>(c) The risk to the structural integrity of the affected National Grid support structure(s);</p> <p>(d) Any impact on the ability of the National Grid owner (Transpower) to access the National Grid;</p> <p>(e) The risk of electrical hazards affecting public or individual safety, and the risk of property damage.</p> <p>(f) Technical advice provided by the National Grid owner (Transpower); and</p> <p>(g) Any effects on National Grid support structures including the creation of an unstable batter.</p> <p>(3) Activity status: NC Where:</p> <p>(a) Earthworks within the National Grid Yard that is not a permitted activity under Rule EW-R2(1) or a restricted discretionary activity under Rule EW-R2(2)</p>

	(2) Are a post hole for a farm fence or horticulture structure more than 6m from the visible outer edge of a tower support structure foundation.	
--	--	--

LLRZ – Large lot residential zone and SETZ – Settlement zone

EW-R3	Earthworks – general [000078] {000047, 000051, 000036}	
LLRZ – Large lot residential zone; and SETZ – Settlement zone	<p>(1) Activity status: PER</p> <p>Where:</p> <ul style="list-style-type: none"> (a) Earthworks (excluding the importation of fill material) within a site must meet all of the following standards: <ul style="list-style-type: none"> (i) Be located more than 1.5 m horizontally from any waterway, open drain or overland flow path; (ii) Not exceed a volume of more than 350m³; (iii) Not exceed an area of more than 1,000m² over any single consecutive 12 month period; (iv) The total depth of any excavation or filling does not exceed 1.5m above or below ground level; (v) The slope of the resulting cut, filled areas or fill batter face in stable ground, does not exceed a maximum of 1:2 (1 vertical to 2 horizontal); (vi) Earthworks are set back at least 1.5m from all boundaries; (vii) Areas exposed by earthworks are re-vegetated to achieve 80% ground cover within 2 months of the completion of the earthworks; (viii) Sediment resulting from the earthworks is retained on the site through implementation and maintenance of erosion and sediment controls and does not enter waterways, open drains or overland flow paths; 	<p>(2) Activity status where compliance not achieved: RDIS</p> <p>Council’s discretion is restricted to the following matters:</p> <ul style="list-style-type: none"> (a) Amenity values and landscape effects; (b) Volume, extent and depth of earthworks; (c) Nature of fill material; (d) Contamination of fill material; (e) Location of the earthworks to waterways, significant indigenous vegetation and habitat; (f) Compaction of the fill material; (g) Volume and depth of fill material; (h) Protection of the Hauraki Gulf Catchment Area; (i) Geotechnical stability; (j) Flood risk, including natural water flows and established drainage paths; (k) Land instability, erosion and sedimentation; and (l) The risk of earthworks exacerbating Kauri dieback disease.

	<p>(ix) Do not divert or change the nature of natural water flows, water bodies or established drainage paths; and</p> <p>(x) Provided they are not within a kauri root zone</p>	
EW-R4	Earthworks – general [000078] {000047, 000051, 000036}	
LLRZ – Large lot residential zone; and SETZ – Settlement zone	<p>(1) Activity status: PER</p> <p>Where:</p> <p>(a) Earthworks for the purpose of creating a building platform for residential purposes within a site, using imported cleanfill material, must meet the following standards:</p> <p>(b) Be carried out in accordance with NZS 4431:1989 Code of Practice for Earth Fill for Residential Development; and</p> <p>(c) Provided they are not within a kauri root zone</p>	<p>(2) Activity status where compliance not achieved: RDIS</p> <p>Council’s discretion is restricted to the following matters:</p> <p>(a) Amenity values and landscape effects;</p> <p>(b) Volume, extent and depth of earthworks;</p> <p>(c) Nature of fill material;</p> <p>(d) Contamination of fill material;</p> <p>(e) Location of the earthworks to waterways, significant indigenous vegetation and habitat;</p> <p>(f) Compaction of the fill material;</p> <p>(g) Volume and depth of fill material;</p> <p>(h) Protection of the Hauraki Gulf Catchment Area;</p> <p>(i) Geotechnical stability;</p> <p>(j) Flood risk, including natural water flows and established drainage paths;</p> <p>(k) Land instability, erosion and sedimentation; and</p> <p>(l) Provided they are not within a kauri root zone</p>
EW-R5	Earthworks – general [000078] {000047, 000033, 000051, 000036}	
LLRZ – Large lot residential zone; and SETZ – Settlement zone	<p>(1) Activity status: PER</p> <p>Where:</p> <p>(a) Earthworks for purposes other than creating a building platform for residential purposes within a site, using imported fill material, must meet all of the following standards:</p> <p>(i) Not exceed a total volume of 20m³;</p> <p>(ii) Not exceed a depth of 1.5m;</p> <p>(iii) The slope of the resulting filled area in stable ground must not exceed a maximum slope of 1:2 (1 vertical to 2 horizontal);</p>	<p>(2) Activity status where compliance not achieved: RDIS</p> <p>Council’s discretion is restricted to the following matters:</p> <p>(a) Amenity values and landscape effects;</p> <p>(b) Volume, extent and depth of earthworks;</p> <p>(c) Nature of fill material;</p> <p>(d) Contamination of fill material;</p> <p>(e) Location of the earthworks to waterways, significant indigenous vegetation and habitat;</p> <p>(f) Compaction of the fill material;</p> <p>(g) Volume and depth of fill material;</p>

	<ul style="list-style-type: none"> (iv) Fill material is setback at least 1.5m from all boundaries; (v) Areas exposed by filling are re-vegetated to achieve 80% ground cover within 2 months of the completion of the earthworks; (vi) Sediment resulting from the filling is retained on the site through implementation and maintenance of erosion and sediment controls and does not enter waterways, open drains or overland flow paths; and (vii) Do not divert or change the nature of natural water flows, water bodies or established drainage paths; and (viii) Provided they are not within a kauri root zone. 	<ul style="list-style-type: none"> (h) Protection of the Hauraki Gulf Catchment Area; (i) Geotechnical stability; (j) Flood risk, including natural water flows and established drainage paths; (k) Land instability, erosion and sedimentation; and (l) The risk of earthworks exacerbating Kauri dieback disease.
EW-R6	Earthworks including the importation of cleanfill to a site [000078] {000047, 000036}	
LLRZ – Large lot residential zone; and SETZ – Settlement zone	<p>(1) Activity status: NC</p> <p>Where:</p> <ul style="list-style-type: none"> (a) Earthworks including the importation of cleanfill to a site. 	

GRZ – General residential zone

EW-R7	Earthworks – general [000078] {000047, 000051, 000036}	
GRZ – General residential zone	<p>(1) Activity status: PER</p> <p>Where:</p> <ul style="list-style-type: none"> (a) Earthworks (excluding the use of cleanfill material or fill material) within a site must meet all of the following standards: (b) Be located more than 1.5m horizontally from any waterway, open drain or overland flow path; (c) Not exceed a volume of 250m³ and an area of not more than 1,000m² over any consecutive 12 month period; (d) The total depth of any excavation or filling does not exceed 1.5m above or below ground level; 	<p>(2) Activity status where compliance not achieved: RDIS</p> <p>Council’s discretion is restricted to the following matters:</p> <ul style="list-style-type: none"> (a) Amenity values and landscape effects; (b) Volume, extent and depth of earthworks; (c) Nature of fill material; (d) Contamination of fill material; (e) Location of the earthworks in relation to waterways, significant indigenous vegetation and habitat; (f) Compaction of the fill material; (g) Volume and depth of fill material;

	<ul style="list-style-type: none"> (e) The slope of the resulting cut, filled areas or fill batter face in stable ground, does not exceed a maximum of 1:2 (1 vertical to 2 horizontal); (f) Earthworks are set back at least 1.5m from all boundaries; (g) Areas exposed by earthworks are stabilised to avoid runoff within 1 month and re-vegetated to achieve 80% ground cover within 6 months of cessation of the earthworks; (h) Sediment resulting from the earthworks is retained on the site through implementation and maintenance of erosion and sediment controls and does not enter waterways, open drains or overland flow paths; (i) Do not divert or change the nature of natural water flows, water bodies or established drainage paths; and (j) Provided they are not within a kauri root zone 	<ul style="list-style-type: none"> (h) Protection of the Hauraki Gulf Catchment Area; (i) Geotechnical stability; (j) Flood risk, including natural water flows and established drainage paths; (k) Land instability, erosion and sedimentation; and (l) The risk of earthworks exacerbating Kauri dieback disease.
EW-R8	Earthworks – general [000078] {000047, 000051, 000036}	
GRZ – General residential zone	<p>(1) Activity status: PER</p> <p>Where:</p> <ul style="list-style-type: none"> (a) Earthworks for the purpose of creating a building platform and accessway for residential purposes within a site, including the use of imported cleanfill material or imported fill material, must meet the following standards: <ul style="list-style-type: none"> (i) Be carried out in accordance with NZS 4431:1989 Code of Practice for Earth Fill for Residential Development; and (ii) Provided they are not within a kauri root zone 	<p>(2) Activity status where compliance not achieved: RDIS</p> <p>Council’s discretion is restricted to the following matters:</p> <ul style="list-style-type: none"> (a) Amenity values and landscape effects; (b) Volume, extent and depth of earthworks; (c) Nature of fill material; (d) Contamination of fill material; (e) Location of the earthworks in relation to waterways, significant indigenous vegetation and habitat; (f) Compaction of the fill material; (g) Volume and depth of fill material; (h) Protection of the Hauraki Gulf Catchment Area; (i) Geotechnical stability; (j) Flood risk, including natural water flows and established drainage paths;

		<p>(k) Land instability, erosion and sedimentation; and</p> <p>(l) The risk of earthworks exacerbating Kauri dieback disease.</p>
EW-R9	Earthworks – general [000078] {000047, 000033, 000051, 000036}	
GRZ – General residential zone	<p>(1) Activity status: PER</p> <p>Where:</p> <p>(a) Earthworks for purposes other than creating a building platform for residential purposes within a site, using imported fill material must meet all of the following standards:</p> <p>(i) Not exceed a total volume of 20m³;</p> <p>(ii) Not exceed a depth of 1m;</p> <p>(iii) The slope of the resulting filled area in stable ground must not exceed a maximum slope of 1:2 (1 vertical to 2 horizontal);</p> <p>(iv) Fill material is setback at least 1.5m from all boundaries;</p> <p>(v) Areas exposed by filling are revegetated to achieve 80% ground cover within 2 months of the completion of the earthworks;</p> <p>(vi) Sediment resulting from the filling is retained on the site through implementation and maintenance of erosion and sediment controls and does not enter waterways, open drains or overland flow paths;</p> <p>(vii) Do not divert or change the nature of natural water flows, water bodies or established drainage paths; and</p> <p>(viii) Provided they are not within a kauri root zone.</p>	<p>(2) Activity status where compliance not achieved: RDIS</p> <p>Council's discretion is restricted to the following matters:</p> <p>(i) Amenity values and landscape effects;</p> <p>(ii) Volume, extent and depth of earthworks;</p> <p>(iii) Nature of fill material;</p> <p>(iv) Contamination of fill material;</p> <p>(v) Location of the earthworks in relation to waterways, significant indigenous vegetation and habitat;</p> <p>(vi) Compaction of the fill material;</p> <p>(vii) Volume and depth of fill material;</p> <p>(viii) Protection of the Hauraki Gulf Catchment Area;</p> <p>(ix) Geotechnical stability;</p> <p>(x) Flood risk, including natural water flows and established drainage paths;</p> <p>(xi) Land instability, erosion and sedimentation; and</p> <p>(xii) The risk of earthworks exacerbating Kauri dieback disease.</p>
EW-R10	Earthworks involving the importation of controlled fill material to a site [000078] {000047, 000051, 000036}	
GRZ – General residential zone	<p>(1) Activity status: NC</p> <p>Where:</p> <p>(a) Earthworks involving the importation of controlled fill material to a site</p>	
EW-R11	Earthworks – general in PREC31- Lakeside Te Kauwhata precinct [000078] {000047, 000051, 000036}	

<p>PREC31- Lakeside Te Kauwhata precinct in the GRZ – General residential zone</p>	<p>(1) Activity status: PER Where:</p> <p>(a) Earthworks (excluding the importation of fill, or a CLDC), including earthworks necessary for the construction and maintenance of existing public roads or for construction of new roads in accordance with the Te Kauwhata Lakeside Precinct Plan, must meet all the following standards:</p> <p>(i) do not disturb or move more than 200m² within an individual site in a single calendar year except where the maximum area at any one time shall not exceed 400m², and</p> <p>(ii) in relation to the height of any cut or batter face do not exceed 2m, or</p> <p>(iii) are necessary for building works authorised by a building consent and:</p> <p>(1) The area of earthworks is no more than 150% of the area of those building works, or</p> <p>(2) The earthworks occur on land with an average gradient no steeper than 1:8, or</p> <p>(3) Any trenching for network utilities, or on or offsite utilities within PREC31 – Lakeside Te Kauwhata precinct area are backfilled or reinstated to original ground level; or</p> <p>(4) Traffic associated with the works is managed in accordance with a Construction Traffic Management Plan approved by the Waikato District Council as the road controlling authority;</p> <p>(5) Including any cut and batter faces or filled</p>	<p>(2) Activity status where compliance not achieved: CON Council control shall be reserved over the following matters:</p> <p>(a) Effects on amenity values;</p> <p>(b) Visual effects;</p> <p>(c) Mitigation measures including sediment control;</p> <p>(d) Effects on land utilization;</p> <p>(e) Effects on erosion;</p> <p>(f) Effects on cultural values;</p> <p>(g) Effects on heritage values;</p> <p>(h) Effects on the Lake Waikare flood plain; and</p> <p>(i) The risk of earthworks exacerbating Kauri dieback disease.</p>
--	---	--

	<p>areas, are revegetated to achieve 80% ground cover within 12 months of the earthworks being commenced; and</p> <p>(6) Retain sediment within the construction area through the implementation and maintenance of sediment controls;</p> <p>(7) Provided they are not within a kauri root zone.</p> <p>(b) Rules EW-R7 – EW-R10 and SASM-R4 do not apply to earthworks within PREC31- Lakeside Te Kauwhata precinct; and</p> <p>Advice note: The Waikato Pest Management Plan addresses the management of identified pest species, including alligator weed. It includes enforceable controls relating to subdivision and land development in infected areas.</p>	
<p>EW-R12</p>	<p>Earthworks – general in PREC31- Lakeside Te Kauwhata precinct [000078] {000047, 000051, 000036}</p>	
<p>PREC31- Lakeside Te Kauwhata precinct in the GRZ – General residential zone</p>	<p>(1) Activity status: PER Where:</p> <p>(a) Earthworks involving imported fill material (other than earthworks approved as part of a CLDC) meets all of the following standards:</p> <p>(i) All material for filling is cleanfill, and</p> <p>(ii) Filling that is not part of building work, or construction of roads, or installation of infrastructure:</p> <p>(1) Does not exceed a volume of 20m² and a depth of 1m, and</p> <p>(2) Does not include a building platform, and</p> <p>(3) Does not include placing fill into an area of significant indigenous vegetation or habitat, or</p>	<p>(2) Activity status where compliance not achieved: RDIS Council’s discretion is restricted to the following matters:</p> <p>(a) Effects on amenity values;</p> <p>(b) Visual effects;</p> <p>(c) Effects on indigenous vegetation and habitat;</p> <p>(d) Mitigation measures including replacement planting where vegetation removal is involved;</p> <p>(e) Effects on cultural values;</p> <p>(f) Effects on heritage values; and</p> <p>(g) The risk of earthworks exacerbating Kauri dieback disease</p>

	<p>(iii) Is for minor upgrading of existing electricity lines and does not exceed 50m², and</p> <p>(iv) Where traffic associated with the work uses public roads, is managed in accordance with an approved Construction Traffic Management Plan or authorised in writing by Waikato District Council as the road controlling authority; and</p> <p>(v) Provided they are not within a kauri root zone.</p> <p>(b) Rules EW-R7 – EW-R10 and SASM-R4 do not apply to earthworks within PREC31-Lakeside Te Kauwhata precinct.</p> <p>Advice note: The Waikato Pest Management Plan addresses the management of identified pest species, including alligator weed. It includes enforceable controls relating to subdivision and land development in infected areas.</p>	
--	---	--

MRZ – Medium density residential zone

EW-R13	Earthworks – general [000078] {000047, 000051, 000036}	
MRZ – Medium density residential zone	<p>(1) Activity status: PER</p> <p>Where:</p> <p>(a) Earthworks (excluding the importation of fill material) within a site must meet all of the following standards:</p> <p>(i) Be located more than 1.5 m horizontally from any waterway, open drain or overland flow path;</p> <p>(ii) Not exceed a volume of 1000m³;</p> <p>(iii) Not exceed an area of 1ha over any consecutive 12 month period;</p> <p>(iv) The total depth of any excavation or filling does not exceed 1.5m above or below ground level;</p> <p>(v) The slope of the resulting cut, filled areas or fill batter</p>	<p>(2) Activity status where compliance not achieved: RDIS</p> <p>Council’s discretion is restricted to the following matters:</p> <p>(a) Amenity values and landscape effects;</p> <p>(b) Volume, extent and depth of earthworks;</p> <p>(c) Nature of fill material;</p> <p>(d) Contamination of fill material;</p> <p>(e) Location of the earthworks in relation to waterways, significant indigenous vegetation and habitats;</p> <p>(f) Compaction of the fill material;</p> <p>(g) Volume and depth of fill material;</p> <p>(h) Geotechnical stability;</p>

	<p>face in stable ground, does not exceed a maximum of 1:2 (1 vertical to 2 horizontal);</p> <p>(vi) Earthworks must not result in any instability of land or structures at, or beyond, the boundary of the site where the land disturbance occurs;</p> <p>(vii) Areas exposed by earthworks are revegetated to achieve 80% ground cover within 2 months of the completion of the earthworks;</p> <p>(viii) Sediment resulting from the earthworks is retained on the site through implementation and maintenance of erosion and sediment controls and does not enter waterways, open drains or overland flow paths; and</p> <p>(ix) Do not divert or change the nature of natural water flows, water bodies or established drainage paths; and</p> <p>(x) Provided they are not within a kauri root zone</p>	<p>(i) Flood risk, including natural water flows and established drainage paths;</p> <p>(j) Land instability, erosion and sedimentation; and</p> <p>(k) The risk of earthworks exacerbating Kauri dieback disease.</p>
EW-RI4	Earthworks – general [000078] {000047, 000051}	
<p>MRZ – Medium density residential zone</p>	<p>(1) Activity status: PER</p> <p>Where:</p> <p>(a) Earthworks for the purpose of creating a building platform for residential purposes within a site, including the use of imported cleanfill material and imported fill material, must meet the following standards:</p> <p>(i) Be carried out in accordance with NZS 4431:1989 Code of Practice for Earth Fill for Residential Development; and</p> <p>(ii) Provided they are not within a kauri root zone</p>	<p>(2) Activity status where compliance not achieved: RDIS</p> <p>Council’s discretion is restricted to the following matters:</p> <p>(i) Amenity values and landscape effects;</p> <p>(ii) Volume, extent and depth of earthworks;</p> <p>(iii) Nature of fill material;</p> <p>(iv) Contamination of fill material;</p> <p>(v) Location of the earthworks in relation to waterways, significant indigenous vegetation and habitats;</p> <p>(vi) Compaction of the fill material;</p> <p>(vii) Volume and depth of fill material;</p> <p>(viii) Geotechnical stability;</p>

		<ul style="list-style-type: none"> (ix) Flood risk, including natural water flows and established drainage paths; (x) Land instability, erosion and sedimentation; and (xi) The risk of earthworks exacerbating Kauri dieback disease
EW-RI 5	Earthworks – general [000078] {000047, 000051, 000036}	
MRZ – Medium density residential zone	<p>(1) Activity status: PER</p> <p>Where:</p> <ul style="list-style-type: none"> (a) Earthworks for purposes other than creating a building platform for residential purposes within a site, using imported fill material must meet all of the following standards: <ul style="list-style-type: none"> (i) Not exceed a total volume of 50m³; (ii) Not exceed a depth of 1.5m; (iii) The slope of the resulting filled area in stable ground must not exceed a maximum slope of 1:2 (1 vertical to 2 horizontal); (iv) Earthworks must not result in any instability of land or structures at or beyond the boundary of the site where the land disturbance occurs; (v) Areas exposed by filling are revegetated to achieve 80% ground cover within 2 months of the completion of the earthworks; (vi) Sediment resulting from the filling is retained on the site through implementation and maintenance of erosion and sediment controls and does not enter waterways, open drains or overland flow paths; (vii) Do not divert or change the nature of natural water flows, water bodies or established drainage paths; and (viii) Provided they are not within a kauri root zone 	<p>(2) Activity status where compliance not achieved: RDIS</p> <p>Council’s discretion is restricted to the following matters:</p> <ul style="list-style-type: none"> (a) Amenity values and landscape effects; (b) Volume, extent and depth of earthworks; (c) Nature of fill material; (d) Contamination of fill material; (e) Location of the earthworks in relation to waterways, significant indigenous vegetation and habitats; (f) Compaction of the fill material; (g) Volume and depth of fill material; (h) Geotechnical stability; (i) Flood risk, including natural water flows and established drainage paths; (j) Land instability, erosion and sedimentation; and (k) The risk of earthworks exacerbating Kauri dieback disease
EW-RI 6	Earthworks – general [000078] {000047, 000036}	
MRZ – Medium	(1) Activity status: NC	

density residential zone	<p>Where:</p> <p>(a) Earthworks involving the importation of controlled fill material to a site.</p>
--------------------------	---

GRUZ – General rural zone

Advice note: the National Environmental Standards for Freshwater 2020 also contain rules relating to earthworks and apply in addition to the District Plan rules.

EW-RI7	Ancillary rural earthworks [000078, 000051] {000047, 000051, 000036}	
GRUZ – General rural zone; CORZ – Corrections Zone; FUZ – Future urban zone; and TTZ – TaTa Valley zone	<p>(1) Activity status: PER</p> <p>Activity specific conditions:</p> <p>(a) Provided they are not within a kauri root zone</p>	<p>(2) Activity status where compliance not achieved: RDIS</p> <p>Council’s discretion is restricted to the following matters:</p> <p>(a) The risk of earthworks exacerbating Kauri dieback disease</p>
EW-RI8	A farm quarry [000078] {000047, 000051, 000036}	
GRUZ – General rural zone; CORZ – Corrections Zone; FUZ – Future urban zone; and TTZ – TaTa Valley zone	<p>(1) Activity status: PER</p> <p>Activity specific conditions:</p> <p>(a) Where the volume of aggregate extracted does not exceed 1000m³ in any single consecutive 12 month period;</p> <p>(b) Earthworks are setback 5m horizontally from any waterway, open drain or overland flow path; and</p> <p>(c) Provided they are not within a kauri root zone.</p>	<p>(2) Activity status where compliance not achieved: RDIS</p> <p>Council’s discretion is restricted to the following matters:</p> <p>(a) Amenity values and landscape effects;</p> <p>(b) Volume, extent and depth of earthworks;</p> <p>(c) Nature of fill material;</p> <p>(d) Contamination of fill material or cleanfill;</p> <p>(e) Location of the earthworks to waterways, significant indigenous vegetation and habitat;</p> <p>(f) Compaction of the fill material;</p> <p>(g) Volume and depth of fill material;</p> <p>(h) Protection of the Hauraki Gulf Catchment Area;</p> <p>(i) Geotechnical stability;</p> <p>(j) Flood risk, including natural water flows and established drainage paths;</p> <p>(k) Land instability, erosion and sedimentation; and</p> <p>(l) Effects on the safe, effective and efficient operation, maintenance and upgrade of infrastructure, including access; and</p>

		(m) The risk of earthworks exacerbating Kauri dieback disease.
EW-R19	Earthworks required to form a building platform [000078] {000047, 000051, 000036}	
GRUZ – General rural zone; CORZ – Corrections Zone; FUZ – Future urban zone; and TTZ – TaTa Valley zone	<p>(1) Activity status: PER</p> <p>Activity specific conditions:</p> <p>(a) Earthworks required to form a building platform that will be subject to a building consent where undertaken in accordance with NZS 4431:1989 Code of Practice for Earth Fill for Residential Development; and</p> <p>(b) Provided they are not within a kauri root zone.</p>	<p>(2) Activity status where compliance not achieved: RDIS</p> <p>Council’s discretion is restricted to the following matters:</p> <p>(a) Amenity values and landscape effects;</p> <p>(b) Volume, extent and depth of earthworks;</p> <p>(c) Nature of fill material;</p> <p>(d) Contamination of fill material or cleanfill;</p> <p>(e) Location of the earthworks to waterways, significant indigenous vegetation and habitat;</p> <p>(f) Compaction of the fill material;</p> <p>(g) Volume and depth of fill material;</p> <p>(h) Protection of the Hauraki Gulf Catchment Area;</p> <p>(i) Geotechnical stability;</p> <p>(j) Flood risk, including natural water flows and established drainage paths;</p> <p>(k) Land instability, erosion and sedimentation;</p> <p>(l) Effects on the safe, effective and efficient operation, maintenance and upgrade of infrastructure, including access; and</p> <p>(m) The risk of earthworks exacerbating Kauri dieback disease.</p>
EW-R20	Earthworks ancillary to a conservation activity [000078] {000047, 000051, 000036}	
GRUZ – General rural zone; CORZ – Corrections Zone; FUZ – Future urban zone; and TTZ – TaTa Valley zone	<p>(1) Activity status: PER</p> <p>Activity specific conditions:</p> <p>(a) Shall meet the following standards:</p> <p>(i) Sediment resulting from the earthworks is managed on the site through implementation and maintenance of erosion and sediment controls and does not enter waterways, open</p>	<p>(2) Activity status where compliance not achieved: RDIS</p> <p>Council’s discretion is restricted to the following matters:</p> <p>(a) Amenity values and landscape effects;</p> <p>(b) Volume, extent and depth of earthworks;</p> <p>(c) Nature of fill material;</p> <p>(d) Contamination of fill material or cleanfill;</p>

	<p>drains or overland flow paths; and</p> <p>(ii) Provided they are not within a kauri root zone</p>	<p>(e) Location of the earthworks to waterways, significant indigenous vegetation and habitat;</p> <p>(f) Compaction of the fill material;</p> <p>(g) Volume and depth of fill material;</p> <p>(h) Protection of the Hauraki Gulf Catchment Area;</p> <p>(i) Geotechnical stability;</p> <p>(j) Flood risk, including natural water flows and established drainage paths;</p> <p>(k) Land instability, erosion and sedimentation;</p> <p>(l) Effects on the safe, effective and efficient operation, maintenance and upgrade of infrastructure, including access; and</p> <p>(m) The risk of earthworks exacerbating Kauri dieback disease.</p>
EW-R21	Earthworks – general [000078, 000051]	{000047, 000033, 000036, 000064}
<p>GRUZ – General rural zone;</p> <p>CORZ – Corrections Zone;</p> <p>FUZ – Future urban zone; and</p> <p>TTZ – TaTa Valley zone</p>	<p>(1) Activity status: PER</p> <p>Where:</p> <p>(a) With the exception of earthworks for the activities listed in EW-R16 – EW-R20 earthworks within a site must meet all of the following standards:</p> <p>(i) Do not exceed a volume of more than 1000m³ and an area of more than 2000m² over in any single consecutive 12 month period;</p> <p>(ii) The total combined depth of any excavation (excluding drilling) or filling does not exceed 3m above or below natural ground level;</p> <p>(iii) Take place on land with a maximum slope of 1:2 (1 vertical to 2 horizontal);</p> <p>(iv) Earthworks are setback a minimum of 1.5m from all boundaries;</p> <p>(v) Areas exposed by earthworks are stabilised on completion and any remaining bare ground re-vegetated to achieve 80%</p>	<p>(2) Activity status where compliance not achieved: RDIS</p> <p>Council’s discretion is restricted to the following matters:</p> <p>(a) Amenity values and landscape effects;</p> <p>(b) Volume, extent and depth of earthworks;</p> <p>(c) Nature of fill material;</p> <p>(d) Contamination of fill material or cleanfill;</p> <p>(e) Location of the earthworks to waterways, significant indigenous vegetation and habitat;</p> <p>(f) Compaction of the fill material;</p> <p>(g) Volume and depth of fill material;</p> <p>(h) Protection of the Hauraki Gulf Catchment Area;</p> <p>(i) Geotechnical stability;</p> <p>(j) Flood risk, including natural water flows and established drainage paths;</p> <p>(k) Land instability, erosion and sedimentation; and</p> <p>(l) Effects on the safe, effective and efficient operation, maintenance</p>

	<p>ground cover within 2 months of the completion of the earthworks;</p> <p>(vi) Sediment resulting from the earthworks is managed on the site through implementation and maintenance of erosion and sediment controls and does not enter waterways, open drains or overland flow paths; and</p> <p>(vii) Provided they are not within a kauri root zone.</p>	<p>and upgrade of infrastructure, including access; and</p> <p>(m) The risk of earthworks exacerbating Kauri dieback disease.</p>
<p>EW-R22</p>	<p>Earthworks – general [000078] {000047, 000033, 000051, 000036, 000064}</p>	
<p>GRUZ – General rural zone; CORZ – Corrections Zone; FUZ – Future urban zone; and TTZ – TaTa Valley zone</p>	<p>(1) Activity status: PER</p> <p>Where:</p> <p>(a) With the exception of earthworks for the activities listed in EW-R16 – EW-R20 using imported cleanfill material, concrete or brick must meet all of the following standards;</p> <p>(i) Do not exceed a total volume of 500m³ in any single consecutive 12 month period;</p> <p>(ii) Do not exceed a depth of 1m above natural ground level;</p> <p>(iii) The slope of the resulting filled area in stable ground does not exceed a maximum slope of 1:2 (1 vertical to 2 horizontal);</p> <p>(iv) Fill material is setback a minimum of 1.5m from all boundaries;</p> <p>(v) Areas exposed by filling are re-vegetated to achieve 80% ground cover within 2 months of the completion of the filling;</p> <p>(vi) Sediment resulting from the filling is retained on the site through implementation and maintenance of erosion and sediment controls and does not enter waterways, open drains or overland flow paths; and</p>	<p>(2) Activity status where compliance not achieved: RDIS</p> <p>Council’s discretion is restricted to the following matters:</p> <p>(a) Amenity values and landscape effects;</p> <p>(b) Volume, extent and depth of earthworks;</p> <p>(c) Nature of fill material;</p> <p>(d) Contamination of fill material or cleanfill;</p> <p>(e) Location of the earthworks to waterways, significant indigenous vegetation and habitat;</p> <p>(f) Compaction of the fill material;</p> <p>(g) Volume and depth of fill material;</p> <p>(h) Protection of the Hauraki Gulf Catchment Area;</p> <p>(i) Geotechnical stability;</p> <p>(j) Flood risk, including natural water flows and established drainage paths;</p> <p>(k) Land instability, erosion and sedimentation;</p> <p>(l) Effects on the safe, effective and efficient operation, maintenance and upgrade of infrastructure, including access; and</p> <p>(m) The risk of earthworks exacerbating Kauri dieback disease.</p>

	(vii) Provided they are not within a kauri root zone.	
EW-R23	Earthworks within a Whaanga Coast development specific control area of PREC5 – Whaanga Coast development precinct [000078] {000047, 000051, 000036}	
PREC5 – Whaanga Coast development precinct	<p>(1) Activity status: PER</p> <p>Where:</p> <p>(a) Earthworks within a Whaanga Coast development specific control area that complies with all of the following standards:</p> <p>(i) Do not exceed a volume of more than 500m³ and an area of more than 1000m²;</p> <p>(ii) The total depth of any excavation or filling does not exceed 1.5m above or below ground level with a maximum slope of 1:2 (1 vertical to 2 horizontal);</p> <p>(iii) Areas exposed by earthworks are re-vegetated to achieve 80% ground cover within 2 months of the completion of the earthworks;</p> <p>(iv) Sediment resulting from the earthworks is retained on the site through implementation and maintenance of erosion and sediment controls and does not enter waterways, open drains or overland flow paths;</p> <p>(v) Do not divert or change the nature of natural water flows, water bodies or established drainage; and</p> <p>(vi) Provided they are not within a kauri root zone</p> <p>(b) Rules EW-R17 to EW-R22 do not apply to earthworks within PREC5 – Whaanga Coast development precinct.</p>	<p>(2) Activity status where compliance not achieved: DIS</p>

RLZ – Rural lifestyle zone

EW-R24	Earthworks – general [000078] {000047, 000051, 000036}
---------------	--

<p>RLZ – Rural lifestyle zone</p>	<p>(1) Activity status: PER Where:</p> <ul style="list-style-type: none"> (a) Earthworks within a site for: <ul style="list-style-type: none"> (i) Ancillary rural earthworks; or (ii) Construction and/or maintenance of tracks, fences or drains; or (iii) A building platform for a residential activity including an accessory building. (b) Provided they are not within a kauri root zone. 	<p>(2) Activity status where compliance not achieved: RDIS Council’s discretion is restricted to the following matters:</p> <ul style="list-style-type: none"> (a) Amenity values and landscape effects; (b) Volume, extent and depth of earthworks; (c) Nature of fill material; (d) Contamination of fill material; (e) Location of the earthworks to waterways, significant indigenous vegetation and habitat; (f) Compaction of the fill material; (g) Volume and depth of fill material; (h) Protection of the Hauraki Gulf Catchment Area; (i) Geotechnical stability; (j) Flood risk, including natural water flows and established drainage paths; (k) Land instability, erosion and sedimentation; (l) Effects on the safe, effective and efficient operation, maintenance and upgrade of infrastructure, including access; and (m) The risk of earthworks exacerbating Kauri dieback disease.
<p>EW-R25</p>	<p>Earthworks – general [000078] {000047, 000051, 000036}</p>	
<p>RLZ – Rural lifestyle zone</p>	<p>(1) Activity status: PER Where:</p> <ul style="list-style-type: none"> (a) Earthworks within a site for purposes other those contained in EW-R24 (excluding the importation of fill material) must meet all of the following standards: <ul style="list-style-type: none"> (i) Do not exceed a volume of more than 500m³ and an area of more than 1000m² within a site over any single consecutive 12 month period; (ii) The total depth of any excavation or filling does not exceed 1.5m above or below ground level; 	<p>(2) Activity status where compliance not achieved: RDIS Council’s discretion is restricted to the following matters:</p> <ul style="list-style-type: none"> (a) Amenity values and landscape effects; (b) Volume, extent and depth of earthworks; (c) Nature of fill material; (d) Contamination of fill material; (e) Location of the earthworks to waterways, significant indigenous vegetation and habitat; (f) Compaction of the fill material; (g) Volume and depth of fill material; (h) Protection of the Hauraki Gulf Catchment Area;

	<ul style="list-style-type: none"> (iii) Earthworks are set back at least 1.5m from any boundary; (iv) Areas exposed by earthworks are re-vegetated or otherwise stabilised to achieve 80% ground cover within 2 months of the completion of the earthworks; (v) Sediment resulting from the earthworks is retained on the site through implementation and maintenance of erosion and sediment controls and does not enter waterways, open drains or overland flow paths; (vi) Do not divert or change the nature of natural water flows, water bodies or established drainage paths; and (vii) Provided they are not within a kauri root zone. 	<ul style="list-style-type: none"> (i) Geotechnical stability; (j) Flood risk, including natural water flows and established drainage paths; (k) Land instability, erosion and sedimentation; (l) Effects on the safe, effective and efficient operation, maintenance and upgrade of infrastructure, including access; and (m) The risk of earthworks exacerbating Kauri dieback disease.
EW-R26	Earthworks – general [000078] {000047, 000051, 000036}	
RLZ – Rural lifestyle zone	<p>(1) Activity status: PER</p> <p>Where:</p> <ul style="list-style-type: none"> (a) Earthworks for purposes other than creating a building platform for residential purposes within a site, using imported fill material must meet all of the following standards: <ul style="list-style-type: none"> (i) Not exceed a total volume of 50m³; (ii) Not exceed a depth of 1.5m; (iii) The slope of the resulting filled area in stable ground must not exceed a maximum slope of 1:2 (1 vertical to 2 horizontal); (iv) Fill material is set back 1.5m from all boundaries; (v) Areas exposed by filling are re-vegetated to achieve 80% ground cover within 2 months of the completion of the earthworks; (vi) Sediment resulting from the filling is retained on the site through implementation and maintenance of erosion and 	<p>(2) Activity status where compliance not achieved: RDIS</p> <p>Council’s discretion is restricted to the following matters:</p> <ul style="list-style-type: none"> (a) Amenity values and landscape effects; (b) Volume, extent and depth of earthworks; (c) Nature of fill material; (d) Contamination of fill material; (e) Location of the earthworks to waterways, significant indigenous vegetation and habitat; (f) Compaction of the fill material; (g) Volume and depth of fill material; (h) Protection of the Hauraki Gulf Catchment Area; (i) Geotechnical stability; (j) Flood risk, including natural water flows and established drainage paths; (k) Land instability, erosion and sedimentation; (l) Effects on the safe, effective and efficient operation, maintenance

Part 2: District-wide matters / General district-wide matters / EW – Earthworks

	<p>sediment controls and does not enter waterways, open drains or overland flow paths;</p> <p>(vii) Do not divert or change the nature of natural water flows, water bodies or established drainage paths; and</p> <p>(viii) Provided they are not within a kauri root zone.</p>	<p>and upgrade of infrastructure, including access; and</p> <p>(m) The risk of earthworks exacerbating Kauri dieback disease.</p>
EW-R27	Earthworks including the importation of cleanfill to a site [000078] {000047, 000036}	
RLZ – Rural lifestyle zone	<p>(1) Activity status: NC</p> <p>Where:</p> <p>(a) Earthworks including the importation of cleanfill to a site.</p>	

LCZ – Local centre zone and COMZ – Commercial zone

EW-R28	Earthworks – general [000078] {000047, 000051, 000036}	
LCZ – Local centre zone; COMZ – Commercial zone	<p>(1) Activity status: PER</p> <p>Where:</p> <p>(a) Earthworks within a site must meet all of the following standards:</p> <p>(i) Be located more than 1.5m from infrastructure including a public sewer, open drain, overland flow path or other public service pipe;</p> <p>(ii) Not exceed a volume of more than 250m³ and an area of more than 1,000m² within a site over any single consecutive 12 month period;</p> <p>(iii) The height of the resulting cut, filled areas or fill batter face in stable ground, does not exceed 1.5m, with a maximum slope of 1:2 (1 vertical to 2 horizontal);</p> <p>(iv) Earthworks are set back at least 1.5m from all boundaries;</p> <p>(v) Areas exposed by earthworks are stabilised to avoid runoff within 1 month and re-vegetated to achieve 80% ground cover within 2 months of completion of the</p>	<p>(2) Activity status where compliance not achieved: RDIS</p> <p>Council’s discretion is restricted to the following matters:</p> <p>(a) Amenity values and landscape effects;</p> <p>(b) Volume, extent and depth of earthworks;</p> <p>(c) Nature of fill material;</p> <p>(d) Contamination of fill material;</p> <p>(e) Location of the earthworks to waterways, significant indigenous vegetation and habitat;</p> <p>(f) Compaction of the fill material;</p> <p>(g) Volume and depth of fill material;</p> <p>(h) Protection of the Hauraki Gulf Catchment Area;</p> <p>(i) Geotechnical stability;</p> <p>(j) Flood risk, including natural water flows and established drainage paths</p> <p>(k) Land instability, erosion and sedimentation; and</p> <p>(l) Proximity to underground services and service connections; and</p> <p>(m) The risk of earthworks exacerbating Kauri dieback disease.</p>

	<p>earthworks or finished with a hardstand surface;</p> <p>(vi) Sediment resulting from the earthworks is retained on the site through implementation and maintenance of erosion and sediment controls and does not enter waterways, open drains or overland flow paths;</p> <p>(vii) Do not divert or change the nature of natural water flows, water bodies or established drainage paths; and</p> <p>(viii) Provided they are not within a kauri root zone</p>	
EW-R29	Earthworks – general [000078] {000047, 000051, 000036}	
LCZ – Local centre zone; COMZ – Commercial zone	<p>(1) Activity status: PER</p> <p>Where:</p> <p>(a) Earthworks for the purpose of creating a building platform within a site (including the use of imported fill material) that is:</p> <p>(i) Subject to an approved building consent; and</p> <p>(ii) The earthworks occur wholly within the footprint of the building.</p> <p>(b) For the purposes of this rule, the footprint of the building extends 1.8m from the outer edge of the outside wall.</p> <p>(c) For the purposes of this rule, this exemption does not apply to earthworks associated with retaining walls/structures which are not required for the structural support of the building; and</p> <p>(d) Provided they are not within a kauri root zone.</p>	<p>(2) Activity status where compliance not achieved: RDIS</p> <p>Council’s discretion is restricted to the following matters:</p> <p>(a) Amenity values and landscape effects;</p> <p>(b) Volume, extent and depth of earthworks;</p> <p>(c) Nature of fill material;</p> <p>(d) Contamination of fill material;</p> <p>(e) Location of the earthworks to waterways, significant indigenous vegetation and habitat;</p> <p>(f) Compaction of the fill material;</p> <p>(g) Volume and depth of fill material;</p> <p>(h) Protection of the Hauraki Gulf Catchment Area;</p> <p>(i) Geotechnical stability;</p> <p>(j) Flood risk, including natural water flows and established drainage paths</p> <p>(k) Land instability, erosion and sedimentation;</p> <p>(l) Proximity to underground services and service connections; and</p> <p>(m) The risk of earthworks exacerbating Kauri dieback disease.</p>
EW-R30	Earthworks – general [000078] {000033, 000047, 000051, 000036}	
LCZ – Local centre zone;	<p>(1) Activity status: PER</p> <p>Where:</p>	<p>(2) Activity status where compliance not achieved: RDIS</p>

<p>COMZ – Commercial zone</p>	<p>(a) Earthworks using the importation of fill material to a site must meet all of the following standards:</p> <p>(i) Must not exceed a total volume of 500m³ per site and a depth of 1m (excluding backfill)</p> <p>(ii) The slope of the resulting filled area in stable ground must not exceed a maximum slope of 1:2 (1m vertical to 2m horizontal);</p> <p>(iii) Fill material is setback at least 1.5m from all boundaries;</p> <p>(iv) Areas exposed by earthworks are stabilised to avoid runoff within 1 month and revegetated to achieve 80% ground cover within 6 months of the cessation of the earthworks;</p> <p>(v) Sediment resulting from the earthworks is retained on the site through implementation and maintenance of erosion and sediment controls and does not enter waterways, open drains or overland flow paths;</p> <p>(vi) Do not divert or change the nature of natural water flows, water bodies or established drainage paths; and</p> <p>(vii) Provided they are not within a kauri root zone.</p>	<p>Council’s discretion is restricted to the following matters:</p> <p>(a) Amenity values and landscape effects;</p> <p>(b) Volume, extent and depth of earthworks;</p> <p>(c) Nature of fill material;</p> <p>(d) Contamination of fill material;</p> <p>(e) Location of the earthworks to waterways, significant indigenous vegetation and habitat;</p> <p>(f) Compaction of the fill material;</p> <p>(g) Volume and depth of fill material;</p> <p>(h) Protection of the Hauraki Gulf Catchment Area;</p> <p>(i) Geotechnical stability;</p> <p>(j) Flood risk, including natural water flows and established drainage paths</p> <p>(k) Land instability, erosion and sedimentation; and</p> <p>(l) Proximity to underground services and service connections; and</p> <p>(m) The risk of earthworks exacerbating Kauri dieback disease.</p>
-------------------------------	--	---

TCZ – Town centre zone

<p>EW-R31</p>	<p>Earthworks – general [000078] {000047, 000051, 000036}</p>	
<p>TCZ – Town centre zone</p>	<p>(1) Activity status: PER</p> <p>Where:</p> <p>(a) Earthworks within a site must meet all of the following standards:</p> <p>(i) Earthworks must be located more than 1.5m from infrastructure including a public sewer, open drain, overland flow path or other public service pipe;</p>	<p>(2) Activity status where compliance not achieved: RDIS</p> <p>Council’s discretion is restricted to the following matters:</p> <p>(a) Amenity values and landscape effects;</p> <p>(b) Volume, extent and depth of earthworks;</p> <p>(c) Nature of fill material;</p> <p>(d) Contamination of fill material;</p>

	<ul style="list-style-type: none"> (ii) Earthworks must not exceed a volume of more than 250m³ and an area of more than 1,000m² within a site over any single consecutive 12 month period; (iii) The height of the resulting cut, filled areas or fill batter face in stable ground, , does not exceed 1.5m, with a maximum slope of 1:2 (1 vertical to 2 horizontal); (iv) Earthworks are set back at least 1.5m from all boundaries; (v) Areas exposed by earthworks are stabilised to avoid runoff within 1 month and re-vegetated to achieve 80% ground cover within 2 months of completion of the earthworks or finished with a hardstand surface; (vi) Sediment resulting from the earthworks is retained on the site through implementation and maintenance of erosion and sediment controls and does not enter waterways, open drains or overland flow paths; (vii) Earthworks must not divert or change the nature of natural water flows, waterbodies or established drainage paths; (viii) Earthworks must not result in the site being unable to be serviced by gravity sewers; and (ix) Provided they are not within a kauri root zone. 	<ul style="list-style-type: none"> (e) Location of the earthworks in relation to waterways, significant indigenous vegetation and habitat; (f) Compaction of the fill material; (g) Volume and depth of fill material; (h) Protection of the Hauraki Gulf Catchment Area; (i) Geotechnical stability; (j) Flood risk, including natural water flows and established drainage paths (k) Land instability, erosion and sedimentation; (l) Proximity to underground services and service connections; and (m) The risk of earthworks exacerbating Kauri dieback disease.
EW-R32	Earthworks – general [000078] {000047, 000051, 000036}	
TCZ – Town centre zone	<p>(1) Activity status: PER</p> <p>Where:</p> <ul style="list-style-type: none"> (a) Earthworks for the purpose of creating a building platform within a site (including the use of imported fill material) that is: <ul style="list-style-type: none"> (i) Subject to an approved building consent; and 	<p>(2) Activity status where compliance not achieved: RDIS</p> <p>Council’s discretion is restricted to the following matters:</p> <ul style="list-style-type: none"> (a) Amenity values and landscape effects; (b) Volume, extent and depth of earthworks; (c) Nature of fill material;

	<ul style="list-style-type: none"> (ii) The earthworks occur wholly within the footprint of the building. (b) For the purposes of this rule, the footprint of the building extends 1.8m from the outer edge of the outside wall. (c) For the purposes of this rule, this exemption does not apply to earthworks associated with retaining walls/structures which are not required for the structural support of the building; and (d) Provided they are not within a kauri root zone. 	<ul style="list-style-type: none"> (d) Contamination of fill material; (e) Location of the earthworks in relation to waterways, significant indigenous vegetation and habitat; (f) Compaction of the fill material; (g) Volume and depth of fill material; (h) Protection of the Hauraki Gulf Catchment Area; (i) Geotechnical stability; (j) Flood risk, including natural water flows and established drainage paths (k) Land instability, erosion and sedimentation; (l) Proximity to underground services and service connections; and (m) The risk of earthworks exacerbating Kauri dieback disease.
<p>EW-R33</p>	<p>Earthworks – general [000078] {000047, 000051, 000036}</p>	
<p>TCZ – Town centre zone</p>	<p>(1) Activity status: PER Where:</p> <ul style="list-style-type: none"> (a) Earthworks using the importation of fill material to a site must meet all of the following standards: <ul style="list-style-type: none"> (i) Must not exceed a total volume of 500m³ per site and a depth of 1m (excluding backfill); (ii) The slope of the resulting filled area in stable ground must not exceed a maximum slope of 1:2 (1m vertical to 2m horizontal); (iii) Fill material is set back at least 1.5m from all boundaries; (iv) Areas exposed by earthworks are stabilised to avoid runoff within 1 month and revegetated to achieve 80% ground cover within 6 months of the cessation of the earthworks; (v) Sediment resulting from the earthworks is retained on the site through implementation 	<p>(2) Activity status where compliance not achieved: RDIS Council’s discretion is restricted to the following matters:</p> <ul style="list-style-type: none"> (a) Amenity values and landscape effects; (b) Volume, extent and depth of earthworks; (c) Nature of fill material; (d) Contamination of fill material; (e) Location of the earthworks in relation to waterways, significant indigenous vegetation and habitat; (f) Compaction of the fill material; (g) Volume and depth of fill material; (h) Protection of the Hauraki Gulf Catchment Area; (i) Geotechnical stability; (j) Flood risk, including natural water flows and established drainage paths (k) Land instability, erosion and sedimentation;

	<p>and maintenance of erosion and sediment controls and does not enter waterways, open drains or overland flow paths;</p> <p>(vi) Do not divert or change the nature of natural water flows, water bodies or established drainage paths; and</p> <p>(vii) Provided they are not within a kauri root zone.</p>	<p>(l) Proximity to underground services and service connections; and</p> <p>(m) The risk of earthworks exacerbating Kauri dieback disease.</p>
--	---	---

GIZ – General industrial zone

EW-R34	Earthworks – general [000078] {000047, 000051, 000036}	
GIZ – General industrial zone	<p>(1) Activity status: PER</p> <p>Where:</p> <p>(a) Earthworks (excluding the importation of fill material) within a site that:</p> <p>(i) Are located at least 1.5 m from any water body, open drain or overland flow path;</p> <p>(ii) Do not exceed a volume of 10,000m³;</p> <p>(iii) Do not exceed an area of more than 10,000m² within a 12 month period;</p> <p>(iv) Do not exceed a slope in stable ground of 1:2 (1 metre vertical to 2 metre horizontal);</p> <p>(v) Result in exposed areas being re-vegetated to achieve 80% ground cover within 2 months of the completion of the earthworks, or finished with a hardstand surface;</p> <p>(vi) Result in sediment being retained on the site through implementation and maintenance of erosion and sediment controls and does not enter waterways, open drains or overland flow paths;</p> <p>(vii) Do not result in any change to natural water flows, any water body or established drainage path; and</p> <p>(viii) Provided they are not within a kauri root zone.</p>	<p>(2) Activity status where compliance not achieved: RDIS</p> <p>Council’s discretion is restricted to the following matters:</p> <p>(a) Amenity values and landscape effects;</p> <p>(b) Volume, extent and depth of earthworks;</p> <p>(c) Nature of fill material;</p> <p>(d) Contamination of fill material;</p> <p>(e) Location of the earthworks in relation to waterways, significant indigenous vegetation and habitat;</p> <p>(f) Compaction of the fill material;</p> <p>(g) Volume and depth of fill material;</p> <p>(h) Protection of the Hauraki Gulf Catchment Area;</p> <p>(i) Geotechnical stability;</p> <p>(j) Flood risk, including natural water flows and established drainage paths;</p> <p>(k) land instability, erosion and sedimentation; and</p> <p>(l) The risk of earthworks exacerbating Kauri dieback disease.</p>

EW-R35	Earthworks – general [000078] {000047, 000051}	
GIZ – General industrial zone	<p>(1) Activity status: PER</p> <p>Where:</p> <p>(a) Earthworks within a site that may, or may not, involve imported cleanfill material, for the purpose of creating a building platform and/or ancillary hardstand area:</p> <p>(i) Provided they are not within a kauri root zone.</p>	<p>(2) Activity status where compliance not achieved: RDIS</p> <p>Council’s discretion is restricted to the following matters:</p> <p>(a) Amenity values and landscape effects;</p> <p>(b) Volume, extent and depth of earthworks;</p> <p>(c) Nature of fill material;</p> <p>(d) Contamination of fill material;</p> <p>(e) Location of the earthworks in relation to waterways, significant indigenous vegetation and habitat;</p> <p>(f) Compaction of the fill material;</p> <p>(g) Volume and depth of fill material;</p> <p>(h) Protection of the Hauraki Gulf Catchment Area;</p> <p>(i) Geotechnical stability;</p> <p>(j) Flood risk, including natural water flows and established drainage paths;</p> <p>(k) land instability, erosion and sedimentation; and</p> <p>(l) The risk of earthworks exacerbating Kauri dieback disease.</p>
EW-R36	Earthworks – general [000078] {000047, 000051, 000036}	
GIZ – General industrial zone	<p>(1) Activity status: PER</p> <p>Where:</p> <p>(a) Earthworks involving imported fill material (excluding cleanfill material) for purposes other than creating a building platform for residential purposes within a site, that:</p> <p>(i) Are located at least 1.5 metres from any water body, open drain or overland flow path;</p> <p>(ii) Do not exceed a volume of 10,000m³;</p> <p>(iii) Do not exceed a slope in stable ground of 1:2 (1 metre vertical to 2 metre horizontal);</p> <p>(iv) Result in exposed areas being re-vegetated to achieve 80% ground cover within 2</p>	<p>(2) Activity status where compliance not achieved: RDIS</p> <p>Council’s discretion is restricted to the following matters:</p> <p>(a) Amenity values and landscape effects;</p> <p>(b) Volume, extent and depth of earthworks;</p> <p>(c) Nature of fill material;</p> <p>(d) Contamination of fill material;</p> <p>(e) Location of the earthworks in relation to waterways, significant indigenous vegetation and habitat;</p> <p>(f) Compaction of the fill material;</p> <p>(g) Volume and depth of fill material;</p> <p>(h) Protection of the Hauraki Gulf Catchment Area;</p> <p>(i) Geotechnical stability;</p>

	<p>months of the completion of the earthworks, or finished with a hardstand surface;</p> <p>(v) Result in sediment being retained on the site through implementation and maintenance of erosion and sediment controls and does not enter waterways, open drains or overland flow paths;</p> <p>(vi) Do not result in any change to natural water flows, any water body or established drainage path; and</p> <p>(vii) Provided they are not within a kauri root zone.</p>	<p>(j) Flood risk, including natural water flows and established drainage paths;</p> <p>(k) land instability, erosion and sedimentation; and</p> <p>(l) The risk of earthworks exacerbating Kauri dieback disease.</p>
--	---	--

HIZ – Heavy industrial zone

EW-R37	Earthworks – general [000078] {000047, 000051, 000036}	
HIZ – Heavy industrial zone	<p>(1) Activity status: PER</p> <p>Where:</p> <p>(a) Earthworks (excluding the importation of fill material) within a site that:</p> <p>(i) Are located at least 1.5 m from any water body, open drain or overland flow path;</p> <p>(ii) Do not exceed a volume of 10,000m³;</p> <p>(iii) Do not exceed an area of more than 10,000m² within a 12 month period;</p> <p>(iv) Do not exceed a slope in stable ground of 1:2 (1 metre vertical to 2 metre horizontal);</p> <p>(v) Result in exposed areas being re-vegetated to achieve 80% ground cover within 2 months of the completion of the earthworks, or finished with a hardstand surface;</p> <p>(vi) Result in sediment being retained on the site through implementation and maintenance of erosion and sediment controls and does not enter waterways, open drains or overland flow paths;</p>	<p>(2) Activity status where compliance not achieved: RDIS</p> <p>Council’s discretion is restricted to the following matters:</p> <p>(a) Amenity values and landscape effects;</p> <p>(b) Volume, extent and depth of earthworks;</p> <p>(c) Nature of fill material;</p> <p>(d) Contamination of fill material;</p> <p>(e) Location of the earthworks to waterways, significant indigenous vegetation and habitat;</p> <p>(f) Compaction of the fill material;</p> <p>(g) Volume and depth of fill material;</p> <p>(h) Protection of the Hauraki Gulf Catchment Area;</p> <p>(i) Geotechnical stability;</p> <p>(j) Flood risk, including natural water flows and established drainage paths;</p> <p>(k) Land instability, erosion and sedimentation; and</p> <p>(l) The risk of earthworks exacerbating Kauri dieback disease.</p>

	<p>(vii) Do not result in any change to natural water flows, any water body or established drainage path; and</p> <p>(viii) Provided they are not within a kauri root zone.</p>	
EW-R38	Earthworks – general [000078] {000047, 000051, 000036}	
HIZ – Heavy industrial zone	<p>(1) Activity status: PER</p> <p>Where:</p> <p>(a) Earthworks within a site that may, or may not, involve imported cleanfill material, for the purpose of creating a building platform and/or ancillary hardstand area:</p> <p>(i) Provided they are not within a kauri root zone.</p>	<p>(2) Activity status where compliance not achieved: RDIS</p> <p>Council’s discretion is restricted to the following matters:</p> <p>(a) Amenity values and landscape effects;</p> <p>(b) Volume, extent and depth of earthworks;</p> <p>(c) Nature of fill material;</p> <p>(d) Contamination of fill material;</p> <p>(e) Location of the earthworks to waterways, significant indigenous vegetation and habitat;</p> <p>(f) Compaction of the fill material;</p> <p>(g) Volume and depth of fill material;</p> <p>(h) Protection of the Hauraki Gulf Catchment Area;</p> <p>(i) Geotechnical stability;</p> <p>(j) Flood risk, including natural water flows and established drainage paths;</p> <p>(k) Land instability, erosion and sedimentation; and</p> <p>(l) The risk of earthworks exacerbating Kauri dieback disease.</p>
EW-R39	Earthworks – general [000078] {000047, 000051, 000036}	
HIZ – Heavy industrial zone	<p>(1) Activity status: PER</p> <p>Where:</p> <p>(a) Earthworks involving imported fill material (excluding cleanfill material) for purposes other than creating a building platform for residential purposes within a site, that:</p> <p>(i) Are located at least 1.5 metres from any water body, open drain or overland flow path</p> <p>(ii) Do not exceed a volume of 10,000m³;</p>	<p>(2) Activity status where compliance not achieved: RDIS</p> <p>Council’s discretion is restricted to the following matters:</p> <p>(a) Amenity values and landscape effects;</p> <p>(b) Volume, extent and depth of earthworks;</p> <p>(c) Nature of fill material;</p> <p>(d) Contamination of fill material;</p> <p>(e) Location of the earthworks to waterways, significant indigenous vegetation and habitat;</p> <p>(f) Compaction of the fill material;</p>

	<ul style="list-style-type: none"> (iii) Do not exceed a slope in stable ground of 1:2 (1 metre vertical to 2 metre horizontal); (iv) Result in exposed areas being re-vegetated to achieve 80% ground cover within 2 months of the completion of the earthworks, or finished with a hardstand surface; (v) Result in sediment being retained on the site through implementation and maintenance of erosion and sediment controls and does not enter waterways, open drains or overland flow paths; (vi) Do not result in any change to natural water flows, any water body or established drainage path; and (vii) Provided they are not within a kauri root zone. 	<ul style="list-style-type: none"> (g) Volume and depth of fill material; (h) Protection of the Hauraki Gulf Catchment Area; (i) Geotechnical stability; (j) Flood risk, including natural water flows and established drainage paths; (k) Land instability, erosion and sedimentation; and (l) The risk of earthworks exacerbating Kauri dieback disease.
--	--	--

OSZ – Open space zone

EW-R40	Earthworks – general [000078] {000047, 000051, 000036}	
OSZ – Open space zone	<p>(1) Activity status: PER</p> <p>Where:</p> <ul style="list-style-type: none"> (a) Earthworks (excluding the importation of fill material) within a site must meet all of the following standards: <ul style="list-style-type: none"> (i) Be located more than 1.5m from a public sewer, open drain, overland flow path or other service pipe; (ii) Not exceed a volume of more than 250m³ and an area of more than 1,000m² over a single consecutive 12-month period; (iii) The height of the resulting cut, filled areas or fill batter face in stable ground, does not exceed 1.5m, with a maximum slope of 1:2 (1 vertical to 2 horizontal); (iv) Areas exposed by earthworks are re-vegetated or otherwise stabilised to 	<p>(2) Activity status where compliance not achieved: RDIS</p> <p>Council’s discretion is restricted to the following matters:</p> <ul style="list-style-type: none"> (a) Amenity values and landscape effects; (b) Volume, extent and depth of earthworks; (c) Nature of fill material; (d) Contamination of fill material; (e) Location of the earthworks to waterways, significant indigenous vegetation and habitat; (f) Compaction of the fill material; (g) Volume and depth of fill material; (h) Protection of the Hauraki Gulf Catchment Area; (i) Geotechnical stability; (j) Flood risk, including natural water flows and established drainage paths;

	<p>achieve 80% ground cover within 2 months of the completion of the earthworks;</p> <p>(v) Earthworks are set back at least 1.5m from all boundaries;</p> <p>(vi) Sediment resulting from the earthworks is retained on the site through implementation and maintenance of erosion and sediment controls and does not enter waterways, open drains or overland flow paths;</p> <p>(vii) Does not divert or change the nature of natural water flows, water bodies or established drainage paths; and</p> <p>(viii) Provided they are not within a kauri root zone.</p>	<p>(k) Land instability, erosion and sedimentation;</p> <p>(l) Proximity to underground services and service connections; and</p> <p>(m) The risk of earthworks exacerbating Kauri dieback disease.</p>
EW-R41	Earthworks – general [000078] {000047, 000051, 000036}	
OSZ – Open space zone	<p>(1) Activity status: PER</p> <p>Where:</p> <p>(a) Earthworks for purposes of creating a building platform within a site, using imported fill material:</p> <p>(i) Provided they are not within a kauri root zone.</p>	<p>(2) Activity status where compliance not achieved: RDIS</p> <p>Council’s discretion is restricted to the following matters:</p> <p>(a) Amenity values and landscape effects;</p> <p>(b) Volume, extent and depth of earthworks;</p> <p>(c) Nature of fill material;</p> <p>(d) Contamination of fill material;</p> <p>(e) Location of the earthworks to waterways, significant indigenous vegetation and habitat;</p> <p>(f) Compaction of the fill material;</p> <p>(g) Volume and depth of fill material;</p> <p>(h) Protection of the Hauraki Gulf Catchment Area;</p> <p>(i) Geotechnical stability;</p> <p>(j) Flood risk, including natural water flows and established drainage paths;</p> <p>(k) Land instability, erosion and sedimentation;</p> <p>(l) Proximity to underground services and service connections; and</p>

		(m) The risk of earthworks exacerbating Kauri dieback disease.
EW-R42	Earthworks – general [000078] {000047, 000051, 000033, 000036}	
OSZ – Open space zone	<p>(1) Activity status: PER</p> <p>Where:</p> <p>(a) Earthworks for purposes other than creating a building platform within a site, using imported fill material (excluding cleanfill) must meet all of the following standards:</p> <p>(i) Must not exceed a total volume of 500m³ per site and a depth of 1m;</p> <p>(ii) The slope of the resulting in stable ground must not exceed a maximum slope of 1:2 (1m vertical to 2m horizontal);</p> <p>(iii) Fill material is setback at least 1.5m from all boundaries;</p> <p>(iv) Areas exposed by filling are revegetated to achieve 80% ground cover within 2 months of the completion of the earthworks;</p> <p>(v) Sediment resulting from the filling is retained on the site through implementation and maintenance of erosion and sediment controls and does not enter waterways, open drains or overland flow paths;</p> <p>(vi) Do not divert or change the nature of natural water flows, water bodies or established drainage paths; and</p> <p>(vii) Provided they are not within a kauri root zone.</p>	<p>(2) Activity status where compliance not achieved: RDIS</p> <p>Council’s discretion is restricted to the following matters:</p> <p>(a) Amenity values and landscape effects;</p> <p>(b) Volume, extent and depth of earthworks;</p> <p>(c) Nature of fill material;</p> <p>(d) Contamination of fill material;</p> <p>(e) Location of the earthworks to waterways, significant indigenous vegetation and habitat;</p> <p>(f) Compaction of the fill material;</p> <p>(g) Volume and depth of fill material;</p> <p>(h) Protection of the Hauraki Gulf Catchment Area;</p> <p>(i) Geotechnical stability;</p> <p>(j) Flood risk, including natural water flows and established drainage paths;</p> <p>(k) Land instability, erosion and sedimentation;</p> <p>(l) Proximity to underground services and service connections; and</p> <p>(m) The risk of earthworks exacerbating Kauri dieback disease.</p>
EW-R43	Earthworks – general [000078] {000047, 000036}	
OSZ – Open space zone	<p>(1) Activity status: NC</p> <p>(a) Importation of cleanfill to a site.</p>	

BTZ – Business Tamahere zone

EW-R44	Earthworks – general [000078] {000047, 000051, 000036}	
BTZ – Business	<p>(1) Activity status: PER</p> <p>Where:</p>	<p>(2) Activity status where compliance not achieved: RDIS</p>

<p>Tamahere zone</p>	<p>(a) Earthworks within a site must meet all of the following standards:</p> <p>(i) Earthworks must be located more than 1.5m from infrastructure including a public sewer, open drain, overland flow path or other public service pipe;</p> <p>(ii) Earthworks must not exceed a volume of more than 5000m³ and an area of more than 1000m² within a site;</p> <p>(iii) The height of the resulting cut, filled areas or fill batter face in stable ground, does not exceed 1.5m, with a maximum slope of 1:2 (1 vertical to 2 horizontal);</p> <p>(iv) Areas exposed by earthworks are stabilised to avoid runoff within 1 month and re-vegetated to achieve 80% ground cover within 6 months of cessation of the earthworks;</p> <p>(v) Sediment resulting from the earthworks is retained on the site through implementation and maintenance of erosion and sediment controls and does not enter waterways, open drains or overland flow paths; and</p> <p>(vi) Provided they are not within a kauri root zone.</p>	<p>Council's discretion is restricted to the following matters:</p> <p>(a) Amenity values and landscape effects;</p> <p>(b) Volume, extent and depth of earthworks;</p> <p>(c) Nature of fill material;</p> <p>(d) Contamination of fill material;</p> <p>(e) Location of the earthworks in relation to waterways, significant indigenous vegetation and habitat;</p> <p>(f) Compaction of the fill material;</p> <p>(g) Volume and depth of fill material;</p> <p>(h) Protection of the Hauraki Gulf Catchment Area;</p> <p>(i) Geotechnical stability;</p> <p>(j) Flood risk, including natural water flows and established drainage paths</p> <p>(k) Land instability, erosion and sedimentation;</p> <p>(l) Proximity to underground services and service connections; and</p> <p>(m) The risk of earthworks exacerbating Kauri dieback disease.</p>
<p>EW-R45</p>	<p>Earthworks – general [000078] {000047, 000051, 000036}</p>	
<p>BTZ – Business Tamahere zone</p>	<p>(1) Activity status: PER</p> <p>Where:</p> <p>(a) Earthworks for the purpose of creating a building platform within a site (including the use of imported fill material) that is:</p> <p>(i) Subject to an approved building consent;</p> <p>(ii) The earthworks occur wholly within the footprint of the building;</p> <p>(iii) The earthworks do not within a kauri root zone.</p> <p>(b) For the purposes of this rule, the footprint of the building</p>	<p>(2) Activity status where compliance not achieved: RDIS</p> <p>Council's discretion is restricted to the following matters:</p> <p>(a) Amenity values and landscape effects;</p> <p>(b) Volume, extent and depth of earthworks;</p> <p>(c) Nature of fill material;</p> <p>(d) Contamination of fill material;</p> <p>(e) Location of the earthworks in relation to waterways, significant indigenous vegetation and habitat;</p>

	<p>extends 1.8m from the outer edge of the outside wall.</p> <p>(c) For the purposes of this rule, this exemption does not apply to earthworks associated with retaining walls/structures which are not required for the structural support of the building.</p>	<p>(f) Compaction of the fill material;</p> <p>(g) Volume and depth of fill material;</p> <p>(h) Protection of the Hauraki Gulf Catchment Area;</p> <p>(i) Geotechnical stability;</p> <p>(j) Flood risk, including natural water flows and established drainage paths</p> <p>(k) Land instability, erosion and sedimentation;</p> <p>(l) Proximity to underground services and service connections; and</p> <p>(m) The risk of earthworks exacerbating Kauri dieback disease.</p>
EW-R46	Earthworks – general [000078] {000033, 000047, 000051, 000036}	
<p>BTZ – Business Tamahere zone</p>	<p>(1) Activity status: PER</p> <p>Where:</p> <p>(a) Earthworks using the importation of fill material to a site must meet all of the following standards:</p> <p>(i) Must not exceed a total volume of 500m³ per site and a depth of 1m (excluding backfill);</p> <p>(ii) The slope of the resulting filled area in stable ground must not exceed a maximum slope of 1:2 (1m vertical to 2m horizontal);</p> <p>(iii) Fill material is setback at least 1.5m from all boundaries;</p> <p>(iv) Areas exposed by earthworks are stabilised to avoid runoff within 1 month and revegetated to achieve 80% ground cover within 6 months of the cessation of the earthworks;</p> <p>(v) Sediment resulting from the earthworks is retained on the site through implementation and maintenance of erosion and sediment controls and does not enter waterways, open drains or overland flow paths;</p>	<p>(2) Activity status where compliance not achieved: RDIS</p> <p>Council’s discretion is restricted to the following matters:</p> <p>(a) Amenity values and landscape effects;</p> <p>(b) Volume, extent and depth of earthworks;</p> <p>(c) Nature of fill material;</p> <p>(d) Contamination of fill material;</p> <p>(e) Location of the earthworks in relation to waterways, significant indigenous vegetation and habitat;</p> <p>(f) Compaction of the fill material;</p> <p>(g) Volume and depth of fill material;</p> <p>(h) Protection of the Hauraki Gulf Catchment Area;</p> <p>(i) Geotechnical stability;</p> <p>(j) Flood risk, including natural water flows and established drainage paths</p> <p>(k) Land instability, erosion and sedimentation;</p> <p>(l) Proximity to underground services and service connections;</p> <p>(m) The risk of earthworks exacerbating Kauri dieback disease.</p>

	<p>(vi) Do not divert or change the nature of natural water flows, water bodies or established drainage paths; and</p> <p>(vii) Provided they are not within a kauri root zone.</p>	
--	---	--

HOPZ – Hopuhopu zone

EW-R47	Earthworks – general [000078] {000047, 000051, 000036}	
HOPZ – Hopuhopu zone	<p>(1) Activity status: PER</p> <p>Where:</p> <p>(a) Except as otherwise specified in Advice note 1 and 2 below:</p> <p>(i) Ancillary rural earthworks provided they are not within a kauri root zone;</p> <p>(ii) A farm quarry where the volume of aggregate extracted does not exceed 1000m³ in any single consecutive 12 month period and provided they are not within a kauri root zone.</p> <p>(b) Earthworks ancillary to a conservation activity must meet the following standards:</p> <p>(i) Sediment resulting from the earthworks is managed on the site through implementation and maintenance of erosion and sediment controls and does not enter waterways, open drains or overland flow paths; and</p> <p>(ii) Provided they are not within a kauri root zone.</p>	<p>(2) Activity status where compliance not achieved: RDIS</p> <p>Council’s discretion is restricted to the following matters:</p> <p>(a) Amenity values and landscape effects;</p> <p>(b) Volume, extent and depth of earthworks;</p> <p>(c) Nature of fill material;</p> <p>(d) Contamination of fill material or clean fill;</p> <p>(e) Location of the earthworks to waterways, significant indigenous vegetation and habitat;</p> <p>(f) Compaction of the fill material;</p> <p>(g) Volume and depth of fill material;</p> <p>(h) Geotechnical stability;</p> <p>(i) Flood risk, including natural water flows and established drainage paths;</p> <p>(j) Land instability, erosion and sedimentation;</p> <p>(k) Effects on the safe, effective and efficient operation, maintenance and upgrade of infrastructure, including access;</p> <p>(l) Proximity to underground services and service connections; and</p> <p>(m) The risk of earthworks exacerbating Kauri dieback disease.</p>
EW-R48	Earthworks – general [000078] {000033, 000047, 000051, 000036}	
HOPZ – Hopuhopu zone	<p>(1) Activity status: PER</p> <p>Where:</p> <p>(a) With the exception of earthworks for the activities listed in EW-R47 and EW-R49, earthworks across the whole of the HOPZ – Hopuhopu zone</p>	<p>(2) Activity status where compliance not achieved: RDIS</p> <p>Council’s discretion is restricted to the following matters:</p> <p>(a) Amenity values and landscape effects;</p>

	<p>must meet all of the following standards:</p> <ul style="list-style-type: none"> (i) Cumulatively, do not exceed a volume of more than 2000m³ and an area of more than 4000m² over any single consecutive 12 month period of which imported fill material or cleanfill does not exceed a total volume of 1,000m³ in any single consecutive 12 month period; (ii) The total combined depth of any excavation (excluding drilling) or filling does not exceed 3m above or below natural ground level; (iii) Take place on land with a maximum slope of 1:2 (1 vertical to 2 horizontal); (iv) Earthworks are setback a minimum of 1.5m from all site and zone boundaries; (v) Earthworks are setback 5m horizontally from any waterway, open drain or overland flow path; (vi) Areas exposed by earthworks are stabilised to avoid runoff within 1 month and any remaining bare ground re-vegetated to achieve 80% ground cover within 2 months of the completion of the earthworks or finished with a hardstand surface; (i) Sediment resulting from the earthworks is managed on the site through implementation and maintenance of erosion and sediment controls and does not enter waterways, open drains or overland flow paths; (ii) Do not divert or change the nature of natural water flows, water bodies or established drainage paths; (iii) Earthworks must not result in the site being unable to be 	<ul style="list-style-type: none"> (b) Volume, extent and depth of earthworks; (c) Nature of fill material; (d) Contamination of fill material or clean fill; (e) Location of the earthworks to waterways, significant indigenous vegetation and habitat; (f) Compaction of the fill material; (g) Volume and depth of fill material; (h) Geotechnical stability; (i) Flood risk, including natural water flows and established drainage paths; (j) Land instability, erosion and sedimentation; (k) Effects on the safe, effective and efficient operation, maintenance and upgrade of infrastructure, including access; (l) Proximity to underground services and service connections; and (m) The risk of earthworks exacerbating Kauri dieback disease.
--	--	---

	<p>serviced by gravity sewers; and</p> <p>(iv) Provided they are not within a kauri root zone.</p>	
EW-R49	Earthworks – general [000078] {000047, 000051, 000036}	
HOPZ – Hopuhopu zone	<p>(1) Activity status: PER</p> <p>Where:</p> <p>(a) Earthworks for the purpose of creating a building platform (including the use of imported fill material) that is:</p> <p>(i) Subject to an approved building consent;</p> <p>(ii) The earthworks occur wholly within the footprint of the building;</p> <p>(iii) Provided they are not within a kauri root zone;</p> <p>(iv) For the purposes of this rule, the footprint of the building extends 1.8m from the outer edge of the outside wall; and</p> <p>(v) For the purposes of this rule, this exemption does not apply to earthworks associated with retaining walls/structures which are not required for the structural support of the building.</p>	<p>(2) Activity status where compliance not achieved: RDIS</p> <p>Council’s discretion is restricted to the following matters:</p> <p>(a) Amenity values and landscape effects;</p> <p>(b) Volume, extent and depth of earthworks;</p> <p>(c) Nature of fill material;</p> <p>(d) Contamination of fill material or clean fill;</p> <p>(e) Location of the earthworks to waterways, significant indigenous vegetation and habitat;</p> <p>(f) Compaction of the fill material;</p> <p>(g) Volume and depth of fill material;</p> <p>(h) Geotechnical stability;</p> <p>(i) Flood risk, including natural water flows and established drainage paths;</p> <p>(j) Land instability, erosion and sedimentation;</p> <p>(k) Effects on the safe, effective and efficient operation, maintenance and upgrade of infrastructure, including access; and</p> <p>(l) Proximity to underground services and service connections; and</p> <p>(m) The risk of earthworks exacerbating Kauri dieback disease.</p>

Advice Note 1: The Hopuhopu Archaeological Site map below (Figure 19) indicates an area which contains Maori-made soils and possible borrow pits. Heritage New Zealand Pouhere Taonga should be contacted regarding development in this area and an archaeological assessment to determine the need for an archaeological authority. The Heritage New Zealand Pouhere Taonga Act 2014 protects both recorded and unrecorded archaeological sites.

Advice Note 2: The ‘Indicative Borrow Pit and Maori-Made Soils’ area also coincides with an area known to have contained alligator weed. The Waikato Regional Pest Management Plan 2014-2024 contains rules which relate to the management of alligator weed.

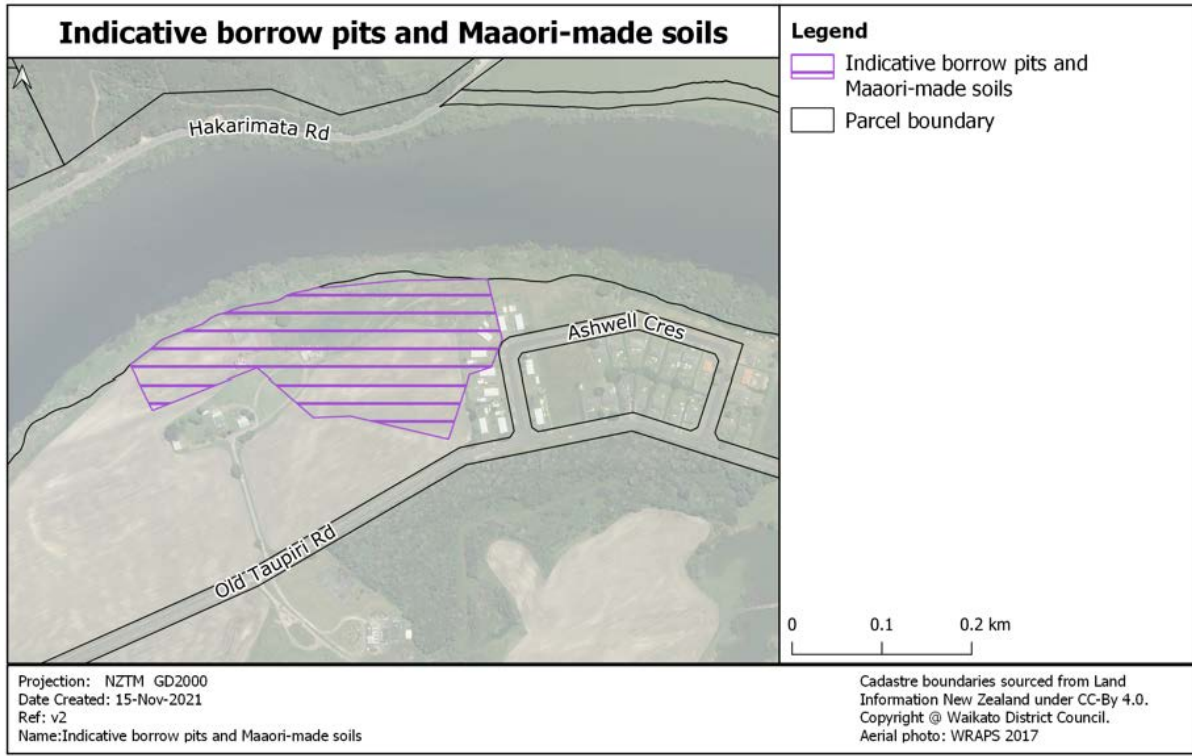


Figure 19 – Indicative borrow pits and Maaori-made soils

KLZ – Kimihia lakes zone

EW-R50	Earthwork – general [000078] {000047, 000051, 000036}	
KLZ – Kimihia lakes zone	<p>(1) Activity status: PER</p> <p>Where:</p> <ul style="list-style-type: none"> (a) Areas exposed by earthworks are re-vegetated must achieve 80% ground cover within 2 months of the completion of the earthworks except where earthworks are for the purposes of creating infrastructure or facilities for recreation, events and access, no re-vegetation is required; (b) Sediment resulting from the earthworks must be retained on the site through implementation and maintenance of erosion and sediment controls and does not enter waterways, open drains or overland flow paths; (c) The importation of fill material to site must meet the following conditions: 	<p>(2) Activity status where compliance not achieved: RDIS</p> <p>Council’s discretion is restricted to the following matters:</p> <ul style="list-style-type: none"> (a) Contamination of fill material; (b) Location of the earthworks to waterways, significant indigenous vegetation and habitat; (c) Flood risk, including natural water flows and established drainage paths; (d) Land instability, erosion and sedimentation; and (e) Proximity to underground services and service connections; and (f) The risk of earthworks exacerbating Kauri dieback disease.

	<p>(d) Does not restrict the ability for land to drain;</p> <p>(e) Is not located within 1.5m of public sewers, utility services or manholes;</p> <p>(f) The sediment from fill material is retained on the site; and</p> <p>(g) Provided they are not within a kauri root zone.</p>	
--	--	--

MAZ – Mercer airport zone

EW-R51	Earthworks – general [000078] {000047, 000051, 000036}	
MAZ – Mercer airport zone	<p>(1) Activity status: PER</p> <p>Where:</p> <p>(a) Earthworks within the MAZ – Mercer Airport zone must meet all of the following standards:</p> <p>(i) Earthworks must not exceed a volume of more than 1,000m³ in a single calendar year;</p> <p>(ii) Earthworks must not exceed an area of more than 1,000m² in a single calendar year;</p> <p>(iii) The height of the resulting cut or batter face does not exceed 1.5 m with a maximum slope of 1:2 (1 metre vertical to 2 m horizontal);</p> <p>(iv) Areas exposed by the earthworks not covered by buildings or other impervious surfaces are revegetated to achieve 80% ground cover within 2 months of the completion of the earthworks;</p> <p>(v) Sediment is retained on site through implementation and maintenance of erosion and sediment controls and does not enter waterways, open drains or overland flow paths;</p> <p>(vi) Earthworks must not divert or change natural water flows or established drainage paths; and</p>	<p>(2) Activity status where compliance not achieved: RDIS</p> <p>Council’s discretion is restricted to the following matters:</p> <p>(a) Amenity values and landscape effects;</p> <p>(b) Volume, extent and depth of earthworks;</p> <p>(c) Nature of fill material;</p> <p>(d) Contamination of fill material;</p> <p>(e) Location of earthworks relative to waterways;</p> <p>(f) Compaction of fill material;</p> <p>(g) Volume and depth of fill material;</p> <p>(h) Geotechnical stability of fill material;</p> <p>(i) Flood risk;</p> <p>(j) Land instability, erosion and sedimentation; and</p> <p>(k) The risk of earthworks exacerbating Kauri dieback disease.</p>

	(vii) Provided they are not within a kauri root zone.	
EW-R52	Earthworks – general [000078] {000047, 000051, 000036}	
MAZ – Mercer airport zone	<p>(1) Activity status: PER</p> <p>Where:</p> <p>(a) The importation of fill material to the site must meet all of the following standards, in addition to the standards in Rule EW-R51:</p> <p>(v) Earthworks do not exceed a total volume of 500m³ per site and a depth of 1 metre;</p> <p>(vi) Earthworks must be fit for compaction;</p> <p>(vii) The height of the resulting batter face in stable ground must not exceed 1.5 metres with a maximum slope of 1:2 (1m vertical to 2m horizontal);</p> <p>(viii) Earthworks do not restrict the ability of the land to drain;</p> <p>(ix) The sediment from fill material is retained on the site; and</p> <p>(x) Provided they are not within a kauri root zone.</p>	<p>(2) Activity status where compliance not achieved: RDIS</p> <p>Council’s discretion is restricted to the following matters:</p> <p>(a) Amenity values and landscape effects;</p> <p>(b) Volume, extent and depth of earthworks;</p> <p>(c) Nature of fill material;</p> <p>(d) Contamination of fill material;</p> <p>(e) Location of earthworks relative to waterways;</p> <p>(f) Compaction of fill material;</p> <p>(g) Volume and depth of fill material;</p> <p>(h) Geotechnical stability of fill material;</p> <p>(i) Flood risk;</p> <p>(j) Land instability, erosion and sedimentation; and</p> <p>(k) The risk of earthworks exacerbating Kauri dieback disease.</p>

MSRZ – Motorsport and recreation zone

EW-R53	Earthworks – all precincts [000078] {000047, 000033, 000051, 000036}	
MSRZ – Motorsport and recreation zone	<p>(1) Activity status: PER</p> <p>Where:</p> <p>(a) Earthworks within a site must meet all of the following standards:</p> <p>(i) Do not exceed a volume of more than 1000m³ and an area of more than 2000m² over any single consecutive 12-month period;</p> <p>(ii) The total depth of any excavation or filling does not exceed 3m above or below ground level with a maximum slope of 1:2 (1 vertical to 2 horizontal);</p> <p>(iii) Earthworks are setback 1.5m from all boundaries;</p>	<p>(2) Activity status where compliance not achieved: RDIS</p> <p>Council’s discretion is restricted to the following matters:</p> <p>(a) Amenity values and landscape effects;</p> <p>(b) Volume, extent and depth of earthworks;</p> <p>(c) Nature of fill material;</p> <p>(d) Contamination of fill material;</p> <p>(e) Location of the earthworks to waterways, significant indigenous vegetation and habitat;</p> <p>(f) Compaction of the fill material;</p> <p>(g) Volume and depth of fill material;</p> <p>(h) Geotechnical stability;</p>

	<ul style="list-style-type: none"> (iv) Areas exposed by earthworks are re-vegetated to achieve 80% ground cover within 2 months of the completion of the earthworks; (v) Sediment resulting from the earthworks is retained on the site through implementation and maintenance of erosion and sediment controls and does not enter waterways, open drains or overland flow paths; (vi) Do not divert or change the nature of natural water flows, water bodies or established drainage paths; and (vii) Provided they are not within a kauri root zone. 	<ul style="list-style-type: none"> (i) Flood risk, including natural water flows and established drainage paths (j) Land instability, erosion and sedimentation; (k) Proximity to underground services and service connections; and (l) The risk of earthworks exacerbating Kauri dieback disease.
EW-R54	Earthworks – all precincts [000078] {000047, 000051, 000036}	
MSRZ – Motorsport and recreation zone	<p>(1) Activity status: PER</p> <p>Where:</p> <ul style="list-style-type: none"> (a) The importation of fill material to a site shall meet all of the following standards in addition to Rule EW-R53: <ul style="list-style-type: none"> (i) Does not exceed a total volume of 500m³ per site and a depth of 1m; (ii) Is fit for compaction; (iii) The height of the resulting batter face in stable ground must not exceed 1.5m with a maximum slope of 1:2 (1m vertical to 2m horizontal); (iv) Does not restrict the ability for land to drain; (v) Is not located within 1.5m of public sewers, utility services or manholes; (vi) The sediment from fill material is retained on the site; and (vii) Provided they are not within a kauri root zone. 	<p>(2) Activity status where compliance not achieved: RDIS</p> <p>Council’s discretion is restricted to the following matters:</p> <ul style="list-style-type: none"> (a) Amenity values and landscape effects; (b) Volume, extent and depth of earthworks; (c) Nature of fill material; (d) Contamination of fill material; (e) Location of the earthworks to waterways, significant indigenous vegetation and habitat; (f) Compaction of the fill material; (g) Volume and depth of fill material; (h) Geotechnical stability; (i) Flood risk, including natural water flows and established drainage paths (j) Land instability, erosion and sedimentation; (k) Proximity to underground services and service connections; and (l) The risk of earthworks exacerbating Kauri dieback disease.

MTZ – Matangi zone

EW-R55	Earthworks – general [000078] {000047, 000051, 000036}	
MTZ – Matangi zone	<p>(1) Activity status: PER</p> <p>Where:</p> <p>(a) Earthworks within a site must meet the following standards:</p> <ul style="list-style-type: none"> (i) Not exceed a volume of more than 2,500m³; (ii) Not exceed an area of more than 10,000m² within a 12 month period; (iii) Earthworks associated with any activity requiring building consent (including associated site works) shall not exceed 500m³; (iv) any excavation or filling does not exceed a maximum slope of 1:2 (1 vertical to 2 horizontal); (v) Not be located within 1.5m of the KiwiRail designated corridor; (vi) Areas exposed by earthworks are re-vegetated to achieve 80% ground cover within 2 months of the completion of the earthworks, or finished with a hardstand surface; (vii) Sediment resulting from the earthworks is retained on the site through implementation and maintenance of erosion and sediment controls and does not enter waterways, open drains or overland flow paths; and (viii) Do not divert or change the nature of natural water flows, water bodies or onsite disposal systems for wastewater and stormwater; and (ix) Provided they are not within a kauri root zone. 	<p>(2) Activity status where compliance not achieved: RDIS</p> <p>Council’s discretion is restricted to the following matters:</p> <ul style="list-style-type: none"> (a) Amenity values and landscape effects; (b) Volume, extent and depth of earthworks; (c) Nature of fill material; (d) Effects on waterbodies, and significant indigenous vegetation and habitat; (e) Compaction of the fill material; (f) Volume and depth of fill material; (g) Geotechnical stability; (h) Flood risk, including natural water flows and established drainage paths; (i) Land instability, erosion and sedimentation; (j) Proximity to underground services and service connections; (k) Effects on onsite disposal systems for wastewater and stormwater; and (l) The risk of earthworks exacerbating Kauri dieback disease.
EW-R56	Earthworks – general [000078] {000047, 000051, 000036}	
MTZ – Matangi zone	<p>(1) Activity status: PER</p> <p>Where:</p>	<p>(2) Activity status where compliance not achieved: RDIS</p>

	<p>(a) Earthworks for the purpose of creating a building platform within a site, using imported fill material (excluding cleanfill), must meet the following standards:</p> <p>(i) Must not exceed a total volume of 500m³;</p> <p>(ii) The slope of the resulting filled area in stable ground must not exceed a maximum slope of 1:2 (1 vertical to 2 horizontal);</p> <p>(iii) Areas exposed by filling are revegetated to achieve 80% ground cover within 2 months of the completion of the earthworks, or finished with a hardstand surface;</p> <p>(iv) Sediment resulting from the filling is retained on the site through implementation and maintenance of erosion and sediment controls and does not enter waterways, open drains or overland flow paths;</p> <p>(v) Do not divert or change the nature of natural water flows, water bodies or established drainage paths, or onsite disposal systems for wastewater and stormwater; and</p> <p>(vi) Provided they are not within a kauri root zone.</p>	<p>Council’s discretion is restricted to the following matters:</p> <p>(a) Amenity values and landscape effects;</p> <p>(b) Volume, extent and depth of earthworks;</p> <p>(c) Nature of fill material;</p> <p>(d) Effects on waterbodies, and significant indigenous vegetation and habitat;</p> <p>(e) Compaction of the fill material;</p> <p>(f) Volume and depth of fill material;</p> <p>(g) Geotechnical stability;</p> <p>(h) Flood risk, including natural water flows and established drainage paths;</p> <p>(i) Land instability, erosion and sedimentation;</p> <p>(j) Proximity to underground services and service connections; and</p> <p>(k) Effects on onsite disposal systems for wastewater and stormwater;</p> <p>(l) The risk of earthworks exacerbating Kauri dieback disease.</p>
--	--	---

RPZ – Rangitahi Peninsula zone

EW-R57	Earthworks – general [000078] {000047, 000051, 000036}	
RPZ – Rangitahi Peninsula zone	<p>(1) Activity status: PER</p> <p>Where:</p> <p>(a) Earthworks within a site must meet all of the following standards:</p> <p>(i) Be located more than 1.5m from a public sewer, open drain, overland flow path or other service pipe;</p> <p>(ii) Not exceed a volume of more than 250m³ and an area</p>	<p>(2) Activity status where compliance not achieved: RDIS</p> <p>Council’s discretion is restricted to the following matters:</p> <p>(a) Amenity values and landscape effects;</p> <p>(b) Volume, extent and depth of earthworks;</p> <p>(c) Nature of fill material;</p> <p>(d) Contamination of fill material;</p>

	<p>of more than 1,000m² within a site;</p> <p>(iii) The height of the resulting cut, filled areas or fill batter face in stable ground, not including any surcharge, does not exceed 2m, with a maximum slope of 1:2 (1 vertical to 2 horizontal);</p> <p>(iv) Areas exposed by earthworks are re-vegetated to achieve 80% ground cover within 2 months of the completion of the earthworks;</p> <p>(v) Sediment resulting from the earthworks is retained on the site through implementation and maintenance of erosion and sediment controls and does not enter waterways, open drains or overland flow paths;</p> <p>(vi) Do not divert or change the nature of natural water flows, water bodies or established drainage paths;</p> <p>(vii) Do not result in the site being unable to be serviced by gravity sewers; and</p> <p>(viii) Provided they are not within a kauri root zone.</p>	<p>(e) Location of the earthworks to waterways, significant indigenous vegetation and habitat;</p> <p>(f) Compaction of the fill material;</p> <p>(g) Volume and depth of fill material;</p> <p>(h) Geotechnical stability;</p> <p>(i) Flood risk, including natural water flows and established drainage paths</p> <p>(j) Land instability, erosion and sedimentation;</p> <p>(k) Proximity to underground services and service connections;</p> <p>(l) Traffic movements to and from the site; and</p> <p>(m) Consistency with the Rangitahi Peninsula Structure Plan; and</p> <p>(n) The risk of earthworks exacerbating Kauri dieback disease.</p>
EW-R58	Earthworks – general [000078] {000047, 000051, 000036}	
RPZ – Rangitahi Peninsula zone	<p>(1) Activity status: PER</p> <p>Where:</p> <p>(a) The importation of fill material to a site must meet the following conditions standards, in addition to the standards in EW-R57:</p> <p>(i) Does not exceed a total volume of 500m³ per site and a depth of 1m;</p> <p>(ii) Is fit for compaction;</p> <p>(iii) The height of the resulting batter face in stable ground must not exceed 1.5m with a maximum slope of 1:2 (1m vertical to 2m horizontal);</p> <p>(iv) Does not restrict the ability for land to drain;</p>	<p>(2) Activity status where compliance not achieved: RDIS</p> <p>Council’s discretion is restricted to the following matters:</p> <p>(a) Amenity values and landscape effects;</p> <p>(b) Volume, extent and depth of earthworks;</p> <p>(c) Nature of fill material;</p> <p>(d) Contamination of fill material;</p> <p>(e) Location of the earthworks to waterways, significant indigenous vegetation and habitat;</p> <p>(f) Compaction of the fill material;</p> <p>(g) Volume and depth of fill material;</p> <p>(h) Geotechnical stability;</p>

	<ul style="list-style-type: none"> (v) Is not located within 1.5m of public sewers, utility services or manholes; and (vi) The sediment from fill material is retained on the site; and (vii) Provided they are not within a kauri root zone. 	<ul style="list-style-type: none"> (i) Flood risk, including natural water flows and established drainage paths (j) Land instability, erosion and sedimentation; (k) Proximity to underground services and service connections; (l) Traffic movements to and from the site; and (m) Consistency with the Rangitahi Peninsula Structure Plan; and (n) The risk of earthworks exacerbating Kauri dieback disease.
--	--	---

TKAZ – Te Kowhai airpark zone

EW-R59	Earthworks – all precincts [000078] {000047, 000051, 000036}	
TKAZ – Te Kowhai airpark zone	<p>(1) Activity status: PER</p> <p>Where:</p> <ul style="list-style-type: none"> (a) In all precincts, earthworks within a site must meet all of the following standards: <ul style="list-style-type: none"> (i) Earthworks must be located more than 1.5m either side of a public sewer, open drain, overland flowpath or other service pipe; (ii) Earthworks must not exceed a volume of more than 1,000m³ in a single calendar year; (iii) Earthworks must not exceed an area of more than 1,000m² in a single calendar year; (iv) The height of the resulting cut or batter face does not exceed 1.5m with a maximum slope of 1:2 (1m vertical to 2m horizontal); (v) Areas exposed by the earthworks not covered by buildings or other impervious surfaces are re-vegetated to achieve 80% ground cover within 2 months of the completion of the earthworks; (vi) Sediment is retained on the site through implementation 	<p>(2) Activity status where compliance not achieved: RDIS</p> <p>Council's discretion is restricted to the following matters:</p> <ul style="list-style-type: none"> (a) Amenity values and landscape effects; (b) Volume, extent and depth of earthworks; (c) Nature of fill material; (d) Contamination of fill material; (e) Location of the earthworks to waterways, significant indigenous vegetation and habitat; (f) Compaction of the fill material; (g) Volume and depth of fill material; (h) Geotechnical stability; (i) Flood risk, including natural water flows and established drainage paths; (j) Land instability, erosion and sedimentation; (k) Proximity to underground services and service connections; and. (l) Effects on the safe, effective and efficient operation, maintenance and upgrade of infrastructure, including access; and (m) The risk of earthworks exacerbating Kauri dieback disease.

	<p>and maintenance of erosion and sediment controls and does not enter waterways, open drains or overland flow paths; and</p> <p>(vii) Earthworks must not divert or change natural water flows or established drainage paths; and</p> <p>(viii) Provided they are not within a kauri root zone.</p>	
EW-R60	Earthworks – all precincts [000078] {000047, 000051, 000036}	
TKAZ – Te Kowhai airpark zone	<p>(1) Activity status: PER</p> <p>Where:</p> <p>(a) In all precincts, the importation of fill material to a site must meet all of the following standards, in addition to the standards in EW-R59:</p> <p>(i) Earthworks do not exceed a total volume of 20m³ per site and a depth of 1m;</p> <p>(ii) Earthworks must be fit for compaction;</p> <p>(iii) The height of the resulting batter face in stable ground must not exceed 1.5m with a maximum slope of 1:2 (1m vertical to 2m horizontal);</p> <p>(iv) Earthworks do not restrict the ability for land to drain;</p> <p>(v) Earthworks are not located within 1.5m of public sewers, utility services or manholes; and</p> <p>(vi) The sediment from fill material is retained on the site; and</p> <p>(vii) Provided they are not within a kauri root zone.</p>	<p>(2) Activity status where compliance not achieved: RDIS</p> <p>Council's discretion is restricted to the following matters:</p> <p>(a) Amenity values and landscape effects;</p> <p>(b) Volume, extent and depth of earthworks;</p> <p>(c) Nature of fill material;</p> <p>(d) Contamination of fill material;</p> <p>(e) Location of the earthworks to waterways, significant indigenous vegetation and habitat;</p> <p>(f) Compaction of the fill material;</p> <p>(g) Volume and depth of fill material;</p> <p>(h) Geotechnical stability;</p> <p>(i) Flood risk, including natural water flows and established drainage paths;</p> <p>(j) Land instability, erosion and sedimentation;</p> <p>(k) Proximity to underground services and service connections; and.</p> <p>(l) Effects on the safe, effective and efficient operation, maintenance and upgrade of infrastructure, including access; and</p> <p>(m) The risk of earthworks exacerbating Kauri dieback disease.</p>