

IN THE MATTER of the Resource Management Act 1991
("RMA" or "the Act")

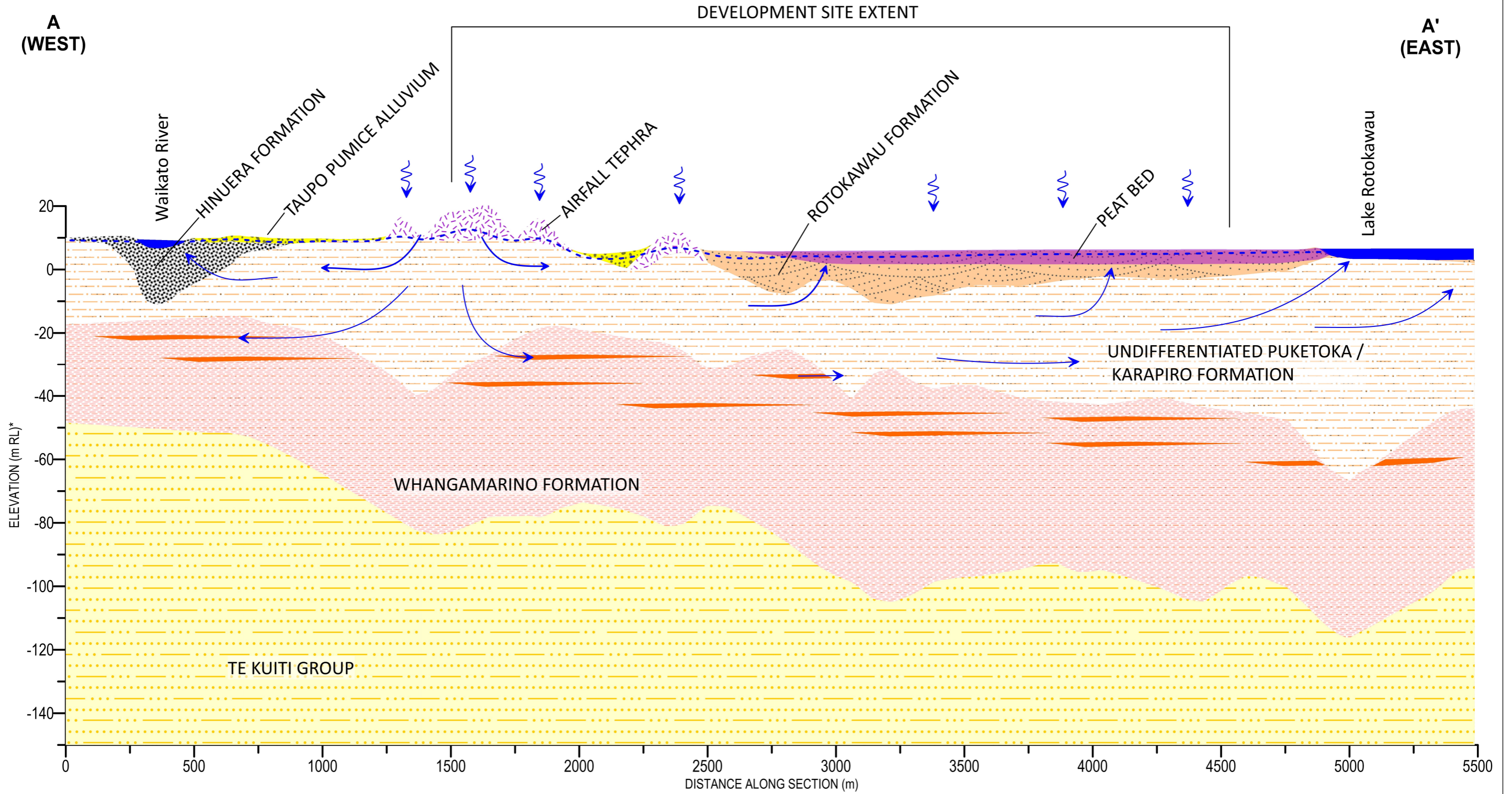
AND

IN THE MATTER of a submission in respect of the
**PROPOSED WAIKATO DISTRICT
PLAN** by **AMBURY PROPERTIES
LIMITED** pursuant to Clause 6 of
Schedule 1 of the Act

**EVIDENCE OF DAVID STAFFORD
ATTACHMENTS**

ATTACHMENT A

**HYDROGEOLOGICAL CONCEPTUAL MODEL CROSS-SECTION (A-A') &
HYDROGEOLOGICAL CONCEPTUAL MODEL CROSS-SECTION (B-B')**

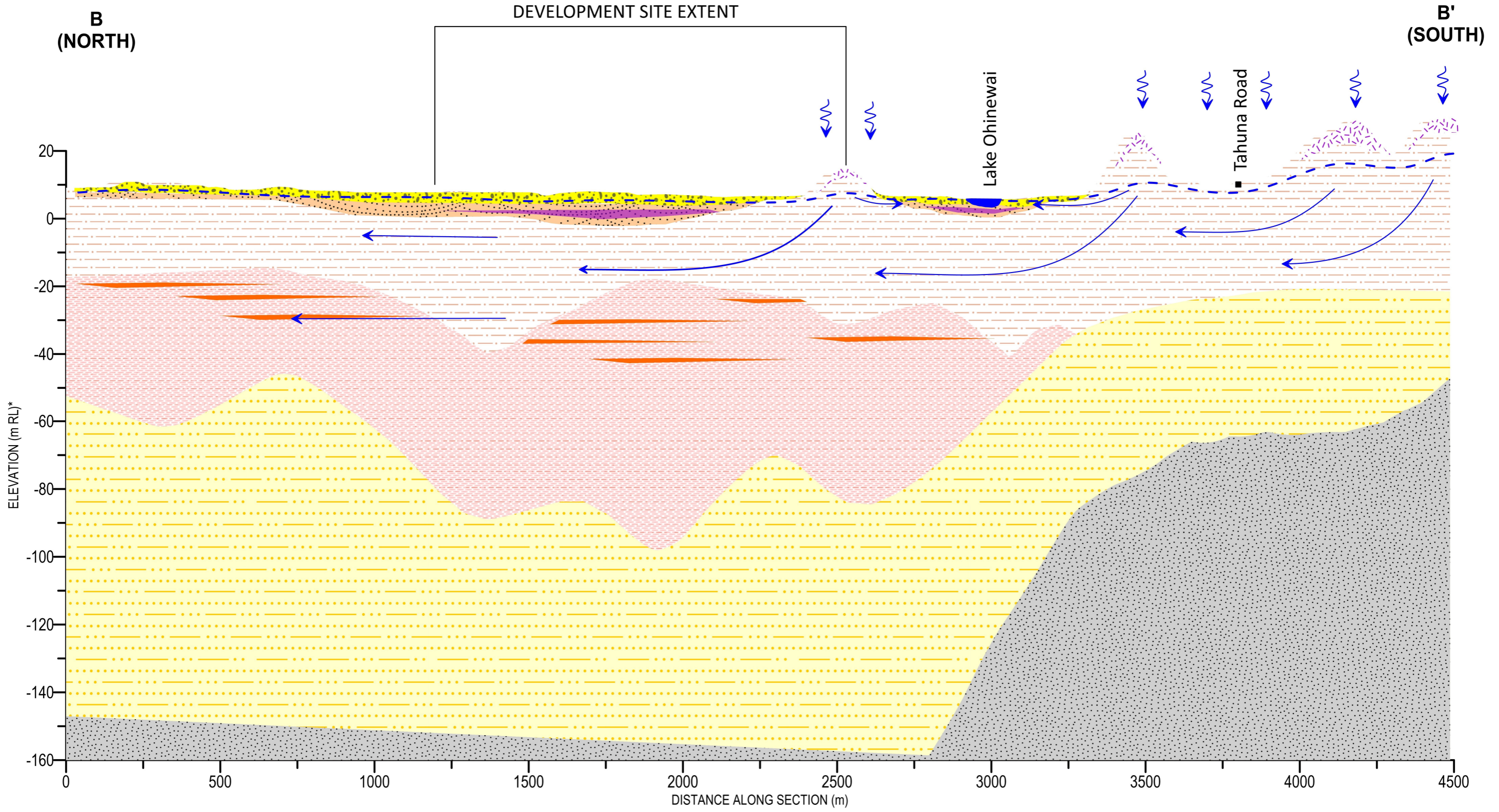


CROSS SECTION KEY

	TE KUITI GROUP		ROKAWAU FORMATION		TAUPO PUMICE ALLUVIUM		INFERRED GROUNDWATER FLOW DIRECTION
	WHANGAMARINO FORMATION		PEAT BED (ROKAWAU FORMATION)		AIRFALL TEPHRA		RAINFALL RECHARGE
	UNDIFFERENTIATED PUKETOKA / KARAPIRO FORMATIONS		HUNUERA FORMATION				INFERRED GROUNDWATER LEVEL

**Vertical exaggeration ~10x*

FIGURE 1: HYDROGEOLOGICAL CONCEPTUAL MODEL CROSS-SECTION (A-A')



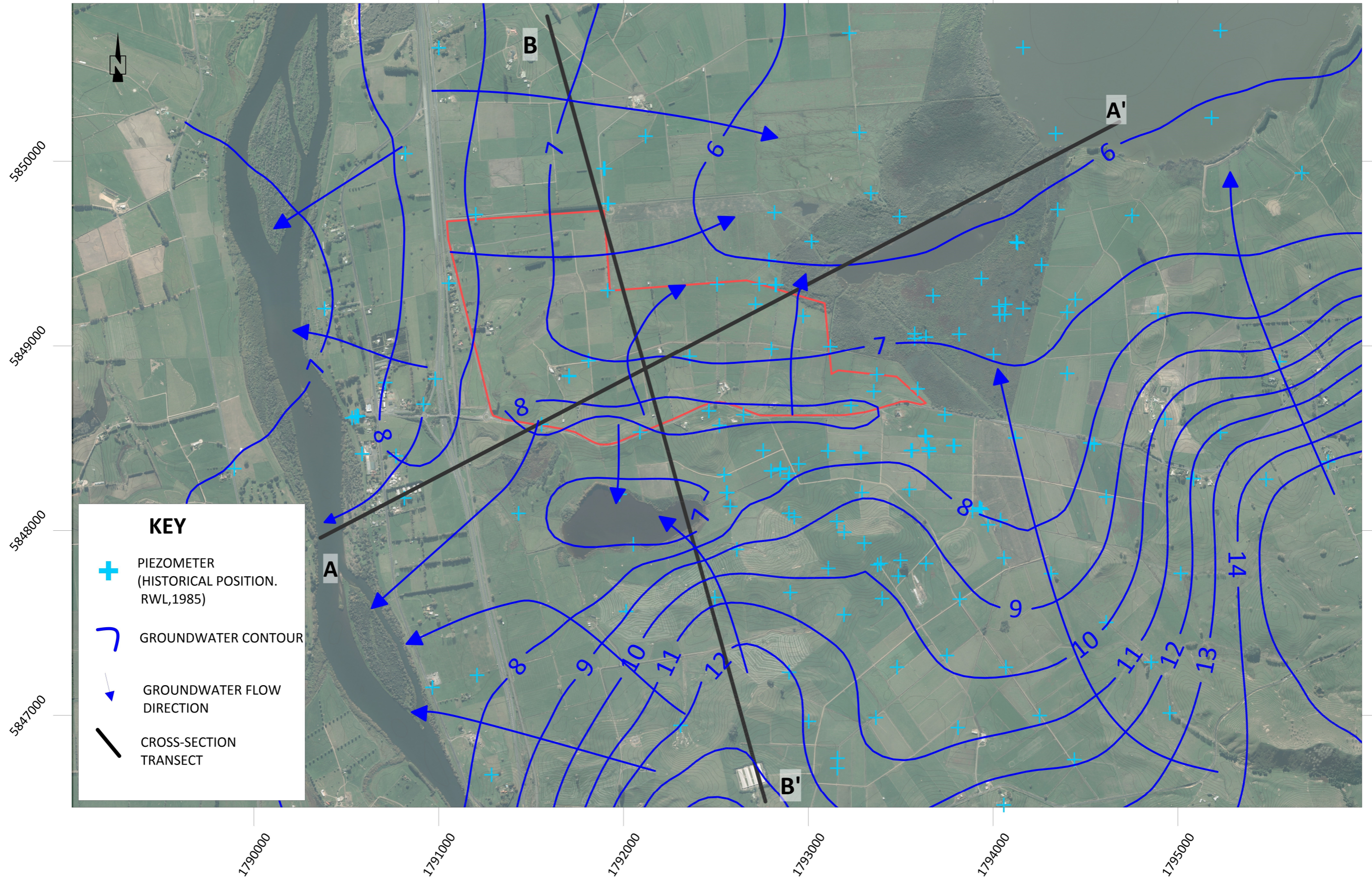
CROSS SECTION KEY			
	TE KUITI GROUP		ROKOKAWAU FORMATION
	WHANGAMARINO FORMATION		PEAT BED (ROKOKAWAU FORMATION)
	UNDIFFERENTIATED PUKETOKAI/ KARAPIRO FORMATIONS		HUNUERA FORMATION
	TAUPO PUMICE ALLUVIUM		AIRFALL TEPHRA
			INFERRED GROUNDWATER FLOW DIRECTION
			RAINFALL RECHARGE
			INFERRED GROUNDWATER LEVEL

*Vertical exaggeration ~10x

FIGURE 2: HYDROGEOLOGICAL CONCEPTUAL MODEL CROSS-SECTION (B-B')

ATTACHMENT B

**GROUNDWATER PIEZOMETRIC CONTOURS AND GROUNDWATER
FLOW DIRECTION**



SOURCE:
 1. AERIAL IMAGERY (FLOWN 2012) SOURCED FROM THE LINZ DATA SERVICE WWW.LINZ.GOV.NZ/ABOUT-LINZ/LINZ-DATA-SERVICE/HELP/USING-LINZ-DATA/ATTRIBUTING-AERIAL-IMAGERY-DATA AND LICENCED FOR RE-USE UNDER THE CREATIVE COMMONS ATTRIBUTION 3.0 NEW ZEALAND LICENCE.
 2. CADASTRAL AND TOPOGRAPHICAL INFORMATION DERIVED FROM LINZ DATA.

FIGURE 3: GROUNDWATER PIEZOMETRIC CONTOURS AND GROUNDWATER FLOW DIRECTION