

**Attachment 2 to Council Rebuttal Evidence**  
**Geoheritage Sites listed in GSNZ Submission [8]**

**Daff Road Jurassic Plant Beds**

Blue outline = approximate extent of geoheritage site shown in NZ Geopreservation Inventory



- Located in Rural Zone
- Identified as ONF in Schedule 5B of operative Franklin Section
- Not identified within any PWDP landscape overlay
- Red line represents property/title boundary
- One private landowner (not a submitter on geoscience matter in H2IB landscapes topic)

## Kaawa Creek (northern) and Ngatutura Point (southern)

Blue outline = approximate extent of geoheritage site shown in NZ Geopreservation Inventory



- Located in Rural Zone
- Identified as ONF in Schedule 5B of operative Franklin Section
- Not identified within any PWDP landscape overlay
- Grey lines represent lot/title boundaries
- Public land and two private landowners (not submitters on geoscience matter in H21B landscapes topic)

## Kellyville Tuff Ring

Blue outline = approximate extent of geoheritage site shown in NZ Geopreservation Inventory



- Located in Village, Rural and Reserve Zones
- Includes public land (road, state highway and Mercer cemetery)
- Identified as ONF in Schedule 5B of operative Franklin Section
- Not identified within any PWDP landscape overlay
- Grey lines represent lot/title boundaries
- Approximately 68 private landowners (not submitters on geoscience matter in H2I8 landscapes topic)



## Onewhero Tuff Ring

Blue outline = approximate extent of geoheritage site shown in NZ Geopreservation Inventory



- Located in Village and Rural Zones
- Includes public land (road)
- Identified as ONF in Schedule 5B of operative Franklin Section
- Identified as SAL in PWDP
- Purple lines represent lot/title boundaries
- Approximately 43 private landowners (not submitters on geoscience matter in H2IB landscapes topic)

## Moeweka Quarry Jurassic Fauna

Blue outline = approximate extent of geoheritage site shown in NZ Geopreservation Inventory



- Located in Rural Zone
- Includes public land (road)
- Identified as ONF in Schedule 5B of operative Franklin Section
- Not identified in any PWDP landscape overlay
- Grey lines represent lot/title boundaries
- 2 private landowners (not submitters on geoscience matter in H2IB landscapes topic)

## Opuatia Cliff Jurassic Fauna

Blue outline = approximate extent of geoheritage site shown in NZ Geopreservation Inventory



- Located in Rural Zone
- Identified as ONF in Schedule 5B of operative Franklin Section
- Not identified in any PWDP landscape overlay
- One private landowner (not a submitter on geoscience matter in H2IB landscapes topic)



## Port Waikato to Tuakau Bridge Road Jurassic Section

Blue outline = approximate extent of geoheritage site shown in NZ Geopreservation Inventory



- Located in Rural Zone (including part of the Waikato River)
- Identified as ONF in Schedule 5B of operative Franklin Section
- Not identified in any PWDP landscape overlay
- Grey lines represent lot/title boundaries
- Multiple private landowners (not submitters on geoscience matter in H2IB landscapes topic)

## Pukekawa Scoria Cone

Blue outline = approximate extent of geoheritage site shown in NZ Geopreservation Inventory



- Located in Rural and Village Zone
- Identified as ONF in Schedule 5B of operative Franklin Section
- Grey lines represent lot/title boundaries
- Identified as SAL in PWDP
- 9 private landowners (not submitters on geoscience matter in H2IB landscapes topic)



## Huriwai Beach Jurassic Plant Beds

Blue outline = approximate extent of geoheritage site shown in NZ Geopreservation Inventory



- Located within public land and Rural Zone
- Identified as ONF in Schedule 5B of operative Franklin Section
- Portion identified within NCA overlay in PWDP
- Yellow lines represent lot/title boundaries
- I private landowner (not a submitter on geoscience matter in H2IB landscapes topic)

## Port Waikato Sandspit

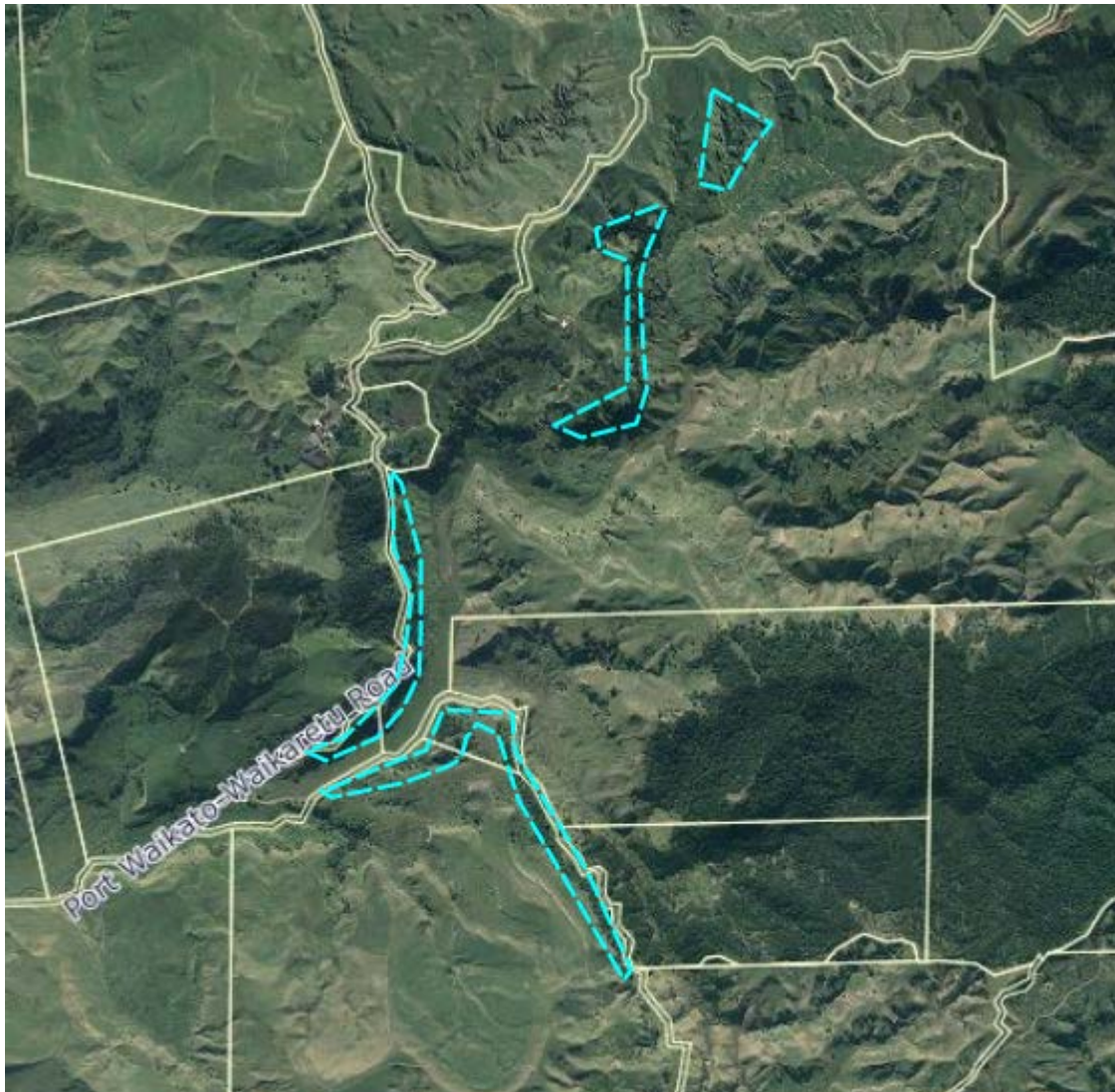
Blue outline = approximate extent of geoheritage site shown in NZ Geopreservation Inventory



- Located within Rural and Village Zones
- Not identified as ONF in Schedule 5B of operative Franklin Section
- Beige lines represent lot/title boundaries
- Part of sandspit included within NCA/SAL overlays in PWDP
- Includes public land (reserve/ beach/Waikato River)
- Approximately 38 private landowner (not submitters on geoscience matters in H21B landscapes topic)

## Ngapuriri natural arch and surrounding Waikawau Valley karst

Blue outline = approximate extent of geoheritage site shown in NZ Geopreservation Inventory



- Located within Rural Zone
- Not identified in Schedule 5B of operative Franklin Section
- Grey lines represent lot/title boundaries
- 3 private landowners (not submitters on geoscience matter in H2IB landscapes topic)



## Huriwai-Waikawau coastal section

Blue outline = approximate extent of geoheritage site shown in NZ Geopreservation Inventory



- Located within public land and Rural Zone
- Not identified in Schedule 5B of operative Franklin Section
- Southern extremity possibly included within NCA overlay in PWDP
- Grey and purple lines represent lot/title boundaries
- 2 private landowners (not submitters on geoscience matter in H2IB landscapes topic)

## Waiwiri Beach unconformity and basal Waitemata group

Blue outline = approximate extent of geoheritage site shown in NZ Geopreservation Inventory



- Located within public land and Rural Zone
- Not identified as ONF in Schedule 5B of operative Franklin Section
- Northern extremity possibly located within NCA overlay in PWDP
- Purple line represents lot/title boundaries
- I private landowner (not a submitter on geoscience matter in H2IB landscapes topic)

## Pukeotahinga Scoria Cone

Blue outline = approximate extent of geoheritage site shown in NZ Geopreservation Inventory



- Located within Rural Zone
- Not identified as ONF in Schedule 5B of operative Franklin Section
- Not identified in any PWDP landscape overlay
- Purple lines represent lot/title boundaries
- 10 private landowners (not submitters on geoscience matters in H21B landscapes topic)



## Onewhero Scoria Cone

Blue outline indicates extent of geoheritage site as per NZ Geopreservation Inventory



- Located within Rural Zone
- Not identified as ONF in Schedule 5B of operative Franklin Section
- Not identified in any landscape overlay in PWDP
- Purple lines represent lot/title boundaries
- 3 private landowners (not submitters on geoscience matter in H2I landscapes topic)

## Kauri Road Scoria Cone

Blue outline = approximate extent of geoheritage site shown in NZ Geopreservation Inventory



- Located within Rural Zone
- Not identified as ONF in Schedule 5B of operative Franklin Section
- Not identified in any PWDP landscape overlay
- Purple lines represent lot/title boundaries
- 5 private landowners (not submitters on geoscience matter in H21B landscapes topic)

## Onepoto Volcanic Cone

Blue outline = approximate extent of geoheritage site shown in NZ Geopreservation Inventory



- Located within public road and Rural Zone
- Not identified as ONF in Schedule 5B of operative Franklin Section
- Not identified in any PWDP landscape overlay
- Purple lines represent lot/title boundaries
- 11 private landowners (not submitters on geoscience matter in H21B landscapes topic)



## Te Kohanga Tuff Ring and Tikorangi Cone

Blue outline = approximate extent of geoheritage sites shown in NZ Geopreservation Inventory



- Located within public road and Rural Zone
- Not identified in Schedule 5B of operative Franklin Section
- Portion possibly included in ONF overlay in PWDP
- Purple lines represent lot/title boundaries
- 14 private landowners (not submitters on geoscience matters in H21B landscapes topic)

## Rasmussen Road Tuff Ring

Blue outline = approximate extent of geoheritage site shown in NZ Geopreservation Inventory



- Located within public road and Rural Zone
- Not identified as ONF in Schedule 5B of operative Franklin Section
- Not identified in any PWDP landscape overlay
- Purple and grey lines represent lot/title boundaries
- 12 private landowners (not submitters on geoscience matter in H21B landscapes topic)



## Waiuku Volcanic Cone

Blue outline = approximate extent of geoheritage site shown in NZ Geopreservation Inventory



- Located within public road and Rural Zone
- Not identified as ONF in Schedule 5B of operative Franklin Section
- Not identified in any PWDP landscape overlay
- Purple and grey lines represent lot/title boundaries
- 16 private landowners (not submitters on geoscience matter in H21B landscapes topic)

## Pokeno Scoria Cone

Blue outline = approximate extent of geoheritage site shown in NZ Geopreservation Inventory



- Located within Rural Zone
- Not identified as ONF in Schedule 5B of operative Franklin Section
- Not identified in any PWDP landscape overlay
- Purple and grey lines represent lot/title boundaries
- 7 private landowners and DoC land (not submitters on geoscience matter in H21B landscapes topic)

## Serpell Road Tuff Ring

Blue outline = approximate extent of geoheritage site shown in NZ Geopreservation Inventory



- Located within Rural Zone
- Not identified as ONF in Schedule 5B of operative Franklin Section
- Not identified in any PWDP landscape overlay
- Purple and grey lines represent lot/title boundaries
- 3 private landowners (not submitters on geoscience matter in H2IB landscapes topic)



## Puketoka Conglomerate

Blue outline = approximate extent of geoheritage site shown in NZ Geopreservation Inventory



- Located within Rural Zone
- Not identified in operative Waikato Section
- Not identified in any PWDP landscape overlay
- Purple lines represent lot/title boundaries
- 2 private landowners (not submitters on geoscience matter in H2IB landscapes topic)

## Waikorea Hot Springs

Blue outline = approximate extent of geoheritage site shown in NZ Geopreservation Inventory



- Located within Rural Zone
- Not identified in operative Waikato Section
- Not identified in any PWDP landscape overlay
- Purple lines represent lot/title boundaries
- I private landowner (not a submitter on geoscience matter in H21B landscapes topic)

## Gibsons Beach Unconformity and Fossil Karst

Blue outline = approximate extent of geoheritage site shown in NZ Geopreservation Inventory

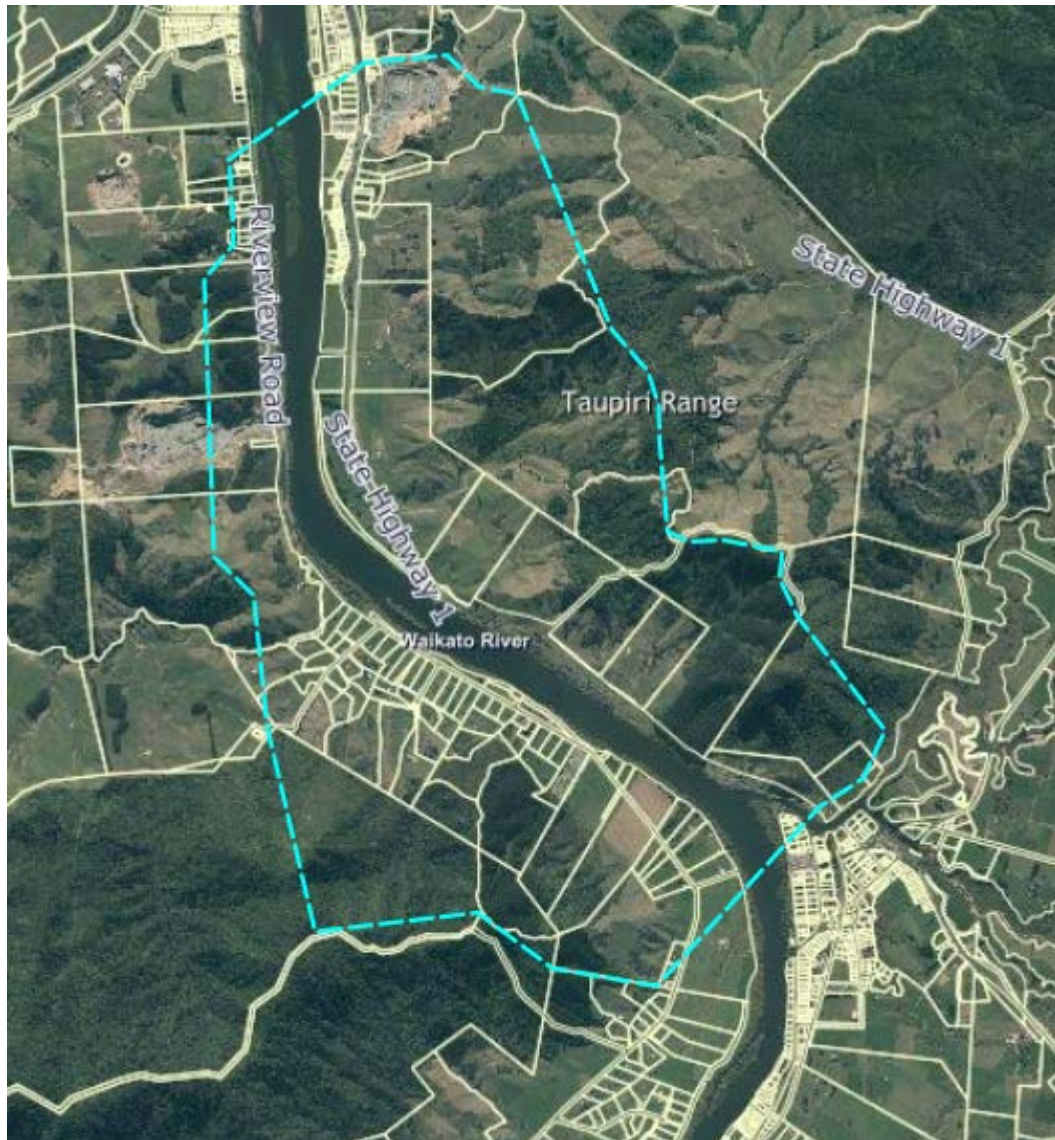


- Located within public land and Rural Zone
- Not identified in operative Waikato Section
- Portions possibly located within NCA/SAL overlays in PWDP
- Purple lines represent lot/title boundaries
- I private landowner (not a submitter on geoscience matter in H2IB landscapes topic)



## Taupiri Gorge

Blue outline = approximate extent of geoheritage site shown in NZ Geopreservation Inventory



- Located within public land and Rural, Countryside and Residential Zones
- Parts identified in Landscape Policy Area/Ridgeline Policy Area in operative Waikato Section
- Parts identified in ONF and SAL overlays in PWDP
- Grey lines represent lot/title boundaries
- At least 150 private landowners (not submitters on geoscience matter in H2IB landscapes topic)

## Dunphail Bluffs Oligocene Sandstone

Blue outline = approximate extent of geoheritage site shown in NZ Geopreservation Inventory



- Located within Rural Zone
- Not identified in operative Waikato Section
- Not identified in any PWDP landscape overlay
- Grey and purple lines represent lot/title boundaries
- I private landowner (not a submitter on geoscience matter in H2IB landscapes topic)

## Waingaro Hot Springs

Blue outline = approximate extent of geoheritage site shown in NZ Geopreservation Inventory



- Located within Rural Zone
- Not identified in operative Waikato Section
- Not identified in any PWDP landscape overlay
- Purple lines represent lot/title boundaries
- I private landowner (not a submitter on geoscience matter in H2IB landscapes topic)



## Carters Beach Shore Platforms

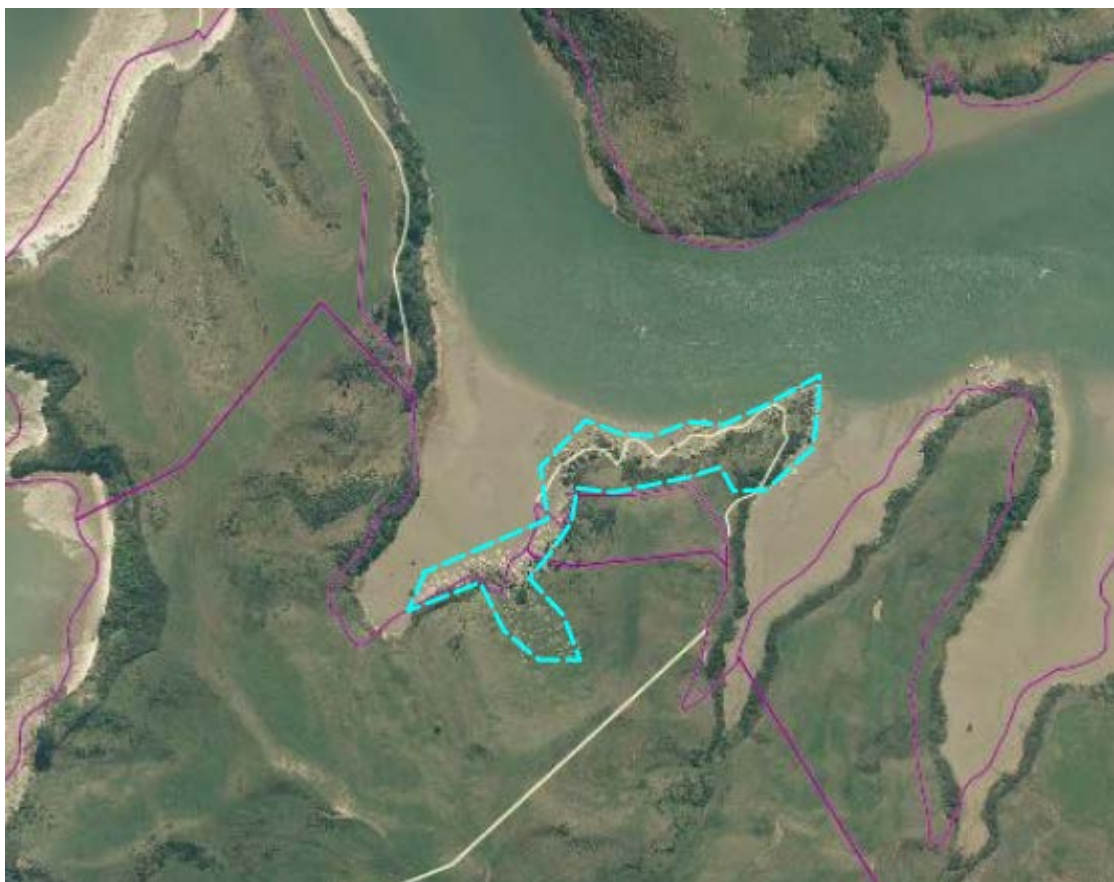
Blue outline = approximate extent of geoheritage site shown in NZ Geopreservation Inventory



- Located on public land outside of WDC's jurisdiction
- Purple lines represent lot/title boundaries

## Raglan Coastal Karst

Blue outline = approximate extent of geoheritage sites shown in NZ Geopreservation Inventory



- Located within public land (Council and DoC) and Rural Zone
- Portion is identified within Landscape Policy Area in operative Waikato
- Portions possibly located within ONF and NCA overlays in PWDP
- Purple lines represent lot/title boundaries
- 3 private landowners (not submitters on geoscience matter in H21B landscapes topic)



## Te Toto Gorge Lava and Pyroclastic Sequence

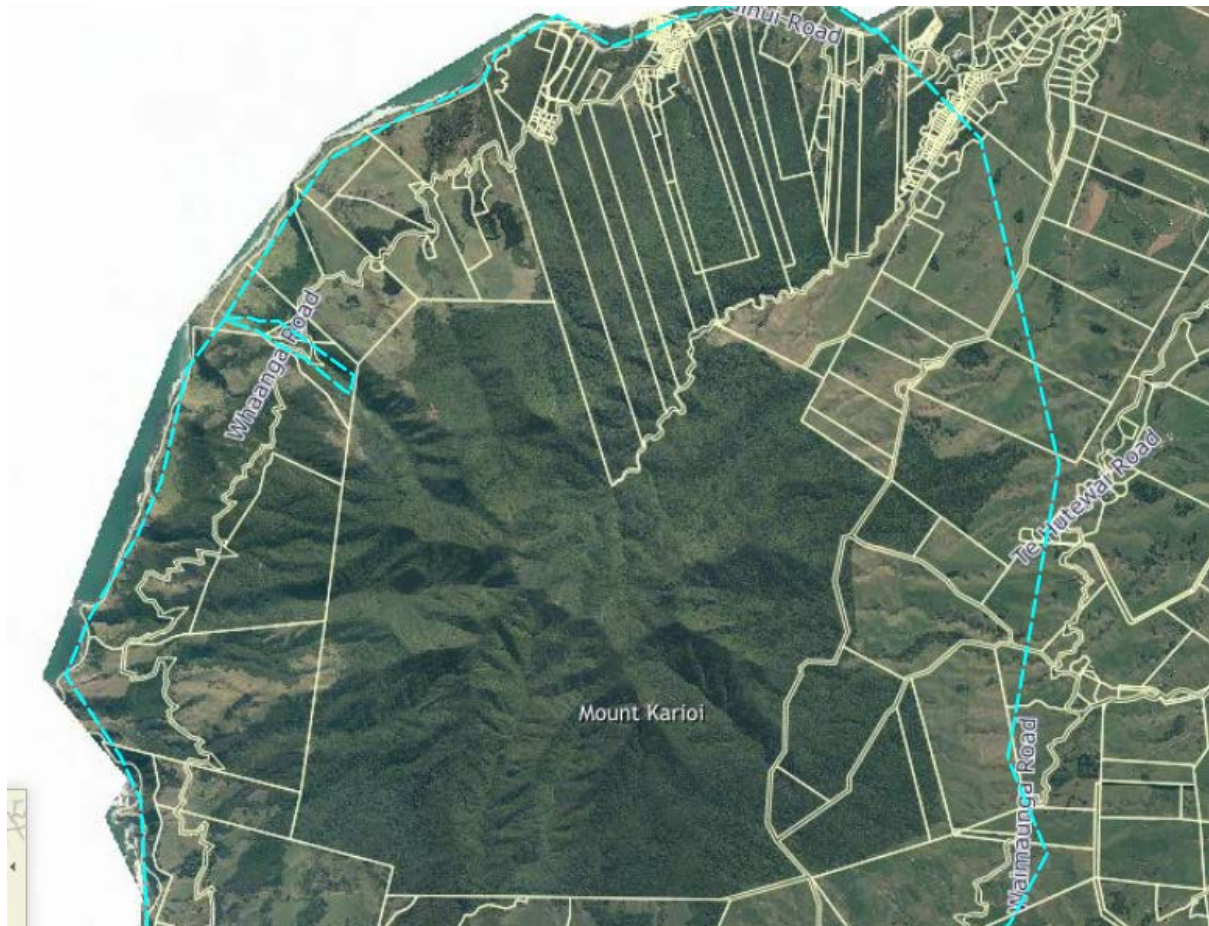
Blue outline = approximate extent of geoheritage site shown in NZ Geopreservation Inventory



- Located on public land (WDC and DoC) in Rural Zone
- Portion identified within Landscape Policy Area in operative Waikato Section
- Portions possibly located in NCA/ONF/ONL overlays in PWDP
- Purple and grey lines represent lot/title boundaries
- 2 private landowners (not submitters on geoscience matter in Hearing 21B landscapes topic)

## Mount Karioi

Blue outline = approximate extent of geoheritage site shown in NZ Geopreservation Inventory



- Located within Rural and Residential Zones
- Portions identified in Landscape Policy Area and Ridgeline Policy Area in Operative Waikato Section
- Identified in NCA/ONL/SAL overlays in PWDP
- Grey lines represent lot/title boundaries
- At least 100 private landowners (not all are submitters on geoscience matter in Hearing 21B landscapes topic)



## Papanui Point Volcanics

Blue outline = approximate extent of geoheritage site shown in NZ Geopreservation Inventory



- Located within public land and Rural Zone
- Portion identified within Landscape Policy Area in operative Waikato Section
- Portion possibly located within SAL overlay in PWDP
- Grey and purple lines represent lot/title boundaries
- I private landowner (not a submitter on geoscience matter in Hearing 21B landscapes topic)



## Bridal Veil Falls Columnar Jointed Basalt

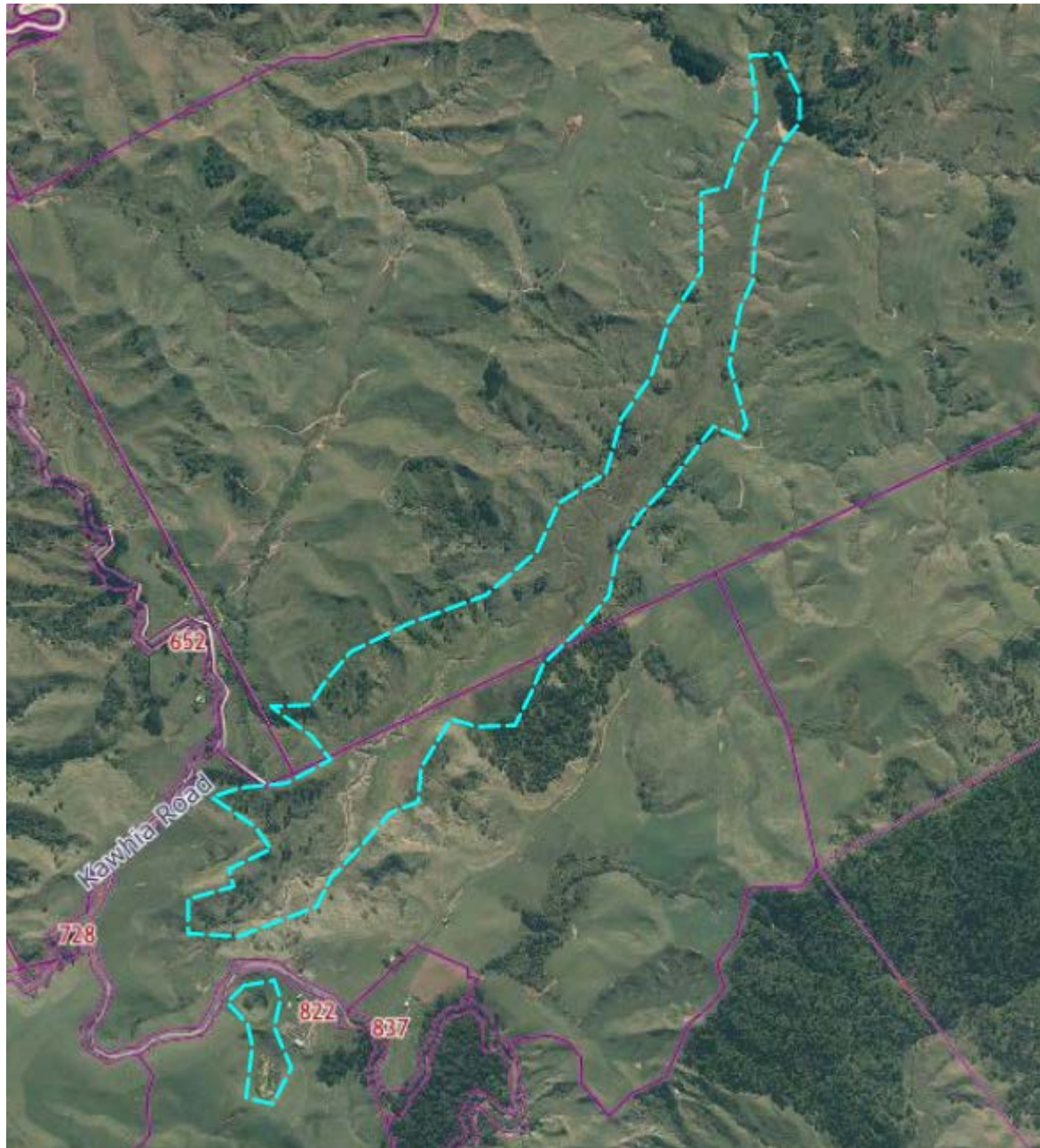
Blue outline = approximate extent of geoheritage site shown in NZ Geopreservation Inventory



- Located within public land (DoC) in Rural Zone
- Identified in Landscape Policy Area in operative Waikato Section
- Identified as ONF in PWDP landscape overlay
- Purple and grey lines represent lot/title boundaries
- DoC is a submitter on geoscience matter in H2IB landscapes topic

## Lake Disappear Blind Valley and Karst

Blue outline = approximate extent of geoheritage site shown in NZ Geopreservation Inventory

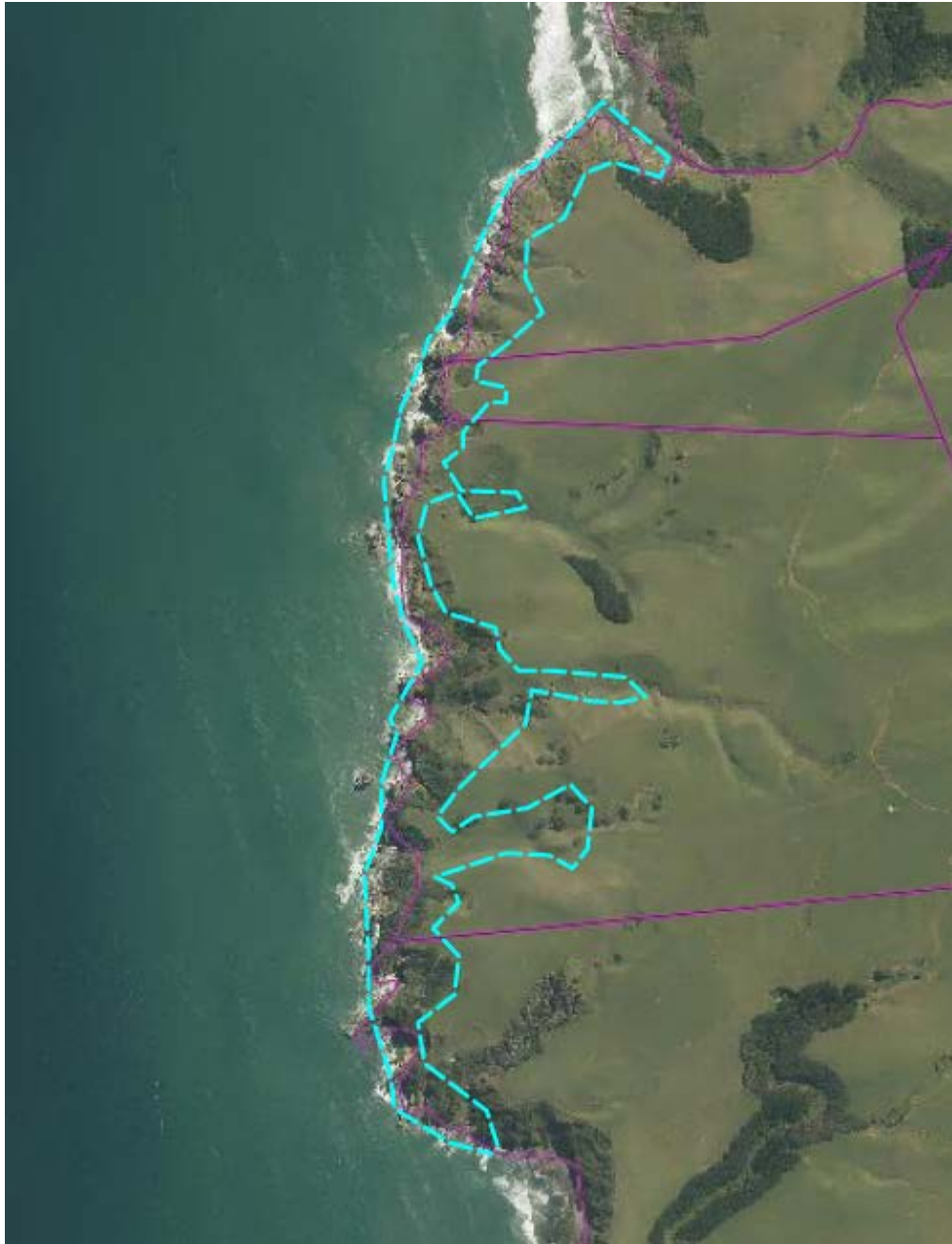


- Located in Rural Zone
- Not identified in operative Waikato Section
- Not identified in any PWDP landscape overlay
- Purple lines represent lot/title boundaries
- 2 private landowners (not submitters on geoscience matter in H2IB landscapes topic)



## Taranaki Point Karst

Blue outline = approximate extent of geoheritage site shown in NZ Geopreservation Inventory



- Located in public land and Rural Zone
- Portion is possibly located within Landscape Policy Area in operative Section
- Portion possibly located in NCA overlay in PWDP
- Purple lines represent title boundaries
- 3 private landowners (not submitters on geoscience matter in H2IB landscapes topic)



## Taranaki Point Volcanics

Blue outline = approximate extent of geoheritage site shown in NZ Geopreservation Inventory



- Located in public land and Rural Zone
- Portion possibly located in NCA overlay in PWDP
- Purple lines represent title boundaries
- One private landowner (not a submitter on geoscience matter in H2IB landscapes topic)

## Aotea Dune Field

Blue outline = approximate extent of geoheritage site shown in NZ Geopreservation Inventory



- Located in public land and Rural Zone
- Portions located within ONF/NCA overlays in PWDP
- Identified within Landscape Policy Area in operative Waikato Section
- Grey lines represent title boundaries
- 6 private landowners (not submitters on geoscience matter in H21B landscapes topic)

## Helectite Hole Karst (Old Mountain Road Karst)

Blue outline = approximate extent of geoheritage site shown in NZ Geopreservation Inventory

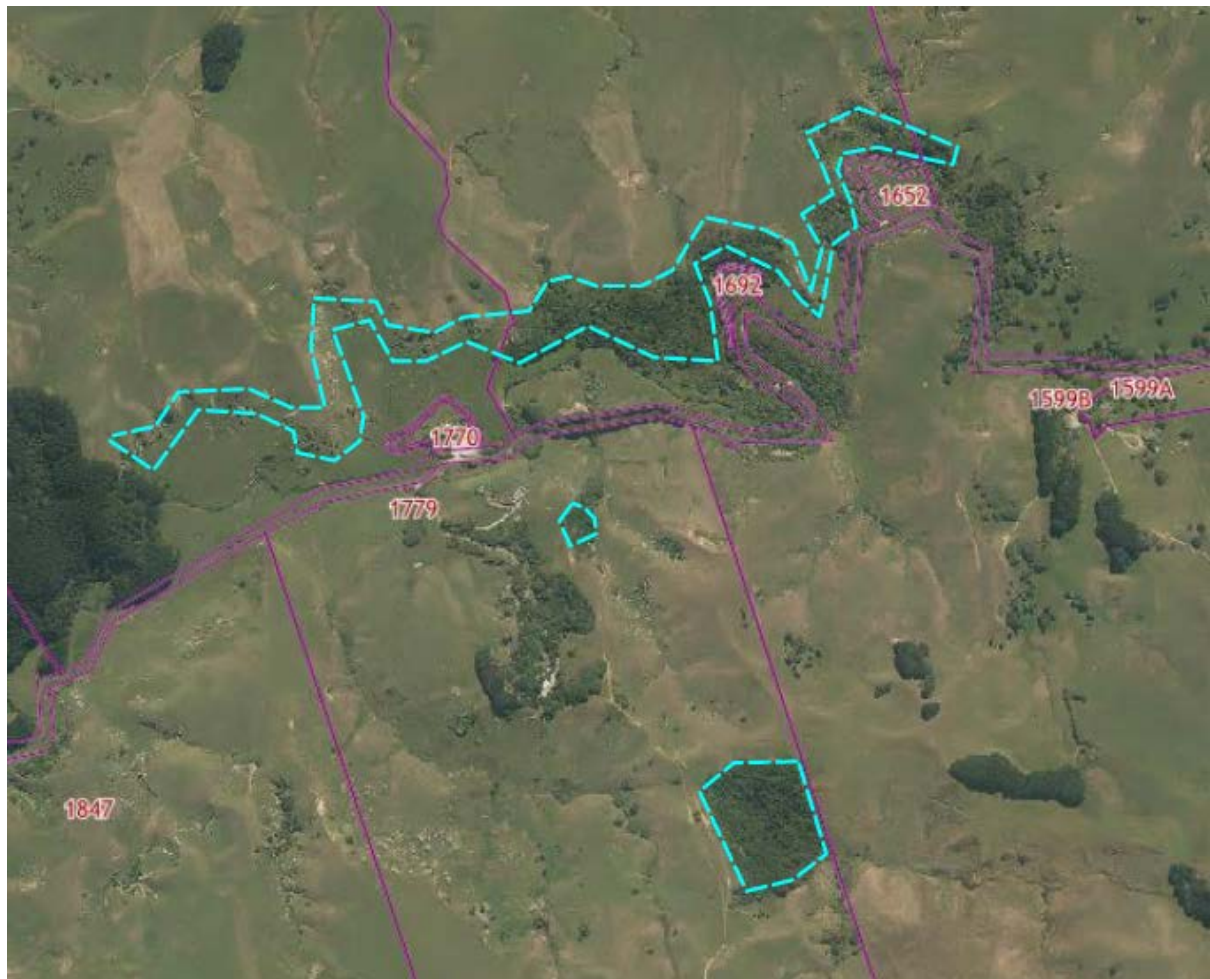


- Located in Rural Zone
- Not identified in any PWDP landscape overlay
- Grey lines represent lot/title boundaries
- I private landowner (not a submitter on geoscience matter in H2IB landscapes topic)



## Nikau Cave and Karst

Blue outline = approximate extent of geoheritage site shown in NZ Geopreservation Inventory



- Located in Rural Zone
- Not identified as ONF in Schedule 5B of operative Franklin Section
- Not identified in any PWDP landscape overlay
- Purple lines represent lot/title boundaries
- 3 private landowners (not submitters on geoscience matter in H21B landscapes topic)