

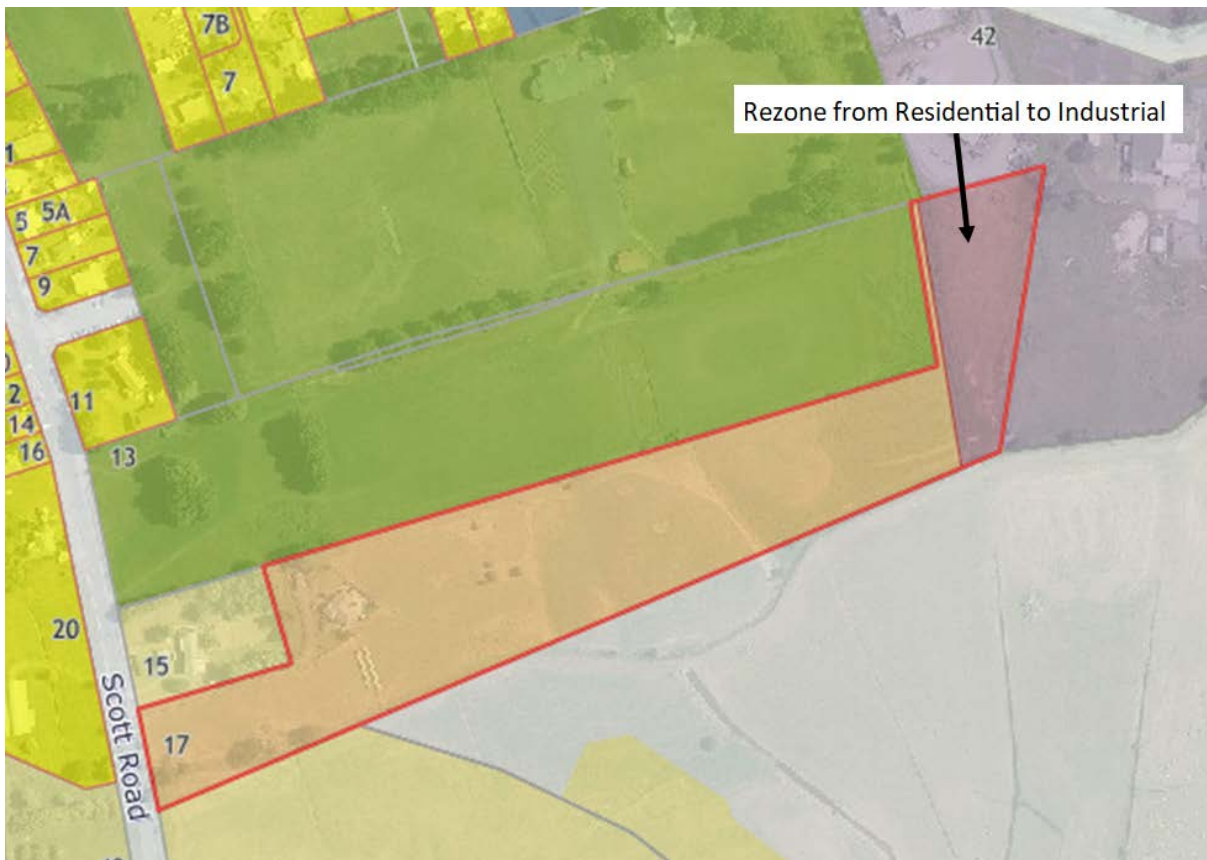
Appendix 4

Recommended Map Amendments

The following two maps indicate the amendments that are recommended for the planning maps in the decision version of the PWDP.

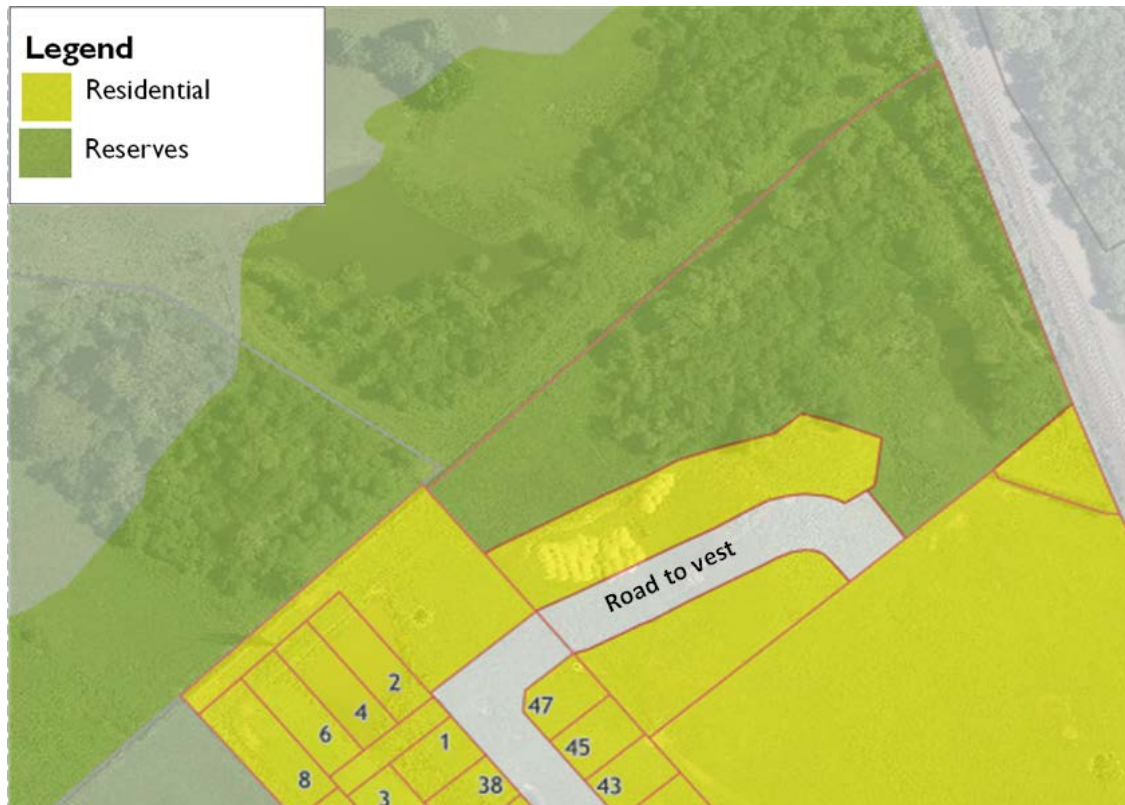
17 Scott Road

The map below indicates the recommendation to rezone the eastern part of 17 Scott Road from Residential (as notified) to Industrial. The zone division aligns with the centre of an existing open drain.



Lot 1 DP 519545 – Eccles Avenue

The map below indicates the recommendation to amend the interface between the Residential Zone and Reserves Zone so that it aligns with newly-surveyed subdivision boundaries. This map also indicates road to vest. The issue of titles for this subdivision is now imminent.



The third recommended map amendment relating to the MDRZ at Te Kauwhata will be provided with Council's rebuttal evidence.