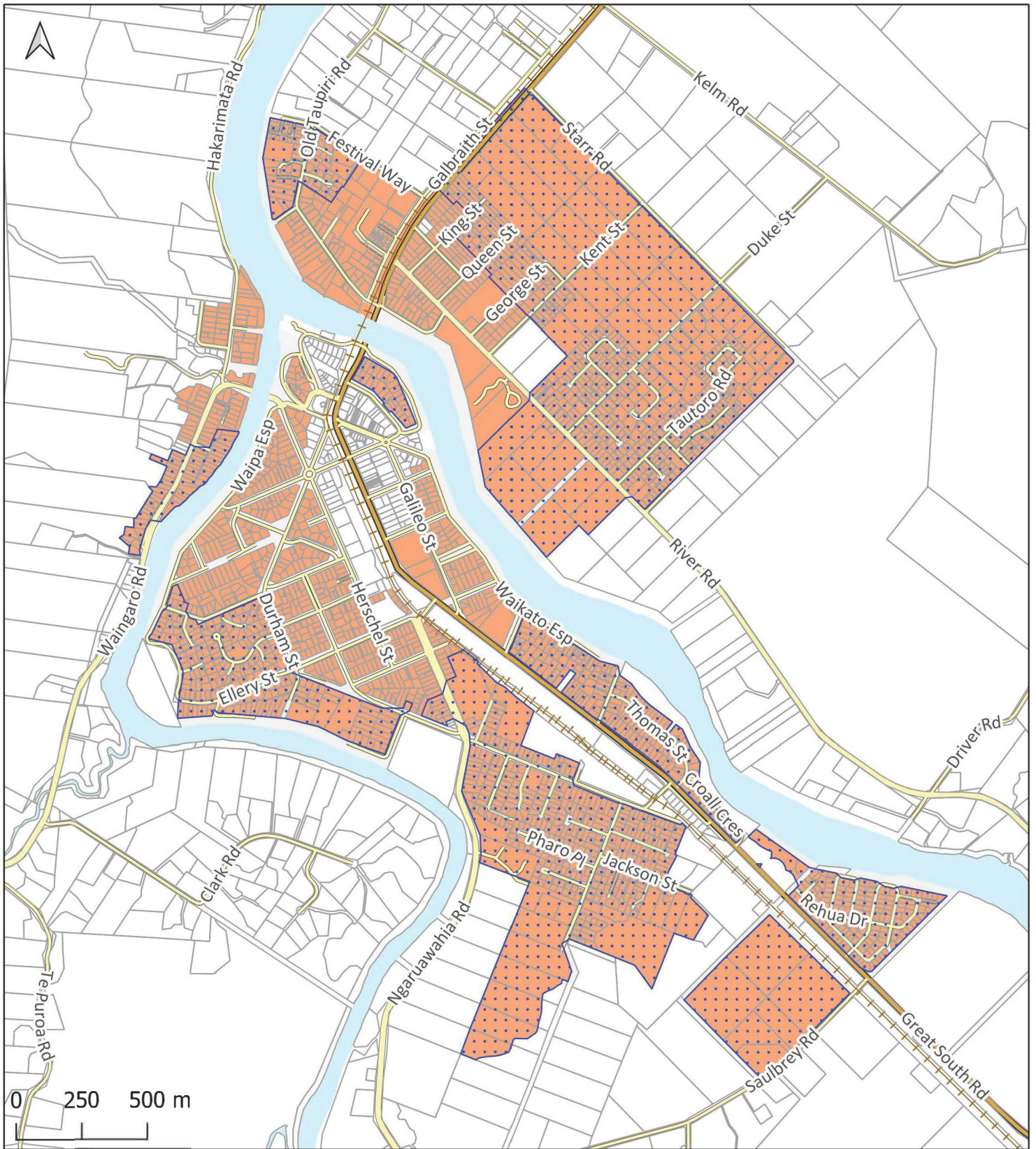


Planning Maps - Council Decision



Legend

 Outer intensification area*

Zone*

 MRZ 2 – Medium density residential zone 2

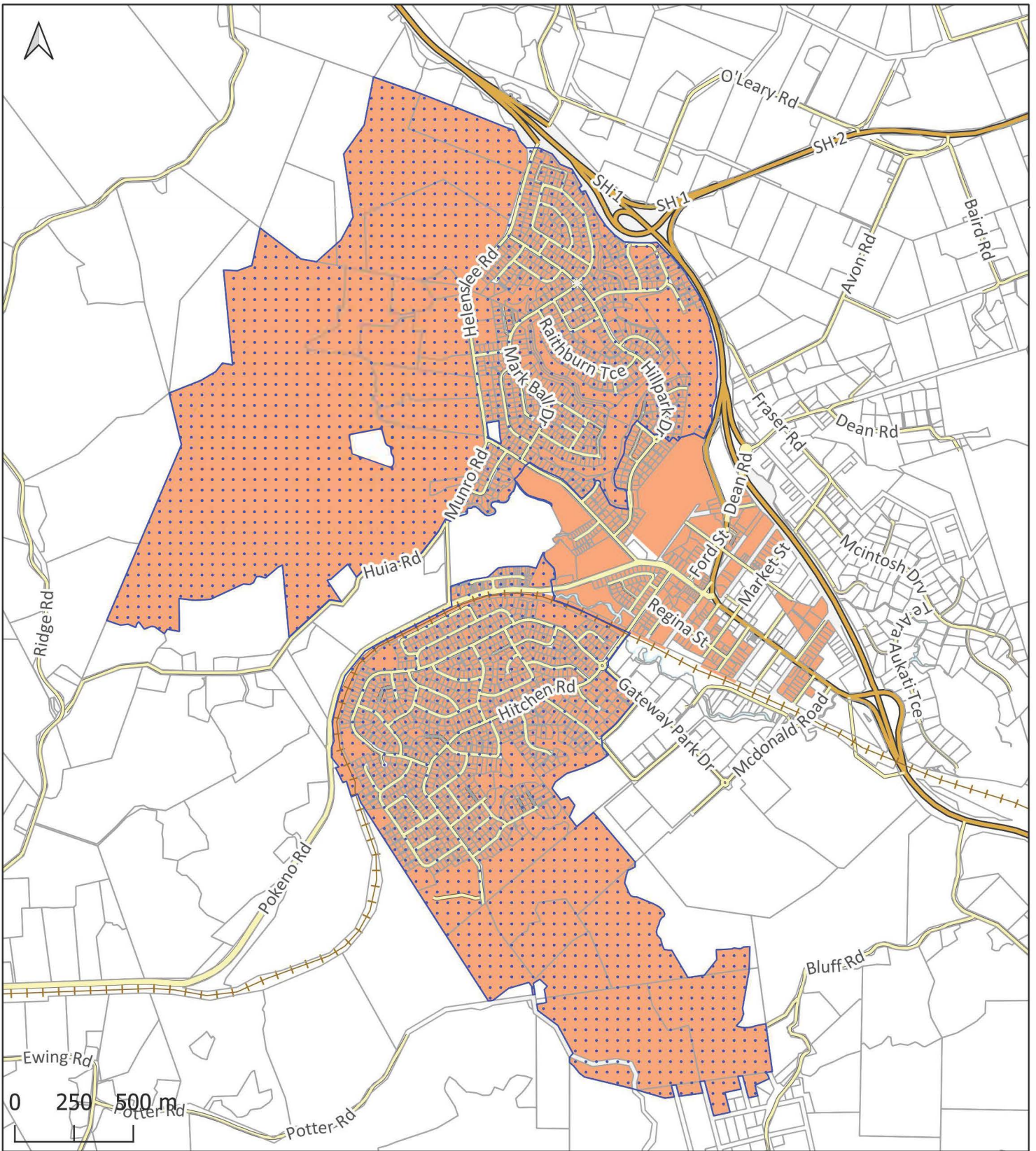
 Road

 Parcel boundaries

 Rail

 Waterbodies

**Note: style/colour of layer not final, subject to change on final district plan maps*



Legend

 Outer intensification area*

Zone*

 MRZ 2 – Medium density residential zone 2

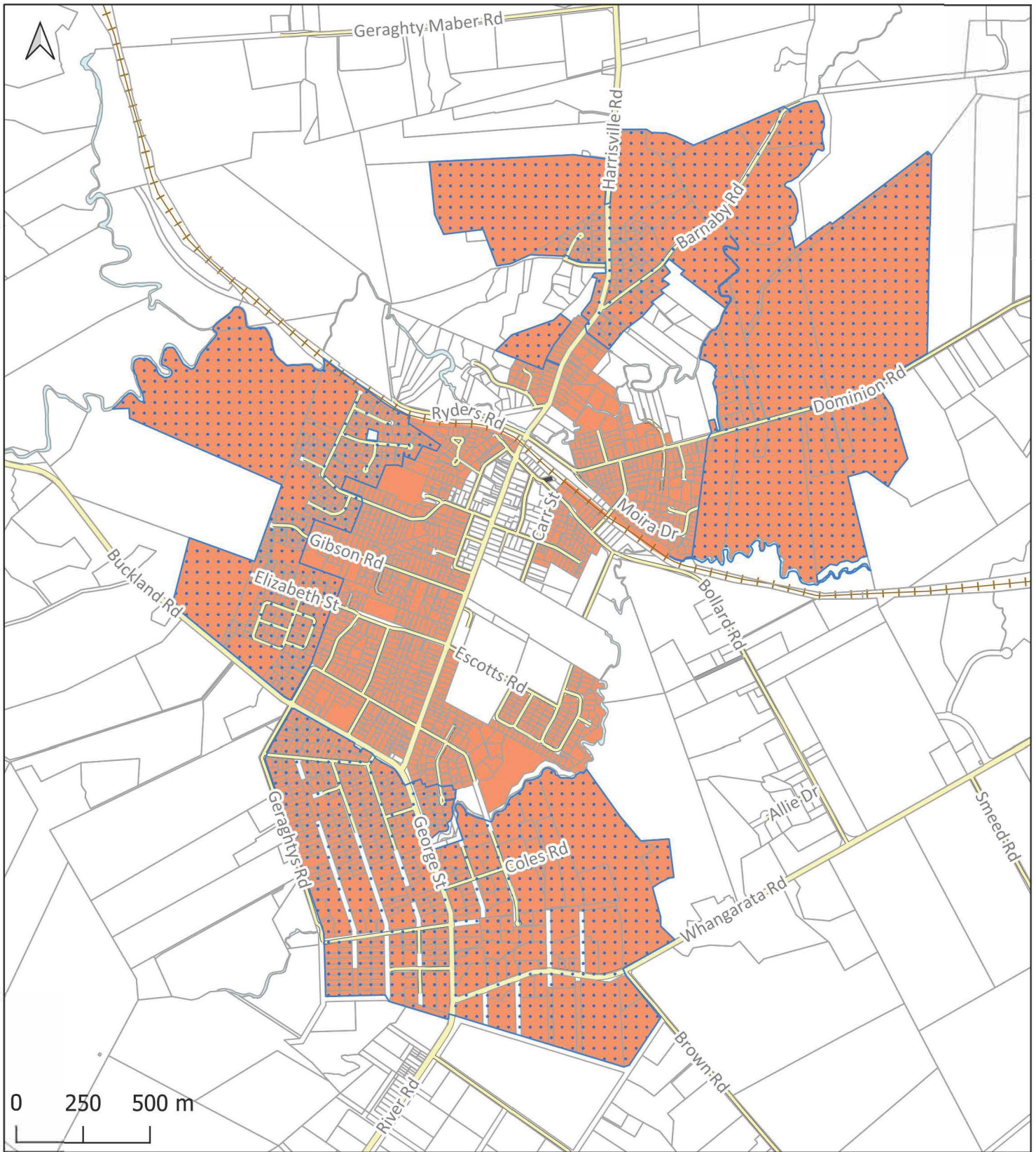
 Road

 Parcel boundaries

 Rail

 Waterbodies

**Note: style/colour of layer not final, subject to change on final district plan maps*



Legend

 Outer intensification area

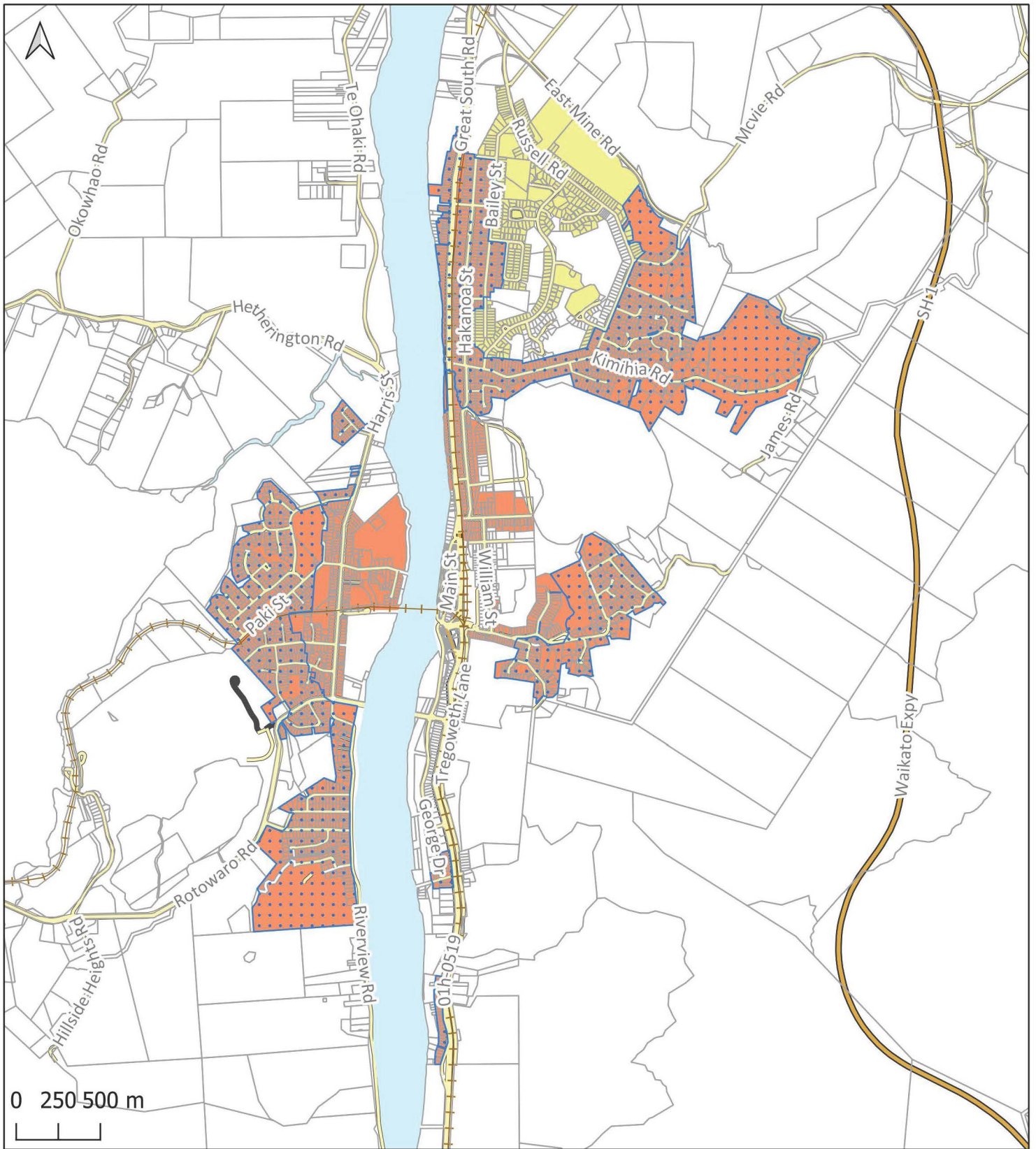
Zone

 MRZ2 - Medium density residential zone 2

 Parcel boundaries

 Rail

 Waterbodies



Legend

 Outer intensification area

Zone

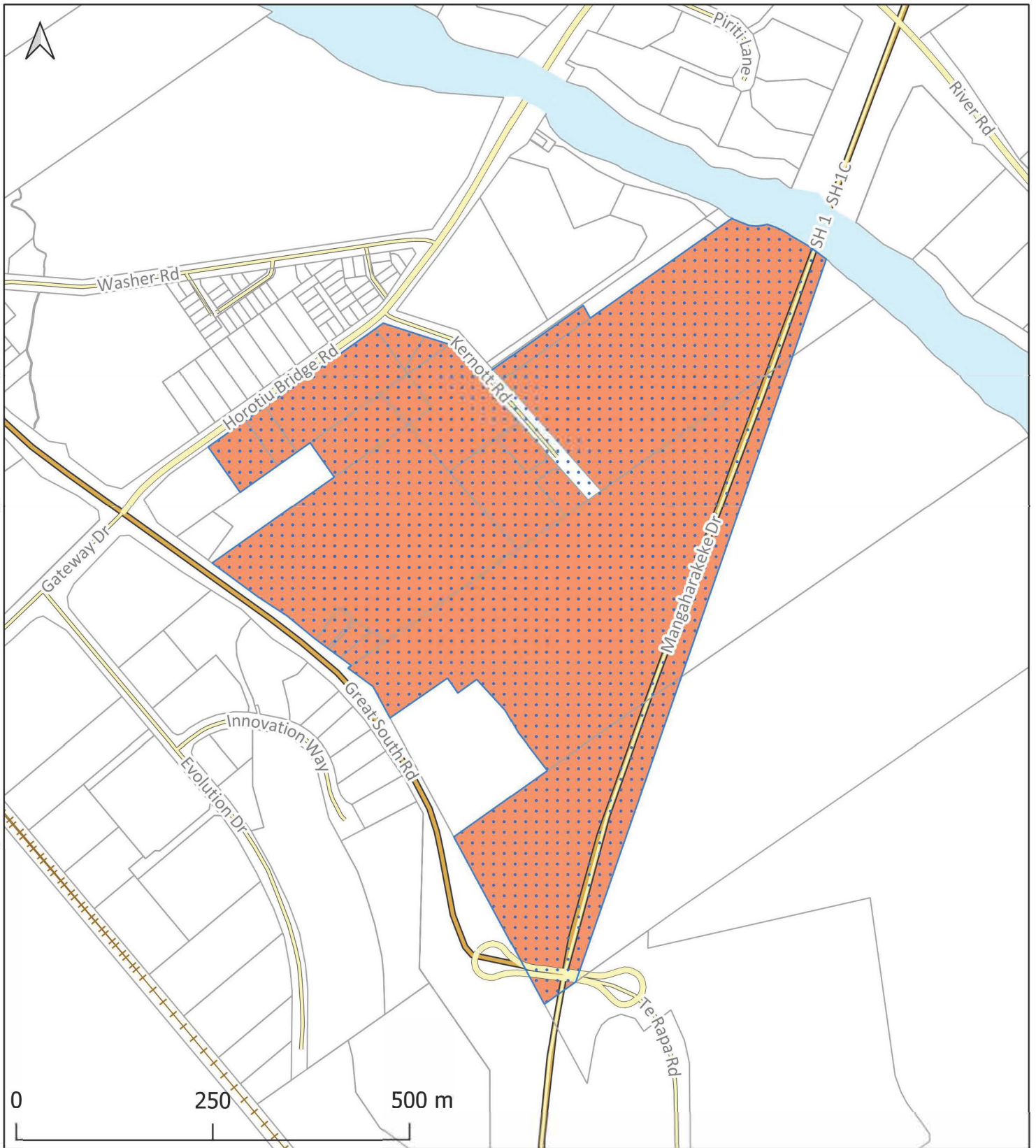
 GRZ - General residential zone

 MRZ2 - Medium density residential zone 2

 Parcel boundaries

 Rail

 Waterbodies



Legend

 Outer intensification area

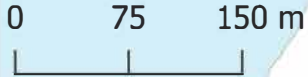
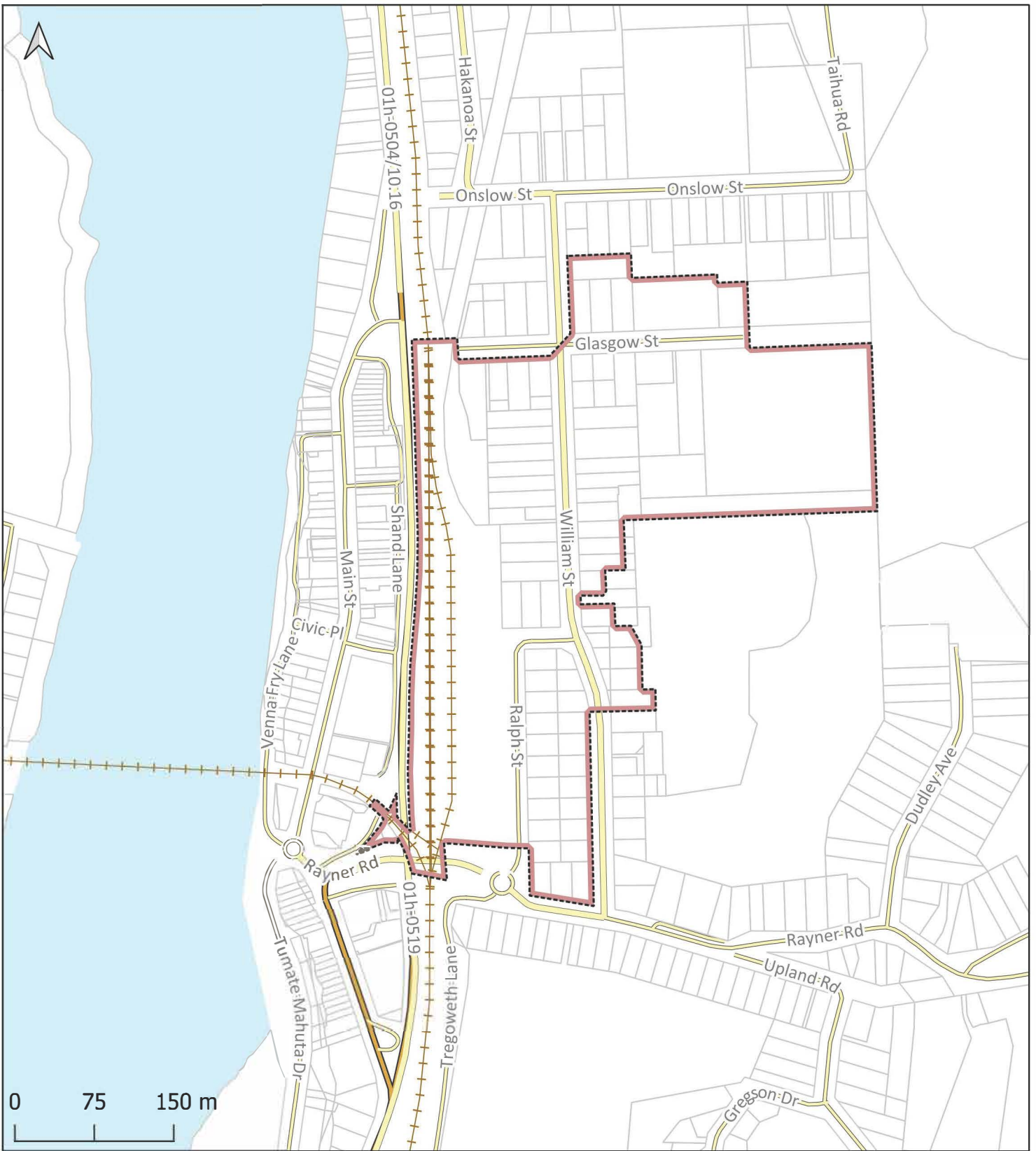
Zone

 MRZ2 - Medium density residential zone 2

 Parcel boundaries

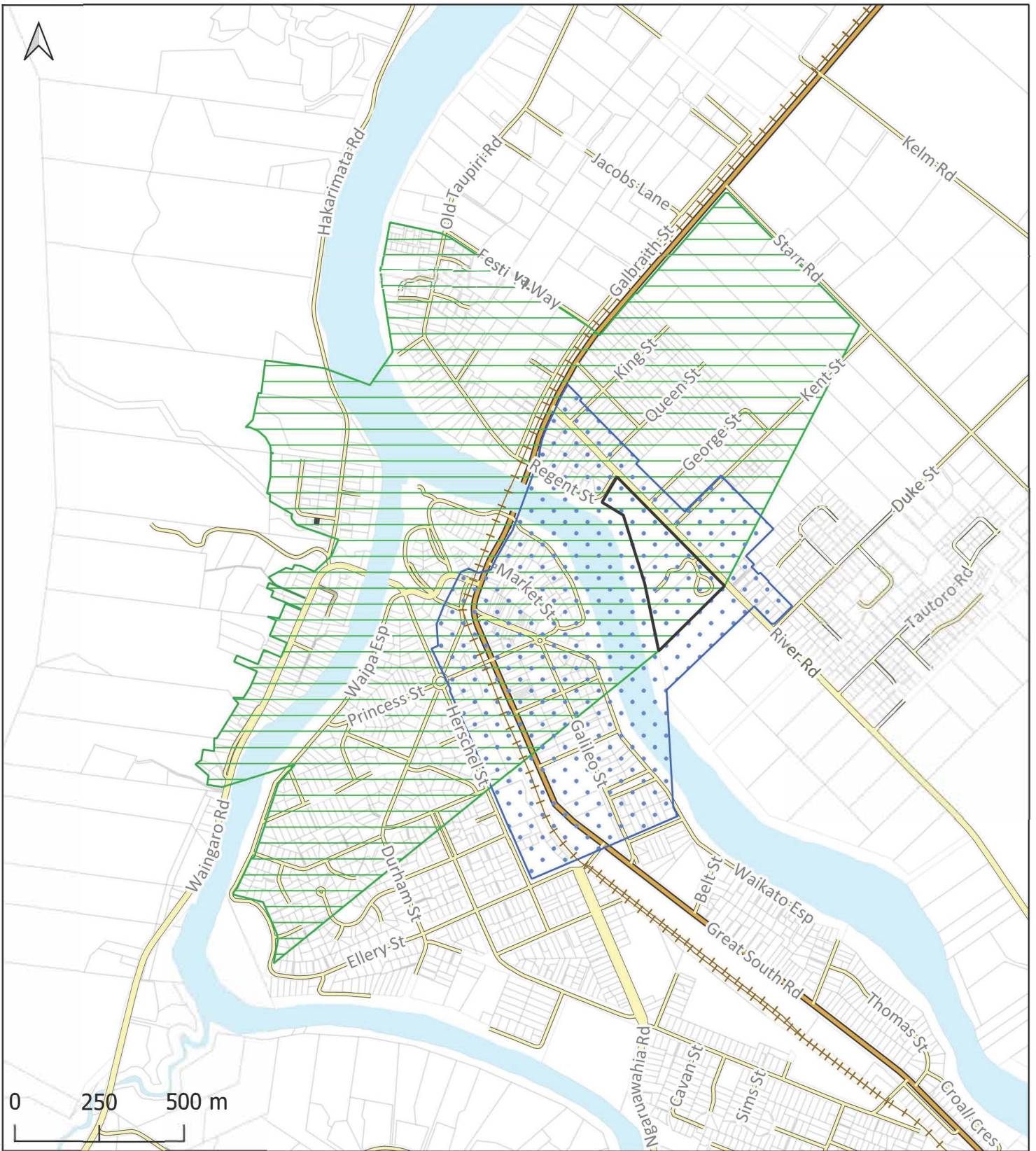
 Rail

 Waterbodies









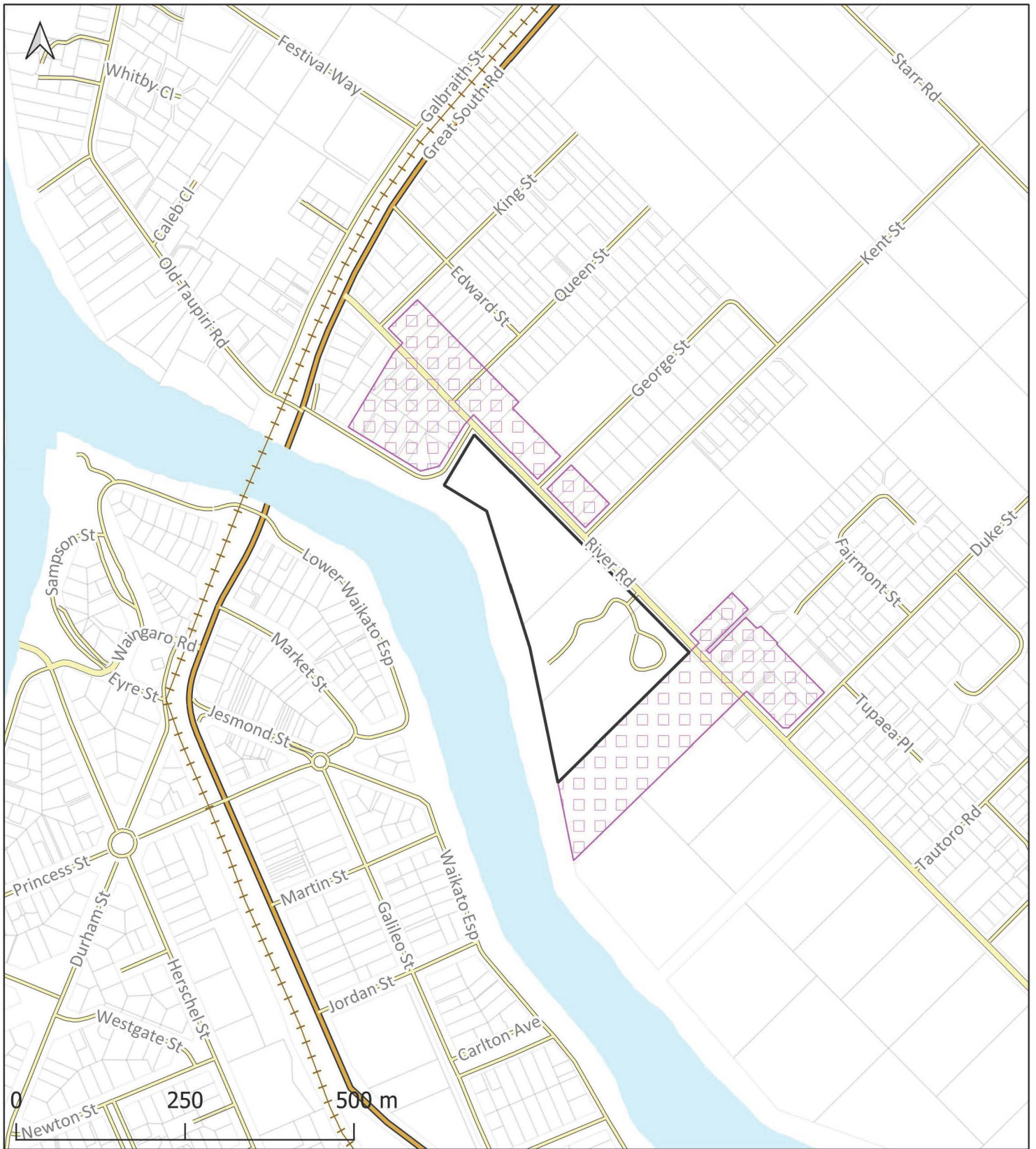
Legend

- Precinct
 - Commercial
 - Parcel boundaries
- Rail
- Waterbodies





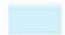


Legend

- | | |
|---|---|
|  Tuurangawaewae Marae outlook high potential effects area |  Parcel boundaries |
|  Tuurangawaewae Marae building height assessment overlay |  Rail |
|  Tuurangawaewae Marae location |  Waterbodies |



Legend

-  Tuurangawaewae Marae surrounds
-  Tuurangawaewae Marae location
-  Parcel boundaries
-  Rail
-  Waterbodies



Legend

- Geotechnical limitation QM
- Waterbodies
- Parcel boundaries