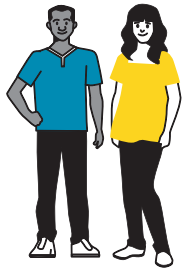


# Newcastle-Ngaaruawaahia General Ward

Some key towns in the ward include Ngaaruawaahia, Taupiri, Horotiu, Te Kowhai, Whatawhata, Horsham Downs.

## Demographic Summary from Census 2023



Population (2023)

**18,564**

Population Growth  
(2013-2023)

**Highest  
increase**



Post-School  
Qualifications (%)  
**52% (Post-school)**  
**48% (No)**

Median Age (2023)

**35.8**

Maaori  
Population (%)  
**35%**



Average Income (2023)

**\$48,200**

Home Ownership (%)

**47%**

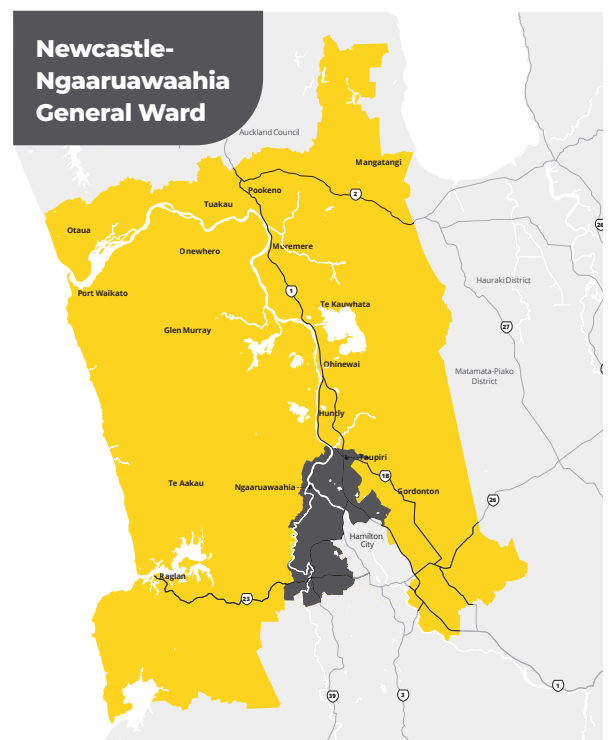


Here is a snapshot of Waikato District Council's plans for the Newcastle-Ngaaruawaahia General Ward area in the draft 2025-2034 Long Term Plan (LTP).

## Proposed rating impacts for the area

Taupiri (Residential)	2024/25	2025/26
Rating Valuation	700,000	700,000
Capital Value Rates	1,479.94	1,542.80
UAGC	526.15	548.5
Fixed Targeted Rates	3,109.55	3,536.76
<b>Total Rates</b>	<b>5,115.64</b>	<b>5,628.05</b>
<b>Total % Increase</b>		<b>10.02%</b>
<b>Total \$ Increase</b>		<b>512.41</b>
<b>Increase per week</b>		<b>\$9.85</b>

You can use our rates calculator at [waikatodistrict.govt.nz/rid](https://waikatodistrict.govt.nz/rid) to see how the proposed rates might affect your property.



## Key proposed projects and points of interest for your area over the next nine years



### Capital Projects

Project	Location	Description	Timeline	Cost
<b>Upgrades to The Point and Kiingitanga Reserves</b>	Ngaaruawaahia	Improvements to The Point (freedom camping facilities, parking, landscaping) and Kiingitanga Reserve (park furniture, signage, planting)	Year 1	\$489,558
<b>Horotiu Wastewater Pump Station Extension</b>	Horotiu	Expanding the wastewater pump station	Year 1-3	\$3,591,000 (Y1), \$1,913,285 (Y2), \$603,907 (Y3)
<b>Ngaaruawaahia Wastewater Treatment Plant Upgrade</b>	Ngaaruawaahia	Improvements to the treatment plant	Year 1	\$24,700,000
<b>New Ngaaruawaahia Library Facility</b>	Ngaaruawaahia	Feasibility study (Y1), building construction (Y2-3)	Year 1-3	\$540,014 (Y1), \$3,340,440 (Y2), \$3,437,498 (Y3)
<b>Taupiri Netball Pavilion Upgrades</b>	Taupiri	Building maintenance work	Year 2-3	\$5,051 (Y2), \$15,481 (Y3)
<b>Ngaaruawaahia Pump Station and Rising Main Upgrade</b>	Ngaaruawaahia	Infrastructure improvements	Year 1-2	\$5,950,800 (Y1), \$4,251,744 (Y2)

*In the Council's preferred option, the CCO will take over all water and wastewater services starting from year 2.*

### Consultation and Community Matters



Topic	Details
<b>Pensioner Housing Review</b>	Waikato District Council owns 34 pensioner housing units in Ngaaruawaahia, Huntly, and Tuakau. The possibility of selling them is being explored.
<b>Whatawhata Hall Rate Decrease</b>	The proposed expansion of the Whatawhata Hall area will result in a \$6.49 decrease in the targeted rate. This will bring the total rate to \$50.51 per year.

### Impact on affordability

- This draft LTP proposes a general rate increase of 4.25% from 1 July 2025, with expected increases between 1.5% and 4.5% in subsequent years.
- Proposed investments over the next nine years include \$787.1 million in roading, \$651.1 million in drinking water, \$747.9 million in wastewater management, \$145.3 million in stormwater, and \$1,782.95 million in other core services.
- The focus of this LTP is on the 'must haves' and effective delivery of what we said we were going to do.

While there are many aspirations and needs across the district, some are not affordable right now as we focus on maintaining services and projects within current budget constraints.

- Council costs have increased by 20 per cent since the previous LTP, with construction costs rising by 27 per cent. This requires careful planning and prioritisation for the draft 2025-2034 LTP and is reflected in our consultation document.

## Have your say on what matters most

Ensuring local voices are heard is vital. Submissions on the draft LTP will be taken to council chambers for discussion and decision-making.

Share your views at [waikatodistrict.govt.nz/say-it](https://waikatodistrict.govt.nz/say-it)



**Consultation on the draft 2025-2034 LTP runs from 11 April to 11 May 2025.**