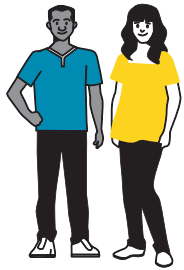


# Western Districts General Ward

Some key communities in the ward include Port Waikato, Ruawaro, Te Aakau, Onewhero, Pukekawa, Naike, Glen Murray.

## Demographic Summary from Census 2023



Population (2023)  
**6,060**

Population Growth  
(2013-2023)  
**Slow  
increase**



Post-School  
Qualifications (%)  
**47% (Post-school)**  
**53% (No)**

Median Age (2023)  
**42.3**

Maaori  
Population (%)  
**26%**



Average Income (2023)  
**\$40,200**

Home Ownership (%)

**52%**

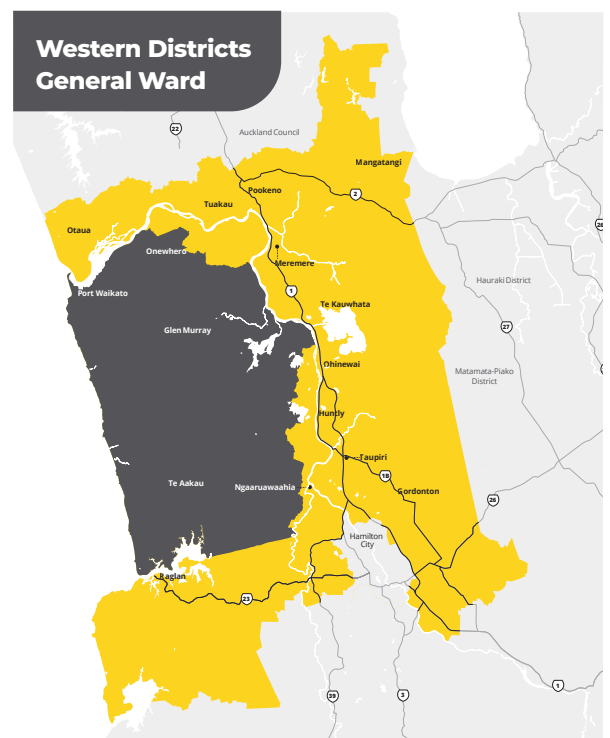


Here is a snapshot of Waikato District Council's plans for the Western Districts General Ward area in the draft 2025-2034 Long Term Plan (LTP).

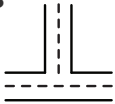
## Proposed rating impacts for the area

Naike (Residential)	2024/25	2025/26
Rating Valuation	870,000	870,000
Capital Value Rates	1,839.35	1,917.47
UAGC	526.15	548.5
Fixed Targeted Rates	136.84	184.99
<b>Total Rates</b>	<b>2,502.34</b>	<b>2,650.96</b>
<b>Total % Increase</b>		<b>5.94%</b>
<b>Total \$ Increase</b>		<b>148.62</b>
<b>Increase per week</b>		<b>\$2.86</b>

You can use our rates calculator at [waikatodistrict.govt.nz/rid](https://waikatodistrict.govt.nz/rid) to see how the proposed rates might affect your property.



# Key proposed projects and points of interest for your area over the next nine years



## Strengthening the Resilience of Our Roding Network

Council is committed to improving the long-term reliability and safety of our road network. As part of our 2024–2027 Resilience Programme, a number of key sites have been identified for proactive repairs to address ongoing slip issues and enhance our network's ability to withstand severe weather events and the impacts of climate change:

- Wairamarama–Onewhero Road
- Waikaretu Valley Road
- Onewhero–Tuakau Bridge Road
- Highway 22

- Otaua Road (Bridge embankment)
- Various Waikato District retaining wall sites (7 locations)

By undertaking this work, we aim to reduce the need for emergency repairs, maintain critical access routes during extreme weather, and extend the functional life of key transport corridors. Community feedback on these initiatives is encouraged as we finalise the Long-Term Plan. Your input helps us prioritise the work that matters most.



## Consultation and Community Matters

Topic	Details
Opuatia Hall Rate Increase	A proposed targeted rate increase of \$3, bringing the total rate to \$35 per year.
Naike Hall Rate Transfer	Proposal to transfer the Naike Hall targeted rate to the Naike Community Centre to fund ongoing maintenance. Also an increase in targeted rate.
Ruawaro Hall Deconstruction	Proposal to remove Ruawaro Hall and replace it with a new memorial.
Te Akau Recycling Drop-Off Service	Consultation on adding a new drop-off recycling service for Te Akau residents.
Glen Murray Hall Rate Increase	A proposed targeted rate increase of \$20, bringing the total rate to \$70 per year.

## Impact on affordability

- This draft LTP proposes a general rate increase of 4.25% from 1 July 2025, with expected increases between 1.5% and 4.5% in subsequent years.
- Proposed investments over the next nine years include \$787.1 million in roading, \$651.1 million in drinking water, \$747.9 million in wastewater management, \$145.3 million in stormwater, and \$1,782.95 million in other core services.
- The focus of this LTP is on the 'must haves' and effective delivery of what we said we were going to do.

While there are many aspirations and needs across the district, some are not affordable right now as we focus on maintaining services and projects within current budget constraints.

- Council costs have increased by 20 per cent since the previous LTP, with construction costs rising by 27 per cent. This requires careful planning and prioritisation for the draft 2025-2034 LTP and is reflected in our consultation document.

# Have your say on what matters most

Ensuring local voices are heard is vital. Submissions on the draft LTP will be taken to council chambers for discussion and decision-making.

Share your views at [waikatodistrict.govt.nz/say-it](https://waikatodistrict.govt.nz/say-it)



Consultation on the draft 2025-2034 LTP runs from 11 April to 11 May 2025.