

## Assessment of Effects

### Strengths

*Tuakau and the surrounding district have an interesting and diverse history, which connects with national stories, such as those of the 1860s Waikato War and the development of the railways. The history of the area also reflects the contributions made by individuals and families who helped to develop the district through their farming, light industrial, civic, religious and social activities.*

*The Tuakau and Districts Museum is a community asset that can provide a focus for ongoing heritage research, identification and promotion activities.*

*The Waikato District Heritage Strategy identifies the value of historic heritage resources to the community and provides a framework for a coherent and comprehensive approach to the identification, protection and management of these resources.*

### Weaknesses

*There is currently very limited protection for built heritage resources provided for in the Waikato District Plan (Franklin Section).*

*Rules pertaining to scheduled heritage items are not immediately accessible within either of the District Plans that Waikato Council presently has responsibility for.*

### Opportunities

*In addition to acknowledging the history of the town and its hinterland, the Structure Plan provides the opportunity, by means of the public notification, hearing and implementation process, to raise the profile of Tuakau's heritage values.*

*Urban design strategies developed for the Structure Plan area can take account of Tuakau's historical genesis and consider planning, design and planting actions that acknowledge the history of the area.*

### Threats

*Loss of built heritage items may result from intensification should a future planning framework fail to provide for the protection of listed items and their surroundings.*

*Extensive residential development could erode the separate identities of Tuakau and Harrisville, whose boundaries are already confused somewhat by the 'Welcome to Tuakau' sign that greets motorists as they approach the Harrisville School from the north.*

## Recommended Heritage Planning Actions

Key recommendations to be considered as part of the Tuakau Structure Plan and incorporated in to the subsequent District Plan Change are as follows:

- 1. Additional heritage items should be added, by way of variation, to the District Plan (Franklin Section) in order to manage their conservation and continued use.*
- 2. Historical information pertaining to the Structure Plan should be lodged in the Tuakau & District Museum and/or the Tuakau Library. The establishment of a Kete Waikato portal by the Waikato District Libraries would facilitate the sharing of heritage information with and amongst members of the community.*
- 3. Implementation of the Structure Plan and consequent Plan Change should be monitored to ensure that it maintains and enhances the heritage values of the area.*
- 4. Local Reserve Management Plans should identify and promote the active management of historic heritage resources where relevant. Some Tuakau & Districts reserves may be classified as historic reserves because of their significant heritage value, others may have scheduled historic heritage items located within them, still others may have historic heritage features or structures that are yet to be explicitly identified and managed, regardless of the classification of the reserve under the Reserves Act.*
- 5. In other parts of the district council's rohe some groupings of houses are currently scheduled on the District Plan, for example the Matangi dairy factory houses. There may be community interest in identifying similar groups or clusters of buildings within Tuakau and district that can be shown to have heritage value and/or make a contribution to character streetscapes. Some pre-1930 houses in River Road, George Street and Harrisville Road, for example, contribute to the historic character of the district in terms of their age, style, setting, and location.*
- 6. A stand-alone Historic Heritage Chapter in a unitary District Plan when one is developed in the future, would assist the owners of built heritage sites and structures to better understand the priority afforded to this resource management issue by council.*

## Conclusion

The Tuakau Structure Plan provides Waikato District Council with the opportunity to consider how the history and heritage resources of the district might be used to maintain and enhance a sense of place and identity in Tuakau, Harrisville and Whangarata.



Figure 25: Sir Edmund Hillary Memorial Cairn, George Street, Tuakau. A McEwan, 24 March 2014.



Figure 26: 'Tuakau Hill'; looking north up Harrisville Road from the railway line running parallel to Liverpool Street. There is flax drying in the mid-ground and the Masonic Hall can be seen beyond the flax. Photograph taken by William Price in the early 1900s. ½-001526, Price Collection, Alexander Turnbull Library.

## Appendix 1: Tuakau Historic Timeline

- Pre-1846    Maori settlement of Tuakau on the northern shore of the Waikato River
- 1857        Maori court at Tuakau devises a Code of Law (see Morris, *Early Days*, pp. 103-5)
- 1863-4     Waikato War
- 1865        First Waikato Immigration Scheme settlers arrive – town surveyed
- 1870        Tuakau Post Office
- 1875        Railway reaches Tuakau  
              Tuakau Hotel opens [license transferred to new hotel in 1880]



Figure 27: Tuakau Hotel, early 1900s. Price Collection, ½-001522-G, Alexander Turnbull Library.

- 1877        Harrisville School established



Figure 28: 'Harrisville School, near Tuakau, Franklin District', 22 April 1954. View shows the original schoolhouse (1877) right on the bend of Harrisville Road. It was evidently demolished in 1964. WA-35447-F, Whites Aviation Collection, Alexander Turnbull Library.

1886      First punt across the river at Tuakau landing



Figure 29: Group portrait of the committee of management, driving first pile ceremony, Tuakau Bridge, Waikato, June 18, 1901. Standing: Messrs Whiteside and Brown. Seated: Messrs Priest, Glasson and Madill. *Auckland Weekly News* 28 June 1901. AWNS-19010628-16-3, Sir George Grey Special Collections, Auckland Libraries.

1901      Tuakau Bridge (opened 26 May)  
            Tuakau Saleyards erected  
            Whitebait canning factory opened by EC Frost

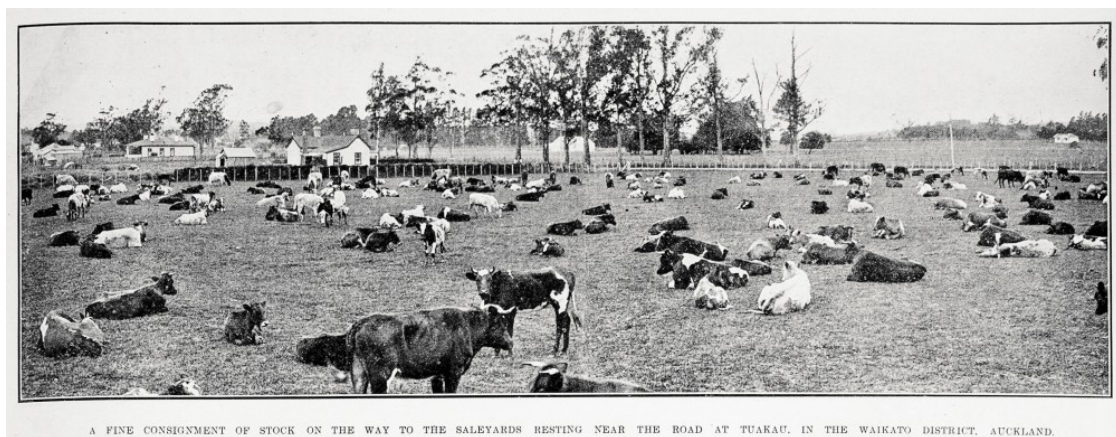


Figure 30: 'A fine consignment of stock on the way to the saleyards resting near the road at Tuakau, in the Waikato district, Auckland' *Auckland Weekly News* 16 November 1922. AWNS-192221116-49-1, Sir George Grey Special Collections, Auckland Libraries.

1906      Bonemilling operation of Madill & Smeed Ltd established to manufacture  
            fertilizer (closed 1973)

1910      New Railway Station built

1911      National Bank agency established

1914      New Tuakau Post Office opened

1914	BNZ agency established
1915	Waikato River Board established
1917	Waikato Co-op Dairy Company factory erected on Ryder's Road (closed 1984)
1920	New school site chosen for Tuakau Primary School
1924	Tuakau Town Hall erected
1924-31	Edmund Hillary attended Tuakau Primary School
1932	Taupiri Dairy Company factory built near the river (now closed)
1933	Second Tuakau Bridge (opened 22 June)
1940	Centennial Park (opened 20 May)
1946	Full branch status achieved by the National Bank, BNZ followed suit in 1952
1966	Farmers' Trading Co. store closed
1987	Tuakau & Districts Museum opened in former Post Office (17 October)
2001	George Street upgrade project undertaken



## Appendix 2: Selected Bibliography

- Allen, JM *From Ireland to the Antipodes: The Young and Ingram Family of Tuakau, New Zealand and the McConnell Family of Newcastle, New South Wales and New Zealand* (Auckland, 2006)
- Brewer, Kenneth *The History of the Tuakau Police, 1907 to 2005* (Auckland, 2005)
- Brown, Tom *The Browns of Tuakau: A Record of the Origins and Progress in New Zealand, 1873-1973, of the Family of Arthur and Margaret Brown* (Papatoetoe, c. 1974)
- Chandler, Bob [ed.] *Tuakau Rugby Football Club Centennial, 1887-1987* (Tuakau, 1987)
- Cowan, James *The Maori: Yesterday and To-day* (Christchurch, 1930)
- Gallagher, Pat *The Marist Brothers in New Zealand, Fiji & Samoa, 1876-1976* (Tuakau, 1976)
- Harrisville School 125<sup>th</sup> Anniversary Committee *125 Years: Harrisville School 1877-2002* (Harrisville, 2002)
- Headford, Christine *The Lapwoods of Tuakau: The Family of Alfred Octavius Lapwood (1844-1923)* (Auckland, 1998)
- Heritage Consultancy Services '48 & 52 Dominion Road, Tuakau - Historic Heritage Assessment' for Franklin District Council (Hamilton, 2008)
- Howe, George, 'Johnny Cowell – Pakeha-Maori Trader,' *Auckland-Waikato Historical Journal* 30 (April 1977, pp. 13-18)
- Kerse, Lorna *Collins Family Reunion, 21-23rd January 1994* (Wellington, 1994)
- Mead, AD *Richard Taylor: Missionary Trumper* (Wellington, 1966)
- Morris, Nona [ed.] *The Journal of William Morgan: Pioneer Settler and Maori War Correspondent* (Auckland, 1963)
- Morris, Nona *Early Days in Franklin: A Centennial Volume* (Auckland, 1965)
- Morris, Keith & Nona *Franklin Remembers: The War Years 1939-1945* (Waiuku, 1992)
- Mosen, Jeffrey *Cultural Heritage Inventory: A Base Inventory for the Franklin District* (Auckland, 1993)
- 'Ngati Tamaoho Cultural Values Assessment Report for Tuakau Business Plan Change', prepared by Dennis Ngataki for Franklin District Council (October 2008)
- Pates, Janet 'The Alexandra Redoubt,' *New Zealand Memories* 57 (December/January 2006, pp. 64-5)

Prickett, Nigel *Landscapes of Conflict: A Field Guide to the New Zealand Wars* (Auckland, 2002)

*Spotlight on Life and Business: Franklin District 2002* (Hamilton, 1999)

Taylor, Nancy M [ed.] *Early Travellers in New Zealand* (Oxford, 1959)

Tuakau & District Old Settlers Association *Tuakau & Districts: Golden Memories 1942-1992* (Tuakau, 1992)

Tuakau Borough Council *Tuakau District Centennial* (Tuakau, 1965)

*Tuakau College 25<sup>th</sup> Reunion, 1974-1999* (Tuakau, 1999)

Tuakau College Jubilee Committee *Tuakau College Jubilee, 1974-1984* (Tuakau, 1984)

'Tuakau Looks Ahead' [*Auckland Star* article] (Auckland, 1959)

*Tuakau Primary School, 1870-1970* (Tuakau, 1970)

Turbott, Thomas 'Tuakau as I Knew it, up to 1900: Part One,' *Auckland-Waikato Historical Journal* 55 (September, 1989, pp. 34-8)

Turbott, Thomas 'Tuakau as I Knew it, Up to 1900: Part Two,' *Auckland-Waikato Historical Journal*, 56 (April 1990, pp. 29-36)

Van Gessel, Elizabeth *One hundred Years and More, 1905-2005: St Andrew's Catholic Church, Tuakau* (Tuakau, 2005)

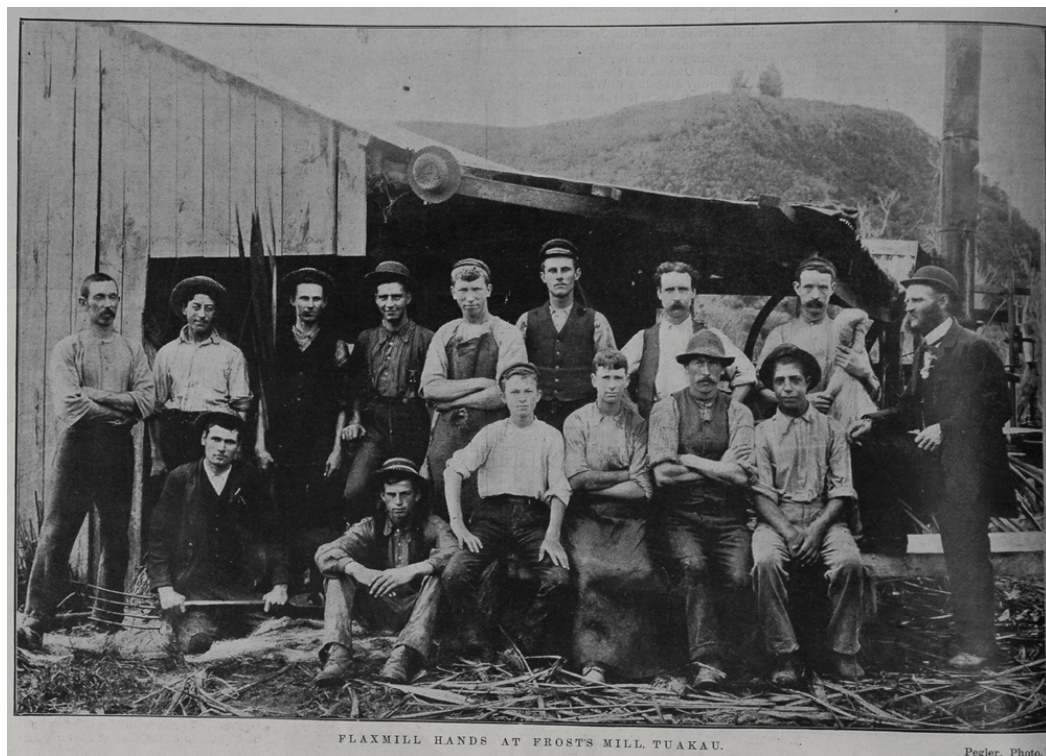


Figure 31: 'Group portrait of workers at the Frosts [flax]mill, Tuakau' *Auckland Weekly News* 9 June 1899. AWNS-18990609-6-1, Sir George Grey Special Collections, Auckland Libraries.



### Appendix 3: Image Gallery

Note: It is appreciated that the following images may not have been reproduced at sufficient scale to allow for individual features to be recognized. The intention here is to illustrate the range of visual material consulted during the preparation of this report and to provide a reference for further research. All maps and survey plans were sourced from QuickMap, unless otherwise stated.



Figure 32: 'Plan of the Township of Tuakau', SO 415. QuickMap. The plan includes property owners' names marked on some parcels of land and the 'Tuakau Redoubt' is clearly shown in outline on the bank of the Waikato River at lower edge. Undated [c. 1866-68].

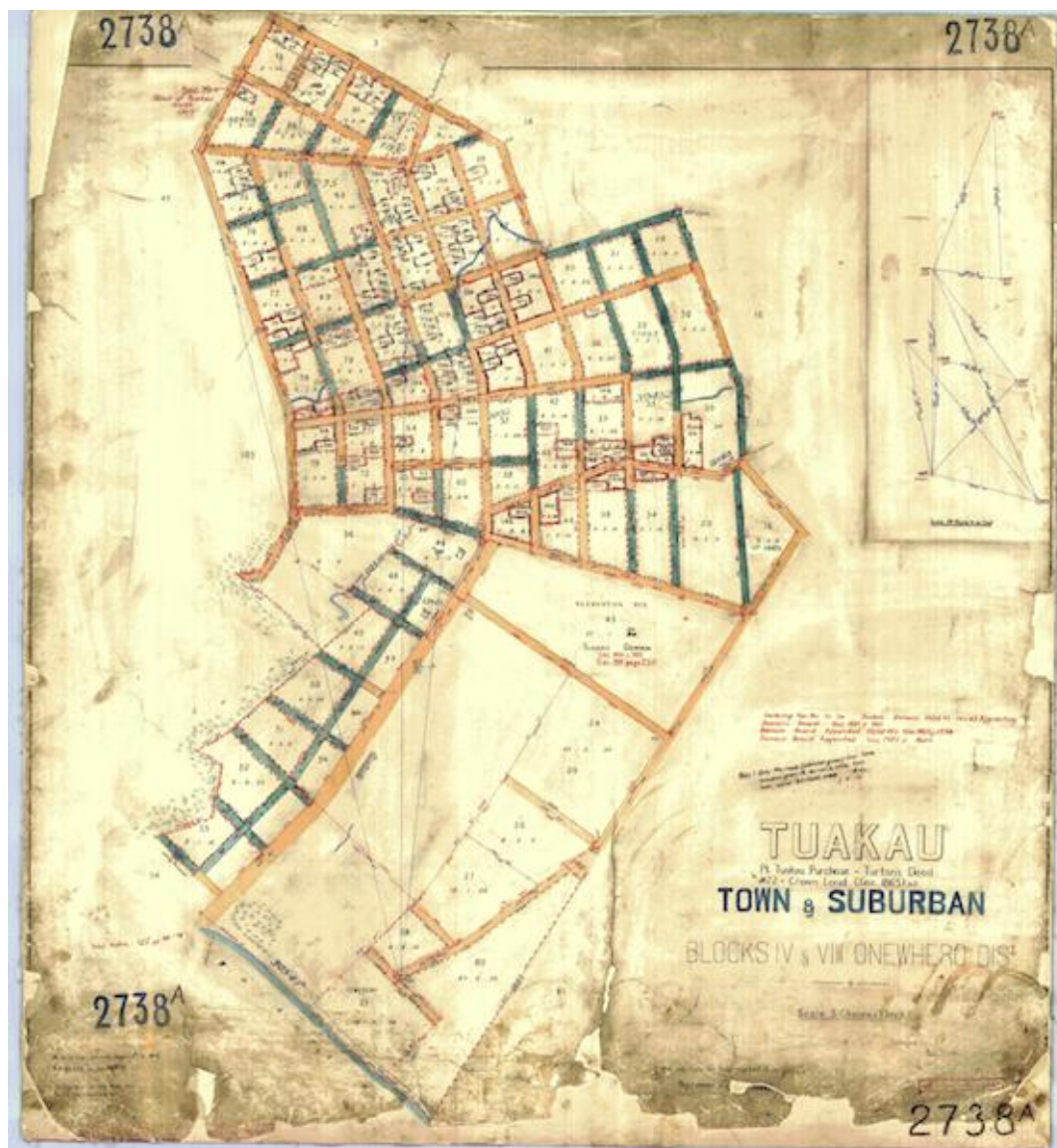


Figure 33: 'Tuakau – Town & Suburban', SO 2738. 1881. QuickMap.



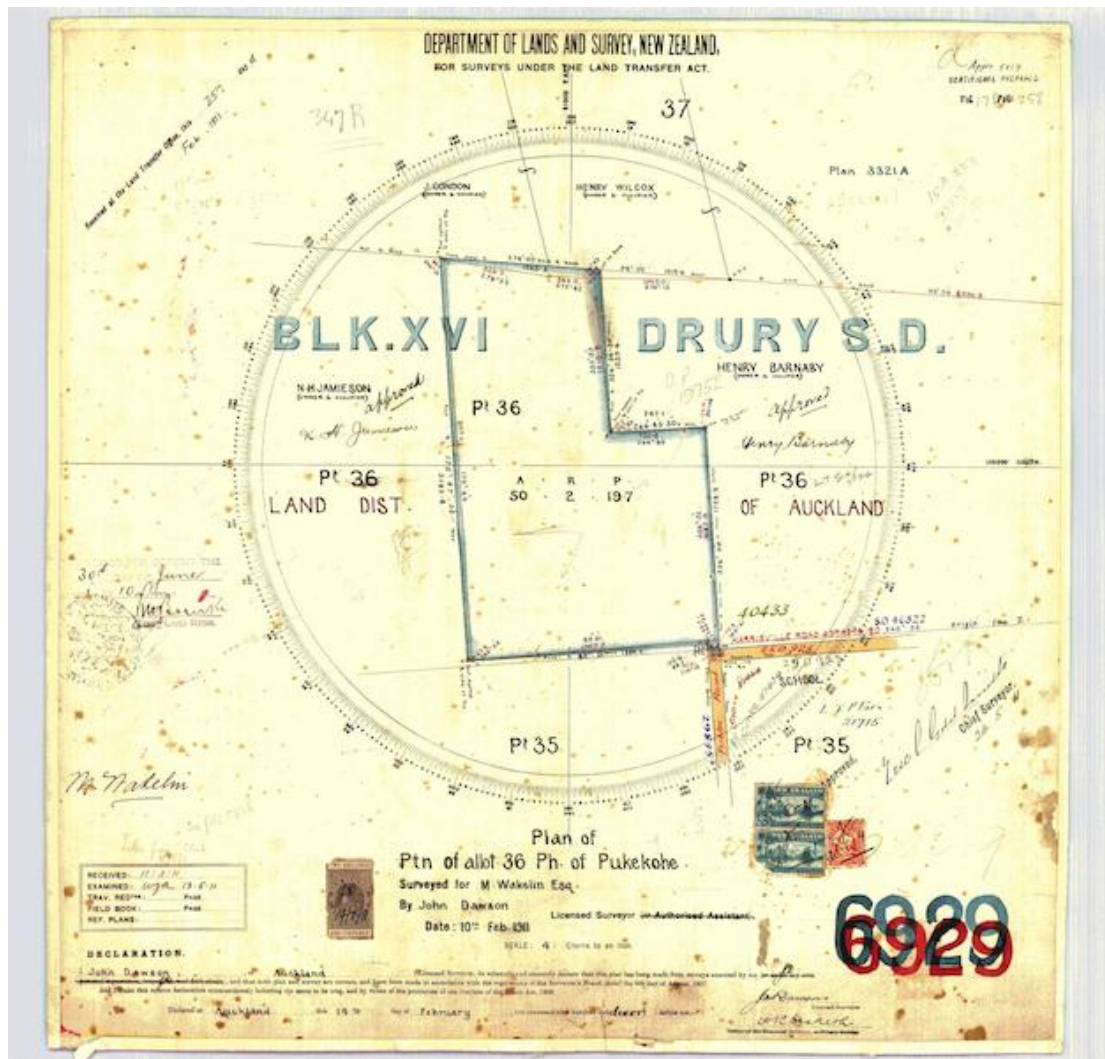


Figure 34: 'Plan of Ptn Allot 36 Parish of Pukekohe', DP 6929, 10 February 1911. Showing a subdivision northwest of the Harrisville School site.



Figure 35: 'Plan of Town of Tuakau Extension No. 1', DP 7325, 12 May 1911.





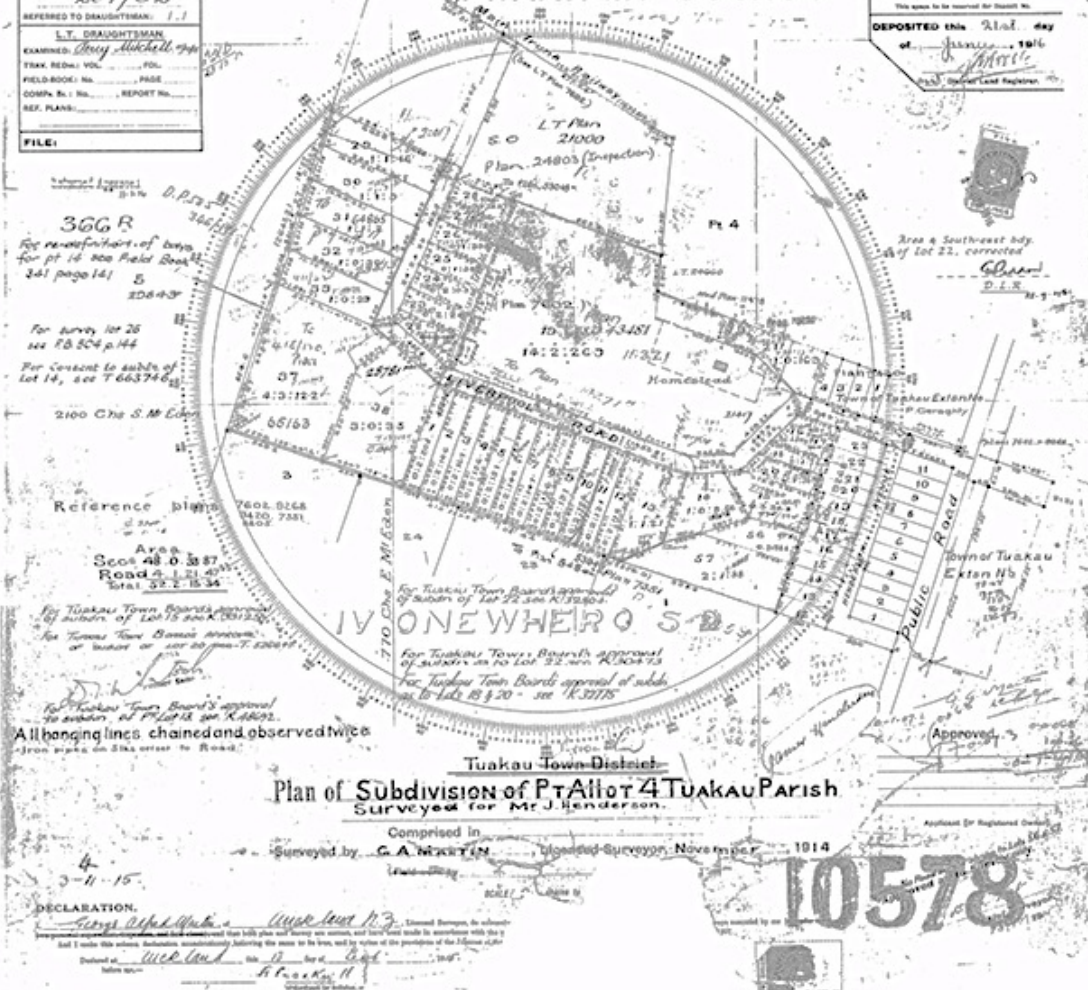


Figure 37: 'Plan of Subdivision of Pt Allot 4 Tuakau Parish', DP 10578, 1 November 1914.



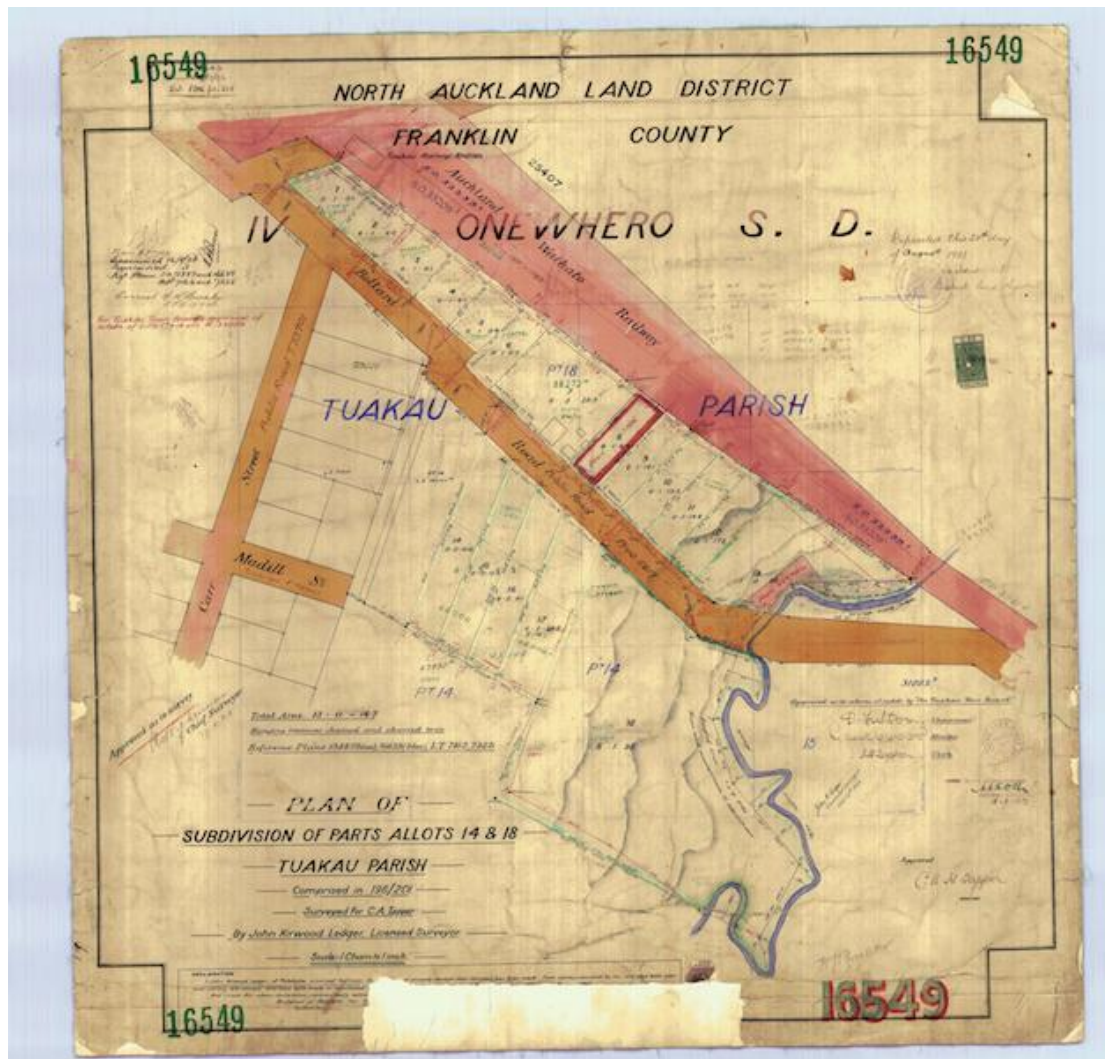


Figure 38: 'Plan of Subdivision of Parts Allots 14 & 18, Tuakau Parish', DP 16549, 20 August 1923.

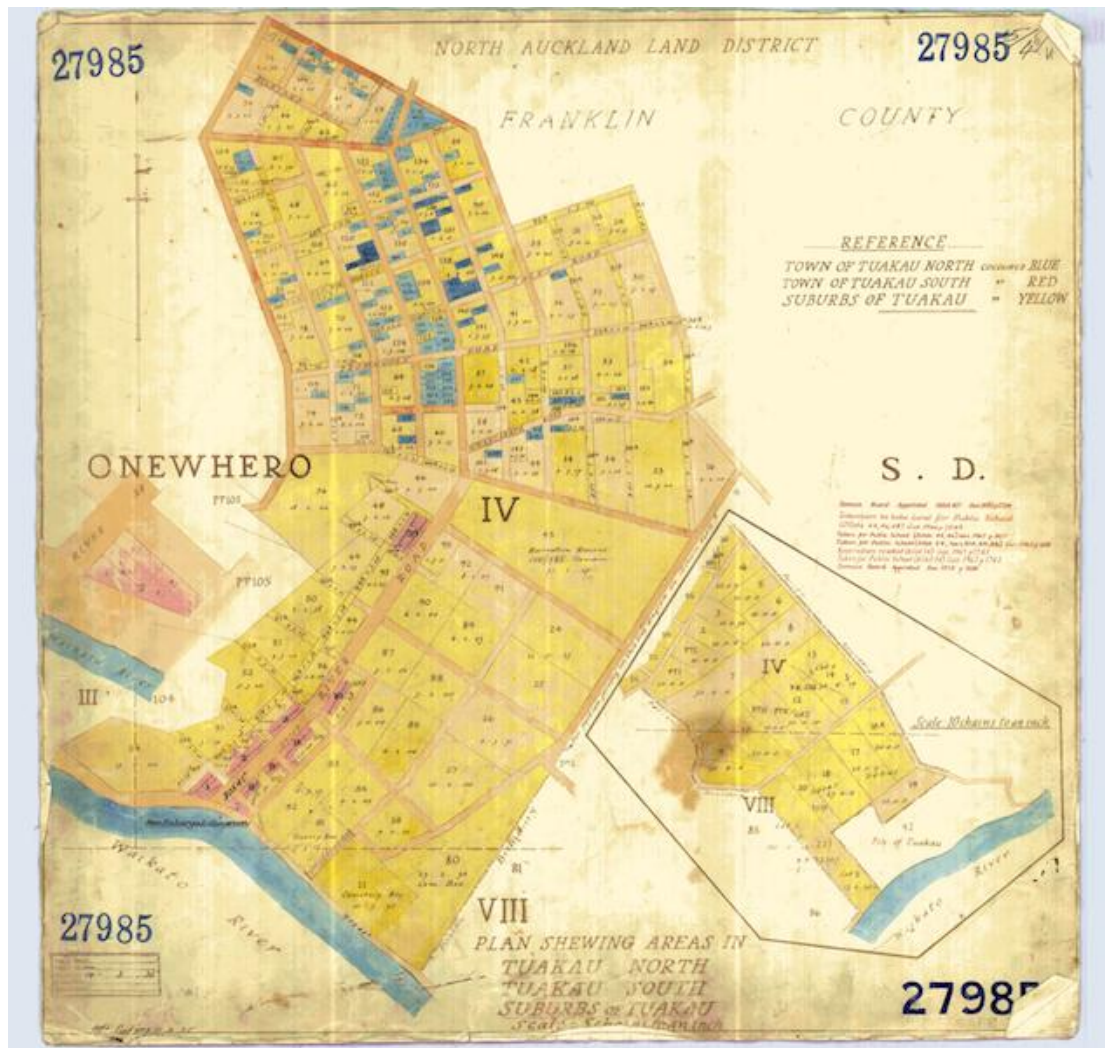


Figure 39: 'Plan Showing Areas in Tuakau North, Tuakau South, Suburbs of Tuakau', SO 27985, 14 March 1935.



Figure 40: Detail from December 1946 aerial of Tuakau, Franklin district, showing town centre looking south from Tuakau hill. WA-04546-F, Whites Aviation Collection, Alexander Turnbull Library.