

Waikato District Council

# **Pookeno engagement event**

# Agenda

- Welcome and scene setting
- Our district
- What Council does
- How Council is funded
- Challenges
- Explaining rates
- Responding to the challenges
- Questions and Answers

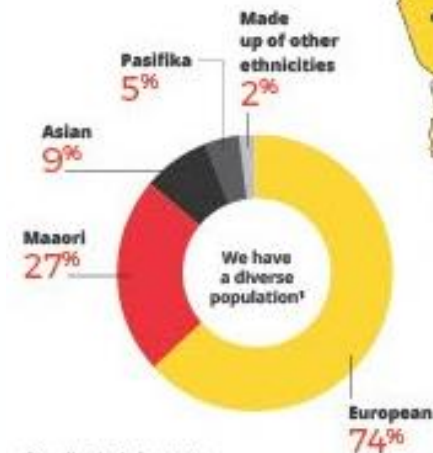
## **Presenters:**

Chief Executive Craig Hobbs

Chief Operating Officer Tony Whittaker



# Our district at a glance



Our district is home to **92,500<sup>1</sup>** people

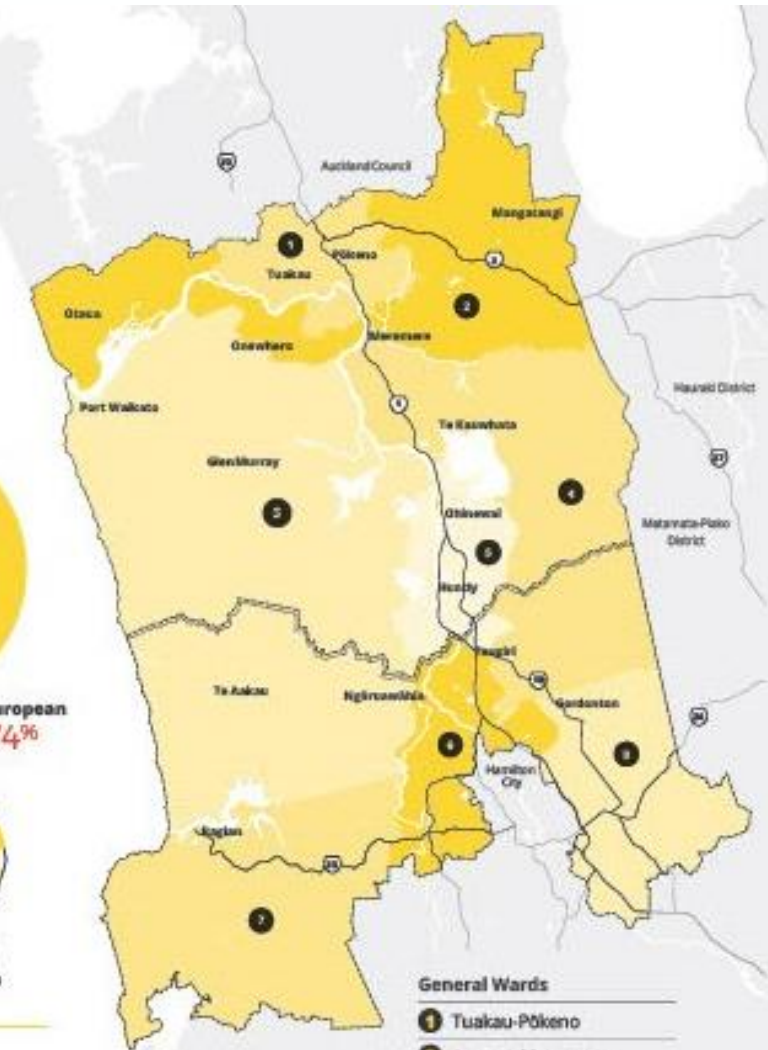
We welcomed **375 new citizens** to the district.



Our district covers more than **400,000 hectares**



<sup>1</sup>Source: 2023 Census



## General Wards

- 1 Tuakau-Pōkeno
- 2 Awaroa-Māmarua
- 3 Western Districts
- 4 Waerenga-Whitikahu
- 5 Huntly
- 6 Newcastle-Ngaruawahia
- 7 Whāingaroa
- 8 Tamahere-Woodlands

## Māori Wards

- Tai Raro Takiwā
- Tai Runga Takiwā

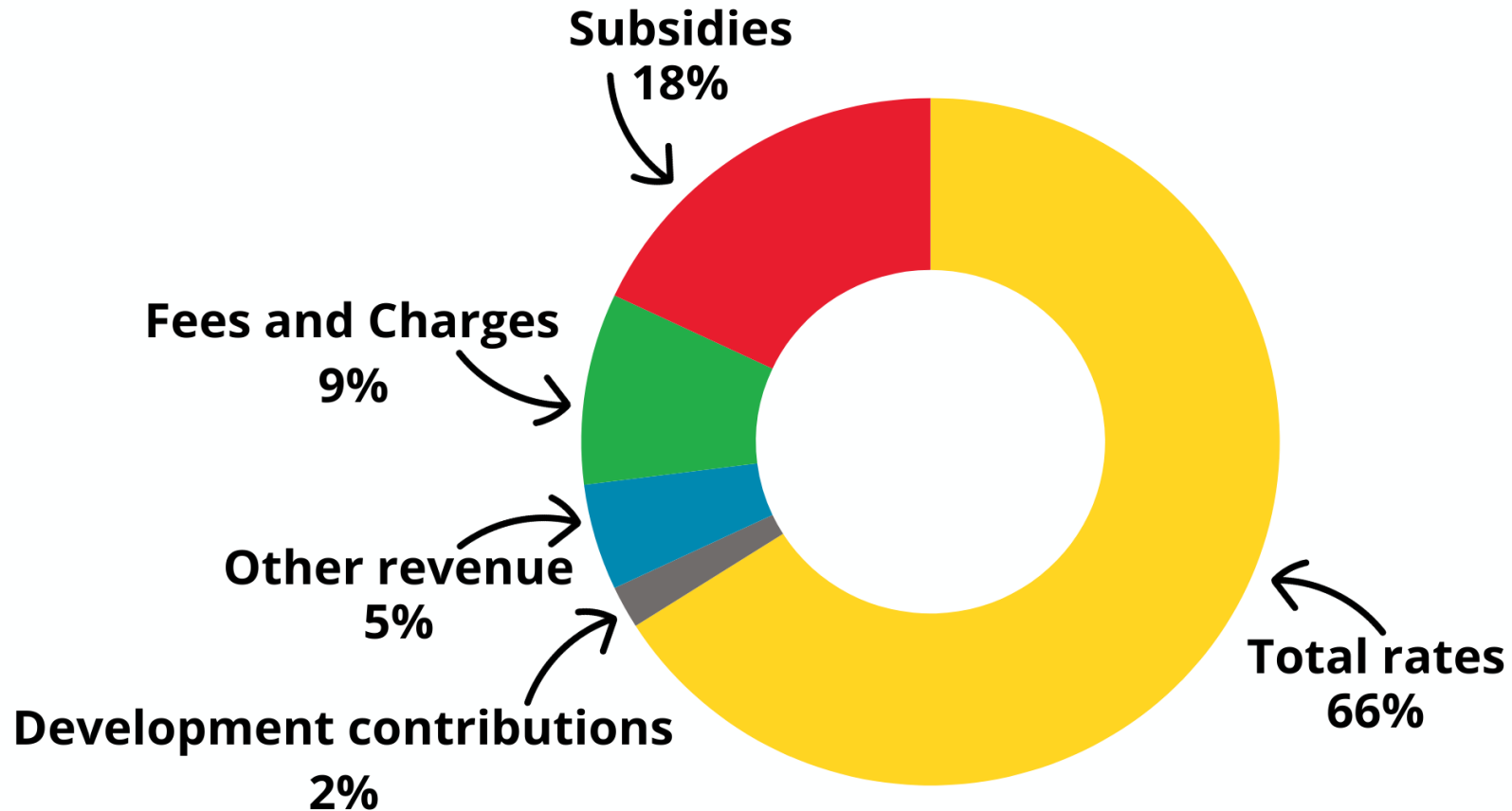
Figure 7: Overview of the Waikato District and Wards.

# What is council responsible for?



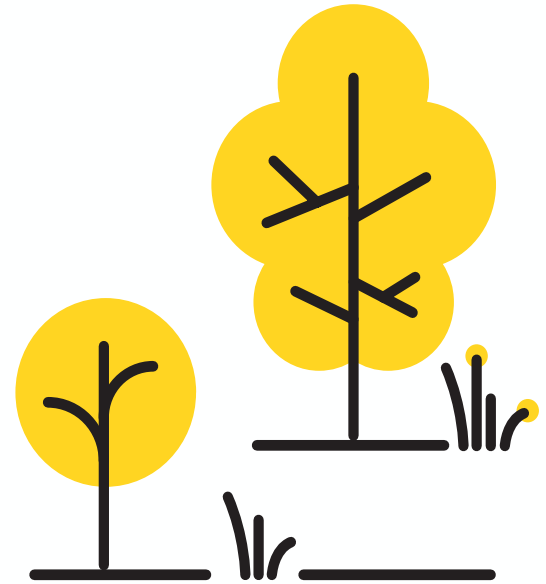
- Roading
- Water, Wastewater and Storm water
- Rubbish and recycling services
- Community facilities and reserves
- Consenting
- Planning
- Regulatory services
- Emergency management

# How Council is funded



# Our collective challenges

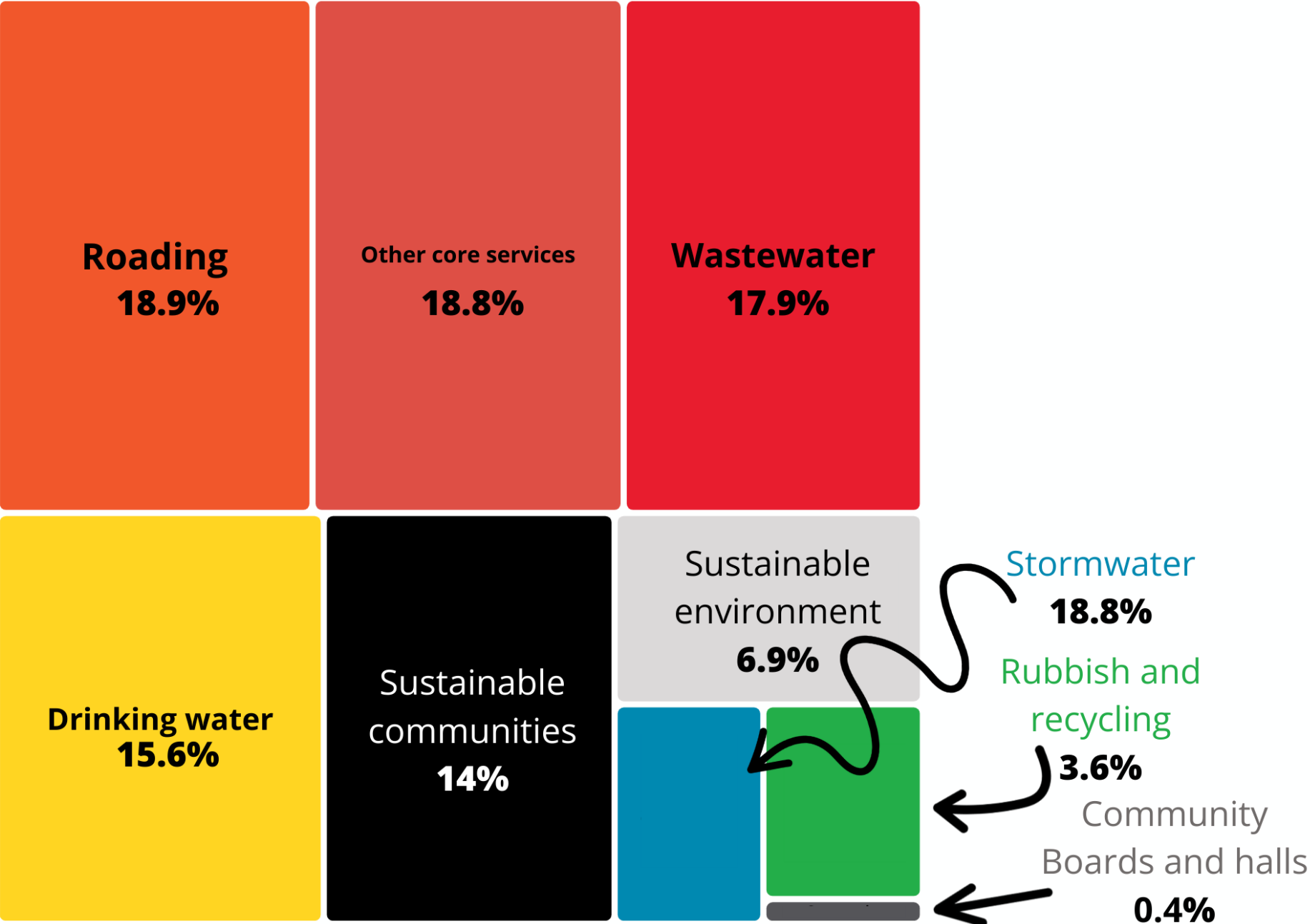
- Central government reforms.
- Expected population increase (42.1% by 2054).
- Economies of Scale - many small communities, 27,000 ratepaying properties.
- Over \$3 billion in assets.
- Rising inflation and interest costs.
- Debt & Waters Investment (but still AA+).
- The funding model.



# Comparative statistics

Districts	Waipā	Matamata-Piako	Hamilton	Western Bay of Plenty	Waikato	Auckland
Population	62,700	37,700	192,000	60,800	92,500	1,730,000
Rateable Units (ratepayers)	25,100	16,719	65,500	24,428	33,197	629,178
Land area (km2)	1,470	1,750	110	1,950	4,188	5,000
Number of settlements	23	24	1	14	36	3
Kms of roading	1,125	1,017	716	1,100	2,519	7,300
Water / wastewater treatment plants	8	14	2	15	16	36

# How rates are spent



# Average Urban Property - Pookeno

Residential - Pookeno	24/25	25/26	Change
<b>Property Valuation \$950,000</b>			
General Rate (CV)	2,008	2,094	85
General Rate - UAGC	526	548	22
Water	965	1,107	142
Wastewater	1,567	1,786	219
Stormwater	275	317	42
Refuse & Recycling	256	280	24
Community Facility	23	23	-
Fixed Targeted Rates	3,085	3,513	427
Total	5,620	6,155	535
Total % Increase			10%
Total \$ Increase			535
Per week	108	118	10

User pays charges are in addition: refuse stickers and water by meter

# Responding to the challenges

## Recent initiatives complete or in progress

- New Waters organisation with Hamilton City Council
- New Roading Contracts
- Digital Programme
- Customer service focus
- Main Street upgrade
- Pookeno Sportspark Masterplan
- Pookeno Community Hub



# Responding to the challenges

## Transformation Programme

- Core Services Review
- Operating Model Review & Structure Realignment
- Focus on efficiency



# Questions

Waikato District Council

**Thank you**