

Mangawara Bridge

UPDATE

DECEMBER 2018



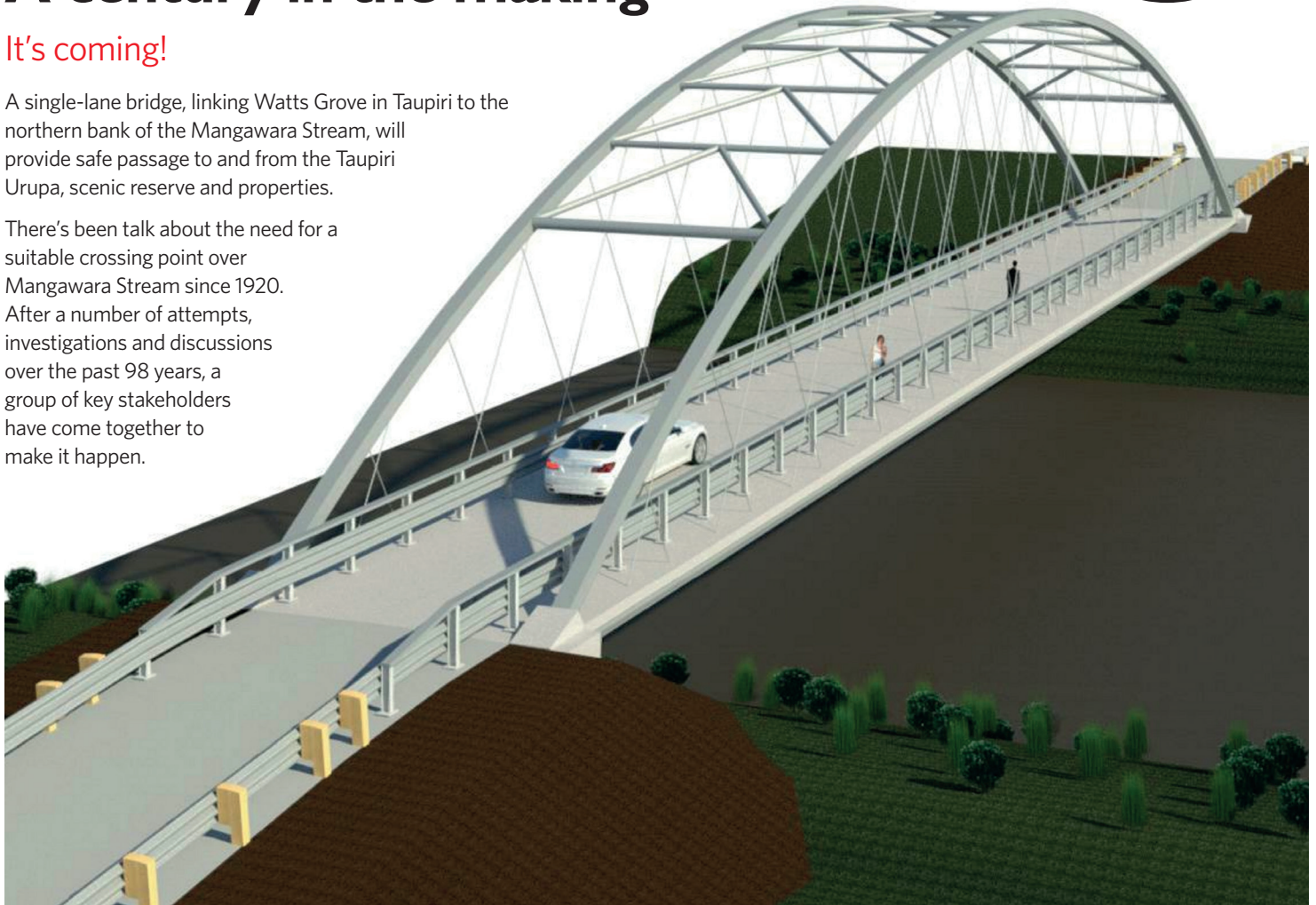
A century in the making

It's coming!

A single-lane bridge, linking Watts Grove in Taupiri to the northern bank of the Mangawara Stream, will provide safe passage to and from the Taupiri Urupa, scenic reserve and properties.

There's been talk about the need for a suitable crossing point over Mangawara Stream since 1920.

After a number of attempts, investigations and discussions over the past 98 years, a group of key stakeholders have come together to make it happen.



A concept drawing of what the new bridge will look like.

Why do we need this new bridge?

The existing pedestrian and vehicle access to this extremely important urupa site is unsafe.

They pose a risk for the Taupiri community and the wider population:

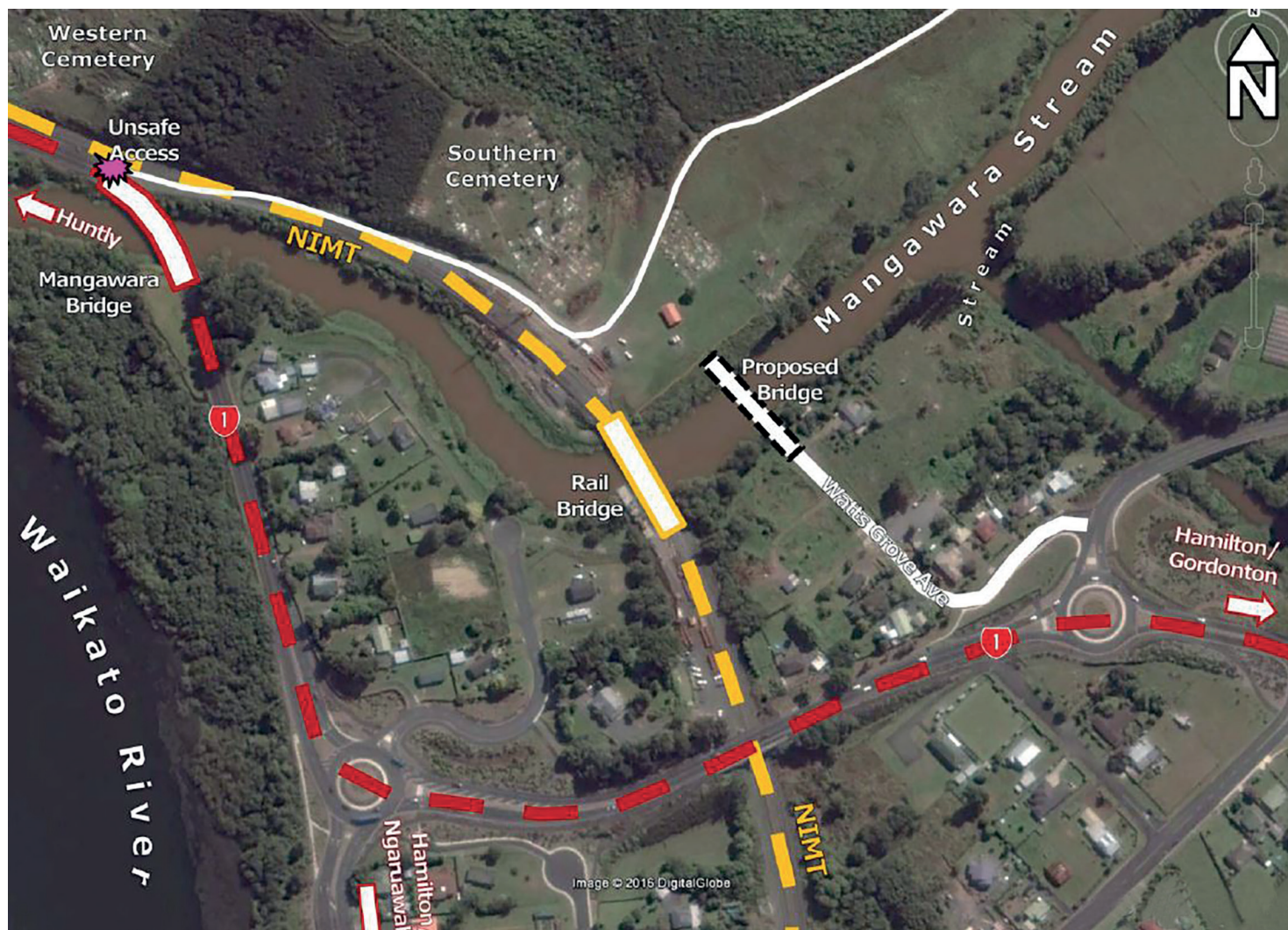
- The vehicle access off State Highway 1 is dangerous.
- There's a lack of suitable pedestrian access resulting in illegal use of the nearby KiwiRail bridge to get to the urupa and scenic reserve.
- The uncontrolled rail crossing near the access point to State Highway 1 has poor visibility and has been the site of recent incidents.

In addition, there are significant costs to rail operations when incidents occur.

Ko Taupiri te Maunga
Ko Waikato te Awa
Ko Pootatau te tangata
He piko he taniwha, he piko he taniwha
Waikato Taniwharau

Taupiri is the mountain
Waikato is the River
Pootatau is the Chief
At every bend a chief, at every bend a chief
Waikato of a hundred chiefs





A map showing where the new bridge will be built.

Who's involved

Waikato District Council, Waikato-Tainui, NZ Transport Agency, and KiwiRail are funding this project.

The bridge will be built by Emmetts Construction. The Taupiri Community Board has been active in the development of this project and Council continues to work closely with the wider Taupiri community.

Additional funding

Waikato District Council has also been successful in an application to the Waikato River Authority for the project.

This money will be used to carry out planting alongside the stream, carving pou and waharoa and improving access.

What happens next?

Our contractors are currently working on the detailed design of the bridge. This should be completed by early next year.

From there, the bridge itself will start being built off-site and earthworks on-site are scheduled to begin in about May 2019.

This is the first of our project updates for the Mangawara Bridge. We aim to issue them bi-monthly but we will send them out more frequently, if and when the need arises.

Stay informed

If you want to receive updates about the project, or if you want more information, please contact:
Project manager, Luke McCarthy luke.mccarthy@waikato.govt.nz